

HOW SWEET IT IS — MONTEREY



Builder: MONTEREY

Year Built: 2008

Model: Cruiser

Price: PRICE ON APPLICATION

Location: United States

LOA: 29' 0" (8.84m)

Beam: 10' 3" (3.12m)

Max Draft: 3' 0" (0.91m)

Our experienced yacht broker, Andrey Shestakov, will help you choose and buy a yacht that best suits your needs **How Sweet It Is — MONTEREY** from our catalogue. Presently, at Shestakov Yacht Sales Inc., we have a wide variety of yachts available on our sale's list. We also work in close contact with all the big yacht manufacturers from all over the world.

If you would like to buy a yacht **How Sweet It Is — MONTEREY** or would like help answering any questions concerning purchasing, selling or chartering a yacht, please call **+1(954)274-4435**

TABLE OF CONTENTS

TABLE OF CONTENTS	2
SPECIFICATIONS	4
Overview	4
Basic Information	4
Dimensions	4
Speed, Capacities and Weight	4
Accommodations	4
Hull and Deck Information	4
Engine Information	5
DETAILED INFORMATION	6
DESCRIPTION	6
Exclusions	8
Disclaimer	9
PHOTOS	10
Walk thru windshield	10
Arch	10
Cockpit	10
Cockpit seating	10
Cockpit seating 2	10
Entertainment area	10
Sink	11
Shore power connections	11
Helm seats	11
Helm Controls	11
Cabin	11
Galley	11
Dinette	12
Flat Screen TV	12

Breakers	12
Stereo equipment	12
Aft Cabin	12
Head	12
Engine Hatch	13
Batteries	13
Engine	13
Engines	13
Drives	13
On rack	13
CONTACTS	14
Contact details	14
Telephones	14
Office hours	14
Address	14

SPECIFICATIONS

Overview

Very Clean, low hour 290 Monterey. Powered with twin Volvo 5.0 OSI's, only 150 hrs.

Generator, AC, TV, microwave, radar arch, GPS Plotter, stereo, enclosure, etc., etc. Inside dry rack stored. See full specs!

Basic Information

Category: Cruiser

Sub Category: Sport Cruiser

Model Year: 2008

Year Built: 2008

Country: United States

Dimensions

LOA: 29' 0" (8.84m)

Beam: 10' 3" (3.12m)

Max Draft: 3' 0" (0.91m)

Speed, Capacities and Weight

Displacement: 10000 Pounds

Accommodations

Total Cabins: 1

Total Heads: 1

Hull and Deck Information

Hull Material: Fiberglass

Engine Information

Engines: 2

Manufacturer: Volvo Penta

Model: 5.0 OSI

Engine Type: Inboard

Fuel Type: Gas

DETAILED INFORMATION

DESCRIPTION

Very Clean, low hour 290 Monterey. Powered with twin Volvo 5.0 OSI's, only 150 hrs.

Generator, AC, TV, microwave, radar arch, GPS Plotter, stereo, enclosure, etc., etc. Inside dry rack stored. See full specs!

Deck and Hull

- Transom trunk
- 30 amp stereo power connection
- Integrated swim platform
- Folding swim ladder
- Pop-up stainless cleats
- Radar arch w/bimini
- Walk thru windshield
- Sunpad on bow
- Deck hatch
- One piece welded stainless bow rails
- Lewmar windless w/ foot controls
- Remote spotlight
- VHF Antenna
- Digital TV antenna
- Running lights
- Stainless handrails
- Full canvas enclosure

Cockpit

- Transom door to port
- Aft bench seating w/storage
- Aft facing seats
- Removable table w/drink holders
- Entertaining center to port
- Sink w/corion counter
- Storage cabinetry
- Cooler rack inside cabinets
- Double helm seats
- Cabin entry door
- Electric engine room hatch
- Transom hot/cold shower

Helm

- To starboard
- Tilt steering wheel
- Monterey gauges
- Raymarine Bi-data ST40
- Raymarine C80 Plotter
- Raymarine VHF
- Tritabs w/digital gauge
- Spotlight Remote
- Ritchie compass
- Fireboy Auto Suppression system
- Windshield wipers
- Kenwood stereo remote

Accommodations

- Entry way to port
- Galley to port
- Dinette forward (converts) w/teak table
- Settee to starboard
- Teak and holly Amtico flooring
- Carpet insert runners
- Aft sitting /berth w/privacy curtain
- Head w/shower to starboard
- Breaker panels to port
- Kenwood stereo w/CD, DVD, Sirius, CD changer
- JBL amplifier
- Cherry wood throughout
- Beige Ultra leather upholstery

Galley

- Cherrywood cabinetry
- Corian counters
- 2 burner stove
- Stainless sink
- Tappan microwave
- Isotherm refrigerator
- Overhead lighting

Forward Berth

- Wrap-around dinette seating
- Mirrored back wall
- Teak table
- Converts to berth

- Port lights
- Deck hatch
- Flat Screen TV 19" LG
- Reading lights
- Courtesy lights
- Marine Air AC controls

Aft Berth

- Comfortable sitting area
- Converts to full bed
- Privacy curtain
- Drop down flat screen TV
- Windows
- Reading lights
- Accent lights
- AC vents
- Hanging locker
-

Head

- Vacuflush toilet
- Stainless Sink
- Corian counters
- Mirrored vanity
- Medicine cabinet
- Port light

Mechanical

- Twin Volvo Penta 5.0 OSI
- 4 Batteries
- Kohler 5kw Generator w/3 hrs
- Guest 30 amp battery charger
- Raw water strainers
- JW waste system w/macerator
- 6 gallon hot water heaters
- Fireboy Auto Fire suppression system
- NeutraSalt flushing system
- Duo props

Exclusions

Owner's personal belongings.

Disclaimer

The Company offers the details of this vessel or yacht in good faith but cannot guarantee or warrant the accuracy of this information nor warrant the condition of the vessel. A buyer should instruct his representatives, agents, or his surveyors, to investigate such details as the buyer desires validated. This vessel or yacht is offered subject to prior sale, price change, or withdrawal without notice.

PHOTOS

Walk thru windshield



Arch



Cockpit



Cockpit seating



Cockpit seating 2



Entertainment area



Sink



Shore power connections



Helm seats



Helm Controls



Cabin



Galley



Dinette



Flat Screen TV



Breakers



Stereo equipment



Aft Cabin



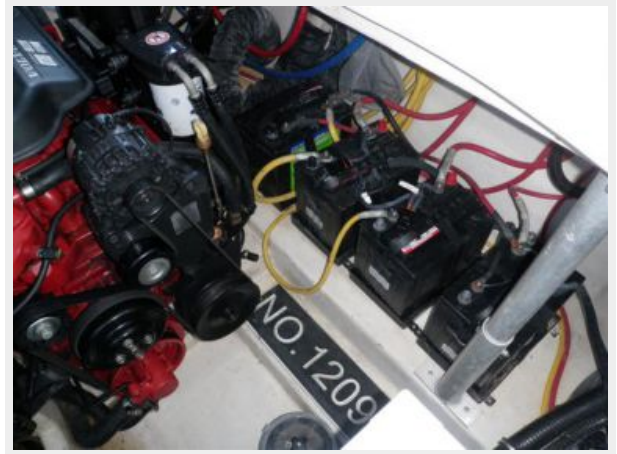
Head



Engine Hatch



Batteries



Engine



Engines



Drives



On rack



CONTACTS

Andrey Shestakov, leading yacht broker of the sales department of Shestakov Yacht Sales Inc. Shestakov Yacht Sales Inc., the official representative of the Miami/Fort Lauderdale FL headquarters.

Contact details

Email: andrey@shestakovyachtsales.com

Web: shestakovyachtsales.com/en/

Telephones

USA: +1(954)274-4435

Office hours

Monday – Saturday: **9:00 - 21:00** EDT

Sunday: **closed**

Address



Harbour Towne Marina, 850 NE 3rd St,
STE 213, Dania, FL 33004