

## ECLIPSE — FEADSHIP



**Builder:** FEADSHIP

**Year Built:** 1993

**Model:** Motor Yacht

**Price:** PRICE ON APPLICATION

**Location:** Monaco

**LOA:** 141' 1" (43.00m)

**Min Draft:** 9' 11" (3.00m)

**Cruise Speed:** 12 Kts. (14 MPH)

**Max Speed:** 14 Kts. (16 MPH)

Our experienced yacht broker, Andrey Shestakov, will help you choose and buy a yacht that best suits your needs **ECLIPSE — FEADSHIP** from our catalogue. Presently, at Shestakov Yacht Sales Inc., we have a wide variety of yachts available on our sale's list. We also work in close contact with all the big yacht manufacturers from all over the world.

If you would like to buy a yacht **ECLIPSE — FEADSHIP** or would like help answering any questions concerning purchasing, selling or chartering a yacht, please call **+1(954)274-4435**

---

# TABLE OF CONTENTS

---

TABLE OF CONTENTS	2
SPECIFICATIONS	3
Basic Information	3
Dimensions	3
Speed, Capacities and Weight	3
Accommodations	3
Hull and Deck Information	4
Engine Information	4
PHOTOS	5
CONTACTS	9
Contact details	9
Telephones	9
Office hours	9
Address	9

---

# SPECIFICATIONS

---

## Basic Information

---

**Category:** Motor Yacht

**Sub Category:** Displacement

**Model Year:** 1993

**Year Built:** 1993

**Refit Year:** 2008

**Country:** Monaco

## Dimensions

---

**LOA:** 141' 1" (43.00m)

**LWL:** 127' 4" (38.80m)

**Min Draft:** 9' 11" (3.00m)

## Speed, Capacities and Weight

---

**Cruise Speed:** 12 Kts. (14 MPH)

**Cruise Speed RPM:** 1330 Kts.

**Cruise Speed Range:** 3200

**Max Speed:** 14 Kts. (16 MPH)

**Max Speed RPM:** 1600 Kts.

**Max Speed Range:** 2400 Kts.

**Displacement:** 945783.10398 Pounds

**Gross Tonnage:** 438 Pounds

**Fuel Capacity:** 14998.3682523 Gallons

## Accommodations

---

**Total Cabins:** 6

**Sleeps:** 12

**Captain Cabin:** True

**Crew Sleeps:** 10

---

## Hull and Deck Information

---

**Hull Material:** Steel

**Exterior Designer:** T.Disdale

**Interior Designer:** T.Disdale

---

## Engine Information

---

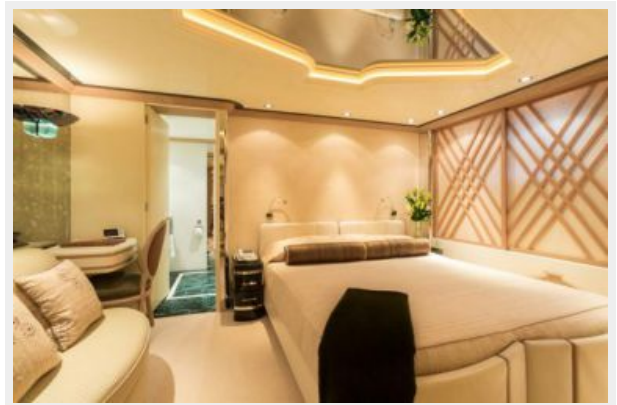
**Manufacturer:** Caterpillar

**Model:** 3508

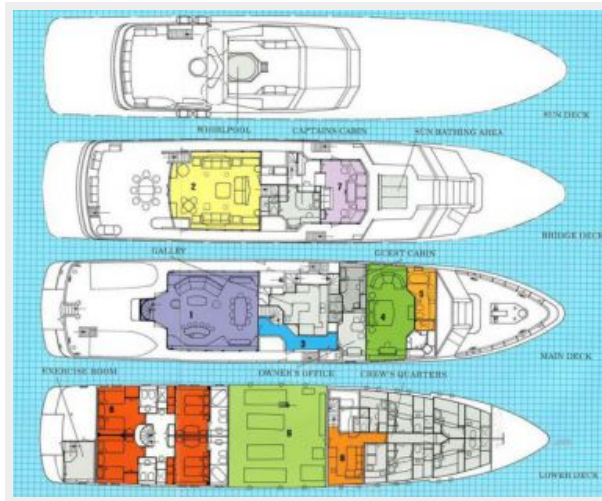
**Fuel Type:** Diesel

# PHOTOS











---

# CONTACTS

---

Andrey Shestakov, leading yacht broker of the sales department of Shestakov Yacht Sales Inc. Shestakov Yacht Sales Inc., the official representative of the Miami/Fort Lauderdale FL headquarters.

---

## Contact details

---

Email: [andrey@shestakovyachtsales.com](mailto:andrey@shestakovyachtsales.com)

Web: [shestakovyachtsales.com/en/](http://shestakovyachtsales.com/en/)

---

## Telephones

---

USA: +1(954)274-4435

---

## Office hours

---

Monday – Saturday: **9:00 - 21:00** EDT

Sunday: **closed**

---

## Address

---



Harbour Towne Marina, 850 NE 3rd St,  
STE 213, Dania, FL 33004