

GLISSE — NAUTOR'S SWAN



Судостроитель: NAUTOR'S SWAN

Год постройки: 2005

Модель: Cruising/Racing Sailboat

Цена: ЦЕНА ЯХТЫ ПО ЗАПРОСУ

Местонахождение: United States

Длина общая: 61' 10" (18.85m)

Ширина: 17' 6" (5.33m)

Мин. осадка: 9' 10" (3.00m)

Купить **GLISSE — NAUTOR'S SWAN** а также выбрать подходящую вам яхту из нашего каталога яхт вам поможет опытный яхтенный брокер Андрей Шестаков. На сегодняшний день компания **Shestakov Yacht Sales Inc.** имеет большое количество яхт в собственном списке продаж, а также тесно сотрудничает со всеми крупными яхтенными производителями по всему миру.

Для того чтобы купить яхту **GLISSE — NAUTOR'S SWAN** а также проконсультироваться по любому вопросу связанному с покупкой, продажей, чартером яхт позвоните по телефону **+7(918)465-66-44**.

ОГЛАВЛЕНИЕ

ОГЛАВЛЕНИЕ	2
ХАРАКТЕРИСТИКИ	4
Обзор	4
Основная информация	4
Размеры	4
Скорость, вместимость и масса	4
Размещение	4
Корпус и палуба	5
Информация о двигателе	5
ПОДРОБНОЕ ОПИСАНИЕ	6
Broker's Comments	6
Construction	6
Machinery	7
Electrical Systems	7
Plumbing Systems	8
Tankage	8
Navigation Equipment	9
Domestic Equipment	9
Accommodation	10
Deck Equipment	12
Исключения	14
Отказ от ответственности	14
ФОТОГРАФИИ	15
КОНТАКТЫ	20
Контактная информация	20
Телефоны	20
Время работы	20
Адрес	20

ХАРАКТЕРИСТИКИ

Обзор

Extremely practical modern-generation cruising Swan from German Frers. Twin wheels, easily-handled rig and a fantastic interior layout combine to offer effortless and powerful ocean cruising.

Offered to co-brokers on a commission split of 50/50.

Основная информация

Тип судна: Cruising/Racing Sailboat

Подкатегория: Крейсерская яхта

Модельный год: 2005

Год постройки: 2005

Страна: United States

Размеры

Длина общая: 61' 10" (18.85m)

Длина по ватерлинии: 52' 1" (15.87m)

Ширина: 17' 6" (5.33m)

Мин. осадка: 9' 10" (3.00m)

Скорость, вместимость и масса

Водоизмещение: 62831.74467 Pounds

Вместимость воды: 58.11785144 Gallons

Объем топливного бака: 69.741421728
Gallons

Размещение

Всего кают: 4

Всего коек: 6

Всего ком. состава: 3

Корпус и палуба

Материал корпуса: GRP

Материал палубы: GRP

Дизайнер корпуса: German Frers

Информация о двигателе

Двигатели: 1

Производитель: Cummins

Модель: 4BT3.9M

Тип двигателя: Inboard

Тип топлива: Diesel

ПОДРОБНОЕ ОПИСАНИЕ

Broker's Comments

Having had a Swan 53, this particular owner was very specific about the layout and accommodations she would need on her next Swan. GLISSE is perfect, with spacious owner cabin aft, two guest cabins, each with en-suite, and then space for two crew forward, also with en-suite.

As a home designer and builder, the owner has paid specific attention to the details of GLISSE, with high end soft furnishings, maintaining the teak interior, and everything in proper storage and in 'it's place'.

The double cockpit allows guests to be comfortable under a huge bimini, with the crew handling the logistics from the aft cockpit. Originally in the EU, GLISSE has been sailed and/or shipped back and forth to the Caribbean numerous times, with the owner living aboard her for the winter seasons and sharing her yacht with friends.

Construction

Hull, Deck & Superstructure Construction:

- White gelcoat hull, fully waxed and buffed October 2014.
- Hull is of single skin construction using glass/aramind hybrid fibre reinforced polyester laminate, with high proportion of fibres unidirectional, giving a stiff laminate with excellent strength and fatigue properties. Structural bulkheads of marine grade plywood laminated to hull and deck with foam strips between.
- Deck is of sandwich construction, using glass/aramind hybrid fibre reinforced polyester laminate with low density closed cell foam core and glued to hull.
- Bottom paint, Oct 2014.
- Hydraulically operated bathing platform in transom.
- Teak toerail.
- Original teak decks were 12mm, sanded and trimmed Sept 2014.

Keel & Rudder:

- Bulb keel is a lead casting with antimony, cast in keel bolts of high tensile stainless steel.
- Foam filler GRP rudder with tubular tapered stock of e-glass composite.
- Composite spade rudder with self-aligning roller bearing.
- New Rudder bearing Oct 2014.

Machinery

Engine & Gearboxes:

- Cummins, 4BT3.9M-HX, repainted Oct 2014.
- Wet exhaust system with fiberglass silencer, discharge through transom.

Maintenance & Performance:

- New engine intake pump, 2014.
- Range under power, 750 nm, or 100 hours at 7.3 knots, top speed 9.0 knots.

Propulsion & Steering:

- Engine control panel in cockpit rebuilt.
- Morse engine controls.
- RH 3 blade feathering prop, 23", serviced.
- New cutlass bearing, Oct 2014.
- Double SST wheels, elkhide covered.
- 41" dual sst wheels.

Electrical Systems

Voltage Systems:

- 24V DC interior wiring.

Generator:

- Westerbeke generator with sound shield and sep start battery, approx. 5250 hours Oct 2014.

Shore Power:

- Shore power cord, 230V. · 115v inlet.

Plumbing Systems

Fresh Water & Water Heating System:

- Sea water pump at galley sink with foot pump.
- Consumable water heated either with engine cooling water or with a heating element working on AC.
- Hot water tank capacity 15.8 gallons (60 litre).

Watermaker:

- Spectra watermaker.

Bilge Pumps:

- Manual bilge pump in cockpit.

Tankage

Fuel:

- Fuel 264 gallons (1000 litre), in two tanks of welded stainless steel.

Fresh water:

- Water 220 gallons (840 litre) in four tanks.

Grey/Blackwater holding tanks:

- Holding tank for aft head.

Navigation Equipment

- Nav Pod Grand Prix at each helm.
- Raymarine Smart Pilot, port side helm.
- Raymarine E90W stbd helm.
- Ray 55 VHF at chart table.
- Ray control panel for helm & nav station, connects to laptop.
- Ray ST 70 at chart table.
- Coby Monitor.
- Radar pole on deck, carbon fibre, with quick disconnect.

Domestic Equipment

Galley:

- New stove Oct 2014, gimbaled with fiddles.
- Double sst sinks.
- Garbage container.
- Front loading refrigerator, 8.5 cu ft.
- Front loading vegetable locker, 8.5 cu. ft.
- Top loading freezer, 5.3 cu. ft.
- Wet rack over galley sink.

Heads/Showers:

- Deck shower, hot and cold.

Heating & Ventilation:

- MarineAir air conditioning, (47,000 BTU), units rebuilt, in salon, aft cabin, guest cabins and forecabin, reverse cycle, separate controls.
- Hella turbo fans in cabins.

Accommodation

Summary of Accommodation:

- Hand rubbed satin finish teak interior with honey color, in excellent condition.
- Custom soft furnishings and bedding.
- Corian galley countertops, and head vanity tops.
- Overhead hatches serviced 2014.
- Non opening ports, new lexan.
- Watertight collision bulkhead in forepeak.

*Description of layout:**Crew Cabin:*

- Two bunks, port and stbd.
- Linen storage below bunks.
- Side lockers over bunks.
- 2 x hanging lockers next to port bunk.
- Independent access to deck.
- Access to interior via stbd side guest cabin head.
- En suite head with sink, manual toilet and shower fwd.

Forward Guest Cabin Port Side:

- One double bunk.
- Pullman folding top bunk.
- Hanging locker, drawers and storage lockers.
- En suite head with hand held shower, sink and vacuum toilet.

Forward Guest Cabin Starboard:

- One single bunk.
- Top bunk is folding Pullman.
- Hanging lockers, drawers and storage lockers.
- En suite head with shower, sink, and vacuum toilet (passage through to foc'cle).

Galley:

- Drawers and lockers for dishes and cutlery.
- Bilges steam cleaned Oct 2014.

Main Salon:

- Dining table with settee and chair to port side main salon.
- Cupboards and shelves in table base.
- Large settee stbd side.
- Drinks locker fwd.
- Lockers and bookshelves both sides.
- Customized storage under settees.

Aft Cabin:

- Double berth on CL.

- Hanging lockers, abundant drawers and shelving.
- Ensuite head with full stall shower, vacuum toilet and vanity.

Deck Equipment

Rig:

- IG- 84.32' or 25.70m.
- J - 23.62' or 7.20 m.
- P - 75.46' or 23.00 m.
- E - 23.79' or 7.25m.
- Triple Spreader Offshore Spars alum mast and boom, painted white, with mast steps.
- Navtec discontinuous rod rigging.
- Single lowers, runners, babystay, inner forestay.
- Navtec hydraulics for backstay, vang and outhaul.
- Reckmann RS 2000/40 furling.
- Adjustable spinnaker pole track on mast.
- Composite mast step.
- Stainless steel stemhead fitting with headsail tack attachment & double anchor rollers.
- Recessed lead blocks at mast for halyards, gennaker tack and reef lines.
- Jammers and blocks for spinnaker sheets.
- Additional jammer for jib halyard near mast.

Winches:

- 2 x Lewmar 77/3 SEST.
- 2 x Lewmar 64 CEST.
- 3 x Lewmar 64CST.
- 2 x Lewmar 40 CST.

- 2 x Lewmar 58 CST.
- 2 x Lewmar 54 CST.

Sails:

- 2008 North fully battened mainsail, crosscut 660 NorDac NSP, two reefs with Harken Battcar systems B-HL.
- 2008 Furling genoa 135%, crosscut 660 NorDacx NSP.
- These sails were put in to commission in 2008.

General:

- Teak covered removable swimming/boarding ladder.
- Pushpit with opening gate.
- Seats in pushpit corners.
- Pulpit with teak seat.
- Seawater deck wash (with fresh water connection)
- Bronze seacocks.
- Cockpit table.
- Gangway.

Anchoring & Mooring Equipment:

- Lewmar Ocean 3 Series windlass, rebuilt 2012, electric with gypsy only, recessed below deck, 10 mm chain.
- CQR Anchor.
- Spare anchor.

Covers, Canvas & Cushions:

- Mainsail cover.
- Bimini.
- Dodger.
- Cockpit cushions.
- Sun/darkening/mosquito over large overhead hatches.

Tender & Outboard:

- New dinghy, Sept 2014, hard bottom, fits to padeyes on foredeck.

Safety Equipment:

- Liferaft.
- Flares.
- MOM 8A.
- Lifesling 2.
- Outboard bracket & hoist on stern.
- Emergency tiller.

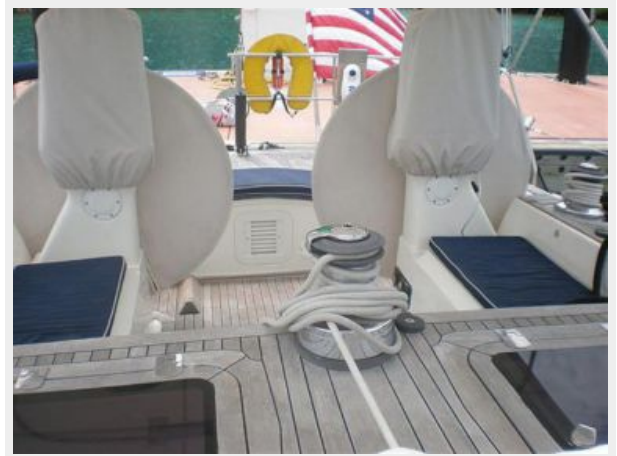
Исключения

При продаже яхты исключаются личные вещи владельца.

Отказ от ответственности

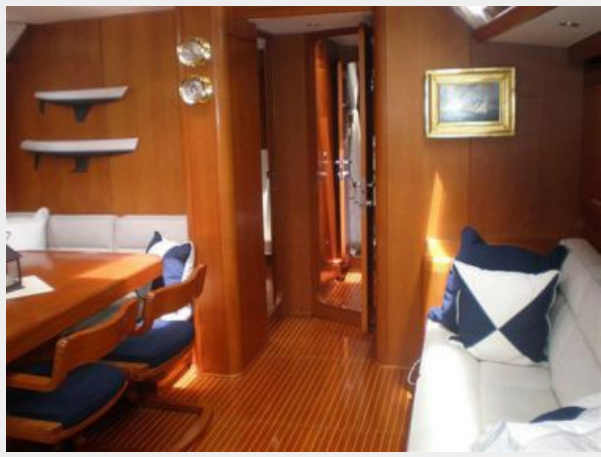
Компания предоставляет описание судна или яхты добросовестно, но не может гарантировать точность этой информации, а также не ручается за техническое состояние. Покупатель должен проинструктировать своих агентов или оценщиков исследовать представленную информацию более подробно, по собственному желанию. Продажа судна или яхты, изменение цены или снятие с продажи будет происходить без предварительного уведомления.

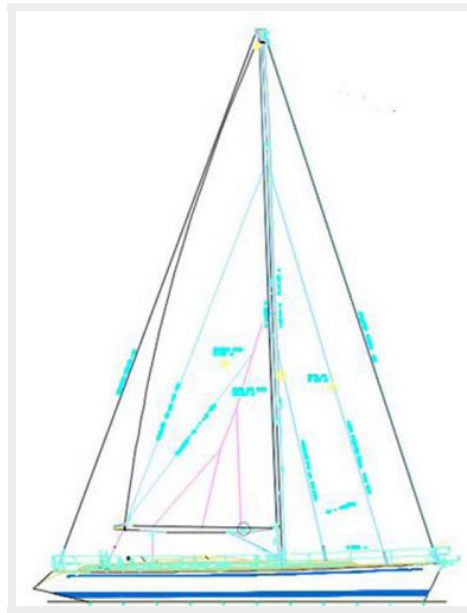
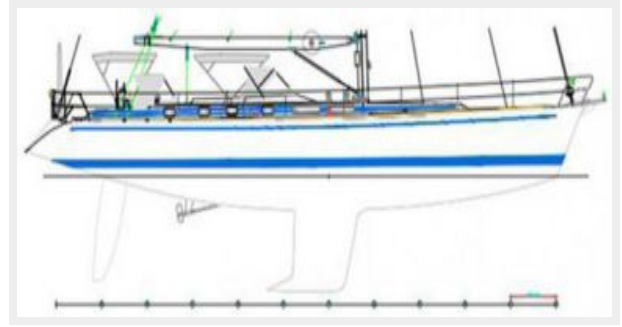
ФОТОГРАФИИ











КОНТАКТЫ

Андрей Шестаков (Andrey Shestakov) – ведущий яхтенный брокер отдела продаж яхт и судов компании Shestakov Yacht Sales Inc. Официальный представитель Shestakov Yacht Sales Inc. для русскоговорящих клиентов в центральном офисе компании в Майами/Форт Лодердейл/Флорида/США.

Контактная информация

Email: andrey@shestakovyachtsales.com

Web: shestakovyachtsales.com

Телефоны

Краснодарский край: **+7(918)465-66-44**

США, Майами, Флорида: **+1(954)274-4435**

Время работы

Понедельник – Суббота: **9:00 - 21:00**
EDT

Воскресенье: **Закрето**

Адрес



Harbour Towne Marina, 850 NE 3rd St,
STE 213, Dania, FL 33004