

LA DOLCE VITA — CHUNG HWA



Builder: CHUNG HWA

Year Built: 1988

Model: Trawler

Price: PRICE ON APPLICATION

Location: United States

LOA: 44' 0" (13.41m)

Beam: 13' 9" (4.19m)

Max Draft: 3' 7" (1.09m)

Cruise Speed: 18 Kts. (21 MPH)

Max Speed: 20 Kts. (23 MPH)

Our experienced yacht broker, Andrey Shestakov, will help you choose and buy a yacht that best suits your needs **La Dolce Vita — CHUNG HWA** from our catalogue. Presently, at Shestakov Yacht Sales Inc., we have a wide variety of yachts available on our sale's list. We also work in close contact with all the big yacht manufacturers from all over the world.

If you would like to buy a yacht **La Dolce Vita — CHUNG HWA** or would like help answering any questions concerning purchasing, selling or chartering a yacht, please call **+1(954)274-4435**

TABLE OF CONTENTS

TABLE OF CONTENTS	2
SPECIFICATIONS	4
Overview	4
Basic Information	5
Dimensions	5
Speed, Capacities and Weight	5
Accommodations	5
Hull and Deck Information	6
Engine Information	6
DETAILED INFORMATION	7
Overview	7
Vessel Walkthrough	8
Exclusions	11
Disclaimer	11
PHOTOS	12
2 anchors and windlass	12
updated Garmin and raymarine	14
Bar area aft deck	14
Salon looking forward	15
Salon facing aft	16
Custom drapes and blinds	16
Dinette Area seats 4	16
Galley area	17
full refrigerator	17
Master suite queen bed	17
Vanity and bench	17
large mirrors master	17
Stall shower	18

Master head	18
Forward Stateroom	18
washer/dryer	18
full wing doors	19
Guest head	19
Volvo Diesels	19
access to vacuflush system	19
brand new water making system	19
CONTACTS	20
Contact details	20
Telephones	20
Office hours	20
Address	20

SPECIFICATIONS

Overview

PRICE REDUCED APRIL 2015 \$10000 NEW ADDITIONAL UPGRADES JUST COMPLETED OCTOBER 2014

ALL NEW CANVAS AND EISENGLASS BOTH UP ON THE BRIDGE AND AFT SUNDECK

2 NEW AIR CONDITIONING SYSTEMS

BRAND NEW ABLATIVE BOTTOM PAINT

COMPLETE HULL BUFF AND WAXED

NEW BRIDGE GLASS FORWARD OF HELM

BOTH WING DOORS JUST REFINISHED

ALL NEW TOPSIDE PAINT IN DARK BLUE

You're invited to see this spacious, well decorated and up to date live aboard trawler. Her 44 feet shows as a much larger interior. La Dolce Vita has everything you need to live and cruise comfortably in safety and style. From the large picture windows allowing wonderful views and light to the completely redesigned interior where custom fabrics and top quality workmanship are evident. The salon also features newer carpet, central vacuum system, washer/dryer stacked and custom blinds and draperies. Also Love seats with storage. She has a designer plexiglass table and brand new 39" Television with blueray player. The Master Stateroom is aft with a walk-around custom Swedish queen mattress and an abundance of storage and mirrored walls. She has an amazing amount of drawers 24 in all. An ensuite head features a full shower with glass shower doors and the new Vacu-flush fresh water system insures quiet, dependable operation. She has a swing out vanity in the Master Stateroom. The galley is forward and two steps down from the salon but the "cook" is never out of site of the quests or separated from the party. Featuring a large, recently installed refrigerator/freezer, three burner stove with oven, microwave and large double stainless steel sinks the galley has everything you could wish for including a dishwasher! The dishwasher is currently not connected. On the starboard side there is a large dinette that comfortably seats four and can be converted into a double bed. Ample space is provided for storage of even large items. Forward, the guest stateroom features very generous bunk beds, a hanging closet and even a small vanity. An ensuite head with shower includes a Vacu-flush head. The aft deck is enclosed with teak wing doors and Strato-glass curtains, making it an excellent space in any weather. The lighted teak bar includes a new refrigerator and sink. With the adjustable height table and swivel chairs this is the perfect spot for an island

breakfast or a late night cocktail. A centered gate and stainless steel ladder lead from the aft deck to the cockpit. A transom door opens to the large fiberglass swim platform. The fly bridge is enclosed with Eisenglass side curtains. The navigation equipment is late model and all top of the line. Her low hour economical Volvo 305 HP diesels allow you to cruise all day at 8 mph and get on a plane and hit 20+ when you need to get there quickly. Vessel hauled and bottom painted Summer of 2014 with an anti fouling ablative paint. She is docked in the waters at Marina Jack in beautiful Sarasota .FL. This vessel can be seen by appointment only.

Basic Information

Category: Trawler	Model Year: 1988
Year Built: 1988	Country: United States
Fly Bridge: Yes	Cockpit: Yes

Dimensions

LOA: 44' 0" (13.41m)	Beam: 13' 9" (4.19m)
Max Draft: 3' 7" (1.09m)	Clearance: 18' 0" (5.49m)

Speed, Capacities and Weight

Cruise Speed: 18 Kts. (21 MPH)	Max Speed: 20 Kts. (23 MPH)
Water Capacity: 175 Gallons	Holding Tank: 40 Gallons
Fuel Capacity: 450 Gallons	

Accommodations

Total Cabins: 2	Total Berths: 3
Total Heads: 2	

Hull and Deck Information

Hull Material: Fiberglass

Engine Information

Engines: 2

Manufacturer: Volvo Penta

Model: TAMD 61A

Engine Type: Inboard

Fuel Type: Diesel

DETAILED INFORMATION

Overview

PRICE REDUCED APRIL 2015 \$10000 NEW ADDITIONAL UPGRADES JUST COMPLETED OCTOBER 2014

ALL NEW CANVAS AND EISENGLASS BOTH UP ON THE BRIDGE AND AFT SUNDECK

2 NEW AIR CONDITIONING SYSTEMS

BRAND NEW ABLATIVE BOTTOM PAINT

COMPLETE HULL BUFF AND WAXED

NEW BRIDGE GLASS FORWARD OF HELM

BOTH WING DOORS JUST REFINISHED

ALL NEW TOPSIDE PAINT IN DARK BLUE

You're invited to see this spacious, well decorated and up to date live aboard trawler. Her 44 feet shows as a much larger interior. La Dolce Vita has everything you need to live and cruise comfortably in safety and style. From the large picture windows allowing wonderful views and light to the completely redesigned interior where custom fabrics and top quality workmanship are evident. The salon also features newer carpet, central vacuum system, washer/dryer stacked and custom blinds and draperies. Also Love seats with storage. She has a designer plexiglass table and brand new 39" Television with blueray player. The Master Stateroom is aft with a walk-around custom Swedish queen mattress and an abundance of storage and mirrored walls. She has an amazing amount of drawers 24 in all. An ensuite head features a full shower with glass shower doors and the new Vacu-flush fresh water system insures quiet, dependable operation. She has a swing out vanity in the Master Stateroom. The galley is forward and two steps down from the salon but the "cook" is never out of site of the quests or separated from the party. Featuring a large, recently installed refrigerator/freezer, three burner stove with oven, microwave and large double stainless steel sinks the galley has everything you could wish for including a dishwasher! The dishwasher is currently not connected. On the starboard side there is a large dinette that comfortably seats four and can be converted into a double bed. Ample space is provided for storage of even large items. Forward, the guest stateroom features very generous bunk beds, a hanging closet and even a small vanity. An ensuite head with shower includes a Vacu-flush head. The aft deck is enclosed with teak wing doors and Strato-glass curtains, making it an excellent space in any weather. The lighted teak bar includes a new refrigerator and sink. With the adjustable height table and swivel chairs this is the perfect spot for an island

breakfast or a late night cocktail. A centered gate and stainless steel ladder lead from the aft deck to the cockpit. A transom door opens to the large fiberglass swim platform. The fly bridge is enclosed with Eisenglass side curtains. The navigation equipment is late model and all top of the line. Her low hour economical Volvo 305 HP diesels allow you to cruise all day at 8 mph and get on a plane and hit 20+ when you need to get there quickly. Vessel hauled and bottom painted Summer of 2014 with an anti fouling ablative paint. She is docked in the waters at Marina Jack in beautiful Sarasota .FL. This vessel can be seen by appointment only.

Vessel Walkthrough

Salon

The Salon features forward facing windows and large, sliding windows port and starboard for ample light and natural ventilation. Two facing custom built love seats, separated by an exquisite Plexiglas coffee table are to the port side with a swivel barrel chair and matching ottoman to starboard. The interior was completely redesigned in 2009 by a California Designer. Expensive fabrics were used throughout and the workmanship is top quality. There are storage compartments built into both love seats and the ottoman. New Venetian blinds and custom draperies.

Galley

Galley is forward and two steps down from the salon. Featuring a large, recently installed refrigerator/freezer, three burner stove with oven, microwave and large double stainless steel sinks the galley has everything you could wish for including a dishwasher! On the starboard side there is a large dinette that comfortably seats four and converts to a double bed. Ample space is provided for storage of even large items. A new 400 gallon per day watermaker installed in 2009. This high quality system from Watermakers in Ft. Lauderdale will provide all the freshwater you could ever use.

Accommodations

- The guest stateroom features very generous bunk beds, a hanging closet and even a small vanity. An ensuite head with shower includes a Vacu-flush system. An overhead hatch and two portholes provide light and ventilation.

- The Master Stateroom is comfortably aft with a full sized walk-around queen bed. The mattress is a new (2009) high quality foam design from Sweden. There is an abundance of storage, including three hanging lockers and twenty six (26) drawers in the master alone. An ensuite head features a full shower with glass shower doors. The new Vacu-flush fresh water system insures quiet, dependable operation and a total lack of the typical “head” odors. Opening windows on both sides and aft provide ample ventilation. A lighted vanity with swing out seat is provided for the Lady

Aft Deck

The aft deck is where you will spend the majority of the time. Teak wing doors and fully enclosed with Strato-glass curtains this is an excellent space in any weather. The lighted teak bar includes a refrigerator and sink. With the adjustable height table and four swivel chairs this is where the party will be! New aft deck refrigerator Dec 2013. A centered gate and stainless steel ladder lead from the aft deck to the cockpit. A transom door opens to the large fiberglass swim platform. The thirteen foot by five foot cockpit provides lots of space for fishing, swimming, loading the dingy or just hanging out! A custom stainless steel swim ladder with wide rungs for divers attaches to the swim step.

Fly Bridge / Electronics The navigation equipment is late model and all top of the line. The 24 mile color radar, autopilot and depth finder 2009 Garmin GPSMAP 4212 with a 12 inch screen and the excellent Garmin depthfinders (2). Glendinning engine synchronizers and Sea Star hydraulic steering provide the control you need.

Mechanical

- Three zone Marine Air reverse cycle heat and Air Conditioning both new last year
- Fireboy Halon 1301 automatic fire suppression system
- Glendinning engine synchronizer
- Bennett trim tabs
- Morse mechanical shift and throttle controls
- Racor fuel filters (three)
- Shaft coupling vibration dampers
- Sea Star hydraulic steering
- Three bilge pumps

- High bilge water alarm
- Whale manual emergency bilge pump
- Bilge/engine room blowers
- Full engine instrumentation in engine room
- Sight gauges on fuel tanks
- Westerbeke 8KW genset

Sanitary System New Vacuflush porcelain heads installed in Master and Guest heads in Feb 2009. New Vacuflush pump and tank installed under forward hatch for ease of maintenance Feb. 2009 All new Vacuflush premium odor shield hose installed Feb 2009. New macerator installed July 2009. This is an odor free, trouble free system that uses one pint of water per flush and greatly extends the usability of the holding tank. This system, installed, cost over \$7,000.00

Electrical

- Generator: Westerbeke 8kw in sound shield
- Hours: 1900
- Inverter: StatPower, 2kw, remote inverter switch
- Battery Charger: Professional Mariner 50 amp, automatic
- Batteries: 3 new ones last year one on isolation switch
- Switch: Battery Parallel switch
- Shore Power: Two 30 amp 5 power cords
- Power input: Dual, port and strbd center of boat
- Electronics and Navigation
- GPS: Garmin GPSMAP 4212 - new 2009
- Radar: Raymarine SL-70C 24 mile color
- Autopilot Raymarine Raypilot RP650
- Depth finders: Raymarine L365 & Standard Horizon
- Hailer: Standard 5100012 hailer
- Radio: Uniden Polaris VHF
- Compass: Danforth Constellation
- Intercom: PhoneCon ships intercom
- Spotlight: Guest remote control

On Deck

- Bridge clearance is 18 ft
- 35 lb Stainless Steel Anchor
- 100 foot of 3/8 BB galvanized chain (new 2009)
- 200 foot of heavy anchor line
- Sea Wolf chain Windless with rope capstan
- Fenders (6), Fender Holders and lines
- Cockpit ladder switches port & strbd
- Bow Pulpit and Rails all 1 1/4" polished Stainless steel
- Dual flip-up teak and SS boarding ladders, port & strbd.
- Large swim Platform
- Transom door to swim platform
- Custom built wide stainless steel dive/swim ladder
- Deck box in cockpit
- 2012 New Isen glass installed in the flybridge curtains and the sundeck curtains

Exclusions

Owner's personal belongings.

Disclaimer

The Company offers the details of this vessel or yacht in good faith but cannot guarantee or warrant the accuracy of this information nor warrant the condition of the vessel. A buyer should instruct his representatives, agents, or his surveyors, to investigate such details as the buyer desires validated. This vessel or yacht is offered subject to prior sale, price change, or withdrawal without notice.

PHOTOS



2 anchors and windlass



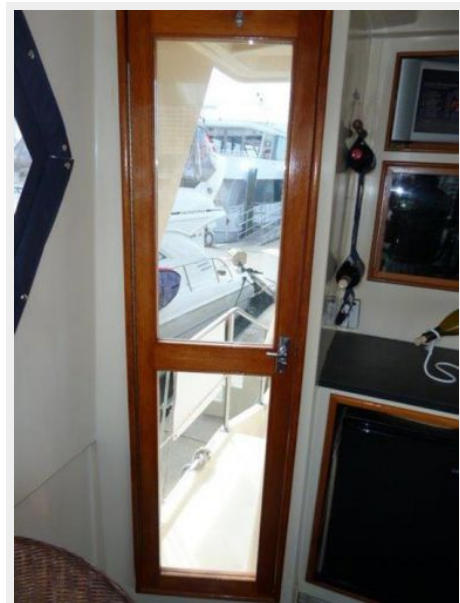




updated Garmin and raymarine



Bar area aft deck



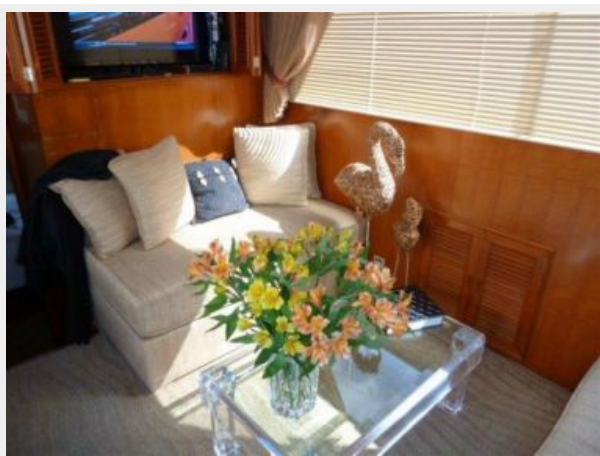


Salon looking forward





Salon facing aft



Custom drapes and blinds



Dinette Area seats 4

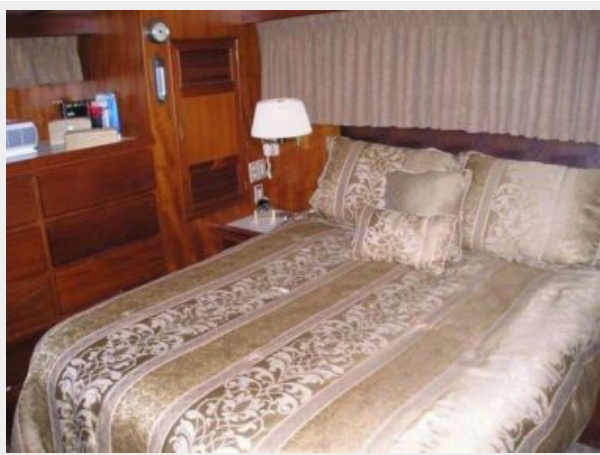
Galley area



full refrigerator



Master suite queen bed



Vanity and bench



large mirrors master



Master head



Stall shower



washer/dryer



Forward Stateroom



Guest head



full wing doors



Volvo Diesels



access to vacuflush system



brand new water making system



CONTACTS

Andrey Shestakov, leading yacht broker of the sales department of Shestakov Yacht Sales Inc. Shestakov Yacht Sales Inc., the official representative of the Miami/Fort Lauderdale FL headquarters.

Contact details

Email: andrey@shestakovyachtsales.com

Web: shestakovyachtsales.com/en/

Telephones

USA: +1(954)274-4435

Office hours

Monday – Saturday: **9:00 - 21:00** EDT

Sunday: **closed**

Address



Harbour Towne Marina, 850 NE 3rd St,
STE 213, Dania, FL 33004