

LA DOLCE VITA — CHUNG HWA



Судостроитель: CHUNG HWA

Год постройки: 1988

Модель: Траулер

Цена: **ЦЕНА ЯХТЫ ПО ЗАПРОСУ**

Местонахождение: United States

Длина общая: 44' 0" (13.41m)

Ширина: 13' 9" (4.19m)

Макс. осадка: 3' 7" (1.09m)

Крейс. скорость: 18 Kts. (21 MPH)

Макс. скорость: 20 Kts. (23 MPH)

Купить La Dolce Vita — CHUNG HWA а также выбрать подходящую вам яхту из нашего каталога яхт вам поможет опытный яхтенный брокер Андрей Шестаков. На сегодняшний день компания Shestakov Yacht Sales Inc. имеет большое количество яхт в собственном списке продаж, а также тесно сотрудничает со всеми крупными яхтенными производителями по всему миру.

Для того чтобы купить яхту La Dolce Vita — CHUNG HWA а также проконсультироваться по любому вопросу связанному с покупкой, продажей, чартером яхт позвоните по телефону **+7(918)465-66-44**.

ОГЛАВЛЕНИЕ

ОГЛАВЛЕНИЕ	2
ХАРАКТЕРИСТИКИ	4
Обзор	4
Основная информация	5
Размеры	5
Скорость, вместимость и масса	5
Размещение	5
Корпус и палуба	6
Информация о двигателе	6
ПОДРОБНОЕ ОПИСАНИЕ	7
Overview	7
Vessel Walkthrough	8
Исключения	11
Отказ от ответственности	11
ФОТОГРАФИИ	12
2 anchors and windlass	12
updated Garmin and raymarine	14
Bar area aft deck	14
Salon looking forward	15
Salon facing aft	16
Custom drapes and blinds	16
Dinette Area seats 4	16
Galley area	17
full refrigerator	17
Master suite queen bed	17
Vanity and bench	17
large mirrors master	17
Stall shower	18

Master head	18
Forward Stateroom	18
washer/dryer	18
full wing doors	19
Guest head	19
Volvo Diesels	19
access to vacuflush system	19
brand new water making system	19
КОНТАКТЫ	20
Контактная информация	20
Телефоны	20
Время работы	20
Адрес	20

ХАРАКТЕРИСТИКИ

Обзор

PRICE REDUCED APRIL 2015 \$10000 NEW ADDITIONAL UPGRADES JUST COMPLETED OCTOBER 2014

ALL NEW CANVAS AND EISENGLASS BOTH UP ON THE BRIDGE AND AFT SUNDECK

2 NEW AIR CONDITIONING SYSTEMS

BRAND NEW ABLATIVE BOTTOM PAINT

COMPLETE HULL BUFF AND WAXED

NEW BRIDGE GLASS FORWARD OF HELM

BOTH WING DOORS JUST REFINISHED

ALL NEW TOPSIDE PAINT IN DARK BLUE

You're invited to see this spacious, well decorated and up to date live aboard trawler. Her 44 feet shows as a much larger interior. La Dolce Vita has everything you need to live and cruise comfortably in safety and style. From the large picture windows allowing wonderful views and light to the completely redesigned interior where custom fabrics and top quality workmanship are evident. The salon also features newer carpet, central vacuum system, washer/dryer stacked and custom blinds and draperies. Also Love seats with storage. She has a designer plexiglass table and brand new 39" Television with blueray player. The Master Stateroom is aft with a walk-around custom Swedish queen mattress and an abundance of storage and mirrored walls. She has an amazing amount of drawers 24 in all. An ensuite head features a full shower with glass shower doors and the new Vacu-flush fresh water system insures quiet, dependable operation. She has a swing out vanity in the Master Stateroom. The galley is forward and two steps down from the salon but the "cook" is never out of site of the quests or separated from the party. Featuring a large, recently installed refrigerator/freezer, three burner stove with oven, microwave and large double stainless steel sinks the galley has everything you could wish for including a dishwasher! The dishwasher is currently not connected. On the starboard side there is a large dinette that comfortably seats four and can be converted into a double bed. Ample space is provided for storage of even large items. Forward, the guest stateroom features very generous bunk beds, a hanging closet and even a small vanity. An ensuite head with shower includes a Vacu-flush head. The aft deck is enclosed with teak wing doors and Strato-glass curtains, making it an excellent space in any weather. The lighted teak bar includes a new refrigerator and sink. With the adjustable height table and swivel chairs this is the perfect spot for an island

breakfast or a late night cocktail. A centered gate and stainless steel ladder lead from the aft deck to the cockpit. A transom door opens to the large fiberglass swim platform. The fly bridge is enclosed with Eisenglass side curtains. The navigation equipment is late model and all top of the line. Her low hour economical Volvo 305 HP diesels allow you to cruise all day at 8 mph and get on a plane and hit 20+ when you need to get there quickly. Vessel hauled and bottom painted Summer of 2014 with an anti fouling ablative paint. She is docked in the waters at Marina Jack in beautiful Sarasota .FL. This vessel can be seen by appointment only.

Основная информация

Тип судна: Траулер	Модельный год: 1988
Год постройки: 1988	Страна: United States
Открытая палуба мостика: Да	Кубрик: Да

Размеры

Длина общая: 44' 0" (13.41m)	Ширина: 13' 9" (4.19m)
Макс. осадка: 3' 7" (1.09m)	Трапы: 18' 0" (5.49m)

Скорость, вместимость и масса

Крейс. скорость: 18 Kts. (21 MPH)	Макс. скорость: 20 Kts. (23 MPH)
Вместимость воды: 175 Gallons	Вместимость сточного бака: 40 Gallons
Объем топливного бака: 450 Gallons	

Размещение

Всего кают: 2	Всего коек: 3
Всего ком. состава: 2	

Корпус и палуба

Материал корпуса: Fiberglass

Информация о двигателе

Двигатели: 2

Производитель: Volvo Penta

Модель: TAMD 61A

Тип двигателя: Inboard

Тип топлива: Diesel

ПОДРОБНОЕ ОПИСАНИЕ

Overview

PRICE REDUCED APRIL 2015 \$10000 NEW ADDITIONAL UPGRADES JUST COMPLETED OCTOBER 2014

ALL NEW CANVAS AND EISENGLASS BOTH UP ON THE BRIDGE AND AFT SUNDECK

2 NEW AIR CONDITIONING SYSTEMS

BRAND NEW ABLATIVE BOTTOM PAINT

COMPLETE HULL BUFF AND WAXED

NEW BRIDGE GLASS FORWARD OF HELM

BOTH WING DOORS JUST REFINISHED

ALL NEW TOPSIDE PAINT IN DARK BLUE

You're invited to see this spacious, well decorated and up to date live aboard trawler. Her 44 feet shows as a much larger interior. La Dolce Vita has everything you need to live and cruise comfortably in safety and style. From the large picture windows allowing wonderful views and light to the completely redesigned interior where custom fabrics and top quality workmanship are evident. The salon also features newer carpet, central vacuum system, washer/dryer stacked and custom blinds and draperies. Also Love seats with storage. She has a designer plexiglass table and brand new 39" Television with blueray player. The Master Stateroom is aft with a walk-around custom Swedish queen mattress and an abundance of storage and mirrored walls. She has an amazing amount of drawers 24 in all. An ensuite head features a full shower with glass shower doors and the new Vacu-flush fresh water system insures quiet, dependable operation. She has a swing out vanity in the Master Stateroom. The galley is forward and two steps down from the salon but the "cook" is never out of site of the quests or separated from the party. Featuring a large, recently installed refrigerator/freezer, three burner stove with oven, microwave and large double stainless steel sinks the galley has everything you could wish for including a dishwasher! The dishwasher is currently not connected. On the starboard side there is a large dinette that comfortably seats four and can be converted into a double bed. Ample space is provided for storage of even large items. Forward, the guest stateroom features very generous bunk beds, a hanging closet and even a small vanity. An ensuite head with shower includes a Vacu-flush head. The aft deck is enclosed with teak wing doors and Strato-glass curtains, making it an excellent space in any weather. The lighted teak bar includes a new refrigerator and sink. With the adjustable height table and swivel chairs this is the perfect spot for an island

breakfast or a late night cocktail. A centered gate and stainless steel ladder lead from the aft deck to the cockpit. A transom door opens to the large fiberglass swim platform. The fly bridge is enclosed with Eisenglass side curtains. The navigation equipment is late model and all top of the line. Her low hour economical Volvo 305 HP diesels allow you to cruise all day at 8 mph and get on a plane and hit 20+ when you need to get there quickly. Vessel hauled and bottom painted Summer of 2014 with an anti fouling ablative paint. She is docked in the waters at Marina Jack in beautiful Sarasota .FL. This vessel can be seen by appointment only.

Vessel Walkthrough

Salon

The Salon features forward facing windows and large, sliding windows port and starboard for ample light and natural ventilation. Two facing custom built love seats, separated by an exquisite Plexiglas coffee table are to the port side with a swivel barrel chair and matching ottoman to starboard. The interior was completely redesigned in 2009 by a California Designer. Expensive fabrics were used throughout and the workmanship is top quality. There are storage compartments built into both love seats and the ottoman. New Venetian blinds and custom draperies.

Galley

Galley is forward and two steps down from the salon. Featuring a large, recently installed refrigerator/freezer, three burner stove with oven, microwave and large double stainless steel sinks the galley has everything you could wish for including a dishwasher! On the starboard side there is a large dinette that comfortably seats four and converts to a double bed. Ample space is provided for storage of even large items. A new 400 gallon per day watermaker installed in 2009. This high quality system from Watermakers in Ft. Lauderdale will provide all the freshwater you could ever use.

Accommodations

- The guest stateroom features very generous bunk beds, a hanging closet and even a small vanity. An ensuite head with shower includes a Vacu-flush system. An overhead hatch and two portholes provide light and ventilation.

- The Master Stateroom is comfortably aft with a full sized walk-around queen bed. The mattress is a new (2009) high quality foam design from Sweden. There is an abundance of storage, including three hanging lockers and twenty six (26) drawers in the master alone. An ensuite head features a full shower with glass shower doors. The new Vacu-flush fresh water system insures quiet, dependable operation and a total lack of the typical “head” odors. Opening windows on both sides and aft provide ample ventilation. A lighted vanity with swing out seat is provided for the Lady

Aft Deck

The aft deck is where you will spend the majority of the time. Teak wing doors and fully enclosed with Strato-glass curtains this is an excellent space in any weather. The lighted teak bar includes a refrigerator and sink. With the adjustable height table and four swivel chairs this is where the party will be! New aft deck refrigerator Dec 2013. A centered gate and stainless steel ladder lead from the aft deck to the cockpit. A transom door opens to the large fiberglass swim platform. The thirteen foot by five foot cockpit provides lots of space for fishing, swimming, loading the dingy or just hanging out! A custom stainless steel swim ladder with wide rungs for divers attaches to the swim step.

Fly Bridge / Electronics The navigation equipment is late model and all top of the line. The 24 mile color radar, autopilot and depth finder 2009 Garmin GPSMAP 4212 with a 12 inch screen and the excellent Garmin depthfinders (2). Glendinning engine synchronizers and Sea Star hydraulic steering provide the control you need.

Mechanical

- Three zone Marine Air reverse cycle heat and Air Conditioning both new last year
- Fireboy Halon 1301 automatic fire suppression system
- Glendinning engine synchronizer
- Bennett trim tabs
- Morse mechanical shift and throttle controls
- Racor fuel filters (three)
- Shaft coupling vibration dampers
- Sea Star hydraulic steering
- Three bilge pumps

- High bilge water alarm
- Whale manual emergency bilge pump
- Bilge/engine room blowers
- Full engine instrumentation in engine room
- Sight gauges on fuel tanks
- Westerbeke 8KW genset

Sanitary System New Vacuflush porcelain heads installed in Master and Guest heads in Feb 2009. New Vacuflush pump and tank installed under forward hatch for ease of maintenance Feb. 2009 All new Vacuflush premium odor shield hose installed Feb 2009. New macerator installed July 2009. This is an odor free, trouble free system that uses one pint of water per flush and greatly extends the usability of the holding tank. This system, installed, cost over \$7,000.00

Electrical

- Generator: Westerbeke 8kw in sound shield
- Hours: 1900
- Inverter: StatPower, 2kw, remote inverter switch
- Battery Charger: Professional Mariner 50 amp, automatic
- Batteries: 3 new ones last year one on isolation switch
- Switch: Battery Parallel switch
- Shore Power: Two 30 amp 5 power cords
- Power input: Dual, port and strbd center of boat
- Electronics and Navigation
- GPS: Garmin GPSMAP 4212 - new 2009
- Radar: Raymarine SL-70C 24 mile color
- Autopilot Raymarine Raypilot RP650
- Depth finders: Raymarine L365 & Standard Horizon
- Hailer: Standard 5100012 hailer
- Radio: Uniden Polaris VHF
- Compass: Danforth Constellation
- Intercom: PhoneCon ships intercom
- Spotlight: Guest remote control

On Deck

- Bridge clearance is 18 ft
- 35 lb Stainless Steel Anchor
- 100 foot of 3/8 BB galvanized chain (new 2009)
- 200 foot of heavy anchor line
- Sea Wolf chain Windless with rope capstan
- Fenders (6), Fender Holders and lines
- Cockpit ladder switches port & strbd
- Bow Pulpit and Rails all 1 1/4" polished Stainless steel
- Dual flip-up teak and SS boarding ladders, port & strbd.
- Large swim Platform
- Transom door to swim platform
- Custom built wide stainless steel dive/swim ladder
- Deck box in cockpit
- 2012 New Isen glass installed in the flybridge curtains and the sundeck curtains

Исключения

При продаже яхты исключаются личные вещи владельца.

Отказ от ответственности

Компания предоставляет описание судна или яхты добросовестно, но не может гарантировать точность этой информации, а также не ручается за техническое состояние. Покупатель должен проинструктировать своих агентов или оценщиков исследовать представленную информацию более подробно, по собственному желанию. Продажа судна или яхты, изменение цены или снятие с продажи будет происходить без предварительного уведомления.

ФОТОГРАФИИ



2 anchors and windlass



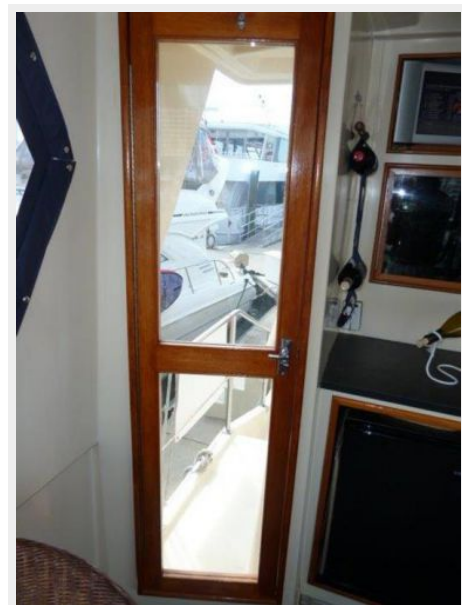




updated Garmin and raymarine



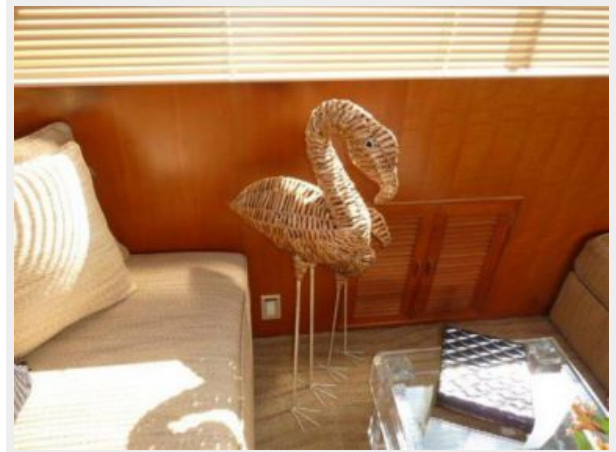
Bar area aft deck





Salon looking forward





Salon facing aft



Custom drapes and blinds



Dinette Area seats 4

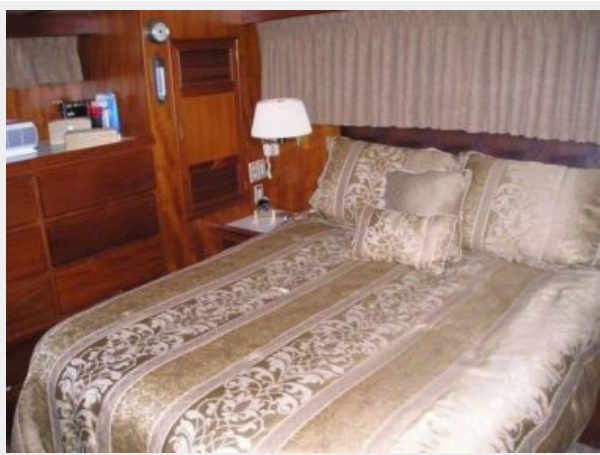
Galley area



full refrigerator



Master suite queen bed



Vanity and bench



large mirrors master



Master head



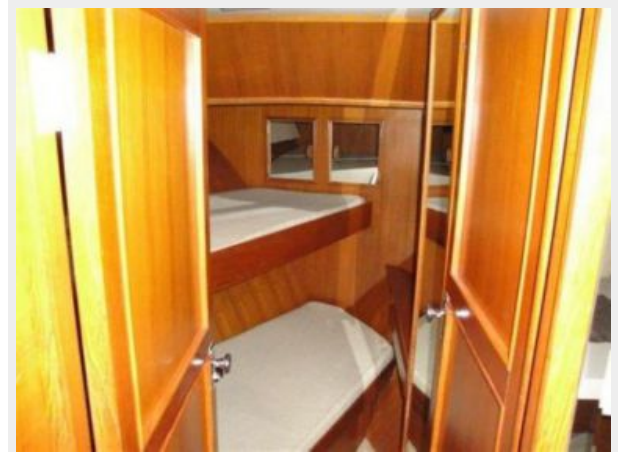
Stall shower



washer/dryer



Forward Stateroom



Guest head



full wing doors



Volvo Diesels



access to vacuflush system



brand new water making system



КОНТАКТЫ

Андрей Шестаков (Andrey Shestakov) – ведущий яхтенный брокер отдела продаж яхт и судов компании Shestakov Yacht Sales Inc. Официальный представитель Shestakov Yacht Sales Inc. для русскоговорящих клиентов в центральном офисе компании в Майами/Форт Лодердейл/Флорида/США.

Контактная информация

Email: andrey@shestakovyachtsales.com

Web: shestakovyachtsales.com

Телефоны

Краснодарский край: **+7(918)465-66-44**

США, Майами, Флорида: **+1(954)274-4435**

Время работы

Понедельник – Суббота: **9:00 - 21:00**
EDT

Воскресенье: **Закрито**

Адрес



Harbour Towne Marina, 850 NE 3rd St,
STE 213, Dania, FL 33004