

NO NAME — BRUCE ROBERTS



Builder: BRUCE ROBERTS

LOA: 43' 0" (13.11m)

Year Built: 1983

Beam: 12' 0" (3.66m)

Model: Cruising Sailboat

Max Draft: 5' 10" (1.78m)

Price: PRICE ON APPLICATION

Location: United States

Our experienced yacht broker, Andrey Shestakov, will help you choose and buy a yacht that best suits your needs **NO NAME — BRUCE ROBERTS** from our catalogue. Presently, at Shestakov Yacht Sales Inc., we have a wide variety of yachts available on our sale's list. We also work in close contact with all the big yacht manufacturers from all over the world.

If you would like to buy a yacht **NO NAME — BRUCE ROBERTS** or would like help answering any questions concerning purchasing, selling or chartering a yacht, please call **+1(954)274-4435**

TABLE OF CONTENTS

TABLE OF CONTENTS	2
SPECIFICATIONS	3
Overview	3
Basic Information	5
Dimensions	5
Speed, Capacities and Weight	5
Accommodations	5
Hull and Deck Information	5
Engine Information	5
PHOTOS	6
CONTACTS	13
Contact details	13
Telephones	13
Office hours	13
Address	13

SPECIFICATIONS

Overview

This Bruce Roberts designed 43' fiberglass ketch is now available for new owners. As a blue water ketch of classic design and a center cockpit. Hull construction is of heavy fiberglass by VHV Marine, Durban SA. Interior millwork and joiner was completed by independent marine carpenters. This BR 43 features traditional sailboat systems that are proven over time. A must see if you need an affordable blue water cruiser. **Specs** Builder: VHV Marine, Surban SA Designer: Bruce Roberts-Goodson Keel: Full Hull Shape: Monohull **Dimensions** LOA: 43 ft 0 in Beam: 12 ft 0 in Maximum Draft: 5 ft 10 in **Engines** Engine 1: Engine Brand: BMW Year Built: 1983 Engine Model: D50 Engine/Fuel Type: Diesel Propeller: 2 blade propeller Drive Type: Direct Drive Engine Power: 42 HP **Tanks** Fresh Water Tanks: 1 (211 Gallons) Fuel Tanks: 1 (185 Gallons) Holding Tanks: 1 (15 Gallons) **Accommodations** Number of single berths: 2 Number of double berths: 1 Number of cabins: 3 Number of heads: 1 **Electronics** Navigation center Depthsounder VHF TV set Wind speed and direction Compass Plotter GPS **Sails** Genoa Battered mainsail Storm jib Spinnaker **Rigging** Spinnaker pole Steering wheel **Inside Equipment** Battery charger Refrigerator Oven Marine head Microwave oven Deep freezer Air conditioning - Through hatch units Hot water Electric bilge pump **Electrical Equipment** Shore power inlet Inverter Electrical Circuit: 12V **Outside Equipment/Extras** Cockpit table Cockpit cushions Outboard engine brackets Teak sidedecks Teak cockpit Swimming ladder Electric windlass **Covers** Spray hood - Rigid Mainsail cover

Vessel Walk Through

Upon stepping on deck you will notice the deep and well protected center cockpit with a hard dodger.

Descending the ladder into the main salon, the u shaped settee with dinning table is on port with a second settee to starboard. Note lots of built in storage and the quality of the fit and finish millwork. There is a small refrigeration locker built into the settee seat.

Moving forward, the forward head is on port with a large sail lock to starboard of the companionway. Further forward are twin berths.

Returning to the main salon, the galley is to the port side of the entry ladder. On the starboard side of the ladder is another built in storage area with one refrigeration locker and a large freezer locker adjoining the companionway aft.

Further down the companionway aft on starboard is the chart table with seat and electrical breaker panel. Opposite the chart table on center line is the engine compartment with great access.

The aft cabin features a large settee, lots of storage lockers, a hanging locker and a double berth. The aft cabin head has had the plumbing fixtures removed and is being used as a storage locker.

Electrical

Shore power is 220V with 12v fixtures throughout the BR43. An inverter provides 110v as needed. There are five house batteries installed new between 2011 and 2013. Mastervolt charging system plus 150 amp alternator, engine driven.

Electronics

Navman sailing instruments in cockpit and a LMS 527 chart plotter. Hand held Megellan Nav 5000 and a Uniden hand help VHF.

Mechanical

Auxiliary power is a BMW D50 diesel engine 42hp fresh water cooled . No engine hour meter. There are two through hatch A/C units 110hp. Hot & cold fresh water pressurized system.

Two blade fixed propeller.

Steering is cable with an emergency tiller.

Sails & Rigging

Ketch rigged, Elvstrom aluminum masts, booms and spreaders, stainless steel standing rigging and a spinnaker pole. Sails include 2 mains, four genoas, two mizzen, one spinnaker, mizzen staysail, staysail and storm jib. Winches : Total 11, Gibb & Lemar, two primary, two secondary, five main mast and two mizzen mast winches. Sails are serviceable but condition should be confirmed.

Deck & Hull

The hull and deck are fiberglass with teak decks over the fiberglass. Teak decks appear to be in good condition. Simpson Lawrence electric windlass on the bow and two CQR anchors with chain and rode.

Full long keel protection for the prop and rudder.

Misc. Other Equipment

Life preservers, flares, fire extinguishers, harnesses, flags

Basic Information

Category: Cruising Sailboat

Sub Category: Cruising Ketch

Model Year: 1983

Year Built: 1983

Country: United States

Dimensions

LOA: 43' 0" (13.11m)

Beam: 12' 0" (3.66m)

Max Draft: 5' 10" (1.78m)

Speed, Capacities and Weight

Water Capacity: 211 Gallons

Holding Tank: 15 Gallons

Fuel Capacity: 185 Gallons

Accommodations

Total Cabins: 3

Hull and Deck Information

Hull Material: Fiberglass

Engine Information

Engines: 1

Manufacturer: BMW

Model: D50

Engine Type: Inboard

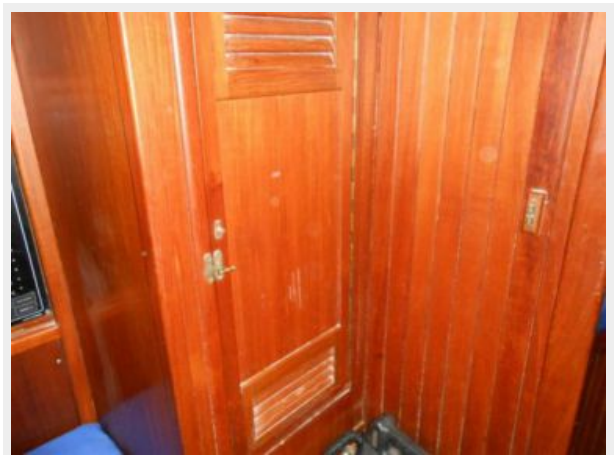
Fuel Type: Diesel

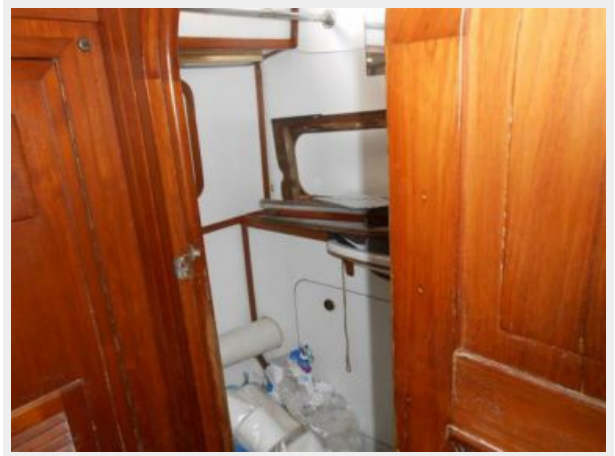
PHOTOS

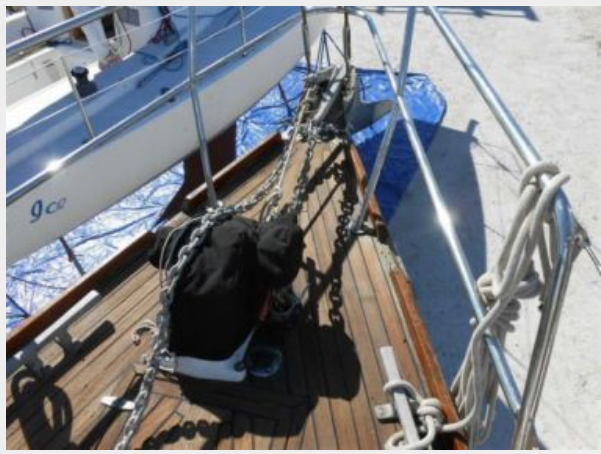














CONTACTS

Andrey Shestakov, leading yacht broker of the sales department of Shestakov Yacht Sales Inc. Shestakov Yacht Sales Inc., the official representative of the Miami/Fort Lauderdale FL headquarters.

Contact details

Email: andrey@shestakovyachtsales.com

Web: shestakovyachtsales.com/en/

Telephones

USA: +1(954)274-4435

Office hours

Monday – Saturday: **9:00 - 21:00** EDT

Sunday: **closed**

Address



Harbour Towne Marina, 850 NE 3rd St,
STE 213, Dania, FL 33004