

NO NAME — BRUCE ROBERTS



Судостроитель: BRUCE ROBERTS

Год постройки: 1983

Модель: Крейсерская яхта

Цена: **ЦЕНА ЯХТЫ ПО ЗАПРОСУ**

Местонахождение: United States

Длина общая: 43' 0" (13.11m)

Ширина: 12' 0" (3.66m)

Макс. осадка: 5' 10" (1.78m)

Купить **NO NAME — BRUCE ROBERTS** а также выбрать подходящую вам яхту из нашего каталога яхт вам поможет опытный яхтенный брокер Андрей Шестаков. На сегодняшний день компания **Shestakov Yacht Sales Inc.** имеет большое количество яхт в собственном списке продаж, а также тесно сотрудничает со всеми крупными яхтенными производителями по всему миру.

Для того чтобы купить яхту **NO NAME — BRUCE ROBERTS** а также проконсультироваться по любому вопросу связанному с покупкой, продажей, чартером яхт позвоните по телефону **+7(918)465-66-44**.

ОГЛАВЛЕНИЕ

ОГЛАВЛЕНИЕ	2
ХАРАКТЕРИСТИКИ	3
Обзор	3
Основная информация	5
Размеры	5
Скорость, вместимость и масса	5
Размещение	5
Корпус и палуба	5
Информация о двигателе	5
ФОТОГРАФИИ	6
КОНТАКТЫ	13
Контактная информация	13
Телефоны	13
Время работы	13
Адрес	13

ХАРАКТЕРИСТИКИ

Обзор

This Bruce Roberts designed 43' fiberglass ketch is now available for new owners. As a blue water ketch of classic design and a center cockpit. Hull construction is of heavy fiberglass by VHV Marine, Durban SA. Interior millwork and joiner was completed by independent marine carpenters. This BR 43 features traditional sailboat systems that are proven over time. A must see if you need an affordable blue water cruiser. **Specs** Builder: VHV Marine, Surban SA Designer: Bruce Roberts-Goodson Keel: Full Hull Shape: Monohull **Dimensions** LOA: 43 ft 0 in Beam: 12 ft 0 in Maximum Draft: 5 ft 10 in **Engines** Engine 1: Engine Brand: BMW Year Built: 1983 Engine Model: D50 Engine/Fuel Type: Diesel Propeller: 2 blade propeller Drive Type: Direct Drive Engine Power: 42 HP **Tanks** Fresh Water Tanks: 1 (211 Gallons) Fuel Tanks: 1 (185 Gallons) Holding Tanks: 1 (15 Gallons) **Accommodations** Number of single berths: 2 Number of double berths: 1 Number of cabins: 3 Number of heads: 1 **Electronics** Navigation center Depthsounder VHF TV set Wind speed and direction Compass Plotter GPS **Sails** Genoa Battered mainsail Storm jib Spinnaker **Rigging** Spinnaker pole Steering wheel **Inside Equipment** Battery charger Refrigerator Oven Marine head Microwave oven Deep freezer Air conditioning - Through hatch units Hot water Electric bilge pump **Electrical Equipment** Shore power inlet Inverter Electrical Circuit: 12V **Outside Equipment/Extras** Cockpit table Cockpit cushions Outboard engine brackets Teak sidedecks Teak cockpit Swimming ladder Electric windlass **Covers** Spray hood - Rigid Mainsail cover

Vessel Walk Through

Upon stepping on deck you will notice the deep and well protected center cockpit with a hard dodger.

Descending the ladder into the main salon, the u shaped settee with dinning table is on port with a second settee to starboard. Note lots of built in storage and the quality of the fit and finish millwork. There is a small refrigeration locker built into the settee seat.

Moving forward, the forward head is on port with a large sail lock to starboard of the companionway. Further forward are twin berths.

Returning to the main salon, the galley is to the port side of the entry ladder. On the starboard side of the ladder is another built in storage area with one refrigeration locker and a large freezer locker adjoining the companionway aft.

Further down the companionway aft on starboard is the chart table with seat and electrical breaker panel. Opposite the chart table on center line is the engine compartment with great access.

The aft cabin features a large settee, lots of storage lockers, a hanging locker and a double berth. The aft cabin head has had the plumbing fixtures removed and is being used as a storage locker.

Electrical

Shore power is 220V with 12v fixtures throughout the BR43. An inverter provides 110v as needed. There are five house batteries installed new between 2011 and 2013. Mastervolt charging system plus 150 amp alternator, engine driven.

Electronics

Navman sailing instruments in cockpit and a LMS 527 chart plotter. Hand held Megellan Nav 5000 and a Uniden hand help VHF.

Mechanical

Auxiliary power is a BMW D50 diesel engine 42hp fresh water cooled . No engine hour meter. There are two through hatch A/C units 110hp. Hot & cold fresh water pressurized system.

Two blade fixed propeller.

Steering is cable with an emergency tiller.

Sails & Rigging

Ketch rigged, Elvstrom aluminum masts, booms and spreaders, stainless steel standing rigging and a spinnaker pole. Sails include 2 mains, four genoas, two mizzen, one spinnaker, mizzen staysail, staysail and storm jib. Winches : Total 11, Gibb & Lemar, two primary, two secondary, five main mast and two mizzen mast winches. Sails are serviceable but condition should be confirmed.

Deck & Hull

The hull and deck are fiberglass with teak decks over the fiberglass. Teak decks appear to be in good condition. Simpson Lawrence electric windlass on the bow and two CQR anchors with chain and rode.

Full long keel protection for the prop and rudder.

Misc. Other Equipment

Life preservers, flares, fire extinguishers, harnesses, flags

Основная информация

Тип судна: Крейсерская яхта

Подкатегория: Крейсерский кеч

Модельный год: 1983

Год постройки: 1983

Страна: United States

Размеры

Длина общая: 43' 0" (13.11m)

Ширина: 12' 0" (3.66m)

Макс. осадка: 5' 10" (1.78m)

Скорость, вместимость и масса

Вместимость воды: 211 Gallons

Вместимость сточного бака: 15 Gallons

Объем топливного бака: 185 Gallons

Размещение

Всего кают: 3

Корпус и палуба

Материал корпуса: Fiberglass

Информация о двигателе

Двигатели: 1

Производитель: BMW

Модель: D50

Тип двигателя: Inboard

Тип топлива: Diesel

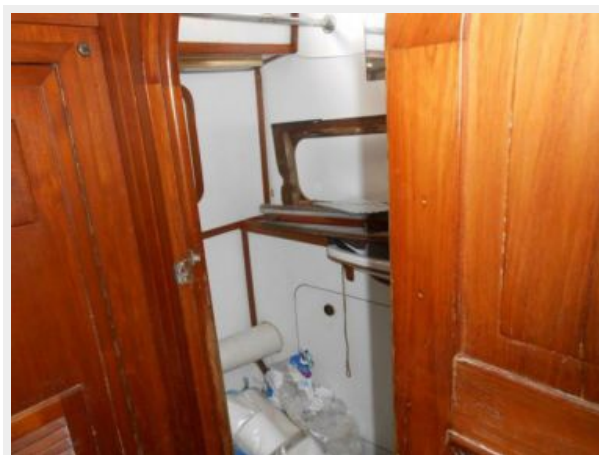
ФОТОГРАФИИ

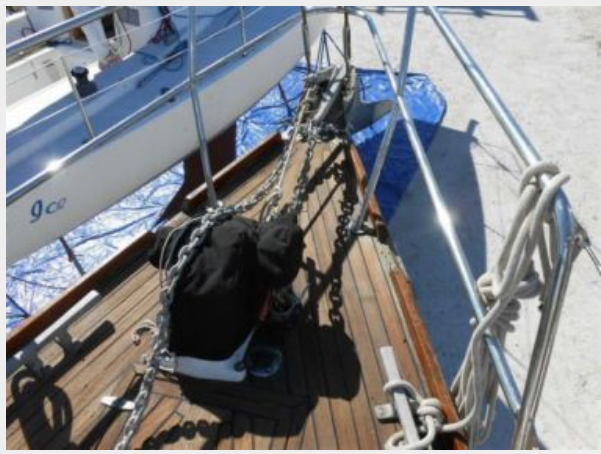














КОНТАКТЫ

Андрей Шестаков (Andrey Shestakov) – ведущий яхтенный брокер отдела продаж яхт и судов компании Shestakov Yacht Sales Inc. Официальный представитель Shestakov Yacht Sales Inc. для русскоговорящих клиентов в центральном офисе компании в Майами/Форт Лодердейл/Флорида/США.

Контактная информация

Email: andrey@shestakovyachtsales.com

Web: shestakovyachtsales.com

Телефоны

Краснодарский край: **+7(918)465-66-44**

США, Майами, Флорида: **+1(954)274-4435**

Время работы

Понедельник – Суббота: **9:00 - 21:00**
EDT

Воскресенье: **Закрыто**

Адрес



Harbour Towne Marina, 850 NE 3rd St,
STE 213, Dania, FL 33004