

1997 ALBIN 28 TE — ALBIN



Builder: [ALBIN](#)

Year Built: 1997

Model: Cruiser

Price: PRICE ON APPLICATION

Location: United States

LOA: 28' 11" (8.81m)

Beam: 10' 0" (3.05m)

Max Draft: 3' 2" (0.97m)

Our experienced yacht broker, Andrey Shestakov, will help you choose and buy a yacht that best suits your needs 1997 Albin 28 TE — ALBIN from our catalogue. Presently, at Shestakov Yacht Sales Inc., we have a wide variety of yachts available on our sale's list. We also work in close contact with all the big yacht manufacturers from all over the world.

If you would like to buy a yacht 1997 Albin 28 TE — ALBIN or would like help answering any questions concerning purchasing, selling or chartering a yacht, please call +1(954)274-4435

TABLE OF CONTENTS

TABLE OF CONTENTS	2
SPECIFICATIONS	4
Basic Information	4
Dimensions	4
Speed, Capacities and Weight	4
Accommodations	4
Hull and Deck Information	4
Engine Information	5
PHOTOS	6
from ahead	6
port profile	6
swim platform and transom door	6
bow detail	6
port cockpit	7
looking forward in cockpit	7
toward helm	7
helm detail	7
looking aft	7
Peninsular turbo diesel (GM 6.5L)	7
starboard head	8
U seating and dinette forward	8
galley	8
double berth to port aft	8
panel detail	8
inverter	8
Vetus bow thruster	9
HVAC	9
Clarion sound	9

ICOM VHF	9
on the hard	9
on the lift	9
interior layout	10
CONTACTS	11
Contact details	11
Telephones	11
Office hours	11
Address	11

SPECIFICATIONS

Basic Information

Category: Cruiser

Sub Category: Downeast

Model Year: 1997

Year Built: 1997

Country: United States

Dimensions

LOA: 28' 11" (8.81m)

LWL: 24' 0" (7.32m)

Beam: 10' 0" (3.05m)

Max Draft: 3' 2" (0.97m)

MFG Length: 28' 4" (8.64m)

Speed, Capacities and Weight

Displacement: 7500 Pounds

Water Capacity: 36 Gallons

Fuel Capacity: 132 Gallons

Accommodations

Total Berths: 5

Total Heads: 1

Hull and Deck Information

Hull Material: Fiberglass

Engine Information

Engines: 1

Manufacturer: Peninsula

Model: 6.5L

Engine Type: Inboard

Fuel Type: Diesel

PHOTOS

port profile



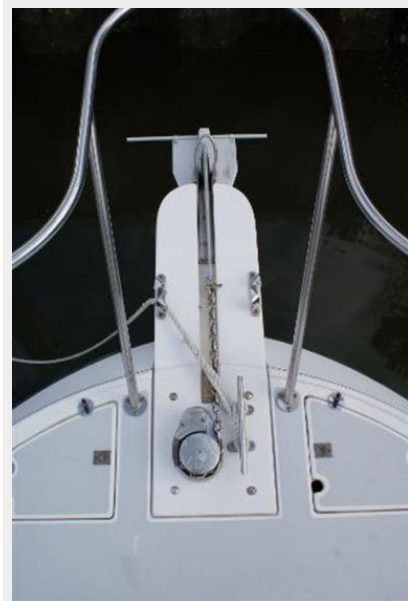
from ahead



swim platform and transom door



bow detail



port cockpit



looking forward in cockpit



toward helm



helm detail



looking aft



Peninsular turbo diesel (GM 6.5L)



U seating and dinette forward



starboard head



galley



double berth to port aft



panel detail



inverter



Vetus bow thruster



HVAC



Clarion sound



ICOM VHF



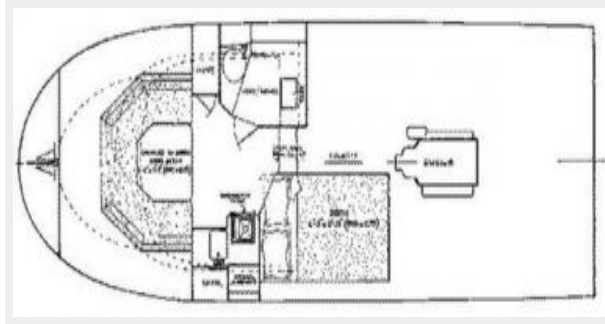
on the hard



on the lift



interior layout



CONTACTS

Andrey Shestakov, leading yacht broker of the sales department of Shestakov Yacht Sales Inc. Shestakov Yacht Sales Inc., the official representative of the Miami/Fort Lauderdale FL headquarters.

Contact details

Email: andrey@shestakovyachtsales.com

Web: shestakovyachtsales.com/en/

Telephones

USA: +1(954)274-4435

Office hours

Monday – Saturday: **9:00 - 21:00** EDT

Sunday: **closed**

Address



Harbour Towne Marina, 850 NE 3rd St,
STE 213, Dania, FL 33004