

NO NAME — CUSTOM LINE



Builder: CUSTOM LINE

Year Built: 2014

Model: Motor Yacht

Price: PRICE ON APPLICATION

Location: Peru

LOA: 85' 4" (26.01m)

Beam: 22' 9" (6.93m)

Max Draft: 7' 4" (2.24m)

Cruise Speed: 10 Kts. (12 MPH)

Max Speed: 14 Kts. (16 MPH)

Our experienced yacht broker, Andrey Shestakov, will help you choose and buy a yacht that best suits your needs **NO NAME — CUSTOM LINE** from our catalogue. Presently, at Shestakov Yacht Sales Inc., we have a wide variety of yachts available on our sale's list. We also work in close contact with all the big yacht manufacturers from all over the world.

If you would like to buy a yacht **NO NAME — CUSTOM LINE** or would like help answering any questions concerning purchasing, selling or chartering a yacht, please call **+1(954)274-4435**

TABLE OF CONTENTS

TABLE OF CONTENTS	2
SPECIFICATIONS	3
Basic Information	3
Dimensions	3
Speed, Capacities and Weight	3
Accommodations	3
Hull and Deck Information	3
Engine Information	4
DETAILED INFORMATION	5
FACTORY INSTALLED UPGRADES	5
Exclusions	8
Disclaimer	8
PHOTOS	9
CONTACTS	31
Contact details	31
Telephones	31
Office hours	31
Address	31

SPECIFICATIONS

Basic Information

Category: Motor Yacht

Model Year: 2014

Year Built: 2014

Country: Peru

Dimensions

LOA: 85' 4" (26.01m)

LWL: 70' 10" (21.59m)

Beam: 22' 9" (6.93m)

Max Draft: 7' 4" (2.24m)

Speed, Capacities and Weight

Cruise Speed: 10 Kts. (12 MPH)

Max Speed: 14 Kts. (16 MPH)

Water Capacity: 528 Gallons

Fuel Capacity: 3276 Gallons

Accommodations

Total Cabins: 5

Sleeps: 12

Total Heads: 6

Crew Cabin: 2

Crew Berths: 2

Hull and Deck Information

Hull Material: Fiberglass

Engine Information

Engines: 2

Manufacturer: MAN

Model: V10 1100 CR

Engine Type: Inboard

Fuel Type: Diesel

DETAILED INFORMATION

FACTORY INSTALLED UPGRADES

RINA Pleasure Yacht, Class Notation: **C X HULL; MACH; Y; Unrestricted Navigation**

ARG 4X 4000

Davit with gross loading 800 kg -diff.600kg TEAK COVER ON UPPER DECK FORW.AREA

Watermaker Idromar 260l/h diff.from 130 l/h duplex

Stern thruster hydraulic 40 HP

Control station in the cockpit fixed with cover

(2) Generator Köhler 28 kw diff from 20 kw auxiliary

Air conditioning tropical (saloon + cabins + 2 crew)

Dimmer light lower deck

Dimmer light upper deck

Dimmer light main deck

Dimmer in the cockpit

Extractor Fan Storehouse

Extra insulation master cabin/galley/crew - diff -

Canaletto walnut wood

Electrical raising for curtains in saloon

Electrical raising for curtains in master cabin

Electrical raising for curtains for Lower Deck (4 cabins)

Underwater Lights (2 x stern and 2 x each side)

Big shower w/led (master bathroom) -diff

Shore voltage and frequency converter A/SEA

Pullman bed in the guest cabin

LED Lights (Internal & External Areas)

Lighting rod for master bedhead

Electrical raising for roll blinds -each-

Lighting rod beneath the bed

Frequency converter for all plugs

Shore connection adapter Y 100A-240V

Assorted decorative cushions (each)

Boat curtains diff from std

Dining chairs (8)Jag Futura pelle Luxury 91 14 diff

Headboard bed in cabins diff from std

Sofa cockpit diff. from std

Sofa in cockpit diff

Mosaic shower in master bathroom diff.

Floor in master and shower bathroom diff from std

Bathroom's tops diff.

Navigation equipment - diff.from std -

Audio/Video Frequency Converter

Cooking top Bosch cm.80 in galley -diff.-

Wine cooler

Additional freezer 74 litres in galley

Mini fridge in cabin -each-

Automatic anti incendiary system fireboy in engine room (diff.)

Piece of furniture for tv on fly

Paint for outdoor furniture in teak

Audio-video configuration area 1

Fire-fighting system: smoke alarm for each cabin

Renner varnishing for the external TV cabinet on the upper deck

Primer under the antifouling

Batteries low water loss - diff from std

Door latch diff. from std

Automatic battery charger for generator

Handles of cockpit hatch and anchor storage in stainless steel

Galley: 3 ways valve on the grey water tank with normal direct exhaust

Connection mass of pulpits diff.

control of the TV electric raising device from the remote control (for the MD saloon + the UD saloon + the external TV on the upper deck)

USA liferafts- diff from std

Walls in MAIN DECK diff from std

Galley floor diff from std

Marble: galley tops diff. from standard

Carpet diff da std in cabins

Saloon sofa diff from std

Saloon rug diff from std

Dining table diff from std

Armchairs (2) in master cabin diff

Bedcovers diff from std

Custom Main, Lower, Sun and Upper Deck Audio-Video System

Cockpit chairs diff.

Chair for cockpit Dedon mod.Panama with arms – diff

TV frame in VIP cabin diff from std

Oak floor in main deck diff.

USA RAFT : 2X10 P.-DIFF

Exclusions

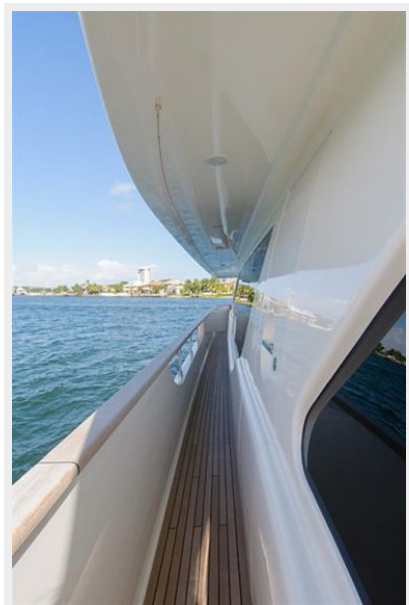
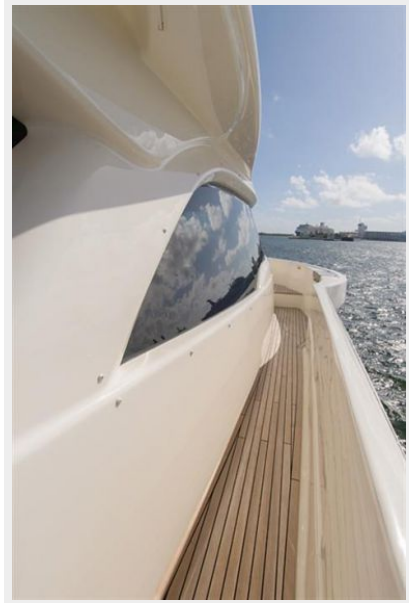
Owner's personal belongings.

Disclaimer

The Company offers the details of this vessel or yacht in good faith but cannot guarantee or warrant the accuracy of this information nor warrant the condition of the vessel. A buyer should instruct his representatives, agents, or his surveyors, to investigate such details as the buyer desires validated. This vessel or yacht is offered subject to prior sale, price change, or withdrawal without notice.

PHOTOS

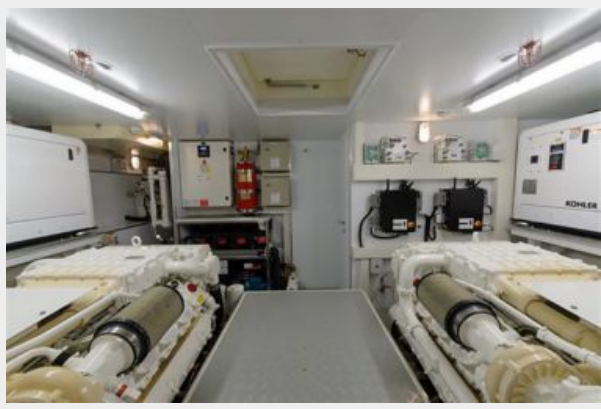








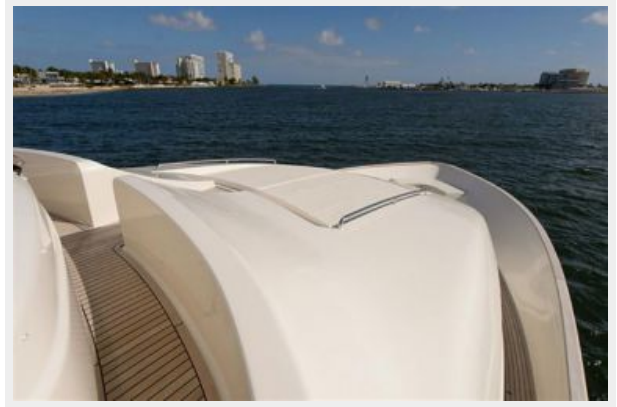








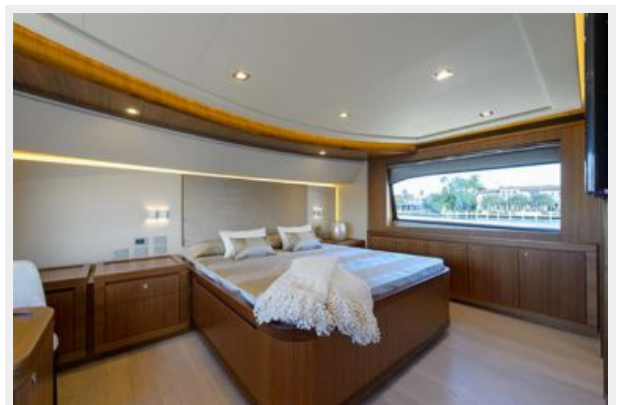














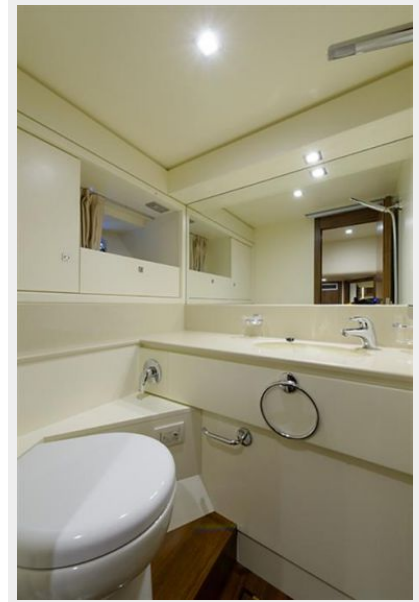














CONTACTS

Andrey Shestakov, leading yacht broker of the sales department of Shestakov Yacht Sales Inc. Shestakov Yacht Sales Inc., the official representative of the Miami/Fort Lauderdale FL headquarters.

Contact details

Email: andrey@shestakovyachtsales.com

Web: shestakovyachtsales.com/en/

Telephones

USA: +1(954)274-4435

Office hours

Monday – Saturday: **9:00 - 21:00** EDT

Sunday: **closed**

Address



Harbour Towne Marina, 850 NE 3rd St,
STE 213, Dania, FL 33004