

## PRECIOUS MOMENTS — LAZZARA



**Судостроитель:** LAZZARA

**Год постройки:** 2008

**Модель:** Моторная яхта

**Цена:** ЦЕНА ЯХТЫ ПО ЗАПРОСУ

**Местонахождение:** United States

**Длина общая:** 75' 0" (22.86m)

**Ширина:** 18' 2" (5.54m)

**Макс. осадка:** 3' 6" (1.07m)

**Крейс. скорость:** 24 Kts. (28 MPH)

**Макс. скорость:** 30 Kts. (35 MPH)

Купить **PRECIOUS MOMENTS — LAZZARA** а также выбрать подходящую вам яхту из нашего каталога яхт вам поможет опытный яхтенный брокер Андрей Шестаков. На сегодняшний день компания **Shestakov Yacht Sales Inc.** имеет большое количество яхт в собственном списке продаж, а также тесно сотрудничает со всеми крупными яхтенными производителями по всему миру.

Для того чтобы купить яхту **PRECIOUS MOMENTS — LAZZARA** а также проконсультироваться по любому вопросу связанному с покупкой, продажей, чартером яхт позвоните по телефону **+7(918)465-66-44**.

# ОГЛАВЛЕНИЕ

ОГЛАВЛЕНИЕ	2
ХАРАКТЕРИСТИКИ	4
Обзор	4
Основная информация	4
Размеры	4
Скорость, вместимость и масса	4
Размещение	4
Корпус и палуба	5
Информация о двигателе	5
ПОДРОБНОЕ ОПИСАНИЕ	6
INTRODUCTION	6
MAIN SALON	6
GALLEY/DINETTE	6
MASTER STATEROOM	7
MASTER BATHROOM	7
2 VIP STATEROOMS	8
VIP BATHROOMS	8
FORWARD GUEST STATEROOM	9
FORWARD GUEST BATHROOM	9
CREW QUARTERS	9
CREW HEAD	10
ELECTRONICS	10
COMMUNICATIONS	10
NAVIGATION	10
ELECTRICAL	11
MAIN DECK OUTFITTING	12
SAFETY & FIRE PROTECTION	13
ENGINE/MECHANICAL EQUIPMENT	13

ADDITIONAL FEATURES	14
UPGRADES	15
EXCLUSIONS	16
Исключения	16
Отказ от ответственности	16
ФОТОГРАФИИ	17
Main Salon	17
Profile	17
Main Salon	17
Main Salon	17
Galley	18
Master Stateroom	18
Starboard VIP Stateroom	18
Master Bathroom	18
Port VIP Stateroom	19
Forward VIP Stateroom	19
Forward VIP Bathroom	19
Aft Deck	19
Aft Deck Dining	19
Running	19
Layout	20
КОНТАКТЫ	21
Контактная информация	21
Телефоны	21
Время работы	21
Адрес	21

# ХАРАКТЕРИСТИКИ

## Обзор

Launched in 2008, Precious Moments is the perfect venue for an intimate getaway or a fun family vacation. The yacht was recently updated with brand new electronics package including ipads, nobeltec, ISIS and more. In addition, Precious Moments has new carpets, new couches, exterior cushions and soft goods. Precious Moments accommodates 6-8 guests in four staterooms and can cruise at 24-30 knots.

## Основная информация

**Тип судна:** Моторная яхта

**Модельный год:** 2008

**Год постройки:** 2008

**Страна:** United States

## Размеры

**Длина общая:** 75' 0" (22.86m)

**Ширина:** 18' 2" (5.54m)

**Макс. осадка:** 3' 6" (1.07m)

## Скорость, вместимость и масса

**Крейс. скорость:** 24 Kts. (28 MPH)

**Макс. скорость:** 30 Kts. (35 MPH)

**Водоизмещение:** 81000 Pounds

**Вместимость воды:** 200 Gallons

**Вместимость сточного бака:** 100 Gallons **Объем топливного бака:** 830 Gallons

## Размещение

**Всего кают:** 4

**Спальные места:** 8

**Каюты экипажа:** 1

**Койки экипажа:** 2

**Спальных мест экипажа:** 2

**Комм. состав экипажа:** 1

## Корпус и палуба

---

**Материал корпуса:** Fiberglass

## Информация о двигателе

---

**Двигатели:** 4

**Производитель:** Volvo Penta

**Модель:** IPS Pod Drives

**Тип двигателя:** Inboard

**Тип топлива:** Diesel

---

# ПОДРОБНОЕ ОПИСАНИЕ

---

## INTRODUCTION

---

Launched in 2008, Precious Moments is the perfect venue for an intimate getaway or a fun family vacation. The yacht was recently updated with brand new electronics package including ipads, nobeltec, ISIS and more. In addition, Precious Moments has new carpets, new couches, exterior cushions and soft goods. Precious Moments accommodates 6-8 guests in four staterooms and can cruise at 24-30 knots.

## MAIN SALON

---

- Overhead Lighting LED
- Nightlight ( 2 each, red)
- Lighting 120 low volt, halogen
- High gloss wood interior
- Storage cabinets
- Salon carpet/pad, flooring with wood flooring at entry way
- Sectional sofa in Ultra-leather
- Lounge chair
- Pleated fabric shades
- Sunroof, retractable hydraulic
- Wet Bar includes refrigerator
- Bar storage, cabinet with bottle and glass racks
- Coffee table
- 120 VAC duplex receptacles
- Two rain gears locker
- Toshiba 42 " LCD TV
- Bose Lifestyle 28 series III home theater system with surround sound

## GALLEY/DINETTE

---

- Toshiba 23" HL V 86 LCD TV with DVD
- Microwave/ convention oven
- Designer range hood
- Stainless steel appliances
- Side by side refrigerator
- Scottsman icemaker
- Granite countertops
  
- Cook-top recessed four - burner

- Storage cabinets, upper and lower
- Settee with storage
- Custom dinette table with storage
- Glass serving area
- Lighting, indirect
- Wood plank floor
- Fire blanket
- Two barstools
- 120 Vac duplex receptacles ( GFI protected)
- Stainless steel " Apron" Sink with single lever

Laundry Center:

- Bosch stacked washer & dryer
- Linen closet

---

## MASTER STATEROOM

---

- 32" Toshiba LCD TV with DVD / CD player
- Sonance I port in wall docking system for Ipod map 350
- Sonance I port video upgrade kit
- Walk around Lazzara- size King bed w/ innerspring mattress
- Vanity with makeup mirror
- Ottoman desk chair
- Two dressing bureaus port side w/ 6 drawers each
- Two dressing bureaus stbd side w/ 6 drawers each
- Veneered night stand, port & stbd w/ wood tops and drawers/ bureaus, port and stbd with " soft close" drawers
- Upholstered loveseat starboard side
- Shades over panoramic windows
- Private access to head
- Carpeted through-out
- Majilite overhead panels w/ foam backing
- Fabric wall coverings, removable panels
- Two " Horizon" panoramic windows
- Window treatment
- Direct and Indirect lighting with decorative sconces
- Receptacles: 120 VAC duplex

---

## MASTER BATHROOM

---

- Sharp 15 AQUOS LCD TV 4:3 with tuner & speakers
- Marble vanity top w/ two under mount sinks
- Brushed nickel fixtures
- Closet w/ mirrored doors
- Clothing bureau w/ drawers
- Medicine cabinet w/ beveled mirror
- Infinity edge marble flooring
- Marble enclosed full size shower w/ seamless glass enclosure
- Headhunter marine toilet
- Shower panel system w/ multiple body sprays
- Exhaust fan
- Two 120 VAC duplex receptacles w/ ground fault breakers
- Linen closet
- Pull out clothes hamper

---

## 2 VIP STATEROOMS

---

- Lazzara double size bed with innerspring mattress
- Glass window on inboard cabin wall
- Headboard
- Hanging locker with full length mirrored door
- Nightstand w/ drawers
- Storage drawers under bed
- Carpet through-out
- Majilite overhead panels with foam backing
- Blinds over window
- "Horizon" panoramic windows
- Direct & indirect Lighting
- Receptacle: 120 VAC duplex
- Upgraded bilge access and storage

---

## VIP BATHROOMS

---

- Headhunter marine toilet
- Power vent fan
- Glass towel shelf with rails
- Storage, medicine cabinet w/ frosted glass front
- Custom vanity with marble flooring
- Shower panel system w/ multiple body spray
- Chrome and brushed nickel fixtures
- Marble shower w/ seamless glass enclosure
- Shower panel system w/ double body spray



- Wall mounted soap dish tumbler and tissue holder
- 120 VAC duplex receptacles ( GFI protected)

---

## FORWARD GUEST STATEROOM

---

- Toshiba 15" LCD TV with DVD
- Lazzara queen bed with innerspring mattress
- Hanging locker
- Chain locker bulkhead with access
- Storage cabinet w/ drawers and shelves
- 24V reading lights ( 12 volt) LED
- Lighting low voltage AC halogen
- Deck hatch/screen/blackout
- Carpeted through-out
- Storage under bed
- 120 VAC duplex receptacles
- Chrome and brushed nickel fixtures

---

## FORWARD GUEST BATHROOM

---

- Infinity edge marble flooring
- Lighting low voltage AC halogen
- Power vent fan
- Shower panel system w/ multiple body sprays
- Shower with seamless glass enclosure
- Headhunter marine toilet
- Storage & medicine cabinet
- Vanity with marble countertop and back splash
- Wall mounted soap dish, tumbler and tissue holder
- 120 VAC duplex receptacles (GFI protected)

---

## CREW QUARTERS

---

- Access to engine room
- Access to main deck
- Bunk, lower with storage drawers
- Bunk, upper
- Flooring & carpet
- Lighting, low voltage AC halogen
- Outlets 120 V GFI protected

---

## CREW HEAD

---

- Headhunter marine toilet
- Shower and Sink
- 120 VAC duplex receptacles ( GFI protected)

---

## ELECTRONICS

---

### Alarms/ Monitors:

- NEW Lazzara 64 channel ISIS 500 vessel monitoring system including:
  - Dynamic diagnostics
  - 1 15" LCD monitor at helm, 1 19 " LCD monitor in engine room
  - ECM output from engine monitor / alarm electronics
  - Generator systems alarm/ monitoring
  - Tank level readout and alarms
  - Fire Zone alarm for engine room
  - Bilge alarms and pump run indication
  - Auto fire discharge alarm
  -

---

## COMMUNICATIONS

---

- One VHF Simrad RS - 87 VHF radio / fog horn/ hailer
- Telular cell phone GSM 850 / 1900 w/ 3db cell antenna
- Sea Key telematics w/SOS

---

## NAVIGATION

---

- UPDATED Noboltec Navigation System
- Salon Helm Station
- Fully instrumented helm console, including electronic engine controls
- One single custom electric helm chair, fully adjustable, leather ( electric D/C ) , One double seat companion chair adjustable manually fore and aft
- GPS/plotter/radar/sounder Noboltec Admiral V. 10
- Autopilot: Simrad AP 26
- Compass displays: Simrad IS 15
- (3) 15" LCD displays
- Volvo Speed/ depth/ temp

---

## ELECTRICAL

---

### Enhanced Electronic Package Includes:

- KVH SAT 525 Trac phone system
- CCTV system with dome camera in engine room
- Output to helm monitor Thermo Vision Mariner Imaging system
- Thermal night vision camera by FLIR systems with output to helm monitor
- Simrad Bluetooth wireless autopilot control
- Four additional satellite TV receivers

### Exterior Lighting:

- Overhead LED lights aft deck

### Navigation Lights:

- Fwd. streaming lights, Port/ Stbd. side running lights, Stern running light, Anchor light
- Exterior LED deck lights
- Aft deck LED transom stairs
- Boat deck LED lighting
- Searchlight, Chrome

### Interior Lighting:

- Overhead LED lighting ( low voltage DC)
- Emergency 24 volt DC lighting

### Shore Power:

- Glendenning cable master @ 100 Amp/240V/60 cycle w/ 100 ft. cord and wireless remote
- Isolation transformer, 240V/24 KVA/100 Amp
- Batteries ( AGM ) Group 31
- 2 GPL 3100T for generator
- 8 GPL 3100 T/M for engines
- 2 GPL 40 L for house
- 2 battery charges ( 40 Amp Carles charges)
- Panel AC main selector -240 V
- Panel main distribution - AC / DC

### Generator:

- Onan 27.5 kw

#### Electrical Grounding:

- Bonding system w/ large zinc hull plate
- IPS w/ separate drive and hull zincs

## MAIN DECK OUTFITTING

---

#### Anchor & Anchor handling:

- Anchor, stainless steel
- Anchor chain storage in forepeak locker
- Anchor Chute, stainless steel
- Anchor wash-down spigot with hose
- Windlass, chain w/ controls

#### Deck Hardware:

- Forward sunpad speaker craft for two 5" speakers
- Air Horn
- Windshield wiper system 24 vdc / pantograph type with washer system
- Lazzara custom 16" bow, sprint ans stern cleats, 316L steel rails on main deck
- Forward hatch to bow cabin
- Bulwark boarding doors port and stbd.
- Teak aft deck and swim platform deck

#### Aft Deck Transom/ Outfitting:

- Aft Deck Sunbrite 20" TV all weather LCD HDTV compatible with fold up lift
- Deck self - bailing
- Teak flooring
- Indirect Lighting
- Aft stateroom access hatch
- Teak steps, stbd. access hatch for engine room
- Storage side panels - port
- Corian table in cockpit
- Spears overhead
- Overhead cockpit lights
- Low level courtesy lights
- Aft deck bar w/ stools
- Ships bell

- Stainless steel baby gates w/ acrylic inserts
- Storage compartments

---

## SAFETY & FIRE PROTECTION

---

- Fire suppression system- automatic with engine shutdown, override and manual pull
- Carbon monoxide detectors in crew cabin and master head

Exhaust System:

- Underwater, through drive units

---

## ENGINE/MECHANICAL EQUIPMENT

---

- 4 x Volvo IPS 600 Systems
- Nibral duo - prop

Air Conditioning System:

- Six zone 92,000 BTU air conditioning system with air handlers and thermostats for each zone
- Touch pad controls
- Insulated copper piping supply and return lines
- Individual head exhaust fans
- Bilge System:
  - 24 VDC automatic bilge pumps( 1 aft, 1 fwd., 1 engine room)
  - 24 VDC high-water alarm ( 1 aft, 1 fwd., 1 engine room)
  - Two Emergency bilge pumps, engine driven

Control & Instrument Main Engines:

- Volvo display all engines
- Station Transfer panels
- Shift & Throttle controls, electronic with engine sync

- Volvo joystick control for docking and slow speed maneuverability
- Volvo Electronic Steering
- Key Switch Start/stop

#### Cockpit control Station:

- Joystick control Volvo
- Station transfer panels
- Start/stop panels
- Lazzara Engineered " Ultra Sound" engine room system
- Interior " Isolation Dampering" system
- Thermo barrier foil

#### Engine Room:

- Epoxy coated engine room, White
- Flooring, metal diamond plate
- Volvo control panel for engines & drives
- Fresh water hose & spigot
- Aft Deck access
- Forward engine room stateroom access
- Lazzara engineered " ultra sound" engine room
- Powered ventilation system
- Engine hours as of 8/11/15:
  - Port Outboard: 988 hours ( EMC was replaced )
  - Port Inboard: 1451 hours
  - Stbd Outboard: 1433 hours
  - Stbd Inboard: 697 hours (Engine was replaced)
- Kohler 22kw Generator hours as of 10/27/15: 2261
- 2x 8 man Revere offshore Elite (deluxe liferaft)

## ADDITIONAL FEATURES

---

New: IPAD Crestron Entertainment System

Brownie Hookah Diving Pkg: B230X includes an oil free electric compressor and reservoir bottle, powered level winding reel with 150ft of hose, 2 diver sets with hose belts and regulators.

### Exterior Teak Pkg:

- Teak weather decks and bow decks
- Sunbrella rail covers
- Teak aft deck table in lieu of Corian

Electronic smart glass UV protected mirror finish heat resistant tint.

Transom Garage door window looking into engine room, laminated glass port Stbd. VIP staterooms, laminated glass, 120 volt activated, dual mode: transparent & opaque

### Underwater Lighting & Camera Pkg:

- Six high intensity metal halide underwater lights
- Sea Vision underwater color camera with output to LCD monitor at helm station

Watermaker : Sea Recovery reverse osmosis watermaker, 450 gallon per day

## UPGRADES

---

- Lowest time Lazzara 75ft LSX on the market
- New Williams Jet tender
- New IPAD Crestron Entertainment System
- New ISIS Computer System
- Updated NOBELTEC Navigation System
- 2x 8 man Revere offshore Elite (deluxe liferaft)
- New carpet throughout the yacht
- Two new leather couches
- New exterior cushions
- New exterior canvas covers
- Updated Crestron system
- New bottom Paint

- Upgraded Teak decks from Decksters
- Marble polished throughout
- AC serviced
- Only 1150 Hours on engines
- Two sets of spare props
- Spare rebuilt upper and lower unit package

## EXCLUSIONS

---

- Coffee machines
- Towels
- Kitchen items
- Tools

## Исключения

---

При продаже яхты исключаются личные вещи владельца.

## Отказ от ответственности

---

Компания предоставляет описание судна или яхты добросовестно, но не может гарантировать точность этой информации, а также не ручается за техническое состояние. Покупатель должен проинструктировать своих агентов или оценщиков исследовать представленную информацию более подробно, по собственному желанию. Продажа судна или яхты, изменение цены или снятие с продажи будет происходить без предварительного уведомления.

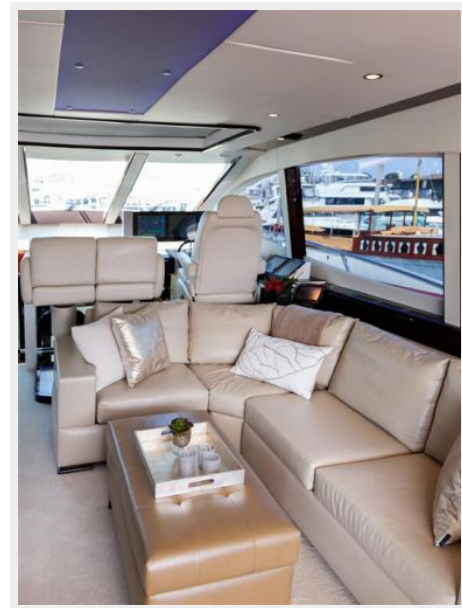


# ФОТОГРАФИИ

Profile



Main Salon



Main Salon



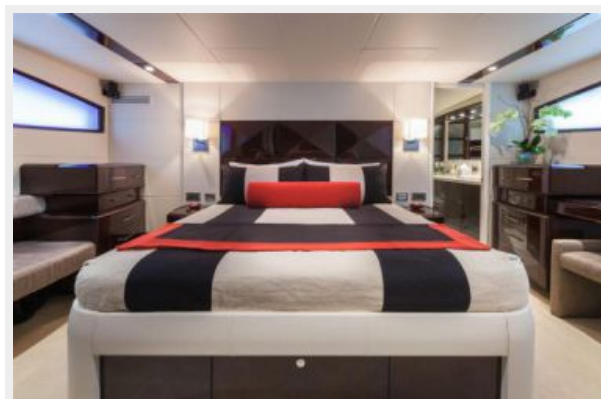
Main Salon



**Galley**



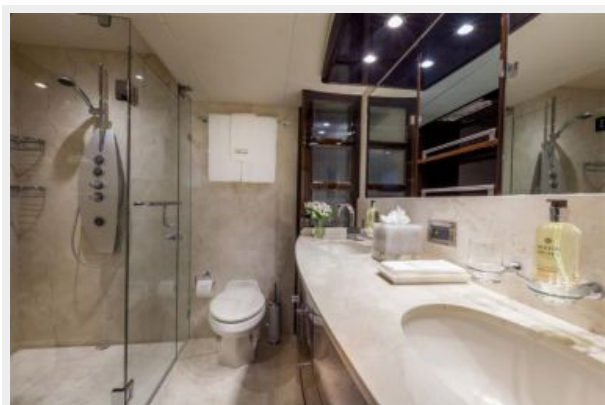
**Master Stateroom**



**Starboard VIP Stateroom**



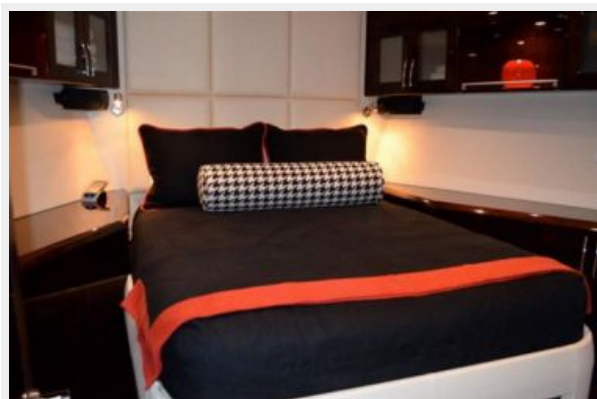
**Master Bathroom**



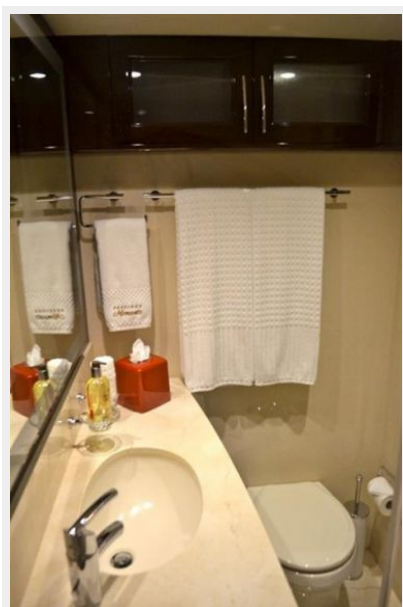
**Port VIP Stateroom**



**Forward VIP Stateroom**



**Forward VIP Bathroom**



**Aft Deck**



**Aft Deck Dining**

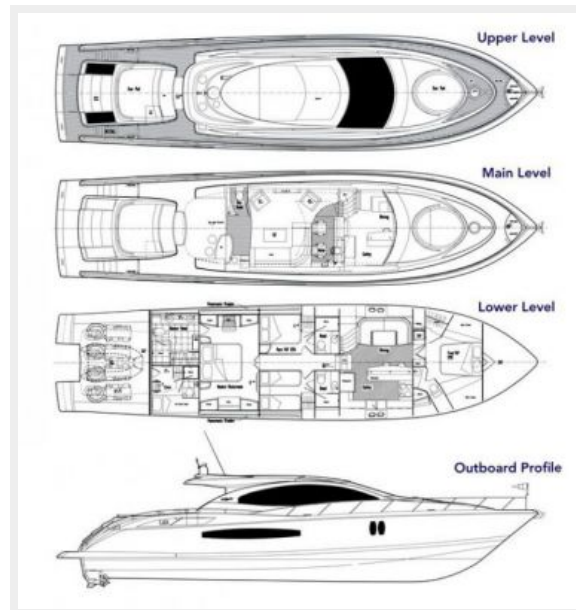


**Running**





## Layout



# КОНТАКТЫ

---

Андрей Шестаков (Andrey Shestakov) – ведущий яхтенный брокер отдела продаж яхт и судов компании Shestakov Yacht Sales Inc. Официальный представитель Shestakov Yacht Sales Inc. для русскоговорящих клиентов в центральном офисе компании в Майами/Форт Лодердейл/Флорида/США.

## Контактная информация

---

Email: [andrey@shestakovyachtsales.com](mailto:andrey@shestakovyachtsales.com)

Web: [shestakovyachtsales.com](http://shestakovyachtsales.com)

## Телефоны

---

Краснодарский край: **+7(918)465-66-44**

США, Майами, Флорида: **+1(954)274-4435**

## Время работы

---

Понедельник – Суббота: **9:00 - 21:00**  
EDT

Воскресенье: **Закрето**

## Адрес

---



Harbour Towne Marina, 850 NE 3rd St,  
STE 213, Dania, FL 33004