

4YOU — HEESEN YACHTS



Builder: HEESEN YACHTS

Year Built: 2009

Model: Motor Yacht

Price: PRICE ON APPLICATION

Location: France

LOA: 154' 3" (47.00m)

Beam: 27' 11" (8.50m)

Max Draft: 8' 3" (2.50m)

Cruise Speed: 22 Kts. (25 MPH)

Max Speed: 24 Kts. (28 MPH)

Our experienced yacht broker, Andrey Shestakov, will help you choose and buy a yacht that best suits your needs 4YOU — HEESEN YACHTS from our catalogue. Presently, at Shestakov Yacht Sales Inc., we have a wide variety of yachts available on our sale's list. We also work in close contact with all the big yacht manufacturers from all over the world.

If you would like to buy a yacht 4YOU — HEESEN YACHTS or would like help answering any questions concerning purchasing, selling or chartering a yacht, please call +1(954)274-4435

TABLE OF CONTENTS

TABLE OF CONTENTS	2
SPECIFICATIONS	4
Overview	4
Basic Information	4
Dimensions	4
Speed, Capacities and Weight	4
Accommodations	5
Hull and Deck Information	5
Engine Information	5
DETAILED INFORMATION	6
ACCOMODATION	6
WALKTHROUGH	6
CAPACITIES	6
MAIN MACHINERY	7
OTHER MACHINERY	7
ELECTRICITY	7
GALLEY & LAUNDRY EQUIPMENT	7
COMMUNICATIONS, NAVIGATION & ENTERTAINMENT EQUIPMENT	7
DECK EQUIPMENT	8
A/V EQUIPMENT	8
SAFETY & SECURITY EQUIPMENT	8
TENDERS & WATERSPORTS EQUIPMENT	8
Exclusions	9
Disclaimer	9
PHOTOS	10
CONTACTS	16
Contact details	16
Telephones	16

Office hours	16
Address	16

SPECIFICATIONS

Overview

4YOU is a 47.54m Heesen built superyacht that was completed in 2009. 4YOU is a full displacement superyacht built from aluminium displaying high levels of craftsmanship and the clear pedigree of Heesen Yachts.

4YOU was designed by Frank Laupman of Omega Architects who controlled both the interior and exterior of the superyacht, giving it a sharp, reliable and powerful presence. She holds a beam of 8.50m and a draft of 2.50m, making her a luxurious and spacious superyacht.

Basic Information

Category: Motor Yacht

Model Year: 2009

Year Built: 2009

Country: France

Dimensions

LOA: 154' 3" (47.00m)

Beam: 27' 11" (8.50m)

Max Draft: 8' 3" (2.50m)

Speed, Capacities and Weight

Cruise Speed: 22 Kts. (25 MPH)

Cruise Speed RPM: 1950 Kts.

Cruise Speed Range: 2100

Max Speed: 24 Kts. (28 MPH)

Max Speed RPM: 2100 Kts.

Max Speed Range: 1728 Kts.

Gross Tonnage: 493 Pounds

Water Capacity: 18464 Gallons

Holding Tank: 313 Gallons

Fuel Capacity: 70336 Gallons

Fuel Consumption: 227 Gallons

Accommodations

Total Cabins: 5

Total Berths: 10

Sleeps: 10

Total Heads: 6

Captain Cabin: True

Crew Cabin: 4

Crew Berths: 8

Crew Sleeps: 8

Crew Heads: 4

Hull and Deck Information

Hull Material: Aluminum

Hull Color: Blue and White

Exterior Designer: Heesen Yachts &
Omega Architects

Interior Designer: Omega Architects

Engine Information

Engines: 2

Manufacturer: MTU

Model: 16V 4000 M90 (year 2009)

Engine Type: Inboard

Fuel Type: Diesel

DETAILED INFORMATION

ACCOMODATION

She accommodates 10 guests in 5 staterooms The crew quarters can accommodate 9 crew in 4 cabins: 3 cabins forward and Captain's cabin on bridge deck. • MAIN DECK Full width master suite with mini bar and ensuite shower / Steam Shower and bathroom, ensuite study/lounge, and ensuite dressing room. • LOWER DECK Four additional guest staterooms are located on the lower deck. The two VIP staterooms feature ensuite bathrooms with oversized showers. The two twin cabins also convert to doubles featuring ensuite bathrooms that are both large and modern. • SKYLounge The skylounge features a state of the art entertainment equipment, wet bar and baby grand piano. Large, plush couches and armchairs in the skylounge offer ample sitting room for guests to unwind after a long day.

WALKTHROUGH

Guests arriving on the main deck aft are welcomed into the vast main saloon, passing first through an art-embellished lobby. This leads on into a social area furnished with coffee tables, armchairs and pouffes where an eight-seater table, custom made from American walnut and topped with leather, is inlaid with intricate patterns of matt silver. The room's soft colour palette, focuses on tones of beige and taupe set against the pale background of a creamy silk carpet, while the use of semi-gloss varnish also contributes to the relaxed and cool atmosphere. Guests can also enjoy the second saloon on the upper deck, where a brightly lit sky lounge offers three comfortable sofas and a choice of poufs that can also serve as coffee tables. Here, guests can enjoy live music from a baby-grand piano that dominates the aft portion of the room, while the plasma screen is hidden by a unique piece of art deco-inspired art, made by Dutch glass maker Glass Déco, this combines several panels of glass, delicately coloured in pale blue and light gold, to create a marine scene. A further example of inlaid stainless steel can be seen in the doors of a dark wood cabinet. An elegant full-service bar topped with *American walnut* and white *Carrara marble* is positioned aft, adjacent to the sliding doors that give access to the aft portion of the bridge deck, where the primary function is open air dining.

Sundeck deck offers an open-air fitness centre and a spa pool area that can be fully covered by an awning supported by carbonfibre retractable pillars. Eight guests can be accommodated on the lower deck in four cabins, of which two are twins and two are VIP doubles. Located forward on the main deck, the master suite is entered through the owner's office and leads on through a pair of walk-in wardrobes to the master bedroom, which occupies the yacht's full beam.

CAPACITIES

RANGE: 3400 nm (approx) 3400 nm @ 12 knots / 1200 RPM 2100 nm @ 22 knots / 1950 RPM
1728 nm @ 24 knots / 2100 RPM FUEL CAPACITY: 70,336 Litres (18,580 US Gallons) WATER

CAPACITY: 18,464 Litres (4,877 US Gallons) GREY / BLACK WATER CAPACITY: 313 Litres (82 US Gallons) FUEL CONSUMPTION: 227 Litres per hour @ 12 knots 15kn = 425l/h 18kn = 750l/h 20kn = 1050l/h 24kn = 1350l/h

MAIN MACHINERY

ENGINES: 2 x MTU 3,648HP ENGINE MODEL: 16V 4000 M90 (year 2009) ENGINE HOURS: Port: 3,154hrs (10-Sept-2014) Starboard: 3,153hrs (10-Sept-2014) FUEL: DIESEL
 PROPULSION: PROP SHAFT GEARBOXES: 2 x ZF 7550 STEERING: Northrop Grumman Sperry Marine BV STABILIZERS: VT Naiad Marine model (720) Generators : GENERATORS: 2 x John Deere 146 kW / 1500 RPM, Output: 400V, 3 phase, 50 Hz GENERATOR HOURS: Port: 8,705hrs (10-Sept-2014) ; Starboard: 8,567hrs (10-Sept-2014)

OTHER MACHINERY

Bow Thrusters: HRP type 1001 Watermakers: 2 x HEM 25/1400/Modular Bilge water filtration: RWO SKIT/5-DEB Sewage system: HAMANN 7532 Fresh water system: HEM Aguana UV HEM Silver 20 Lube oil: 772 Litres Waste oil: 1,000 Litres Fuel filtration: Sea Westfalia OTL2-02-137

ELECTRICITY

Electricity: 400V, 3 phase, 50 Hz Incoming volts: 170-520 Incoming Hz: 40-70 Output volts: 230/400 Output amps: 2 x 78 Output Hz: 50 SHORE POWER: ASEA, Model: AC 54-3, 2 x 50 kVA BATTERIES: Emergency batteries: 24V, 400Amp Air Conditioning : Heinen & Hopman

GALLEY & LAUNDRY EQUIPMENT

Galley Equipment 1 x Miele 4 Plate Induction hob 1 x Miele microwave 2 x Foster refrigerators 2 x Foster freezers 1 x Miele fryer 2 x Miele dishwashers 1 x Brean trashcompactor 1 x Miele Induction Wok Plate 2 x Miele 2 plate Induction hob 1 x Gaggenau oven Crew Galley Equipment 1 x Miele microwave 1 x Refrigerator (1/2 size) 1 x Miele dishwasher Laundry Equipment 3 x Miele washers (PW 065 Plus) 3 x Miele dryers (PT 7136 Plus) 1 x Miele steam roller

COMMUNICATIONS, NAVIGATION & ENTERTAINMENT EQUIPMENT

Communications Equipment Seatel 4006-VSAT Satcom Panasonic KX-PT 343 Telephone system 2 x Seatel 4004 Satellite TV Cisco WIFI Network system 2 x QNAP Servers Crestron Entertainment system Sailor C4900 VHF fixed Thrane & Thrane sailor RT5022 VHF DSC Jotron Tron TR20 VHF Handheld Panasonic integrated Intercom system Computer on bridge deck

Computer in engine room HP Printer **Navigation Equipment** 2 x Furuno Radar / ARPA FAR-2117 Sperry Marine / Navipilot 4000 Autopilot Furuno RD-30 Wind indicator Plath / Venus Compass Furuno FE 700 Depth Sounder Furuno RD-30 Video Sounder SAAB RY SatNav SAAB RY GPS Sailor AIS Furuno NX-700 Navtex Transas Navi-Sailor 4000 ECS Plotter software Sperry C.Plath / Sperry Navigation x mk2 Gyrocompass Furuno Doppler speeding DS-80 speed indicator

DECK EQUIPMENT

Staalart Z3-17SED Anchor Windlass system Electric/Hydraulic Stern Boarding Gangway 2 x Staalart Capstans on Aft Deck 1 x Hydromar Davit (capacity 500kg) 2 x Anchors, chain dimensions 110m, 69mm, 18mm RCL 600A/12V Spotlights

A/V EQUIPMENT

Master Cabin Guest Cabins (x4) 1 Sharp Aguos TV 1 Sharp Aguos TV 1 Pioneer VSX 1018 AH 1 Integra DTR 20.4 1 Mini I Pad Controler 1 Mini I Pad Controler 1 Sky Box HD 1 Sky Box HD 1 Kaleidoscope 1 Kaleidoscope 1 Apple TV 1 Apple TV 1 Dune HD 1 Dune HD 1 Pioneer Blu-Ray 1 Pioneer Blu-Ray Crew Bridge 1 Sharp Aguos TV 1 Denon Multiplayer 1 Pioneer DV-610 1 Amplifier 1 Pioneer Stereo's 1 Pioneer Stereo Main Saloon Galley 1 Sharp Aguos TV 1 Pioneer Stereo 1 Pioneer Blu-Ray 1 Mini I Pad Controler 1 Dune Katrina HD 1 Apple TV 1 Kaleidoscope 1 Sky Box HD

SAFETY & SECURITY EQUIPMENT

Security Equipment Samsung CCTV System 3 x Monitors (Crew, Engine Room, Bridge) All Alarm Doors 7 x Cameras (3 x Main Deck, 1 x Tender Garage, 2xEngine Room, 1 x Mast) 2 x Ships Safes (Owners Cabin, Captain's Cabin) Fire Fighting Equipment 23 x Detectors in all locations 2 x Asbestos Firefighting Suits 33 x Fire Extinguishers in All Decks/Tender Garage 6 x Seawater Firefighting Stations in All Decks 1 x Fixed CO² Fire System in Engine Room/Galley **Safety Equipment** 3 x M.O.B Liferings 1 x Jotron Tron 40S EPRIB 6 x Hanson Ikaros Flares 4 x Zodiac Liferrafts for 12 people Medical Equipment and supplies for 10 crew - Cat A

TENDERS & WATERSPORTS EQUIPMENT

1 x 6m Castoldi Jet with Yanmar jet 1 x Exercise bike 1 x Yamaha Super jet stand up 4 x Fishing Penn reels + 4 x Penn rods 1 x Cross Trainer 4 x Sets of Dive gear incl. various wetsuits 1 x Bauer dive compressor 12 x Sets of flippers, masks and snorkels 2 x Water skis 1 x Cayago 4.12 Seabob 1 x Jacuzzi Spa on Sun Deck / Marine Pool system for 8-10 people 1 x Zodiac Classic inflatable with Yamaha 9.9 HP outboard 1 x Jet surf 2 x Wakeboards 1 x Cayago VX2 Seabob 2 x Yamaha VX cruiser Jet Skis

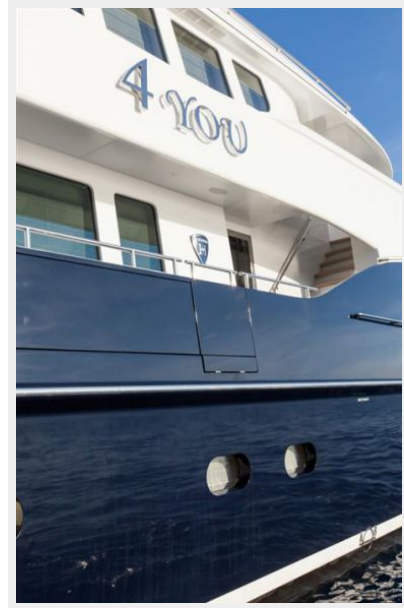
Exclusions

Owner's personal belongings.

Disclaimer

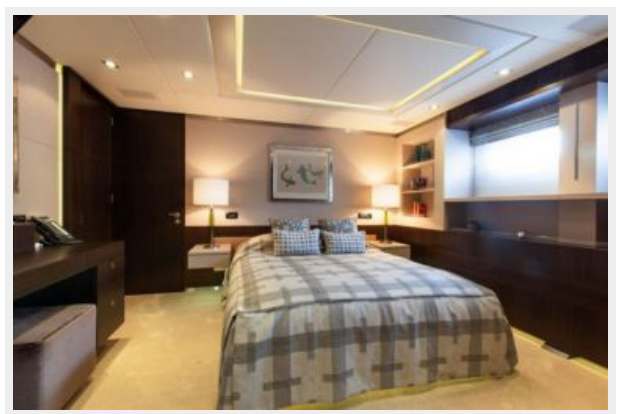
The Company offers the details of this vessel or yacht in good faith but cannot guarantee or warrant the accuracy of this information nor warrant the condition of the vessel. A buyer should instruct his representatives, agents, or his surveyors, to investigate such details as the buyer desires validated. This vessel or yacht is offered subject to prior sale, price change, or withdrawal without notice.

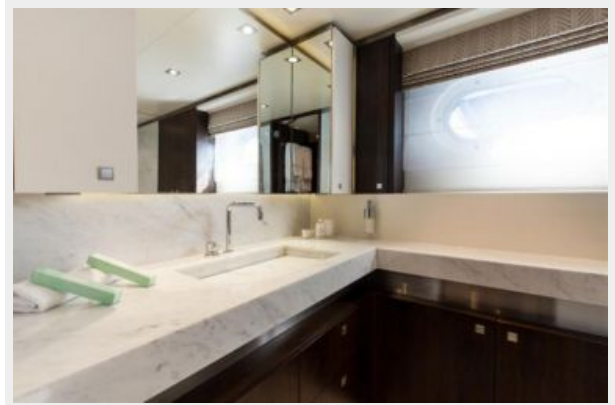
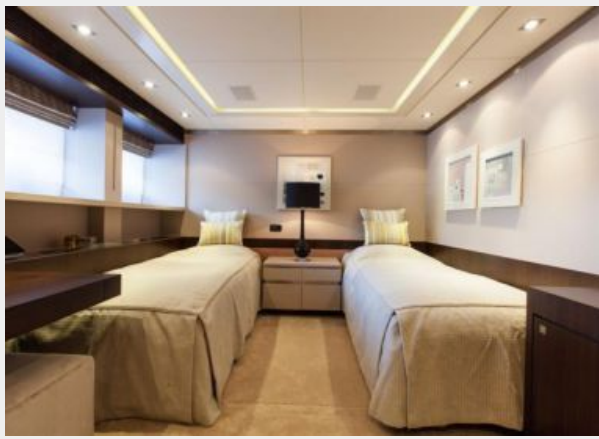
PHOTOS

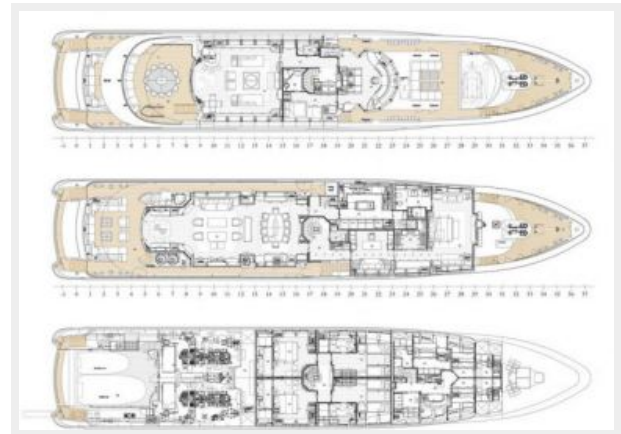
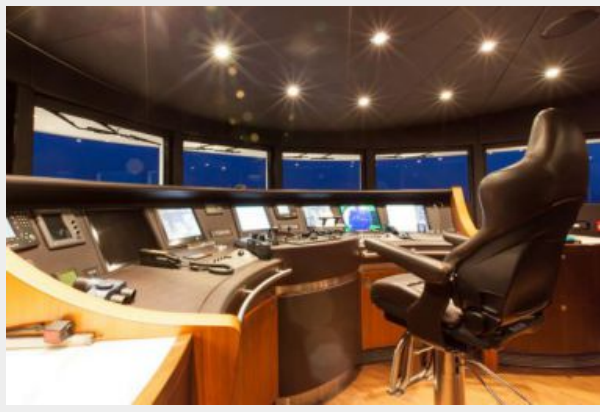












CONTACTS

Andrey Shestakov, leading yacht broker of the sales department of Shestakov Yacht Sales Inc. Shestakov Yacht Sales Inc., the official representative of the Miami/Fort Lauderdale FL headquarters.

Contact details

Email: andrey@shestakovyachtsales.com

Web: shestakovyachtsales.com/en/

Telephones

USA: +1(954)274-4435

Office hours

Monday – Saturday: **9:00 - 21:00** EDT

Sunday: **closed**

Address



Harbour Towne Marina, 850 NE 3rd St,
STE 213, Dania, FL 33004