

4YOU — HEESEN YACHTS



Судостроитель: HEESEN YACHTS

Год постройки: 2009

Модель: Моторная яхта

Цена: **ЦЕНА ЯХТЫ ПО ЗАПРОСУ**

Местонахождение: France

Длина общая: 154' 3" (47.00m)

Ширина: 27' 11" (8.50m)

Макс. осадка: 8' 3" (2.50m)

Крейс. скорость: 22 Kts. (25 MPH)

Макс. скорость: 24 Kts. (28 MPH)

Купить 4YOU — HEESEN YACHTS а также выбрать подходящую вам яхту из нашего каталога яхт вам поможет опытный яхтенный брокер Андрей Шестаков. На сегодняшний день компания Shestakov Yacht Sales Inc. имеет большое количество яхт в собственном списке продаж, а также тесно сотрудничает со всеми крупными яхтенными производителями по всему миру.

Для того чтобы купить яхту 4YOU — HEESEN YACHTS а также проконсультироваться по любому вопросу связанному с покупкой, продажей, чартером яхт позвоните по телефону **+7(918)465-66-44**.

ОГЛАВЛЕНИЕ

ОГЛАВЛЕНИЕ	2
ХАРАКТЕРИСТИКИ	4
Обзор	4
Основная информация	4
Размеры	4
Скорость, вместимость и масса	4
Размещение	5
Корпус и палуба	5
Информация о двигателе	5
ПОДРОБНОЕ ОПИСАНИЕ	6
ACCOMODATION	6
WALKTHROUGH	6
CAPACITIES	6
MAIN MACHINERY	7
OTHER MACHINERY	7
ELECTRICITY	7
GALLEY & LAUNDRY EQUIPMENT	7
COMMUNICATIONS, NAVIGATION & ENTERTAINMENT EQUIPMENT	7
DECK EQUIPMENT	8
A/V EQUIPMENT	8
SAFETY & SECURITY EQUIPMENT	8
TENDERS & WATERSPORTS EQUIPMENT	8
Исключения	9
Отказ от ответственности	9
ФОТОГРАФИИ	10
КОНТАКТЫ	16
Контактная информация	16
Телефоны	16

Время работы	16
Адрес	16

ХАРАКТЕРИСТИКИ

Обзор

4YOU is a 47.54m Heesen built superyacht that was completed in 2009. 4YOU is a full displacement superyacht built from aluminium displaying high levels of craftsmanship and the clear pedigree of Heesen Yachts.

4YOU was designed by Frank Laupman of Omega Architects who controlled both the interior and exterior of the superyacht, giving it a sharp, reliable and powerful presence. She holds a beam of 8.50m and a draft of 2.50m, making her a luxurious and spacious superyacht.

Основная информация

Тип судна: Моторная яхта

Модельный год: 2009

Год постройки: 2009

Страна: France

Размеры

Длина общая: 154' 3" (47.00m)

Ширина: 27' 11" (8.50m)

Макс. осадка: 8' 3" (2.50m)

Скорость, вместимость и масса

Крейс. скорость: 22 Kts. (25 MPH)

Крейсерская скорость поворота: 1950 Kts.

Дальность на крейсерской скорости: 2100

Макс. скорость: 24 Kts. (28 MPH)

Макс. скорость поворота: 2100 Kts.

Дальность на макс. скорости: 1728 Kts.

Чистый вес: 493 Pounds

Вместимость воды: 18464 Gallons

Вместимость сточного бака: 313 Gallons

Объем топливного бака: 70336 Gallons

Расход топлива: 227 Gallons

Размещение

Всего кают: 5

Всего коек: 10

Спальные места: 10

Всего ком. состава: 6

Каюта капитана: Да

Каюты экипажа: 4

Койки экипажа: 8

Спальных мест экипажа: 8

Комм. состав экипажа: 4

Корпус и палуба

Материал корпуса: Aluminum

Цвет корпуса: Blue and White

Дизайнер экстерьера: Heesen Yachts & Omega Architects

Дизайнер интерьера: Omega Architects

Информация о двигателе

Двигатели: 2

Производитель: MTU

Модель: 16V 4000 M90 (year 2009)

Тип двигателя: Inboard

Тип топлива: Diesel

ПОДРОБНОЕ ОПИСАНИЕ

ACCOMODATION

She accommodates 10 guests in 5 staterooms The crew quarters can accommodate 9 crew in 4 cabins: 3 cabins forward and Captain's cabin on bridge deck. • MAIN DECK Full width master suite with mini bar and ensuite shower / Steam Shower and bathroom, ensuite study/lounge, and ensuite dressing room. • LOWER DECK Four additional guest staterooms are located on the lower deck. The two VIP staterooms feature ensuite bathrooms with oversized showers. The two twin cabins also convert to doubles featuring ensuite bathrooms that are both large and modern. • SKYLounge The skylounge features a state of the art entertainment equipment, wet bar and baby grand piano. Large, plush couches and armchairs in the skylounge offer ample sitting room for guests to unwind after a long day.

WALKTHROUGH

Guests arriving on the main deck aft are welcomed into the vast main saloon, passing first through an art-embellished lobby. This leads on into a social area furnished with coffee tables, armchairs and pouffes where an eight-seater table, custom made from American walnut and topped with leather, is inlaid with intricate patterns of matt silver. The room's soft colour palette, focuses on tones of beige and taupe set against the pale background of a creamy silk carpet, while the use of semi-gloss varnish also contributes to the relaxed and cool atmosphere. Guests can also enjoy the second saloon on the upper deck, where a brightly lit sky lounge offers three comfortable sofas and a choice of poufs that can also serve as coffee tables. Here, guests can enjoy live music from a baby-grand piano that dominates the aft portion of the room, while the plasma screen is hidden by a unique piece of art deco-inspired art, made by Dutch glass maker Glass Déco, this combines several panels of glass, delicately coloured in pale blue and light gold, to create a marine scene. A further example of inlaid stainless steel can be seen in the doors of a dark wood cabinet. An elegant full-service bar topped with *American walnut* and white *Carrara marble* is positioned aft, adjacent to the sliding doors that give access to the aft portion of the bridge deck, where the primary function is open air dining.

Sundeck deck offers an open-air fitness centre and a spa pool area that can be fully covered by an awning supported by carbonfibre retractable pillars. Eight guests can be accommodated on the lower deck in four cabins, of which two are twins and two are VIP doubles. Located forward on the main deck, the master suite is entered through the owner's office and leads on through a pair of walk-in wardrobes to the master bedroom, which occupies the yacht's full beam.

CAPACITIES

RANGE: 3400 nm (approx) 3400 nm @ 12 knots / 1200 RPM 2100 nm @ 22 knots / 1950 RPM
1728 nm @ 24 knots / 2100 RPM FUEL CAPACITY: 70,336 Litres (18,580 US Gallons) WATER

CAPACITY: 18,464 Litres (4,877 US Gallons) GREY / BLACK WATER CAPACITY: 313 Litres (82 US Gallons) FUEL CONSUMPTION: 227 Litres per hour @ 12 knots 15kn = 425l/h 18kn = 750l/h 20kn = 1050l/h 24kn = 1350l/h

MAIN MACHINERY

ENGINES: 2 x MTU 3,648HP ENGINE MODEL: 16V 4000 M90 (year 2009) ENGINE HOURS: Port: 3,154hrs (10-Sept-2014) Starboard: 3,153hrs (10-Sept-2014) FUEL: DIESEL PROPULSION: PROP SHAFT GEARBOXES: 2 x ZF 7550 STEERING: Northrop Grumman Sperry Marine BV STABILIZERS: VT Naiad Marine model (720) Generators : GENERATORS: 2 x John Deere 146 kW / 1500 RPM, Output: 400V, 3 phase, 50 Hz GENERATOR HOURS: Port: 8,705hrs (10-Sept-2014) ; Starboard: 8,567hrs (10-Sept-2014)

OTHER MACHINERY

Bow Thrusters: HRP type 1001 Watermakers: 2 x HEM 25/1400/Modular Bilge water filtration: RWO SKIT/5-DEB Sewage system: HAMANN 7532 Fresh water system: HEM Aguana UV HEM Silver 20 Lube oil: 772 Litres Waste oil: 1,000 Litres Fuel filtration: Sea Westfalia OTL2-02-137

ELECTRICITY

Electricity: 400V, 3 phase, 50 Hz Incoming volts: 170-520 Incoming Hz: 40-70 Output volts: 230/400 Output amps: 2 x 78 Output Hz: 50 SHORE POWER: ASEA, Model: AC 54-3, 2 x 50 kVA BATTERIES: Emergency batteries: 24V, 400Amp Air Conditioning : Heinen & Hopman

GALLEY & LAUNDRY EQUIPMENT

Galley Equipment 1 x Miele 4 Plate Induction hob 1 x Miele microwave 2 x Foster refrigerators 2 x Foster freezers 1 x Miele fryer 2 x Miele dishwashers 1 x Brean trashcompactor 1 x Miele Induction Wok Plate 2 x Miele 2 plate Induction hob 1 x Gaggenau oven Crew Galley Equipment 1 x Miele microwave 1 x Refrigerator (1/2 size) 1 x Miele dishwasher Laundry Equipment 3 x Miele washers (PW 065 Plus) 3 x Miele dryers (PT 7136 Plus) 1 x Miele steam roller

COMMUNICATIONS, NAVIGATION & ENTERTAINMENT EQUIPMENT

Communications Equipment Seatel 4006-VSAT Satcom Panasonic KX-PT 343 Telephone system 2 x Seatel 4004 Satelite TV Cisco WIFI Network system 2 x QNAP Servers Crestron Entertainment system Sailor C4900 VHF fixed Thrane & Thrane sailor RT5022 VHF DSC Jotron Tron TR20 VHF Handheld Panasonic integrated Intercom system Computer on bridge deck

Computer in engine room HP Printer **Navigation Equipment** 2 x Furuno Radar / ARPA FAR-2117 Sperry Marine / Navipilot 4000 Autopilot Furuno RD-30 Wind indicator Plath / Venus Compass Furuno FE 700 Depth Sounder Furuno RD-30 Video Sounder SAAB RY SatNav SAAB RY GPS Sailor AIS Furuno NX-700 Navtex Transas Navi-Sailor 4000 ECS Plotter software Sperry C.Plath / Sperry Navigation x mk2 Gyrocompass Furuno Doppler speeding DS-80 speed indicator

DECK EQUIPMENT

Staalart Z3-17SED Anchor Windlass system Electric/Hydraulic Stern Boarding Gangway 2 x Staalart Capstans on Aft Deck 1 x Hydromar Davit (capacity 500kg) 2 x Anchors, chain dimensions 110m, 69mm, 18mm RCL 600A/12V Spotlights

A/V EQUIPMENT

Master Cabin Guest Cabins (x4) 1 Sharp Aguos TV 1 Sharp Aguos TV 1 Pioneer VSX 1018 AH 1 Integra DTR 20.4 1 Mini I Pad Controler 1 Mini I Pad Controler 1 Sky Box HD 1 Sky Box HD 1 Kaleidoscope 1 Kaleidoscope 1 Apple TV 1 Apple TV 1 Dune HD 1 Dune HD 1 Pioneer Blu-Ray 1 Pioneer Blu-Ray Crew Bridge 1 Sharp Aguos TV 1 Denon Multiplayer 1 Pioneer DV-610 1 Amplifier 1 Pioneer Stereo's 1 Pioneer Stereo Main Saloon Galley 1 Sharp Aguos TV 1 Pioneer Stereo 1 Pioneer Blu-Ray 1 Mini I Pad Controler 1 Dune Katrina HD 1 Apple TV 1 Kaleidoscope 1 Sky Box HD

SAFETY & SECURITY EQUIPMENT

Security Equipment Samsung CCTV System 3 x Monitors (Crew, Engine Room, Bridge) All Alarm Doors 7 x Cameras (3 x Main Deck, 1 x Tender Garage, 2xEngine Room, 1 x Mast) 2 x Ships Safes (Owners Cabin, Captain's Cabin) Fire Fighting Equipment 23 x Detectors in all locations 2 x Asbestos Firefighting Suits 33 x Fire Extinguishers in All Decks/Tender Garage 6 x Seawater Firefighting Stations in All Decks 1 x Fixed CO² Fire System in Engine Room/Galley **Safety Equipment** 3 x M.O.B Liferings 1 x Jotron Tron 40S EPRIB 6 x Hanson Ikaros Flares 4 x Zodiac Liferrafts for 12 people Medical Equipment and supplies for 10 crew - Cat A

TENDERS & WATERSPORTS EQUIPMENT

1 x 6m Castoldi Jet with Yanmar jet 1 x Exercise bike 1 x Yamaha Super jet stand up 4 x Fishing Penn reels + 4 x Penn rods 1 x Cross Trainer 4 x Sets of Dive gear incl. various wetsuits 1 x Bauer dive compressor 12 x Sets of flippers, masks and snorkels 2 x Water skis 1 x Cayago 4.12 Seabob 1 x Jacuzzi Spa on Sun Deck / Marine Pool system for 8-10 people 1 x Zodiac Classic inflatable with Yamaha 9.9 HP outboard 1 x Jet surf 2 x Wakeboards 1 x Cayago VX2 Seabob 2 x Yamaha VX cruiser Jet Skis

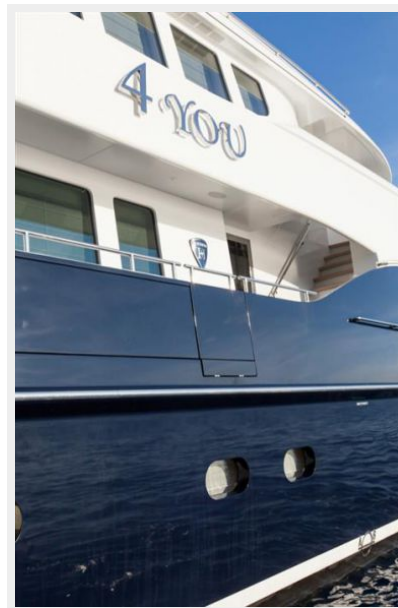
Исключения

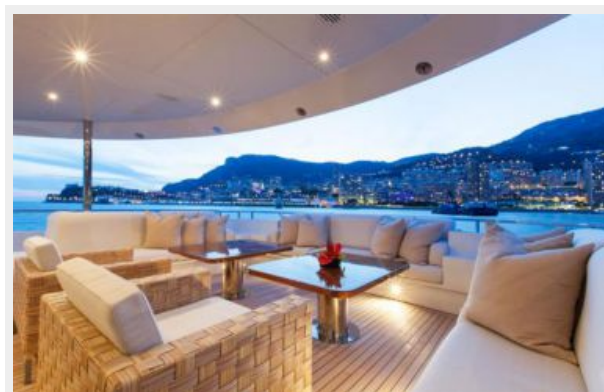
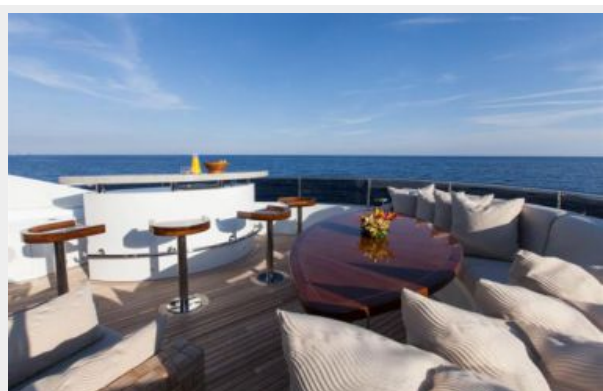
При продаже яхты исключаются личные вещи владельца.

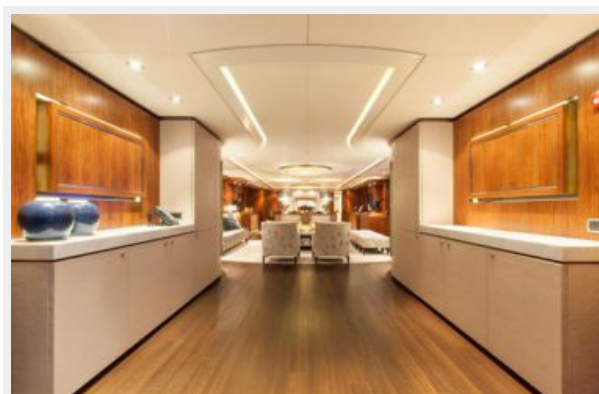
Отказ от ответственности

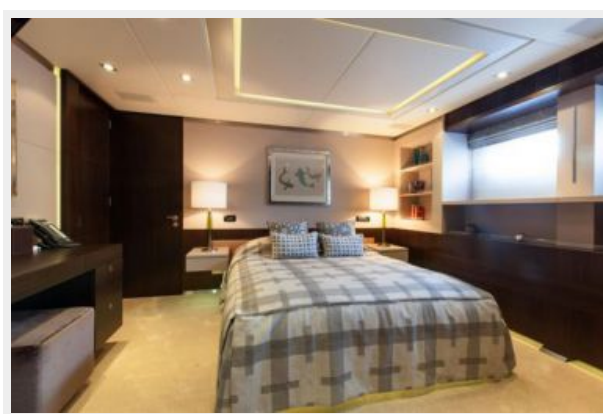
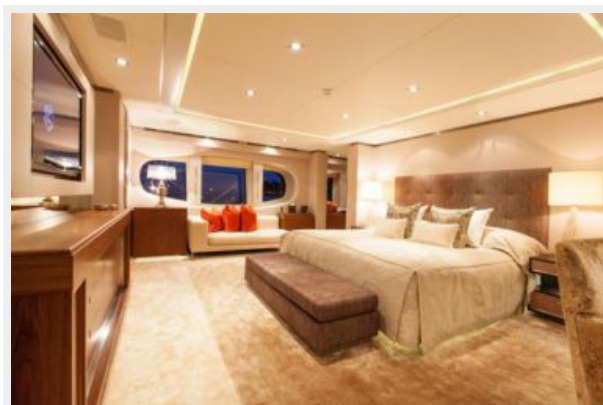
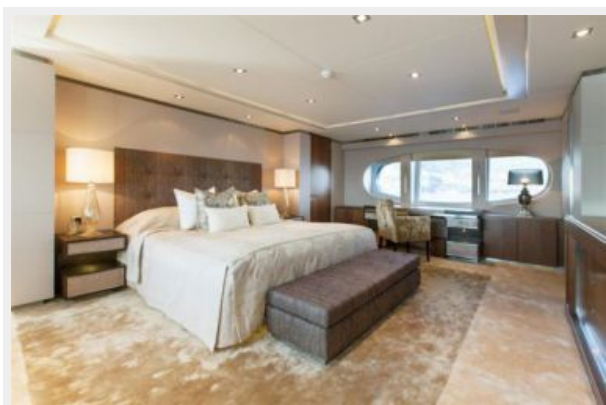
Компания предоставляет описание судна или яхты добросовестно, но не может гарантировать точность этой информации, а также не ручается за техническое состояние. Покупатель должен проинструктировать своих агентов или оценщиков исследовать представленную информацию более подробно, по собственному желанию. Продажа судна или яхты, изменение цены или снятие с продажи будет происходить без предварительного уведомления.

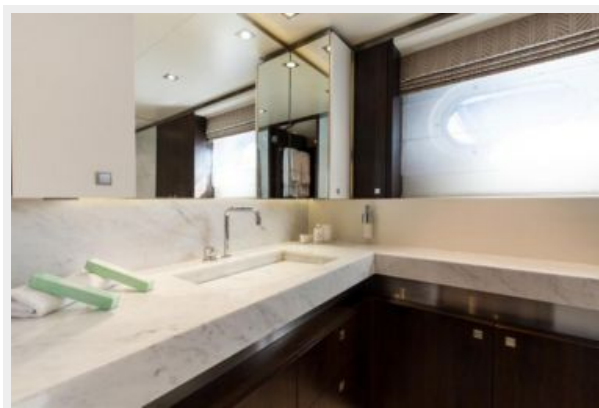
ФОТОГРАФИИ

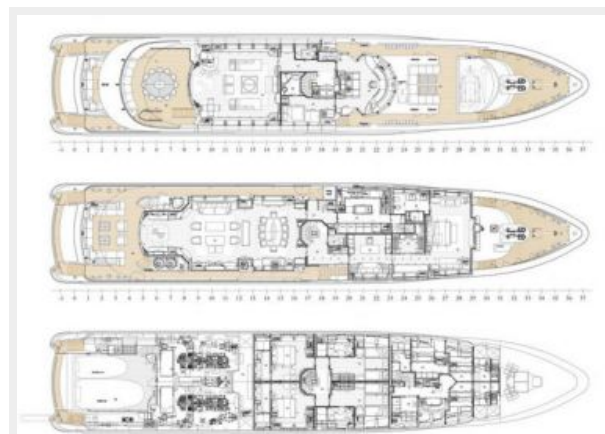
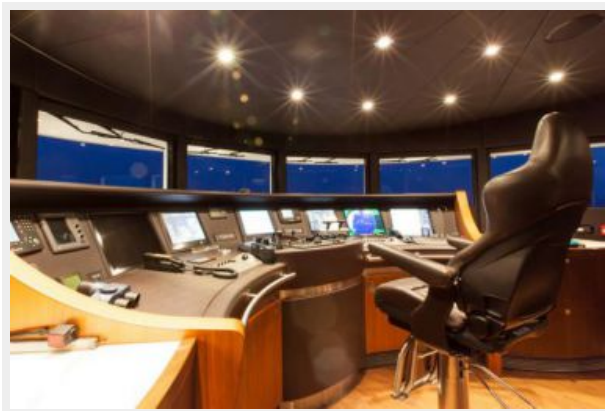












КОНТАКТЫ

Андрей Шестаков (Andrey Shestakov) – ведущий яхтенный брокер отдела продаж яхт и судов компании Shestakov Yacht Sales Inc. Официальный представитель Shestakov Yacht Sales Inc. для русскоговорящих клиентов в центральном офисе компании в Майами/Форт Лодердейл/Флорида/США.

Контактная информация

Email: andrey@shestakovyachtsales.com

Web: shestakovyachtsales.com

Телефоны

Краснодарский край: **+7(918)465-66-44**

США, Майами, Флорида: **+1(954)274-4435**

Время работы

Понедельник – Суббота: **9:00 - 21:00**
EDT

Воскресенье: **Закрито**

Адрес



Harbour Towne Marina, 850 NE 3rd St,
STE 213, Dania, FL 33004