

CAFFEINE — SUNSEEKER



Builder: SUNSEEKER

Year Built: 2008

Model: Motor Yacht

Price: PRICE ON APPLICATION

Location: United States

LOA: 62' 4" (19.00m)

Beam: 16' 5" (5.00m)

Max Draft: 5' 0" (1.52m)

Cruise Speed: 28 Kts. (32 MPH)

Max Speed: 35 Kts. (40 MPH)

Our experienced yacht broker, Andrey Shestakov, will help you choose and buy a yacht that best suits your needs **CAFFEINE — SUNSEEKER** from our catalogue. Presently, at Shestakov Yacht Sales Inc., we have a wide variety of yachts available on our sale's list. We also work in close contact with all the big yacht manufacturers from all over the world.

If you would like to buy a yacht **CAFFEINE — SUNSEEKER** or would like help answering any questions concerning purchasing, selling or chartering a yacht, please call **+1(954)274-4435**

TABLE OF CONTENTS

TABLE OF CONTENTS	2
SPECIFICATIONS	4
Overview	4
Basic Information	4
Dimensions	4
Speed, Capacities and Weight	4
Accommodations	4
Hull and Deck Information	5
Engine Information	5
DETAILED INFORMATION	6
US Specification Included	6
Construction	6
Swim Platform	6
Main Deck Salon	6
Helm Console/ Electronics	7
Galley	7
Lower Salon	8
Master Stateroom	8
VIP Stateroom	8
Starboard Guest Stateroom	9
Electrical / Hydraulic/ General Systems	9
Underwater Gear	9
Certifications	10
Exclusions	10
Disclaimer	10
Exclusions	10
Disclaimer	10
PHOTOS	11

CONTACTS	16
Contact details	16
Telephones	16
Office hours	16
Address	16

SPECIFICATIONS

Overview

Owners are moving up. They have spared no expense in making this one of the nicest 62 Predators currently on the market. Upgraded Air Conditioner throughout the vessel, new & custom exterior seating & upholsteries, LED lighting throughout, commercial ice maker, Bow & Stern Thruster w/ Yacht Controller in dash Joystick & wireless remote, engines services are current and up-to-date. This 62 Predator is loaded and ready for a new owner.

Basic Information

Category: Motor Yacht

Model Year: 2008

Year Built: 2008

Country: United States

Dimensions

LOA: 62' 4" (19.00m)

Beam: 16' 5" (5.00m)

Max Draft: 5' 0" (1.52m)

Speed, Capacities and Weight

Cruise Speed: 28 Kts. (32 MPH)

Max Speed: 35 Kts. (40 MPH)

Displacement: 63800 Pounds

Water Capacity: 185 Gallons

Fuel Capacity: 782 Gallons

Accommodations

Total Cabins: 3

Total Heads: 3

Hull and Deck Information

Hull Material: Fiberglass

Engine Information

Engines: 2

Manufacturer: MAN

Model: TURBO

Engine Type: Inboard

Fuel Type: Diesel

DETAILED INFORMATION

US Specification Included

- Air conditioning
- Upgraded generator
- US Coast Guard build regulations
- US specification appliances

Construction

- Hand-laid GRP
- Gel coat including stripes
- Vinylester skin coat w/powderbound mat
- Stitched multi-axial reinforced single skin bottom
- Balsa cored hull topsides
- PVC foam cored deck and superstructure
- Hull stiffened w/longitudinal stringers supported by transverse bulkheads and floors

Swim Platform

- Teak-laid swim platform and steps
- Hot & cold transom shower
- Fresh water marine connection
- Dockside AC shore power connection
- SS swim ladder
- Hydraulic lifting platform
- UPGRADE: Aqualuma underwater lights

Main Deck Salon

- Large dining settee w/folding table
- Under settee storage
- Storage cabinets
- SS sliding door to cockpit
- AC/DC control panels
- Generator controls
- Scatter cushions
- UPGRADE: New Air Cond. Installed 2 units @ 18,000 BTU each

- UPGRADE: Hardwood Flooring
- UPGRADE: Hi-Lo TV system built into furniture
- UPGRADE: Samsung 60" LED TV
- UPGRADE: BOSE surround sound
- UPGRADE: LED Lighting

Helm Console/ Electronics

- VHF radio – Simrad RS 82
- Autopilot – Raymarine
- Besenzoni electric helm seat
- Bow Thruster controls
- Stern Thruster controls
- Electric remote searchlight
- Double stand/sit helm and co-pilot seats w/storage below
- Hydraulic power steering
- Leather wrapped steering wheel
- Full analog engine instrumentation
- Rudder indicator
- Water tank gauge
- Fuel tank gauge
- Trim tab controls
- Single lever engine controls
- Windscreen wipers & washers
- UPGRADE: YachtController Joystick Docking System at Helm
- UPGRADED: Wireless YachtController Docking Remote
- UPGRADE: (2) Garmin Map 7215 Touchscreen GPS, Radar, Sounder
- UPGRADE: Garmin Sounder
- UPGRADE: Garmin Radar Dome
- UPGRADE: (2) Aft facing cameras interfaced with Garmins
- UPGRADE: Carbon Fiber Dash Panel

Galley

- Large S.S. Bowl Sink
- 3 Burner electric cooktop
- Sub Zero Upright Full Size Refrigerator / freezer
- Microwave / Convection Oven
- Abundant Cabinet and drawer storage
- UPGRADE: Commercial Icemaker
- UPGRADE: LED Lighting

Lower Salon

- Dining settee w/table and convertible bed inserts
- Overhead cabinet storage
- Hand-held fire extinguisher
- Opening portholes w/screens and curtains
- Scatter cushions
- UPGRADE: Hardwood Floors
- UPGRADE: Splendid Washer/ Dryer located near Master Entrance
- UPGRADE: LED Lighting

Master Stateroom

- Double berth
- Cabinet and drawer storage
- Nightstands
- Walk in closet
- Outboard shelving
- 2 x Large opening portholes w/screens & curtains
- 4 x fixed portholes w/curtains
- Fitted carpet
- En Suite head w/shower
- UPGRADE: Air Cond. System upgraded to 16,000 BTU
- UPGRADE: New Upholstery / Bedding
- UPGRADE: Sony flat panel TV system w/ DVD player
- UPGRADE: BOSE surround system
- UPGRADE: LED Lighting

VIP Stateroom

- Double berth w/storage below
- Drawer in base end of berth
- Overhead bedside cupboards
- Outboard shelving
- Hanging locker w/mirrored door
- Opening deck hatch with screen
- Fitted carpeting
- En Suite head w/shower
- UPGRADE: New Upholstery / Bedding
- UPGRADE: Flat panel TV system
- UPGRADE: LED Lighting

Starboard Guest Stateroom

- Double Pullman style bunks
- Hanging locker w/ mirrored door
- Drawer storage under lower Pullman
- Shared head w/ shower
- UPGRADE: New Upholstery / Bedding
- UPGRADE: Flat Panel TV System
- UPGRADE: LED Lighting

Electrical / Hydraulic/ General Systems

- Slow speed generator w/underwater silent exhaust and sound shield
- 24v and 12v DC electrical system w/full circuit breaker protection
- 6 x 24v circuit engine batteries
- 4 x 24v circuit house batteries
- 2 x 12v circuit generator batteries
- 24v Battery charger
- 12v Battery charger
- Water heater
- AC sockets throughout boat
- 24v Hand light and cable
- Aluminum fresh water tank w/electric sending unit
- 24v Fresh water pressure system
- Hydraulic power steering engine driven pump
- 24v Hydraulic power pack for trim tabs and platform
- Glendenning Cable Master
- UPGRADE: Cockpit winches
- UPGRADE: Custom Radar mast
- UPGRADE: Bow Thruster
- UPGRADE: Stern Thruster
- UPGRADE: Water maker – Onshore Labs w/ remote in galley
- UPGRADE: KVH SAT TV
- UPGRADE: EPIRB

Underwater Gear

- Direct shaft drive through half tunnels
- 4-Blade NAB bronze propellers
- Bronze P-brackets
- Dripless shaft logs
- Hi-Performance bronze rudders and struts

- Seawater strainers-2 x main engines; 1 x generator
- Seacocks on all underwater fittings
- Full cathodic bonding system to zinc anodes
- SS hydraulic trim tabs 24v
- UPGRADE: Spare propeller set

Certifications

As-is

Exclusions

- Owner's Personal Effects

Disclaimer

The Company offers the details of this vessel in good faith but cannot guarantee or warrant the accuracy of this information nor warrant the condition of the vessel. A buyer should instruct his agents, or his surveyors, to investigate such details as the buyer desires validated. This vessel is offered subject to prior sale, price change, or withdrawal without notice

Exclusions

Owner's personal belongings.

Disclaimer

The Company offers the details of this vessel or yacht in good faith but cannot guarantee or warrant the accuracy of this information nor warrant the condition of the vessel. A buyer should instruct his representatives, agents, or his surveyors, to investigate such details as the buyer desires validated. This vessel or yacht is offered subject to prior sale, price change, or withdrawal without notice.

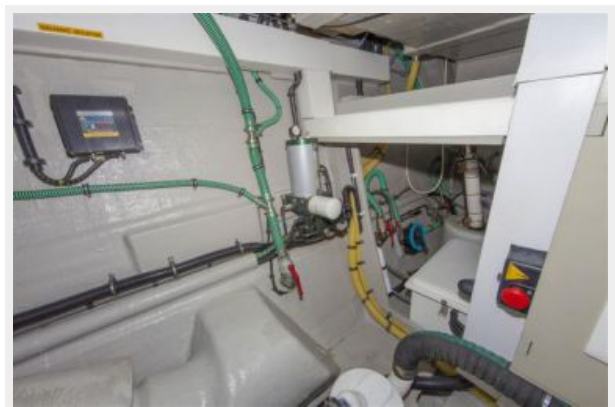
PHOTOS











CONTACTS

Andrey Shestakov, leading yacht broker of the sales department of Shestakov Yacht Sales Inc. Shestakov Yacht Sales Inc., the official representative of the Miami/Fort Lauderdale FL headquarters.

Contact details

Email: andrey@shestakovyachtsales.com

Web: shestakovyachtsales.com/en/

Telephones

USA: +1(954)274-4435

Office hours

Monday – Saturday: **9:00 - 21:00** EDT

Sunday: **closed**

Address



Harbour Towne Marina, 850 NE 3rd St,
STE 213, Dania, FL 33004