

## TRANQUILITY — FLEMING YACHTS



**Builder:** FLEMING YACHTS

**Year Built:** 2005

**Model:** Cruiser

**Price:** PRICE ON APPLICATION

**Location:** United States

**LOA:** 55' 0" (16.76m)

**Beam:** 16' 0" (4.88m)

**Min Draft:** 5' 0" (1.52m)

**Cruise Speed:** 17 Kts. (20 MPH)

**Max Speed:** 21 Kts. (24 MPH)

Our experienced yacht broker, Andrey Shestakov, will help you choose and buy a yacht that best suits your needs **Tranquility — FLEMING YACHTS** from our catalogue. Presently, at Shestakov Yacht Sales Inc., we have a wide variety of yachts available on our sale's list. We also work in close contact with all the big yacht manufacturers from all over the world.

If you would like to buy a yacht **Tranquility — FLEMING YACHTS** or would like help answering any questions concerning purchasing, selling or chartering a yacht, please call **+1(954)274-4435**

# TABLE OF CONTENTS

---

TABLE OF CONTENTS	2
SPECIFICATIONS	5
Overview	5
Basic Information	5
Dimensions	5
Speed, Capacities and Weight	5
Accommodations	5
Hull and Deck Information	6
Engine Information	6
DETAILED INFORMATION	7
Special Features & Highlights	7
Cockpit & Salon	8
Galley	8
Pilothouse & Electronics	8
Flying Bridge Features	9
Disclaimer	10
Exclusions	10
Disclaimer	10
PHOTOS	11
55 Fleming, Pilothouse Dinette; Stairway to Bridge	11
55 Fleming, Warm and Inviting Salon	11
55 Fleming, Port Side Protected Walkway	11
55 Fleming, Master Stateroom	11
55 Fleming, Stbd Side Looking Forward	12
55 Fleming, Port Side Looking Forward	12
55 Fleming, Anchor Pulpit and Windlass	12
55 Fleming, Looking Aft	12
55 Fleming, Teak Cockpit; has Cockpit Sunshade	12

55 Fleming, Cockpit Control Station	12
55 Fleming, Ice Maker and Refreshment Station	13
55 Fleming, FCI Watermaker	13
55 Fleming, Entertainment Center	13
55 Fleming, Galley	13
55 Fleming, Full Size GE Refrigerator/Freezer w/ In Door Ice & Water Dispenser	14
55 Fleming, Galley; note the Dishwasher	14
55 Fleming, Fully Loaded Pilothouse	14
55 Fleming, Pilothouse Control Station	14
55 Fleming, Stidd Helm Seat, Navigator's Stool, Port Side Door	14
55 Fleming, Raised Dinette in Pilothouse	14
55 Fleming, Guest Cabin w/ 2 Bunks	15
55 Fleming, Stbd Side Door	15
55 Fleming, Guest Cabin 1 w/ Double bed & Bunk Above	15
55 Fleming, Guest Head (Marble Countertop)	15
55 Fleming, Master Head w/ Marble Countertop and XL Shower	16
55 Fleming, Guest Head w/ Full Shower	16
55 Fleming, Stbd Side Storage in Master State Room	16
55 Fleming, Beautiful Master Stateroom	16
55 Fleming, Washer & Dryer	17
55 Fleming, Port View Master Stateroom	17
55 Fleming, 17kw Genset	17
55 Fleming, 9kw Genset	17
55 Fleming, QSC 8.3 Cummins, rear of Stbd Engine	17
55 Fleming, QSC 8.3 Cummins, Rear of Port Engine	17
55 Fleming, QSC 8.3 Cummins, Front of Port Engine	18
55 Fleming, QSC 8.3 Cummins, Front of Stbd Engine	18
55 Fleming, Fuel Switching; Racor Filters	18
55 Fleming, Engine Room Looking Forward	18

---

55 Fleming, All covers on	18
55 Fleming, Flybridge Helm Station	18
55 Fleming, Beautiful Bridge Deck	19
55 Fleming, Hardtop & Rear Facing Camera	19
55 Fleming, Hardtop & Antennas	19
55 Fleming, Stbd Stern at the Dock	19
55 Fleming, Stbd Bow 'On the Hook,' Crane Extended	19
<b>CONTACTS</b>	<b>20</b>
Contact details	20
Telephones	20
Office hours	20
Address	20

---

# SPECIFICATIONS

---

## Overview

---

Fresh to the market, "Tranquility" offers everything that you would expect from a Fleming, plus twin Common Rail QSC 500hp Cummins diesels with Electronic Controls, two gensets, watermaker, FlyBridge hardtop, Upgraded Naiad Stabilizers, Upgraded Davit, non-skid foredeck (not teak), stainless handrail for the bow rail (not teak), Bow & Stern Thruster, Underwater lights, Sat TV and Sat stereo, on-board Fuel Polishing system, dual Fresh water pumps with shift on the fly capability. She was just hauled and bottom painted and hull just waxed.

## Basic Information

---

**Category:** Cruiser

**Model Year:** 2005

**Year Built:** 2005

**Country:** United States

## Dimensions

---

**LOA:** 55' 0" (16.76m)

**Beam:** 16' 0" (4.88m)

**Min Draft:** 5' 0" (1.52m)

## Speed, Capacities and Weight

---

**Cruise Speed:** 17 Kts. (20 MPH)

**Max Speed:** 21 Kts. (24 MPH)

**Displacement:** 66000 Pounds

**Water Capacity:** 300 Gallons

**Fuel Capacity:** 1000 Gallons

## Accommodations

---

**Total Cabins:** 3

**Total Heads:** 2

---

## Hull and Deck Information

---

**Hull Material:** Fiberglass

## Engine Information

---

**Engines:** 2

**Manufacturer:** Cummins

**Model:** QSC8.3 490HO

**Engine Type:** Inboard

**Fuel Type:** Diesel

---

# DETAILED INFORMATION

---

## Special Features & Highlights

---

- Twin Cummins QSC 8.3 common rail diesels with Glendinning electronic controls
- She has a complete "back-up" set of electronic controls
- Cockpit control station with steering, shift/throttle, bow/stern thruster
- Removable cockpit bimini sunshade
- Teak cockpit and covered side walks
- Portuguese Bow with fiberglass non-skid foredeck (not teak, easy care)
- Stainless steel bow railing with SS handrail (not teak, easy care)
- Bow pulpit with anchor windlass, fresh and raw water washdown at the bow
- Fiberglass Hardtop for Flying Bridge
- Upgraded Naiad Stabilizers
- Upgraded Electric Davit with remote
- FCI Watermaker
- On Board Fuel Polishing system
- (2) Onan Generators, 17kw and 9 kw, both with sound shields (Both generator batteries are new in '14)
- Trace, DC to AC Inverter
- Bow and Stern Thruster
- Underwater lights
- (2) complete Navigation systems (PC Based Nav Tech/Max Sea system), and Furuno Nav Net VX2 system
- Tremendously Well Equipped pilothouse (AIS, Radar, Autopilot, TV, 3 different cameras that feed to helm station, 2 VHF's, plus much more)
- 6 man Switlik Liferaft with Hydro-static release (within cert)
- Salon Wet Bar with ice maker, conveniently located to Cockpit
- Full Sized GE Profile side-by-side Ref/Freezer with Ice/Water in the door
- (2) fresh water pumps, with shift on the fly capability
- Washer and Dryer, Dish Washer, Dumbwaiter (from the Galley to the Bridge)
- Interior staircase from the pilothouse to the Bridge, ladder from the cockpit
- She has a separate 12v Battery system for the Flybridge electronics (in case of emergency)
- Both toilets can be flushed with either fresh water, or raw water
- Tremendous Entertainment system with Sat TV, Sat Phone, HDTV's, Sat Stereo with RUSSsound speaker selector system
- Awesome salon with wood blinds, Hunter Douglas silhouette blind for Salon/cockpit door, plus a sliding screen
- 3 staterooms, the master Suite will make your jaw drop!
- 18 kt Cruise Speed, 22 kt top speed
- 10 kt Econ Cruise at 1500 rpm at 10 GPH= 1 nmpg

---

## Cockpit & Salon

---

Full beam fiberglass swim platform, with a centerline transom door, cablemaster for easy handling of shore power cords. Teak cockpit floor, there is a removable cockpit sunshade, large hatches for easy access to aft bilges and lazarette storage compartments, plus cockpit access to the engine room. Cockpit helm station is concealed within the stbd forward cabinet. Additional storage within the port forward cabinet. Covered side walks are Safe, Wide, with ample hand holds moving forward. Up three steps to the Portuguese bow, this and the foredeck are fiberglass non-skid for easy care and maintenance. Side boarding gates for easy on/off from finger piers.

The centerline Salon doors swing open to reveal a Beautifully crafted interior, rich with Teak Cabinetry, wonderful soft goods and rich textures. The teak and holly floor is covered by a tan colored and edge-bound Berber carpet. Teak wood blinds for the large salon windows. Samsung HDTV on an electric riser, 2 DirecTV receivers (one with DVR), Alpine AM/FM/CD/XM stereo, Samsung Blue Ray disk player, RUSSound speaker selector, allows for speaker selection throughout the vessel (very nicely done).

Teak Hi/Low table with 2 fold out leafs. Uline Ice Maker and Beverage center, conveniently located near the cockpit door. Stbd side teak cabinets offer excellent storage opportunities. Hunter Douglas silhouette blind for the Salon door, also has a sliding screen door.

---

## Galley

---

At the forward end of the salon deck is the wonderfully appointed Galley. There is a Full Size GE Profile side by side Refrigerator/Freezer with Ice and Water in the door. Overhead cabinets for storage and a Dumbwaiter for passing food and drinks up to the Bridge. Including:

- A Meile undercounter dishwasher
- Double Bowl undercounter sink with Combination Faucet
- Sharp Carousel Convection/Microwave oven
- Kenyon 3 burner stove
- Full size GE Profile side-by-side refrigerator with Ice/Water in the door
- Excellent storage and counter space
- Excellent natural light and ventilation
- Beautiful, Rich teak cabinetry and teak/Holly sole
- U-Line Ice maker at the aft of the Salon, adjacent to the Cockpit

---

## Pilothouse & Electronics

---

The pilothouse is "Loaded" with electronics, and features Comfort and Command uncommon in todays vessels. Port and Stbd side watertight wing doors for quick access to both side rails. Direct access to the Flying Bridge by way on an interior staircase. There is a Pilothouse Dinette with teak table and settee. This table and seating is raised so that it offers stunning views for your



passengers while underway. The Stidd Helm chair offers a polished stainless pedestal with folding stainless footrest. The electronics are located across the upper radio box space and flush mounted in the dash.

### Pilothouse Lower Dash Panel

- (2) Cummins Smart Craft engine monitoring gauges
- Glendinning Electronic Engine Controls (3 stations) with a full separate set of emergency Electronic Controls
- Furuno NavNet vx2 Cmap NT Max color monitor
- NEC MultiSync LCD 1980 sx monitor for PC Based Navigation software system
- Furuno GP37 dgps WAAS Navigator
- Furuno FA 150 Universal AIS
- Simrad AP26 autopilot
- (3) B & G Network display screens (network depth, network wind speed/direction, network depth)
- Furuno 12 inch Radar screen
- Ritchie Powerdamp compass
- Sharp 13 inch HDTV Monitor for watching TV in the Pilothouse
- ACR Remote spotlight
- Bennett Trim Tabs with position indicators

### Pilothouse Overhead Radio Panel

- Trace Inverter control panel
- (2) Icom M602 VHF Radios
- Furuno RD30
- RUSSound speaker selector
- SONY camera monitor (camera locations: Engine room, Aft Deck, Rear of Radar Mast)
- Naiad Anti Roll Stabilizer control panel
- FCI Watermaker control panel

## Flying Bridge Features

---

There are two ways to access the Flying Bridge deck -- ladder from the cockpit and interior staircase from the Pilothouse. A fiberglass hardtop covers the upper helm station and most of the seating. There is a large teak table at the U-shaped seating area, double wide helm seat with folding footrest, Dumbwaiter that comes up directly from the Galley, port side settee aft of the helm seat (storage beneath).

### Flybridge Electronics and Additional Items

- Glendinning Electronic Controls
- Cummins Smart Craft engine monitor gauges
- Furuno NavNet vx2

- NEC PC Nav system monitor
- Simrad AP26 Autopilot
- Icom M502 VHF Radio
- ACR remote spotlight control panel
- RUSSound speaker selector
- Rudder position indicator
- Bow & Stern Thruster controls
- Compass
- Steelhead Marine 1000 lb capacity davit with remote
- Switlik 6 man liferaft with Hydrostatic Release
- Wonderful seating with removable cushions and full canvas covers for everything

---

## Disclaimer

---

While we attempt to display current and accurate data, this listing may not reflect the most recent transactions or may contain occasional data entry errors. Selling agent makes no warranties, express or implied, regarding the content or availability of the products described herein. All inventory listed is subject to availability and prior sale. Please consult selling agent for details. Prices are quoted for the USA only and may not include transportation, taxes, or other applicable charges. Photographs may be representative only and may vary somewhat from the actual items offered for sale. We will not be responsible for inaccurate data obtained from our site. Please check with your local dealer to ensure that you have the latest information available. Information on this web site could include technical inaccuracies or typographical errors. Changes may be periodically made to the information or the products herein. Questions or comments regarding these policies may be directed to website hosting agent.

---

## Exclusions

---

Owner's personal belongings.

---

## Disclaimer

---

The Company offers the details of this vessel or yacht in good faith but cannot guarantee or warrant the accuracy of this information nor warrant the condition of the vessel. A buyer should instruct his representatives, agents, or his surveyors, to investigate such details as the buyer desires validated. This vessel or yacht is offered subject to prior sale, price change, or withdrawal without notice.

# PHOTOS

**55 Fleming, Warm and Inviting Salon**



**55 Fleming, Pilothouse Dinette; Stairway to Bridge**



**55 Fleming, Port Side Protected Walkway**



**55 Fleming, Master Stateroom**



**55 Fleming, Stbd Side Looking Forward**



**55 Fleming, Port Side Looking Forward**



**55 Fleming, Anchor Pulpit and Windlass**



**55 Fleming, Looking Aft**



**55 Fleming, Teak Cockpit; has Cockpit Sunshade**



**55 Fleming, Cockpit Control Station**



**55 Fleming, FCI Watermaker**



**55 Fleming, Ice Maker and Refreshment Station**



**55 Fleming, Entertainment Center**



**55 Fleming, Galley**



**55 Fleming, Full Size GE Refrigerator/Freezer w/ In Door Ice & Water Dispenser**

**55 Fleming, Galley; note the Dishwasher**



**55 Fleming, Fully Loaded Pilothouse**



**55 Fleming, Pilothouse Control Station**



**55 Fleming, Raised Dinette in Pilothouse**



**55 Fleming, Stidd Helm Seat, Navigator's Stool, Port Side Door**

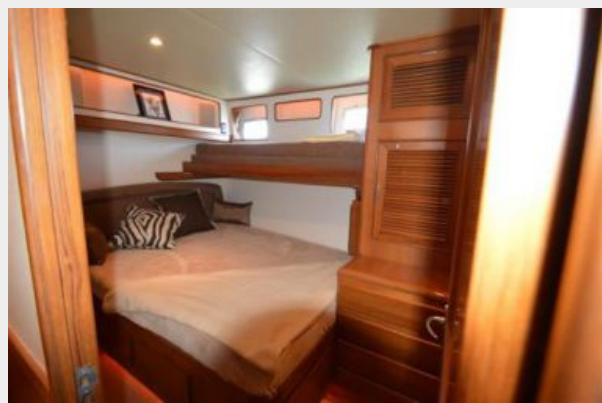


**55 Fleming, Guest Cabin w/ 2 Bunks**

**55 Fleming, Stbd Side Door**



**55 Fleming, Guest Cabin 1 w/ Double bed & Bunk Above**



**55 Fleming, Guest Head (Marble Countertop)**



**55 Fleming, Guest Head w/ Full Shower**



**55 Fleming, Master Head w/ Marble Countertop and XL Shower**



**55 Fleming, Beautiful Master Stateroom**



**55 Fleming, Stbd Side Storage in Master State Room**





**55 Fleming, Washer & Dryer**

**55 Fleming, Port View Master Stateroom**



**55 Fleming, 17kw Genset**



**55 Fleming, 9kw Genset**



**55 Fleming, QSC 8.3 Cummins, rear of Stbd Engine**



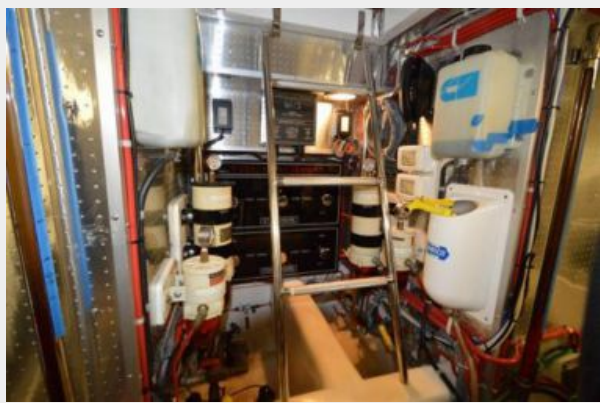
**55 Fleming, QSC 8.3 Cummins, Rear of Port Engine**



**55 Fleming, QSC 8.3 Cummins, Front of Port Engine**      **55 Fleming, QSC 8.3 Cummins, Front of Stbd Engine**



**55 Fleming, Fuel Switching; Racor Filters**



**55 Fleming, Engine Room Looking Forward**



**55 Fleming, All covers on**



**55 Fleming, Flybridge Helm Station**



**55 Fleming, Beautiful Bridge Deck**



**55 Fleming, Hardtop & Rear Facing Camera**



**55 Fleming, Hardtop & Antennas**



**55 Fleming, Stbd Stern at the Dock**



**55 Fleming, Stbd Bow 'On the Hook,' Crane Extended**



# CONTACTS

---

Andrey Shestakov, leading yacht broker of the sales department of Shestakov Yacht Sales Inc. Shestakov Yacht Sales Inc., the official representative of the Miami/Fort Lauderdale FL headquarters.

## Contact details

---

Email: [andrey@shestakovyachtsales.com](mailto:andrey@shestakovyachtsales.com)

Web: [shestakovyachtsales.com/en/](http://shestakovyachtsales.com/en/)

## Telephones

---

USA: +1(954)274-4435

## Office hours

---

Monday – Saturday: **9:00 - 21:00** EDT

Sunday: **closed**

## Address

---



Harbour Towne Marina, 850 NE 3rd St,  
STE 213, Dania, FL 33004