

2015 RAMPAGE — RAMPAGE



Builder: RAMPAGE

Year Built: 2015

Model: Sport Fisherman

Price: PRICE ON APPLICATION

Location: United States

LOA: 41' 0" (12.50m)

Beam: 16' 0" (4.88m)

Max Draft: 4' 0" (1.22m)

Our experienced yacht broker, Andrey Shestakov, will help you choose and buy a yacht that best suits your needs **2015 Rampage — RAMPAGE** from our catalogue. Presently, at Shestakov Yacht Sales Inc., we have a wide variety of yachts available on our sale's list. We also work in close contact with all the big yacht manufacturers from all over the world.

If you would like to buy a yacht **2015 Rampage — RAMPAGE** or would like help answering any questions concerning purchasing, selling or chartering a yacht, please call **+1(954)274-4435**

TABLE OF CONTENTS

TABLE OF CONTENTS	2
SPECIFICATIONS	5
Basic Information	5
Dimensions	5
Speed, Capacities and Weight	5
Accommodations	5
Hull and Deck Information	5
Engine Information	5
DETAILED INFORMATION	6
Vessel Walkthrough	6
Salon and Galley	6
Master Stateroom	6
Head	7
Aft Stateroom	7
Helm	7
Electronics	8
Hull and Deck	8
Cockpit	9
Engine Room/Mechanical	9
Palm Beach Tower and Molded Hardtop	9
Exclusions	10
Disclaimer	10
PHOTOS	11
Profile	11
Master Stateroom	11
Salon	11
Galley	11
Cockpit mezzanine seating	11

Master Stateroom	11
Port Hanging Locker Open	12
Salon and Galley	12
Salon Entrance	12
Salon and Stateroom Entrances	12
Galley	12
Refrigerator/Freezer	12
Galley Sink	13
Galley Stovetop	13
Electric Panel	13
Head	13
Aft Stateroom	14
Aft Stateroom Pullman Berth Down	14
Aft Stateroom Pullman Berth Up	14
Helm	14
Helm Area	14
Port Helm Seating	14
Rod Storage in Hardtop	15
Rod Storage in Hardtop	15
Drinkbox	15
Storage under Mezzanine	15
Transom Livewell	15
Fishbox	15
Tower Helm	16
Raymarine Radar	16
Engine Room Lift Access	16
Engine Room Lift Access	16
Engine Room	16
Starboard Engine	16

Helm Area	17
Helm Area	17
Helm Area	17
Helm Area	17
Cockpit and Mezzanine	17
Livewell	17
Palm Beach Tower	18
Teaser Reel Compartment	18
Tower to Bow View	18
Tower Helm	18
Tower Electronics	18
Tower Helm	18
Foredeck	19
CONTACTS	21
Contact details	21
Telephones	21
Office hours	21
Address	21

SPECIFICATIONS

Basic Information

Category: Sport Fisherman

Model Year: 2015

Year Built: 2015

Country: United States

Dimensions

LOA: 41' 0" (12.50m)

Beam: 16' 0" (4.88m)

Max Draft: 4' 0" (1.22m)

Speed, Capacities and Weight

Water Capacity: 100 Gallons

Holding Tank: 53 Gallons

Fuel Capacity: 700 Gallons

Accommodations

Total Cabins: 2

Total Heads: 1

Hull and Deck Information

Hull Material: Fiberglass

Engine Information

Engines: 2

Manufacturer: Caterpillar

Model: C12

Engine Type: Inboard

Fuel Type: Diesel

DETAILED INFORMATION

Vessel Walkthrough

The 100+ sq. ft cockpit is exceptionally equipped with an enormous livewell, mezzanine seating, and large in-deck fish boxes. Inside of the large air conditioned helm area there is plenty of seating with three helm chairs and bench seating to port and starboard. This creates a pleasurable area to cruise with family and friends who can all be part of the good times in one area of communication. The center lined helm is well laid out and ideal for functionality and use. Going down the stairs you enter the cabin and find the spacious 6'7" headroom and two stateroom layout. To port is the aft stateroom with two bunks, one of which is Pullman style. To starboard is a spacious head with separate shower stall. Forward is the master stateroom with a privacy bulkhead and double doors. The galley and salon common area combine style and functionality with a comfortable feel. Call for your showing today, as this is a opportunity you will not want to miss.

Salon and Galley

- Interior: Walnut wood and Shitake interior seating
- Amtico Walnut flooring with carpet cover
- Air conditioner and heater 240V
- Removable table
- L-shaped seating to port with storage underneath
- Vinyl headliner
- Home theatre system with TV
- Two-burner ceramic cooktop
- Contoure convection microwave oven
- Refrigerator and freezer drawers
- Stainless steel sink
- Central vacuum
- Overhead hatches
- Cabinet and drawer storage
- Mirror over salon seating

Master Stateroom

- Centerline island queen berth with storage beneath
- Privacy doors
- Comforter, pillows, and shams
- TV 15" LCD and DVD player
- Two cedar-lined hanging lockers to port and starboard

- Overhead hatch
- Reading lights
- Cabinet storage
- Carpet cover over walnut sole

Head

- Vanity with storage cabinet
- Framed mirror
- Ventilation fan
- Enclosed shower stall
- Molded fiberglass sole, walls, and ceiling
- Cabinet storage
- Dometic head system

Aft Stateroom

- Upper and lower berths
- Upper berth Pullman style
- Storage under bottom berth
- Hanging locker
- Electrical panel
- Storage drawer
- Stereo control
- Reading lights

Helm

- Molded fiberglass helm deck with dual hydraulic rams lift to engine room
- Raymarine G Series Electronics Package
- Air conditioning
- Accessories switch panel
- Modified L-shaped seating on port and starboard side
- Hydraulic steering system with tilt wheel
- Edson stainless steering wheel with control knob
- ZF electronic controls with engine synchronizer
- Bow thruster control
- Compass
- Tilt out helm pod for easy access to wiring and electronics
- Three Pompanette helm chairs
- Stereo remote Control

- Sony marine speakers
- Sliding door for cabin entry
- Storage under starboard seating
- Freezer under port seating
- Helm sole carpet cover
- Custom tackle drawer storage
- Three windshield wipers
- Day hatch quick engine room access

Electronics

- Raymarine G Series Electronics Package
- Digital engine displays
- Two gS 165 15.4" Glass Bridge Multifunction Displays
- RS130 GPS Receiver
- CAM100 Day/Night Camera
- Gen2 Satellite TV System
- CP100 Sonar DownVision Module
- B260 Bronze Thru-Hull Transducer
- 4KW 48' Super HD Digital Open Array Radar
- EV-400 Evolution Power Pilot Auto-Pilot
- Ray218 VHF Radio
- Tower Electronics:
 - Two a75 7" Multifunction Display with Wi-Fi and Lighthouse Charts-NOAA Vector
 - Ray218 VHF Radio

Hull and Deck

- Bow thruster
- Hull design features Carolina flare and prop pockets
- Anti-fouling bottom coating including epoxy primer, sealer, and ablative top coat
- Five year transferable structural warranty
- Bronze underwater through-hull fittings
- Painted boot stripe
- Custom aluminum bow rail
- Heavy duty rub rail with stainless steel insert
- Double-stringer bulkhead construction
- Polished stainless steel anchor roller assembly
- Fortress anchor with line and chain
- Quick windless with up/down deck switches
- Three deck hatches
- Veem prop upgrade

Cockpit

- 100 + sq. ft. usable cockpit space
- Sony marine speakers
- 65 gallon transom livewell
- Switch panel
- Glendinning cable master automatic shore cable retractor
- Cockpit step box
- 1/2" reinforcing plate for mounting fighting chair
- Two in-deck fish boxes with macerated drains
- Eight gunnel mounted rod holders
- LED courtesy lighting
- Removable bolster cushions
- Self bailing and large scuppers
- Transom door and lift gate
- Fresh and raw water wash-down
- Step box storage tub
- Mezzanine seating port and starboard
- Tower leg and overhead rod holders
- Gunnel hawse pipes and cleats

Engine Room/Mechanical

- Two CAT C12 715hp engines
- Onan generator 11.5kw with sound shield
- Excellent accessibility to outboard and inboard sides of engines
- Heavy duty 12v deep cycle batteries
- Battery switches
- Gel coat finished engine room
- Macerator pump out w/overboard discharge
- Engine displays
- Oil change system
- Four 12 volt automatic and manual bilge pumps
- Fireboy fire suppression system
- Phase Three three stage smart charger
- Sound insulation
- Recessed hydraulic Bennett trim tabs
- Retractable 50 amp shore power cord

Palm Beach Tower and Molded Hardtop

- Six recessed lights

- Radar pod express triangular style
- Ten rod holders on tower legs and hardtop
- Recessed teaser reel door with push style bracket
- Molded one piece standing platform
- Two Rupp 31' spreader outriggers
- Rupp aft lay down center rigger
- Electronic controls & steering
- Bench seat with a backrest
- Custom isinglass enclosure
- Dual rod locker storage in hardtop

Exclusions

Owner's personal belongings.

Disclaimer

The Company offers the details of this vessel or yacht in good faith but cannot guarantee or warrant the accuracy of this information nor warrant the condition of the vessel. A buyer should instruct his representatives, agents, or his surveyors, to investigate such details as the buyer desires validated. This vessel or yacht is offered subject to prior sale, price change, or withdrawal without notice.

PHOTOS

Profile



Master Stateroom



Salon



Galley



Cockpit mezzanine seating



Master Stateroom



Port Hanging Locker Open



Salon and Galley



Salon Entrance



Salon and Stateroom Entrances



Galley



Refrigerator/Freezer



Galley Sink



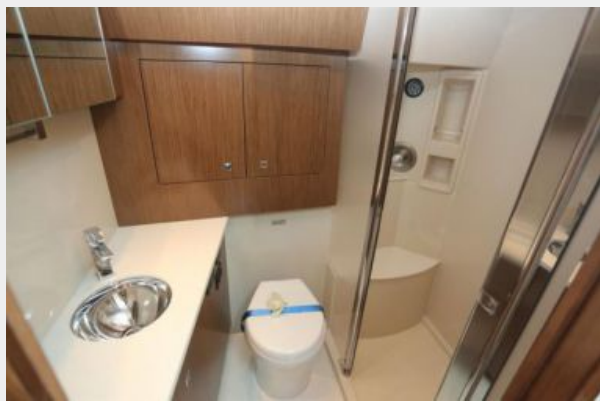
Galley Stovetop



Electric Panel



Head



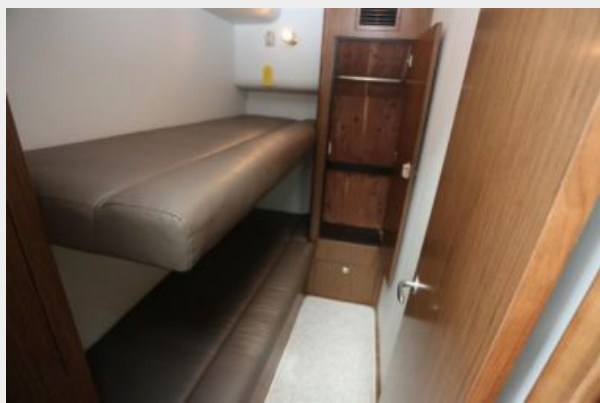
Aft Stateroom



Aft Stateroom Pullman Berth Down



Aft Stateroom Pullman Berth Up



Helm



Helm Area



Port Helm Seating



Rod Storage in Hardtop



Rod Storage in Hardtop



Drinkbox



Storage under Mezzanine



Transom Livewell



Fishbox



Tower Helm



Raymarine Radar



Engine Room Lift Access



Engine Room Lift Access



Engine Room



Starboard Engine



Helm Area



Helm Area



Helm Area



Helm Area



Cockpit and Mezzanine



Livewell



Palm Beach Tower



Teaser Reel Compartment



Tower to Bow View



Tower Helm



Tower Electronics



Tower Helm



Foredeck





CONTACTS

Andrey Shestakov, leading yacht broker of the sales department of Shestakov Yacht Sales Inc. Shestakov Yacht Sales Inc., the official representative of the Miami/Fort Lauderdale FL headquarters.

Contact details

Email: andrey@shestakovyachtsales.com

Web: shestakovyachtsales.com/en/

Telephones

USA: +1(954)274-4435

Office hours

Monday – Saturday: **9:00 - 21:00** EDT

Sunday: **closed**

Address



Harbour Towne Marina, 850 NE 3rd St,
STE 213, Dania, FL 33004