

2015 RAMPAGE — RAMPAGE



Судостроитель: RAMPAGE

Год постройки: 2015

Модель: Катер для спортивной рыбалки

Цена: ЦЕНА ЯХТЫ ПО ЗАПРОСУ

Местонахождение: United States

Длина общая: 41' 0" (12.50m)

Ширина: 16' 0" (4.88m)

Макс. осадка: 4' 0" (1.22m)

Купить 2015 Rampage — RAMPAGE а также выбрать подходящую вам яхту из нашего каталога яхт вам поможет опытный яхтенный брокер Андрей Шестаков. На сегодняшний день компания Shestakov Yacht Sales Inc. имеет большое количество яхт в собственном списке продаж, а также тесно сотрудничает со всеми крупными яхтенными производителями по всему миру.

Для того чтобы купить яхту 2015 Rampage — RAMPAGE а также проконсультироваться по любому вопросу связанному с покупкой, продажей, чартером яхт позвоните по телефону **+7(918)465-66-44**.

ОГЛАВЛЕНИЕ

ОГЛАВЛЕНИЕ	2
ХАРАКТЕРИСТИКИ	5
Основная информация	5
Размеры	5
Скорость, вместимость и масса	5
Размещение	5
Корпус и палуба	5
Информация о двигателе	6
ПОДРОБНОЕ ОПИСАНИЕ	7
Vessel Walkthrough	7
Salon and Galley	7
Master Stateroom	7
Head	8
Aft Stateroom	8
Helm	8
Electronics	9
Hull and Deck	9
Cockpit	10
Engine Room/Mechanical	10
Palm Beach Tower and Molded Hardtop	10
Исключения	11
Отказ от ответственности	11
ФОТОГРАФИИ	12
Profile	12
Master Stateroom	12
Salon	12
Galley	12
Cockpit mezzanine seating	12

Master Stateroom	12
Port Hanging Locker Open	13
Salon and Galley	13
Salon Entrance	13
Salon and Stateroom Entrances	13
Galley	13
Refrigerator/Freezer	13
Galley Sink	14
Galley Stovetop	14
Electric Panel	14
Head	14
Aft Stateroom	15
Aft Stateroom Pullman Berth Down	15
Aft Stateroom Pullman Berth Up	15
Helm	15
Helm Area	15
Port Helm Seating	15
Rod Storage in Hardtop	16
Rod Storage in Hardtop	16
Drinkbox	16
Storage under Mezzanine	16
Transom Livewell	16
Fishbox	16
Tower Helm	17
Raymarine Radar	17
Engine Room Lift Access	17
Engine Room Lift Access	17
Engine Room	17
Starboard Engine	17

Helm Area	18
Helm Area	18
Helm Area	18
Helm Area	18
Cockpit and Mezzanine	18
Livewell	18
Palm Beach Tower	19
Teaser Reel Compartment	19
Tower to Bow View	19
Tower Helm	19
Tower Electronics	19
Tower Helm	19
Foredeck	20
КОНТАКТЫ	22
Контактная информация	22
Телефоны	22
Время работы	22
Адрес	22

ХАРАКТЕРИСТИКИ

Основная информация

Тип судна: Катер для спортивной рыбалки

Модельный год: 2015

Год постройки: 2015

Страна: United States

Размеры

Длина общая: 41' 0" (12.50m)

Ширина: 16' 0" (4.88m)

Макс. осадка: 4' 0" (1.22m)

Скорость, вместимость и масса

Вместимость воды: 100 Gallons

Вместимость сточного бака: 53 Gallons

Объем топливного бака: 700 Gallons

Размещение

Всего кают: 2

Всего ком. состава: 1

Корпус и палуба

Материал корпуса: Fiberglass

Информация о двигателе

Двигатели: 2

Производитель: Caterpillar

Модель: C12

Тип двигателя: Inboard

Тип топлива: Diesel

ПОДРОБНОЕ ОПИСАНИЕ

Vessel Walkthrough

The 100+ sq. ft cockpit is exceptionally equipped with an enormous livewell, mezzanine seating, and large in-deck fish boxes. Inside of the large air conditioned helm area there is plenty of seating with three helm chairs and bench seating to port and starboard. This creates a pleasurable area to cruise with family and friends who can all be part of the good times in one area of communication. The center lined helm is well laid out and ideal for functionality and use. Going down the stairs you enter the cabin and find the spacious 6'7" headroom and two stateroom layout. To port is the aft stateroom with two bunks, one of which is Pullman style. To starboard is a spacious head with separate shower stall. Forward is the master stateroom with a privacy bulkhead and double doors. The galley and salon common area combine style and functionality with a comfortable feel. Call for your showing today, as this is a opportunity you will not want to miss.

Salon and Galley

- Interior: Walnut wood and Shitake interior seating
- Amtico Walnut flooring with carpet cover
- Air conditioner and heater 240V
- Removable table
- L-shaped seating to port with storage underneath
- Vinyl headliner
- Home theatre system with TV
- Two-burner ceramic cooktop
- Contoure convection microwave oven
- Refrigerator and freezer drawers
- Stainless steel sink
- Central vacuum
- Overhead hatches
- Cabinet and drawer storage
- Mirror over salon seating

Master Stateroom

- Centerline island queen berth with storage beneath
- Privacy doors
- Comforter, pillows, and shams
- TV 15" LCD and DVD player
- Two cedar-lined hanging lockers to port and starboard

- Overhead hatch
- Reading lights
- Cabinet storage
- Carpet cover over walnut sole

Head

- Vanity with storage cabinet
- Framed mirror
- Ventilation fan
- Enclosed shower stall
- Molded fiberglass sole, walls, and ceiling
- Cabinet storage
- Dometic head system

Aft Stateroom

- Upper and lower berths
- Upper berth Pullman style
- Storage under bottom berth
- Hanging locker
- Electrical panel
- Storage drawer
- Stereo control
- Reading lights

Helm

- Molded fiberglass helm deck with dual hydraulic rams lift to engine room
- Raymarine G Series Electronics Package
- Air conditioning
- Accessories switch panel
- Modified L-shaped seating on port and starboard side
- Hydraulic steering system with tilt wheel
- Edson stainless steering wheel with control knob
- ZF electronic controls with engine synchronizer
- Bow thruster control
- Compass
- Tilt out helm pod for easy access to wiring and electronics
- Three Pompanette helm chairs
- Stereo remote Control

- Sony marine speakers
- Sliding door for cabin entry
- Storage under starboard seating
- Freezer under port seating
- Helm sole carpet cover
- Custom tackle drawer storage
- Three windshield wipers
- Day hatch quick engine room access

Electronics

- Raymarine G Series Electronics Package
- Digital engine displays
- Two gS 165 15.4" Glass Bridge Multifunction Displays
- RS130 GPS Receiver
- CAM100 Day/Night Camera
- Gen2 Satellite TV System
- CP100 Sonar DownVision Module
- B260 Bronze Thru-Hull Transducer
- 4KW 48' Super HD Digital Open Array Radar
- EV-400 Evolution Power Pilot Auto-Pilot
- Ray218 VHF Radio
- Tower Electronics:
 - Two a75 7" Multifunction Display with Wi-Fi and Lighthouse Charts-NOAA Vector
 - Ray218 VHF Radio

Hull and Deck

- Bow thruster
- Hull design features Carolina flare and prop pockets
- Anti-fouling bottom coating including epoxy primer, sealer, and ablative top coat
- Five year transferable structural warranty
- Bronze underwater through-hull fittings
- Painted boot stripe
- Custom aluminum bow rail
- Heavy duty rub rail with stainless steel insert
- Double-stringer bulkhead construction
- Polished stainless steel anchor roller assembly
- Fortress anchor with line and chain
- Quick windless with up/down deck switches
- Three deck hatches
- Veem prop upgrade

Cockpit

- 100 + sq. ft. usable cockpit space
- Sony marine speakers
- 65 gallon transom livewell
- Switch panel
- Glendinning cable master automatic shore cable retractor
- Cockpit step box
- 1/2" reinforcing plate for mounting fighting chair
- Two in-deck fish boxes with macerated drains
- Eight gunnel mounted rod holders
- LED courtesy lighting
- Removable bolster cushions
- Self bailing and large scuppers
- Transom door and lift gate
- Fresh and raw water wash-down
- Step box storage tub
- Mezzanine seating port and starboard
- Tower leg and overhead rod holders
- Gunnel hawse pipes and cleats

Engine Room/Mechanical

- Two CAT C12 715hp engines
- Onan generator 11.5kw with sound shield
- Excellent accessibility to outboard and inboard sides of engines
- Heavy duty 12v deep cycle batteries
- Battery switches
- Gel coat finished engine room
- Macerator pump out w/overboard discharge
- Engine displays
- Oil change system
- Four 12 volt automatic and manual bilge pumps
- Fireboy fire suppression system
- Phase Three three stage smart charger
- Sound insulation
- Recessed hydraulic Bennett trim tabs
- Retractable 50 amp shore power cord

Palm Beach Tower and Molded Hardtop

- Six recessed lights

- Radar pod express triangular style
- Ten rod holders on tower legs and hardtop
- Recessed teaser reel door with push style bracket
- Molded one piece standing platform
- Two Rupp 31' spreader outriggers
- Rupp aft lay down center rigger
- Electronic controls & steering
- Bench seat with a backrest
- Custom isinglass enclosure
- Dual rod locker storage in hardtop

Исключения

При продаже яхты исключаются личные вещи владельца.

Отказ от ответственности

Компания предоставляет описание судна или яхты добросовестно, но не может гарантировать точность этой информации, а также не ручается за техническое состояние. Покупатель должен проинструктировать своих агентов или оценщиков исследовать представленную информацию более подробно, по собственному желанию. Продажа судна или яхты, изменение цены или снятие с продажи будет происходить без предварительного уведомления.

ФОТОГРАФИИ

Profile



Master Stateroom



Salon



Galley



Cockpit mezzanine seating



Master Stateroom



Port Hanging Locker Open



Salon and Galley



Salon Entrance



Salon and Stateroom Entrances



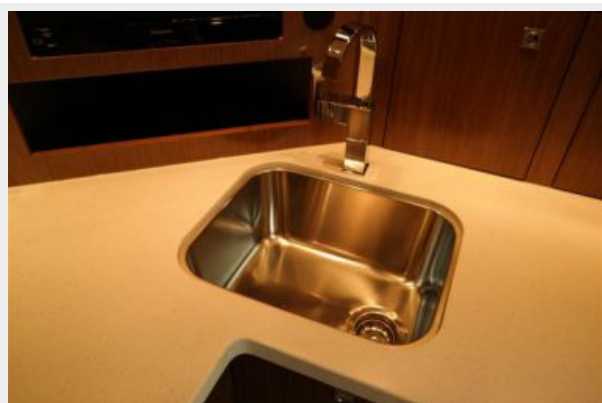
Galley



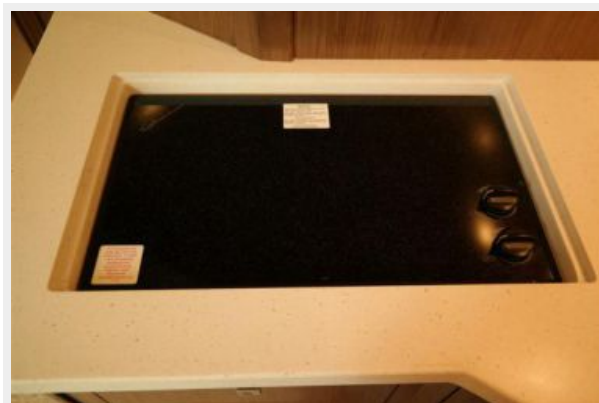
Refrigerator/Freezer



Galley Sink



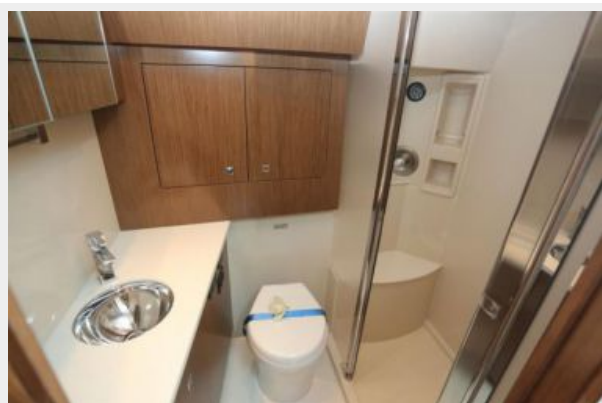
Galley Stovetop



Electric Panel



Head



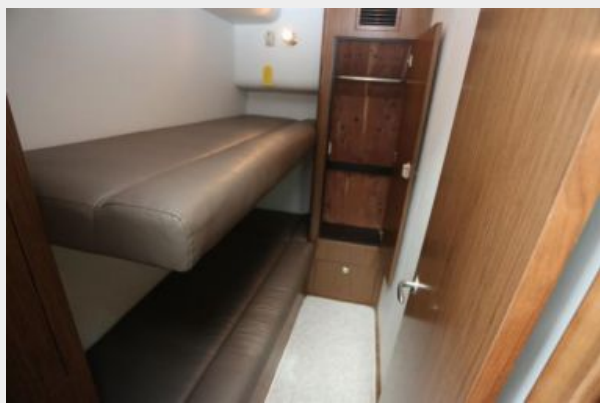
Aft Stateroom



Aft Stateroom Pullman Berth Down



Aft Stateroom Pullman Berth Up



Helm



Helm Area



Port Helm Seating



Rod Storage in Hardtop



Rod Storage in Hardtop



Drinkbox



Storage under Mezzanine



Transom Livewell



Fishbox



Tower Helm



Raymarine Radar



Engine Room Lift Access



Engine Room Lift Access



Engine Room



Starboard Engine



Helm Area



Helm Area



Helm Area



Helm Area



Cockpit and Mezzanine



Livewell



Palm Beach Tower



Teaser Reel Compartment



Tower to Bow View



Tower Helm



Tower Electronics



Tower Helm



Foredeck





КОНТАКТЫ

Андрей Шестаков (Andrey Shestakov) – ведущий яхтенный брокер отдела продаж яхт и судов компании Shestakov Yacht Sales Inc. Официальный представитель Shestakov Yacht Sales Inc. для русскоговорящих клиентов в центральном офисе компании в Майами/Форт Лодердейл/Флорида/США.

Контактная информация

Email: andrey@shestakovyachtsales.com

Web: shestakovyachtsales.com

Телефоны

Краснодарский край: **+7(918)465-66-44**

США, Майами, Флорида: **+1(954)274-4435**

Время работы

Понедельник – Суббота: **9:00 - 21:00**
EDT

Воскресенье: **Закрето**

Адрес



Harbour Towne Marina, 850 NE 3rd St,
STE 213, Dania, FL 33004