

VELOZ — AZIMUT



Builder: [AZIMUT](#)

Year Built: 2010

Model: Motor Yacht

Price: PRICE ON APPLICATION

Location: United States

LOA: 100' 0" (30.48m)

Beam: 22' 3" (6.78m)

Max Draft: 6' 7" (2.01m)

Cruise Speed: 24 Kts. (28 MPH)

Max Speed: 30 Kts. (35 MPH)

Our experienced yacht broker, Andrey Shestakov, will help you choose and buy a yacht that best suits your needs **Veloz — AZIMUT** from our catalogue. Presently, at Shestakov Yacht Sales Inc., we have a wide variety of yachts available on our sale's list. We also work in close contact with all the big yacht manufacturers from all over the world.

If you would like to buy a yacht **Veloz — AZIMUT** or would like help answering any questions concerning purchasing, selling or chartering a yacht, please call **+1(954)274-4435**

TABLE OF CONTENTS

TABLE OF CONTENTS	2
SPECIFICATIONS	4
Overview	4
Basic Information	4
Dimensions	4
Speed, Capacities and Weight	4
Accommodations	5
Hull and Deck Information	5
Engine Information	5
DETAILED INFORMATION	6
Overview	6
Technical Data	6
Recent Upgrades	7
Exterior Spaces	7
Interior	7
Salon	7
Master Stateroom & VIP	8
Galley & Crew	8
Engine Room	9
Navigation	9
Hull & Deck	9
Safety Equipment	10
Exclusions	10
Exclusions	10
Disclaimer	10
PHOTOS	11
CONTACTS	18
Contact details	18

Telephones	18
Office hours	18
Address	18

SPECIFICATIONS

Overview

A MUST SEE!!!! The Azimut 100 Leonardo combines **sportiness and elegance**. With its **exclusive interior layout**, it proves to be an elegant loft designed to assure owner and guests **entertainment and relaxation**.

Only 250 Hours on 16V2000 M92s Interior shows like new!

Trac Fin Stabilizers

Basic Information

Category: Motor Yacht

Model Year: 2010

Year Built: 2010

Country: United States

Dimensions

LOA: 100' 0" (30.48m)

Beam: 22' 3" (6.78m)

Max Draft: 6' 7" (2.01m)

Speed, Capacities and Weight

Cruise Speed: 24 Kts. (28 MPH)

Cruise Speed RPM: 2250 Kts.

Max Speed: 30 Kts. (35 MPH)

Max Speed RPM: 2450 Kts.

Displacement: 220462 Pounds

Water Capacity: 476 Gallons

Fuel Capacity: 2901 Gallons

Accommodations

Total Cabins: 4

Total Heads: 4

Crew Berths: 4

Crew Heads: 1

Hull and Deck Information

Hull Material: Fiberglass

Engine Information

Engines: 2

Manufacturer: MTU

Model: 16V 2000 M 92

Engine Type: Inboard

Fuel Type: Diesel

DETAILED INFORMATION

Overview

Azimut 100 Leonardo

Combines sportiness and elegance. With its exclusive interior layout, it proves to be an elegant loft designed to assure owner and guests entertainment and relaxation. The 100 Leonardo is a class of its own; a yacht of extremely refined design with uniquely stylish and dynamic lines. The superstructure is set slightly further back towards the stern to further highlight the dynamic and aggressive character of its profile, leaning further towards the horizon. A dynamic concept, spacious sun decks and unique solutions - such as the staircase that links the flybridge to the saloon or the crystal ceiling panel of the wheelhouse - make the 100 Leonardo a great ambassador for style and creativity. Exterior spaces are a feast for one's eyes with its unique layout that breaks the traditional standards for yachts in this class. This provides the owner with the ideal boat to maximize the pleasure of entertaining and ensuring that every moment aboard is experienced as intensely as possible. A wonderfully exclusive loft at sea. This is probably the most accurate description for the 100 Leonardo, designed to host social occasions aboard, at any time and any place, thanks to an unparalleled level of privacy. The saloon has been conceived as a space to be experienced in the most intensive way and allows for an incredible scene: flybridge, cockpit and the stern section filled with happy guests... proof of its unquestionable lively character.

Technical Data

Azimut 100 Leonardo - Technical characteristics (Data refers to UNI ISO 8666 conditions)

Length overall (incl. pulpit)	30.75 m (100' 10")
Hull length (incl. platform)	30.45 m (99' 11")
A Beam max	7.15 m (23' 4")
Draft (incl. props at full load)	2.02 m (6' 7")
Displacement (at full load)	105.5 t
Engines	2 x 2216 mHP (1630 kW) MTU 16V 2000 M92
Maximum speed (performance test mass)	31 kn
Cruising speed (performance test mass)	20.5 kn
Fuel capacity	10750 l (2838 U.S. Gal)
Water capacity	1750 l (462 U.S. Gal)
Cabins	4 + 2
Berths	8 + 3
Head compartments	4 + 2
Building material	VTR/GRP

Exterior styling & concept	Stefano Righini
Interior designer	Azimut Yachts
Keel	V-Shape with angle of deadrise 12.3° aft
Builder	

Recent Upgrades

- New Gel Batteries: House, Main engine, emergency, and Generator (10/2014)
- (2) New batteries chargers installed (10/2014)
- New Stainless Steep Top on Flybridge (10/2014)
- New Corian exterior counter tops (10/2014)
- **MTU Warranty**

Exterior Spaces

The exterior of the Leonardo is set up to relax and entertain. Helm is positioned forward with companion lounge. Al fresco entertaining is focused around a dinette with generous seating around two split tables, allowing guest to move freely about the bridge. Appliances include a very nice Techimpex stainless steel grill, wet bar, refrigerator and ice machine. All the way aft is a sunpad that surrounds a circular Jacuzzi spa.

At the bow is a large U-shaped lounge also with split tables. The aft deck dining lounge repeats the U-shape around one large hi-low table.

Interior

Decor throughout the yacht is predominately light oak with cordovan leather accent panels on the bulkheads and joinery. Guests can retreat to the four staterooms below deck. Accommodations are provided for eight to ten guests, and each stateroom has an en suite head. The master stateroom has a favorable aft location. Forward is the VIP stateroom and at mid-ship are two guest cabins., One with a double bed the other with twin berths, and both with an additional Pullman berth. Opening portholes throughout the guest areas let in fresh air when the weather is right.

Salon

The main salon has an open layout. Furnishings include three curved sofas, low oval cocktails tables, a sleek dining table with eight leather chairs, and huge bar in the aft corner. Close the salon doors, and the dining area becomes an intimate space with a great view and protection from the elements. The flybridge above is reached via an open stainless steel stairway with

etched glass treads.

Features:

- 42" Plasma TV on a lift system
- DVD player
- Bar with wine cooler, ice machine, and beverage refrigerator
- Three amplifiers wired to bow, flybridge and cockpit speakers

Master Stateroom & VIP

Large windows give the master a light and airy feel. The king size berth is recessed into the bulkhead, creating a lighted soffit above. A chaise lounge lies next to the bed with drawers built into the bottom. The master bath has a large shower with multi-head spray tower.

Features:

- LG 32" plasma TV
- DVD Player
- Beverage refrigerator

VIP stateroom features:

- Queen island berth
- 36" LG plasma TV
- DVD player

Galley & Crew

The crew quarters, galley and washer/dryer are situated between the master stateroom and the engine room. Access to these areas is through a spiral staircase outboard of the salon bar. There are two en suite crew cabins, one with a double berth and one with upper-and lower singles.

Features:

- Miele washer and dryer
- Central Vacuum
- Two (2) Frigomar custom refrigerator
- Gaggenau 4 burner cook top
- Gaggenau convection oven
- GE microwave
- Miele dishwasher

Engine Room

Engine room is very clean. Twin MTU M92 main engines have less than 250 Hrs. They have a V-drive configuration with remote-mounted reduction gears. Safe access underway is through a door (also a secondary emergency escape) from the crew quarters to the engine room when the transom door cannot be used.

Features:

- Electrical system - 220/120VAC three phase 60Hz
- 55kw Kohler generators - 350 hours
- Converter system
- **Bow and stern thrusters**
- **ABT stabilizers**
- Cruair air conditioning
- Two 37 kw freshwater pumps
- Two hot water heaters - 100 liters/each
- Two Grey water tanks and pumps
- One (1) Blackwater tank and pump

Navigation

- Raymarine electronics package
- Radar/chartplotter GPS instruments at pilothouse and bridge
- Raytheon ST290 speed and depth
- Rudded angle indicator
- Compass
- VHF
- ACR searchlight touchpads at pilothouse and bridge

Hull & Deck

Teak decks are laid throughout the yacht exterior, including the bow and swim platform. The center section of the transom fold down to create the swim platform, providing easy access to the water. Personal watercraft are stowed in small garages to port and starboard between the engine room and transom. A small jet tender and its companion crane are stowed in a recessed compartment on the foredeck.

Features:

- Two Coats of bottom paint, prop speed, and new zincs 10/2014
- Shower on swim platform
- Six underwater lights

- Two Lofrans electric windlasses
- Two Lofrans warping winches aft

Safety Equipment

- First air, PFD's signaling equipment
- Fire extinguisher and smoke detectors throughout
- High water and fire alarms, throughout
- Bilge and fire pumps
- CO2 in engine room with remote pull

Exclusions

Owner's personal effects, tender/personal water craft watermaker, EPIRB

Exclusions

Owner's personal belongings.

Disclaimer

The Company offers the details of this vessel or yacht in good faith but cannot guarantee or warrant the accuracy of this information nor warrant the condition of the vessel. A buyer should instruct his representatives, agents, or his surveyors, to investigate such details as the buyer desires validated. This vessel or yacht is offered subject to prior sale, price change, or withdrawal without notice.

PHOTOS



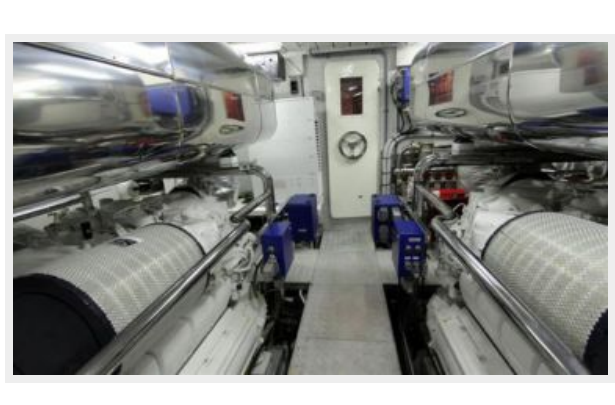












CONTACTS

Andrey Shestakov, leading yacht broker of the sales department of Shestakov Yacht Sales Inc. Shestakov Yacht Sales Inc., the official representative of the Miami/Fort Lauderdale FL headquarters.

Contact details

Email: andrey@shestakovyachtsales.com

Web: shestakovyachtsales.com/en/

Telephones

USA: +1(954)274-4435

Office hours

Monday – Saturday: **9:00 - 21:00** EDT

Sunday: **closed**

Address



Harbour Towne Marina, 850 NE 3rd St,
STE 213, Dania, FL 33004