

## AARON — AZIMUT



**Судостроитель:** [AZIMUT](#)

**Год постройки:** 2009

**Модель:** Моторная яхта

**Цена:** ЦЕНА ЯХТЫ ПО ЗАПРОСУ

**Местонахождение:** United States

**Длина общая:** 48' 10" (14.88m)

**Ширина:** 15' 7" (4.75m)

**Макс. осадка:** 4' 5" (1.35m)

Купить **AARON — AZIMUT** а также выбрать подходящую вам яхту из нашего каталога яхт вам поможет опытный яхтенный брокер Андрей Шестаков. На сегодняшний день компания **Shestakov Yacht Sales Inc.** имеет большое количество яхт в собственном списке продаж, а также тесно сотрудничает со всеми крупными яхтенными производителями по всему миру.

Для того чтобы купить яхту **AARON — AZIMUT** а также проконсультироваться по любому вопросу связанному с покупкой, продажей, чартером яхт позвоните по телефону **+7(918)465-66-44**.

# ОГЛАВЛЕНИЕ

ОГЛАВЛЕНИЕ	2
ХАРАКТЕРИСТИКИ	4
Обзор	4
Основная информация	4
Размеры	4
Скорость, вместимость и масса	4
Размещение	4
Корпус и палуба	5
Информация о двигателе	5
ПОДРОБНОЕ ОПИСАНИЕ	6
Deck Equipment	6
Flybridge Equipment	7
Main Salon	8
Master Stateroom	9
Master Head	9
Guest Stateroom Port	10
Galley	10
Day Head	11
Recent Upgrades	11
Electronics & Navigation Equipment	12
Electrical Systems	12
Engines & Mechanical	13
Crew Cabin	14
Certifications	14
Exclusions	14
Disclaimer	14
Исключения	14
Отказ от ответственности	14

---

ФОТОГРАФИИ	15
КОНТАКТЫ	21
Контактная информация	21
Телефоны	21
Время работы	21
Адрес	21

# ХАРАКТЕРИСТИКИ

## Обзор

The Azimut 47 is one of the latest stylistic development from Azimut for the Flybridge range, with its characteristic superstructure windows, the skillful harmony of its dimensions and muscles and the overall dynamism that gives the impression of movement even when still. The generous volume of the hull and the innovative layout inside guarantees guests aboard the Azimut 47 an unrivaled level of comfort.

## Основная информация

**Тип судна:** Моторная яхта

**Модельный год:** 2009

**Год постройки:** 2009

**Страна:** United States

## Размеры

**Длина общая:** 48' 10" (14.88m)

**Ширина:** 15' 7" (4.75m)

**Макс. осадка:** 4' 5" (1.35m)

## Скорость, вместимость и масса

**Водоизмещение:** 38600 Pounds

**Чистый вес:** 42900 Pounds

**Вместимость воды:** 156 Gallons

**Вместимость сточного бака:** 58 Gallons

**Объем топливного бака:** 528 Gallons

## Размещение

**Всего кают:** 2

**Всего коек:** 8

## Корпус и палуба

---

**Материал корпуса:** Fiberglass

**Цвет корпуса:** WHITE

## Информация о двигателе

---

**Двигатели:** 2

**Производитель:** Caterpillar

**Модель:** C-9

**Тип двигателя:** Inboard

**Тип топлива:** Diesel

---

# ПОДРОБНОЕ ОПИСАНИЕ

---

## Deck Equipment

---

- Docklines and Fenders
- Stainless Bowrails and Stantions
- Nemo Round Opening Hatch On Foredeck
- White Diamond Pattern Nonskid Decks
- Stainless Steel Rubrail
- 24v Running Lights
- (3) 24v Rule 2000 Bilge Pumps and Float Switches
- Stainless Cleats and Chocks
- Anchor Locker
- 25lb. Delta Style Anchor w/All Chain Rode
  
- Quick Anchor Windlass w/Foot Controls
- 2 Piece Large Glass Windshield
- Tinted Plexi Windscreen on Flybridge
- Stainless Windshield Wipers
- Jabsco Search Light w/Remote Control
- Trumpet Horn
- Fiberglass Swim Platform w/Courtesy Lighting
- Retractable Swim Ladder
- Teak Cockpit Sole
- Teak Cockpit Table and 4 Director Chairs
- 6 Teak Tread Ladder
- 50 Amp Shore Cord
- TV and Phone Hook Receptacles
- Side Power Bow Thruster
- 23 Adult Life Jackets
- 5 Child Life Jackets(60 - 90 lb.)
- 4 Child Life Jackets (30 -60 lb.)
- 3 Infant Life Jackets
- Throwable Ring
- Type 4 Throwable Cushion
- Safety Flares
- Shurhold Chamois Mop
- Hot and Cold Transom Shower
- Cockpit Coutesy Lights
- JL Audio Cockpit Stereo Speakers
- Cockpit Trash Receptacle
- Cockpit Engine Room Access
- Magma Stainless Gas BBQ

- Stainless and Wood Decorative Steering Wheel
- Radar Arch
- Flybridge Table and Settee
- Flybridge Sunpad
- Flybridge Freezer
- Electric BBQ On Flybridge
- Hydraulic Steering
- 4" Ritchie Compass (Upper and Lower)
- Adjustable Steering Wheels (Upper & Lower)
- Stamoid Exterior Upholstery Covers
- Black Weblon Exterior Window Covers
- Manual Controls For Fire Suppression System
- Hand Held Fire Extinguishers
- Manual Bilge Pump
- 51000 BTU Cruisair AC w/SMX Controls
- Shore Water Connection
- Stainless Rod Holders
- Side Boarding Gates
- Crews Cabin
- Transom Bench Seating
- Opac Mare Passarelle
- Foredeck Sunpad w/Cover
- Bimini Top w/Stainless Frame
- Ships Bell
- Stainless Deck Fills (Fuel, Water Waste)
- Aluminum Boat Hook
- 24v Hydraulic Trim Tabs
- Removeable Tender Cradle
- 12' Zodiac Tender w/25 HP Yamaha 4 Stroke
- Aft Deck Floodlights
- Stainless Flag Staff
- VHF Antenna
- GPS Antenna
- Mirrored Shark Fin Side Windows
- Opening Windows in Side Cabintop
- Port and Stbd. Side Access Doors

## **Flybridge Equipment**

---

- Pull Out Drawer
- Bimini Top w/Stainless Frame
- Upholstered Sun Pad

- Stamoid Covers For Dash and Upholstery
- Upholstered Helm Chair
- Deck Scuppers
- Stainless Framed Lexan Windscreen
- Remote For Search Light
- Decorative Tilt Steering Wheel
- Trim Tab Controls
- Side Power Bow Thruster Control
- Jabsco Search Light Control
- Quick Chain Counter
- Ray Marine C-80 Chart Plotter
- Raymarine Radar
- Raymarine 240 VHF w/Remote Speaker
- Raymarine ST6002 Auto Pilot
- Adjustable Helm Chair
- Helm Station With Electronics and Electric Controls
- L Shaped Tan Upholstered Settee with Table
- Hand Held Fire Extinguisher
- Freezer
- Electric Grill
- Radar Arch
- Dual AM/FM/CD Stereo w/Weather Receiver and Speakers
- Anchor Light
- TV , VHF, and GPS Antennas
- Stainless Flag Staff
- 24v Trumpet Horn
- Type 4 Throwable Cushion
- Chart Storage
- Storage Drawer
- Lexan Hatch To Aft Deck Stairs
- Stainless Railings
- Diamond Pattern White Nonskid Deck

---

## Main Salon

---

- Air Conditioning
- AM/FM/CD Stereo and Speakers
- 24v Recessed Lighting w/Dimmer Switches
- Beige Carpeting
- Beige Fabric Upholtery
- Dishware Storage Cabinet
- Opening Windows
- Samsung 30" Flatscreen TV



- Bose Surround Sound System
- Decorative Curtains and Blinds
- U Shaped Settee
- Bench Seat w/Storage Beneath (port)
- Decorative Throw Pillows
- Hi-Low Electric Foldable Table
- Pull Out Sleeper Sofa
- Dinette
- Lower Helm Station With Nav Equipment And Controls
- 110v and 24v Circuit Breaker Panels
- Remote Generator Start Panel
- Honey Oak Soles
- Sharkfin Mirrored Windows
- Opening Fwd. Windows (port and Stbd)
- Pull Out Dishware Cabinet
- Pull Out Drawer Under Port Bench Seat
- Hand Held Fire Extinguisher

---

## Master Stateroom

---

- Black and Decker Hand Held Vacuum
- 110v Outlets
- Hanging Lockers w/Shelves and Full Length Mirror
- 24v Recessed Lighting w/Dimmer Switches
- Beige Plush Carpet
- Toshiba 18" Flat Screen TV
- Throw Pillows
- Decorative Bed Cover And Shams
- Queen Island Bed w/ Large Pullout Drawer
- Hand Held Fire Extinguisher
- Air Conditioning
- Custom Fitted Sheets
- Opening Hatch w/Shade
- Large Hull Side Windows
- Wooden Mini Blinds
- Ensuite Head And Shower
- Decorative Rope Lighting
- Bedside Reading Lights

---

## Master Head

---

- Decorative Molded Sink Basin

- Hot and Cold Pressure Water
- Decorative Soap Dish and Toothbrush Holders
- Techma Electric Toilet
- Stainless Trash Container
- Stainless Toilet Brush Holder
- 24v Fluorescent Lighting
- 110v Outlets
- Opening Port Hole
- Wooden Mini Blinds
- Sliding Mirrored Vanity w/ Storage
- Toilet Paper Holder
- Circular Shower Stall
- Honey Oak Sole

---

## Guest Stateroom Port

---

- 110v Outlets
- Hanging Locker
- 24v Lighting
- Beige Plush Carpet
- Decorative Bed Cover And Shams
- Twin Side By Side Berths
- Air Conditioning
- Hand Held Fire Extinguisher
- Custom Fitted Sheets
- Opening Hatch w/Shade
- Large Hull Side Windows
- Wooden Mini Blinds
- Reading Lights Above Berths
- Decorative Throw Pillows
- Pull Out Drawer

---

## Galley

---

- Hot & Cold Pressure Water
- Recessed Stainless Sink Basin
- Cuisinart Toaster Oven
- Espresso Machine
- Decorative Faucet
- Storage Drawers
- Hand Held Fire Extinguisher
- Above & Below Counter Honey Oak Drawers and Cabinets

- 110v Outlets
- 24v Lighting
- Air Conditioning
- Trash Receptacle
- Ceran 3 Burner Cooktop w/ Stainless Panel Behind.
- Courtesy Lighting
- Stainless Opening Porthole
- Overhead Light and Smoke Extractor
- GE Turntable Microwave Oven
- Waeco Dual Voltage Over Under Refrigerator Freezer
- Large Storage Beneath Sole
- Acrylic Countertops
- Access Under Sole To Water Tank
- Full Set Of Silverware In Molded Drawer

## Day Head

---

- 24v Flourescent Lighting
- Circular Shower Stall
- Hot and Cold Pressure Water
- Decorative Sink Basin
- Mirrored Vanity With Storage
- Stainless Steel Trash Receptacle
- Stainless Toilet Brush Holder
- Stainless Towel Bar
- Toilet Paper Holder
- Honey Oak Sole
- Techma Electric Toilet
- Towel Bar
- Decorative Soap Dish
- 110v GFI Outlets
- Stainless Opening Porthole
- Wooden Mini Blinds

## Recent Upgrades

---

- Replaced Cutlass bearings March 2013
- Tuned props and put on new prop speed March 2013
- Had shafts inspected and dialed March 2013
- Aligned engine with laser sight March 2013
- New zincs March 2013 and August 2013
- Replaced fresh water pump with a new Headhunter pump Jan 2013

- New hot water heater Feb 2013
- New air conditioning raw water pump, and all fittings April 2013
- Charged air conditioning system Oct 2013
- Descaled air conditioning raw water loops Oct 2013
- New fly bridge seat cushions March 2013
- New cockpit seat cushions March 2013
- New bow sun pads March 2013
- Replaced bimini top Nov 2013
- New tender cover March 2013
- Repaired hydraulic system, changed fittings, hoses, and rebuilt hydraulic pump May 2013
- Installed stereo and speakers on fly bridge Feb 2013
- New VHF on fly bridge Feb 2013
- Replaced the cabin blinds June 2013
- Installed new BBQ grill April 2013
- Teak was 3 part treated Oct 2013
- Replaced all batteries Dec 2013
- New refrigerator in galley (In Process)

## Electronics & Navigation Equipment

---

Raymarine C-80 Chart Plotter (Upper and Lower Helms)

Raymarine 72 Mile Radar

- 4" Ritchie Compass
- Mathers Micro Commander Throttles and Shifts (Upper & Lower)
- Bennett Trim Tabs and Indicator
- Raymarine Tri Data
- Raymarine 240 Hand Held VHF
- Raymarine VHF Radio w/ Remote Speaker
- Raymarine ST 6002 Auto Pilot (Upper and Lower)
- Digital Chain Counter
- Side Power Bow Thruster
- Sony Am/FM/CD Stereo and Speakers
- Systems Monitor Alarm Panel

## Electrical Systems

---

- (3) 24v rule 2000 Bilge Pumps
- 24v Blowers
- 24v Lighting
- 24v Fresh Water Pump
- 110v Hot Water Heater

- 15.5 KW Onan Gen In Soundshield
- 24v Windshield Wipers
- 24v Running Lights
- Dimmer Switches for Interior Lighting
- Quick 12v Anchor Windlass
- Shore Power Phone, And TV Inlet
- Glendenning Cable Master
- 50Amp Galvanic Isolator
- 110v Hot Water Heater
- 110v Outlets w/GFI's
- 15 Amp Marine Battery Charger (Gen)
- Dolphin 24v 50 Amp Marine Battery Charger
- 1 12v Gen Battery
- 4 12v AGM Engine Start Batteries
- 6 12v AGM Marine House Batteries
- 50 Amp Shore Cord
- Mathers Electronic Shift and Throttle Controls
- 24v Trumpet Horn
- GFCI For All Outlets

## Engines & Mechanical

---

### Access From Hatch In Cockpit Sole

- Twin Caterpillar C9 575 HP Diesels (637 Hrs Port, 639 Hrs Stbd.)
- ZF V-Drive Transmissions
- Stainless Steel Shafts
- Dual 1000 Series Racors With Manifolds (Mains and Gen)
- Port and Stbd Fuel Tanks w/External Sight Gauges
- Cruise Air Air Conditioning Compressors
- Air Conditioning Circulating Pump
- Sea Strainers for Engs. Gen, and AC
- Bilge Pump w/Float Switch
- Fiberglass Generator Muffler
- 15.5 KW Kohler Gen In Soundshield (1136 Hrs.)
- Bilge Discharge Through Engines
- Seafire FM-200 Fire Suppression System
- Engine Synchronizers
- Fresh Water Retractable Hose
- Retractable Flourescent Light
- Dripless Packing Glands
- 24v Blowers
- Port and Stbd. 1000 Litre Fuel Tanks w/Sight Gauge

- New Head Hunter Fresh Water Pump

---

## Crew Cabin

---

- Single Berth
- Air Conditioning
- 24v Lighting
- Opening Porthole
- Head
- Sink
- Shower w/Curtain

---

## Certifications

---

As-is

---

## Exclusions

---

Tools & Owners Personal Effects

---

## Disclaimer

---

The Company offers the details of this vessel in good faith but cannot guarantee or warrant the accuracy of this information nor warrant the condition of the vessel. A buyer should instruct his agents, or his surveyors, to investigate such details as the buyer desires validated. This vessel is offered subject to prior sale, price change, or withdrawal without notice.

---

## Исключения

---

При продаже яхты исключаются личные вещи владельца.

---

## Отказ от ответственности

---

Компания предоставляет описание судна или яхты добросовестно, но не может гарантировать точность этой информации, а также не ручается за техническое состояние. Покупатель должен проинструктировать своих агентов или оценщиков исследовать представленную информацию более подробно, по собственному желанию. Продажа судна или яхты, изменение цены или снятие с продажи будет происходить без предварительного уведомления.

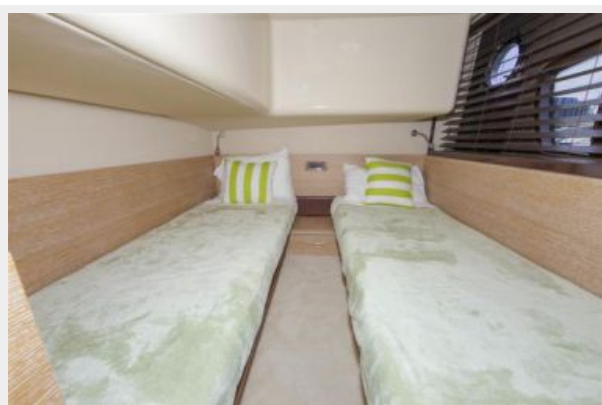
# ФОТОГРАФИИ















# КОНТАКТЫ

---

Андрей Шестаков (Andrey Shestakov) – ведущий яхтенный брокер отдела продаж яхт и судов компании Shestakov Yacht Sales Inc. Официальный представитель Shestakov Yacht Sales Inc. для русскоговорящих клиентов в центральном офисе компании в Майами/Форт Лодердейл/Флорида/США.

## Контактная информация

---

Email: [andrey@shestakovyachtsales.com](mailto:andrey@shestakovyachtsales.com)

Web: [shestakovyachtsales.com](http://shestakovyachtsales.com)

## Телефоны

---

Краснодарский край: **+7(918)465-66-44**

США, Майами, Флорида: **+1(954)274-4435**

## Время работы

---

Понедельник – Суббота: **9:00 - 21:00**  
EDT

Воскресенье: **Закрето**

## Адрес

---



Harbour Towne Marina, 850 NE 3rd St,  
STE 213, Dania, FL 33004