

## ADAMS FAMILY — HAMPTON



**Builder:** HAMPTON

**Year Built:** 2008

**Model:** Motor Yacht

**Price:** PRICE ON APPLICATION

**Location:** United States

**LOA:** 63' 8" (19.41m)

**Beam:** 18' 0" (5.49m)

**Min Draft:** 5' 2" (1.57m)

**Max Draft:** 5' 2" (1.57m)

**Cruise Speed:** 21 Kts. (24 MPH)

**Max Speed:** 25 Kts. (29 MPH)

Our experienced yacht broker, Andrey Shestakov, will help you choose and buy a yacht that best suits your needs **Adams Family — HAMPTON** from our catalogue. Presently, at Shestakov Yacht Sales Inc., we have a wide variety of yachts available on our sale's list. We also work in close contact with all the big yacht manufacturers from all over the world.

If you would like to buy a yacht **Adams Family — HAMPTON** or would like help answering any questions concerning purchasing, selling or chartering a yacht, please call **+1(954)274-4435**

# TABLE OF CONTENTS

TABLE OF CONTENTS	2
SPECIFICATIONS	5
Overview	5
Basic Information	5
Dimensions	5
Speed, Capacities and Weight	5
Accommodations	6
Hull and Deck Information	6
Engine Information	6
DETAILED INFORMATION	7
Overview	7
Master Stateroom	7
Master Head	7
VIP Stateroom	8
VIP Head	8
Guest Stateroom	8
Salon	9
Galley & Dining	9
Skylounge/Flybridge	10
Helm	10
Deck	11
Engines & Mechanical	11
Electronics	13
Additional Features	13
Design Features	13
Exclusions	14
Disclaimer	14
Exclusions	14

Disclaimer	14
PHOTOS	15
Salon View Forward	15
Salon	15
Salon View Aft	15
Salon Seating	15
Galley View	15
Galley	15
Galley	16
Country Kitchen	16
Panagraph Doors - Port & Stbd	16
Stairway Down to Staterooms	16
Master Stateroom	16
Master Stateroom	16
Master Head	17
Cabinets, Drawers & Small Desk	17
Master Head Shower	17
VIP Stateroom	17
Guest Stateroom	18
Guest Head - Forward	18
Guest Head	18
Washer & Dryer	18
Aft Deck Seating	19
Flybridge Freezer	19
Boarding Gate	19
Skylounge Helm	19
Helm	19
Skylounge Seating	19
Wesmar Stabilizer Tank	20

UMT Davit 1000#	20
Bateries	20
Batteries/Fire System	20
Fuel Filters/Water Filter	21
A/C Engine Room	21
Lazarette	21
Spare Props	21
Fuel Filters	22
Generator #1	22
Generator #2	22
Lazarette Storage	22
Dual A/C Sea Water Pumps	23
Watermaker 700gpd	23
Engine Room	23
Lazarette	23
Engine Room	23
Engine Room	23
Engine Hours	24
Transom	24
Aft View	24
Bow View	24
CONTACTS	25
Contact details	25
Telephones	25
Office hours	25
Address	25

# SPECIFICATIONS

## Overview

The "Adams Family" has had the best of care in each and every corner of the yacht and is a pleasure to show. She is a 2008 model but when you board this beautiful Hampton you will say WOW because she looks almost new. The twin docking stations and large comfortable aft deck make this Hampton 630 Pilothouse an ideal yacht for the couple cruising on their own or hanging out with a group of friends. As of 4/10/15 "Adams Family" has new bottom paint, new zincs, Velox prop protect and a hull wax. She is ready for immediate delivery and priced right to be SOLD. Small trades in good condition like a 36 Grady White will be considered.

## Basic Information

Category: Motor Yacht	Sub Category: Sky Lounge
Model Year: 2008	Year Built: 2008
Country: United States	Vessel Top: Hardtop
Fly Bridge: Yes	Cockpit: Yes

## Dimensions

LOA: 63' 8" (19.41m)	LWL: 62' 10" (19.15m)
Beam: 18' 0" (5.49m)	Min Draft: 5' 2" (1.57m)
Max Draft: 5' 2" (1.57m)	Clearance: 21' 6" (6.55m)

## Speed, Capacities and Weight

Cruise Speed: 21 Kts. (24 MPH)	Max Speed: 25 Kts. (29 MPH)
Displacement: 75000 Pounds	Water Capacity: 300 Gallons
Holding Tank: 100 Gallons	Fuel Capacity: 1200 Gallons

## Accommodations

Total Cabins: 3	Total Berths: 4
Sleeps: 6	Total Heads: 2

## Hull and Deck Information

Hull Material: Fiberglass	Deck Material: Fiberglass
Hull Configuration: Deep Vee	Hull Color: Cream
Hull Finish: Fiberglass	Hull Designer: Jim Chen
Exterior Designer: Jim Chen	Interior Designer: Gerri Adams

## Engine Information

Engines: 2	Manufacturer: Caterpillar
Model: C-18	Engine Type: Inboard
Fuel Type: Diesel	

---

# DETAILED INFORMATION

---

## Overview

---

The Hampton 630 is the perfect yacht for those seeking quality and comfort. Mid-ship aircraft style stainless steel doors lead to wide side decks with high bulwarks for peace of mind.

This 630 has a 3 stateroom 2 head layout that takes full advantage of the generous 18 ft beam. The doorways are comfortably wide and the stairwells spacious. Even the seating is carefully designed for comfort as you will experience in the country kitchen dining area.

To really see the quality built into each Hampton, you have to look at the details. Every possible extra foot of space has been converted into useful storage. When you explore the engine room you will find that the wiring is neatly loomed and all the maintenance areas are easily accessible. Wrap your hands around the oversized deck rails and feel the strength of the beautifully welded and polished 316L stainless steel. Hamptons are as easy to maintain as they are to handle. As of 4/10/15 she has new bottom paint, new zincs, Velox prop protect and a hull wax. She is ready for immediate delivery.

Whether your interest is safe and comfortable passage-making, harbor hopping along the coast or living aboard - call today to see this Hampton 630. This is truly a yacht for all seasons and all reasons.

## Master Stateroom

---

- Full Beam Master
- Oversized queen bed with drawers/storage under and mirror over headboard
- Built in night stand tables with burl top
- Overhead decorative redwood burl ceiling treatment
- (5) Cedar lined hanging lockers
- Port side has (2) hanging lockers and drawer and cabinet units with burl top
- Stbd side has (3) hanging lockers and a make-up table with mirror and drawers and burl top
- Stool for Make-up table
- Reading lights on both sides of the bed
- LED overhead lighting with dimmer controls 24volt
- Rope lighting hidden from view
- Opening SS port lights
- 30" Sharp TV
- Pioneer AM/FM/DVD/CD Surround Sound Entertainment System
- Compartment for 8 cases of wine located under master berth

## Master Head

---

- Full size shower
- Grohe multi-port shower full body jet sprays
- Corian Countertops and Floors
- Burl wood face cabinets
- LED lighting
- GFI outlets
- (2) Port lights that open
- (2) Tecma silent toilets
- (1) sinks with Grohe faucets
- Ocean Air exhaust fans
- Towel holders

## VIP Stateroom

---

- Island queen sized berth with hinged top and drawers under
- Two cedar lined hanging lockers
- (6) cabinets and (2) drawers
- Overhead screen with manual blackout screen
- LED overhead lighting with dimmer controls
- 27" Sharp LCD TV
- Pioneer AM/FM/DVD/CD Surround sound entertainment system
- Two additional reading lights

## VIP Head

---

- Full size stall shower
- Corian floor tiles
- Corian countertops
- Burl wood face cabinets
- LED overhead lighting
- GFI outlets
- Port-light that opens
- Tecma silent toilet
- Grohe faucet
- Grohe shower faucet unit
- Ocean air exhaust fan
- Towel and tissue holder

## Guest Stateroom

---

- (2) Twin Beds
- Cedar lined hanging locker



- LED overhead lighting with dimmer controls
- (2) Opening SS Port-lights
- 19" Samsung LCD TV
- Pioneer AM/FM/DVD/CD Stereo with Pioneer speakers

---

## Salon

---

- Entertainment cabinet with Built in 40" Sharp TV, bar and bottle storage
- Bose Lifestyle 28 surround sound System
- Lighted glass china cabinet with burl top
- Large wood high/low coffee table with burl inlay
- Starboard side large L shape settee
- (2) port side chairs
- Port side table with burl top
- Port side cabinet with wine cooler, icemaker and glass cabinet with burl top
- Overhead decorative burl ceiling treatment
- Stainless steel aft sliding door with tinted safety glass
- Frameless tinted windows
- Audio controls for salon, cockpit, and country kitchen
- LED overhead lighting with dimmer controls

---

## Galley & Dining

---

The open country kitchen layout provides a huge dining and entertainment area open to the galley. Galley is also open to the salon creating a truly expansive interior.

- Stainless steel aircraft style pilothouse doors port and starboard decks
- Frameless windows with 10mm safety glass forward
- Cherry and Holly floor
- Interior stairway leading to Skylounge
- Electric blinds for forward windows
- Granite countertop with double sink and upper serving shelf
- Granite Galley floor
- Two bar stools at service counter
- GFI Outlets
- LED overhead lighting with dimmer controls
- Oversized built-in dinette settee for 8, with storage drawers at floor level
- Large dinette table with granite table top matching the galley granite
- 27" LED TV
- LG Refrigerator and Freezer with Icemaker
- Gas (4) Burner Cooktop
- GE under counter full size oven
- GE Microwave/Convection oven

- Trash compactor
- Fisher Paykel Dishwasher
- Insinkerator Garbage disposal
- Stainless Steel double sink
- Grohe faucet
- Insinkerator Instant Water heater
- GE Galley exhaust blower

---

## Skylounge/Flybridge

---

- Cherry and stainless stairway from galley
- Superbly finished in Makore wood throughout
- Flooring is FRP and carpet
- Large L-shaped seating with storage
- Skylounge high/low drop leaf table in wood
- Skylounge wet bar with sink, refrigerator, cabinets and burl top
- Frameless windows with 10mm safety glass forward
- Port and Starboard sliding windows
- Electric blind controls
- Rear stainless steel door to aft deck
- LED overhead lighting with dimmer controls
- 26" Sharp LCD TV
- Increased AC outlets and ductwork for maximum cooling
- Refrigerator/Icemaker with wood trim
- Scandvik sink and Scandvik faucet
- Two Pompanette signature series Helm chairs on SS pedestal (Captain electric, guest manual)

---

## Helm

---

- Helm finished in beautiful wood burl surface
- Chart storage drawer
- Destroyer wheel with wood trim
- Seastar Hydraulic power steering with motive pump on each main engine
- Dual Caterpillar MPD's
- Air Horn
- ARC Search Light
- System indicator panel
- Water and fuel tank gauges
- WEMA tank level indicators
- Three Windshield wipers with washers
- Hynautic trim tab controls

- VDO rudder position indicator
- Sidepower Bow and Stern Thrusters
- Wesmar stabilizers with 6.0 sq. ft. fins

## Deck

---

### Upper Aft Deck

- 1000 lb Davit with power lift and power rotate
- Wireless remote control for the Davit
- Gageneau 12" BBQ grill

### Lower Aft Deck/Transom

- Large Corian table with edging
- Seating unit with Corian on center table
- 20" LCD TV in cabinet enclosure
- Sink with Shurflo faucet and storage cabinet
- Engine room access from aft deck floor with power lift
- Water tight aircraft style transom door
- Teak treads on steps to swim platform
- Stainless steel swim ladder
- Hot and cold shower unit
- Stainless steel platform rails with storage receptacles for boarding dinghy
- Boarding ladder storage in the portside vertical riser
- (2) Independent Hydraulic Engine and Sidepower thruster controls on both the starboard and port side vertical risers
- LED overhead lighting with dimmer controls

## Engines & Mechanical

---

### Engine Room

- Dual Caterpillar C-18 ACERT Engines rated @1015 HP (863 hours)
- Racor fuel filters for each engine and 2 generators
- Jabsco engine room blowers
- Aqua 3" diameter drive shaft
- ZF500 Transmissions
- ZF 38.5 Props with 35.5" pitch
- Headhunter fresh water pumps
- Seaward 20 gal hot water heater
- Rule automatic bilge pumps
- Bosworth guzzler manual bilge pump

- Reverso oil changing system
- Marine Air AC Air handler
- (2) Chilled air reverse cycle AC system / 120KBTU
- Spare raw water pump with selector valves for AC cooling water
- Underwater exhaust system with bypass to transom
- Dripless packing glands with spare seals on shafts
- Dripless packing water supplies from both engines
- Engine room surfaces lined with insulation
- Fiberglass exhaust mufflers
- 300 gal fresh water tank
- Pressurized fresh water system
- (3) fuel tanks 1200 gallons total
- 100 gallon waste holding tank with macerator pump
- SS rudders and rudder posts with dripless shaft seals
- Color copper coded fuel, water and hydraulic fluid lines
- Seacocks and sea strainers on all through hull fittings for engine and generator raw water
- Engine room 110 Volt AC and 24Volt DC lights
- Engine room fire suppression and shut down system
- Emergency bilge pump with main engines with valves
- Fresh water outlets
- White polyurethane painted bilge

## Electrical System

- Kohler 23KW/60Hz Generator with sound shield (1507 hours)
- Kohler 15.5KW/60Hz Generator with sound shield (1502 hours)
- 3.0 KW Inverter with remote panel
- Charles ISO Boost Transformer (2)
- (2) Glendinning Cablemasters 75' 50 amp/24volt
- Charles Battery Charger 50 amp/24 volt
- (2) Charles Battery Charger 50 amp/24 volts
- (6) 200 amp heavy duty batteries with battery boxes
- (8) 100 amp heavy duty batteries with battery boxes
- (2) 4D Batteries
- Complete AC/DC breaker/distribution panel with backlight
- Main breaker panel
- Inverter zone control panel
- Inverter control panel charger monitor
- Generator control panels (2)
- Shore selector switches
- Battery selector switches
- 120 volt electrical outlets throughout
- (2) 50 amp forward shore power connections

---

## Electronics

---

- (2) Garmin 5212 GPS Plotters/Depth
- (2) VHF Radio's
- Raymarine Auto Pilot
- Raymarine Wind Meter
- Raymarine Tri Data Depth/Speed/Temp
- Azimuth Compass #1000
- (2) Camera Monitors on Bridge
- KVH 7 HD Sat TV System

---

## Additional Features

---

- Maxwell 3500 windlass with 2 control stations
- 100 lb Bruce Stainless anchor
- Bosch Washer & Dryer
- Nutone Central vacuum system
- Panasonic phone system
- Side power stern and bow thrusters
- Bow pulpit 275' anchor chain
- Deck wash downs aft and forward decks
- Stainless steel 316 grade mooring cleats, chocks, anchor roller, handrails, and stanchions
- TV, Phone and water inlets
- Stainless steel opening ports with screens
- Screens on entry doors
- Spare A/C Pump, Raw Water Pump, 24v Water Valve for Head, Repair kit for dinghy and 3700 Rule Bilge Pump located under master berth
- (1) New Chilled Water A/C Compressor

---

## Design Features

---

- Hand-laid solid fiberglass hull in one piece
- Vinylder resin for first 5 layers of hull lay-up
- Two layers of Kevlar chine to chine and 3 layers of Kevlar in the forward collision zone
- Hand-laid fiberglass deck, deckhouse, and flybridge core with high strength divinycil foam
- Hull and deck joints thru-bolted every 6" sealed and glassed with multiple layers of fiberglass
- Longitudinal and transverse stringer systems
- All doors and windows have tinted glass (not forward helm windows)
- LED lighting throughout the boat
- Interior structural components all bonded to the hull
- Molded FRP rub rails capped with stainless steel trim rails

---

## Exclusions

---

- Tool Box is excluded

---

## Disclaimer

---

The Company offers the details of this vessel in good faith but cannot guarantee or warrant the accuracy of this information nor warrant the condition of the vessel. A buyer should instruct his agents, or his surveyors, to investigate such details as the buyer desires validated. This vessel is offered subject to prior sale, price change, or withdrawal without notice.

---

## Exclusions

---

Owner's personal belongings.

---

## Disclaimer

---

The Company offers the details of this vessel or yacht in good faith but cannot guarantee or warrant the accuracy of this information nor warrant the condition of the vessel. A buyer should instruct his representatives, agents, or his surveyors, to investigate such details as the buyer desires validated. This vessel or yacht is offered subject to prior sale, price change, or withdrawal without notice.

# PHOTOS

**Salon View Forward**



**Salon**



**Salon View Aft**



**Salon Seating**



**Galley View**



**Galley**





**Galley**



**Country Kitchen**



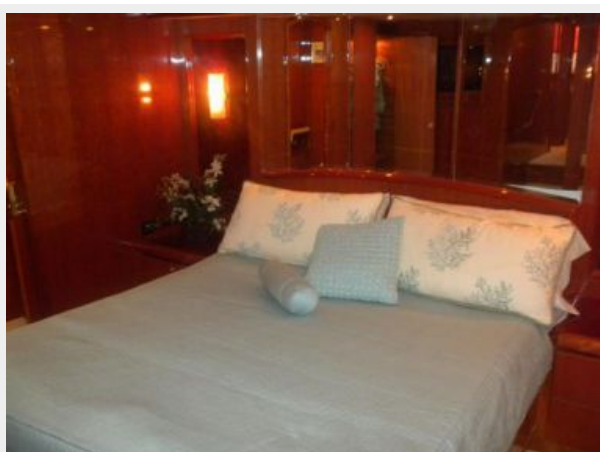
**Panagraph Doors - Port & Stbd**



**Stairway Down to Staterooms**



**Master Stateroom**



**Master Stateroom**

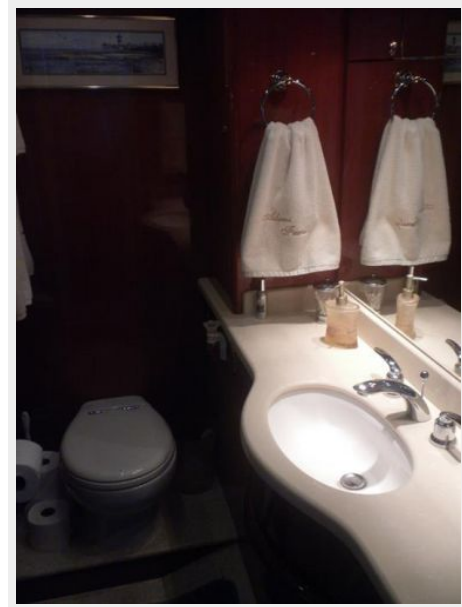




**Cabinets, Drawers & Small Desk**



**Master Head**



**Master Head Shower**



**VIP Stateroom**



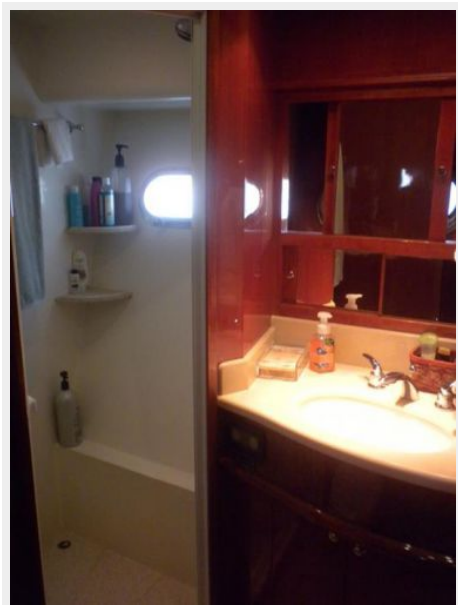
**Guest Stateroom**



**Guest Head - Forward**



**Guest Head**



**Washer & Dryer**



**Aft Deck Seating**



**Flybridge Freezer**



**Boarding Gate**



**Skyounge Helm**



**Helm**



**Skyounge Seating**

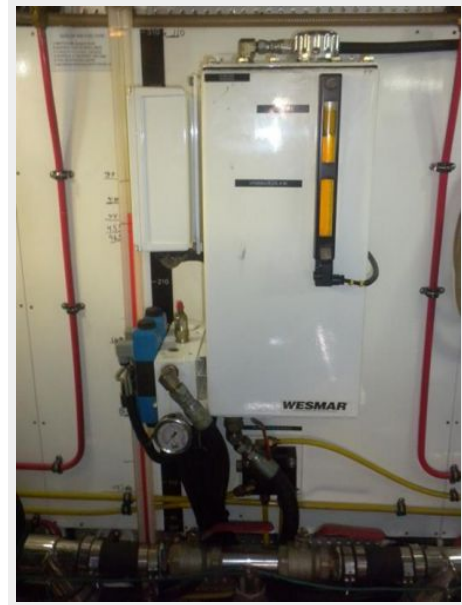




**UMT Davit 1000#**



**Wesmar Stabilizer Tank**



**Batteries/Fire System**



**Bateries**



**A/C Engine Room**



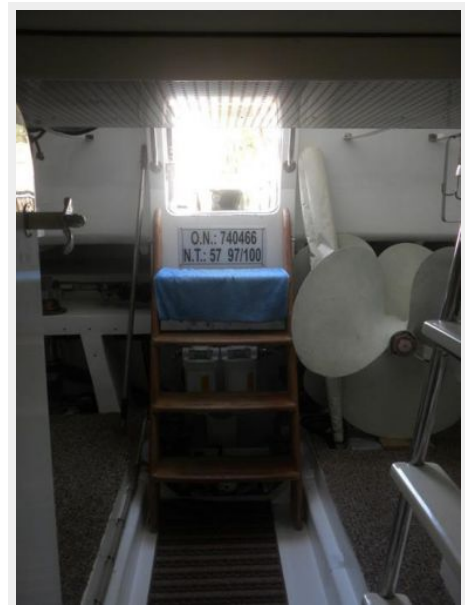
**Fuel Filters/Water Filter**



**Spare Props**



**Lazarette**



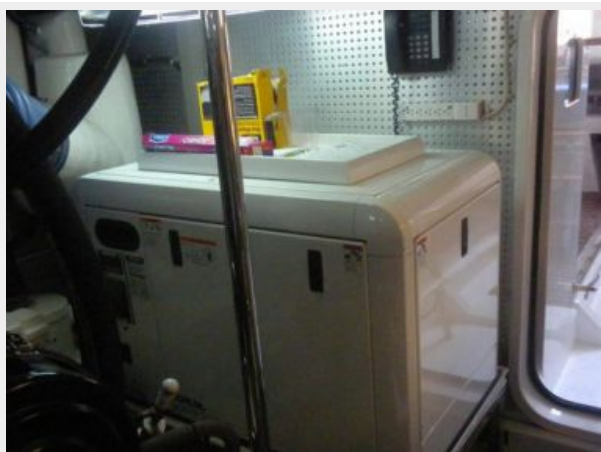
**Fuel Filters**



**Generator #1**



**Generator #2**



**Lazarette Storage**





**Watermaker 700gpd**



**Dual A/C Sea Water Pumps**



**Lazarette**



**Engine Room**



**Engine Room**



**Engine Room**



**Engine Hours****Transom****Aft View****Bow View**



# CONTACTS

---

Andrey Shestakov, leading yacht broker of the sales department of Shestakov Yacht Sales Inc. Shestakov Yacht Sales Inc., the official representative of the Miami/Fort Lauderdale FL headquarters.

## Contact details

---

Email:  
**andrey@shestakovyachtsales.com**

Web: [shestakovyachtsales.com/en/](http://shestakovyachtsales.com/en/)

## Telephones

---

USA: **+1(954)274-4435**

## Office hours

---

Monday – Saturday: **9:00 - 21:00 EDT**

Sunday: **closed**

## Address

---



Harbour Towne Marina, 850 NE 3rd St,  
STE 213, Dania, FL 33004