

EVVIVA — WESTPORT



Builder: WESTPORT

Year Built: 2006

Model: Motor Yacht

Price: PRICE ON APPLICATION

Location: United States

LOA: 164' 0" (49.99m)

Beam: 30' 10" (9.40m)

Max Draft: 7' 6" (2.29m)

Cruise Speed: 22 Kts. (25 MPH)

Max Speed: 25 Kts. (29 MPH)

Our experienced yacht broker, Andrey Shestakov, will help you choose and buy a yacht that best suits your needs **Evviva — WESTPORT** from our catalogue. Presently, at Shestakov Yacht Sales Inc., we have a wide variety of yachts available on our sale's list. We also work in close contact with all the big yacht manufacturers from all over the world.

If you would like to buy a yacht **Evviva — WESTPORT** or would like help answering any questions concerning purchasing, selling or chartering a yacht, please call **+1(954)274-4435**

TABLE OF CONTENTS

TABLE OF CONTENTS	2
SPECIFICATIONS	5
Basic Information	5
Dimensions	5
Speed, Capacities and Weight	5
Accommodations	5
Hull and Deck Information	6
Engine Information	6
PHOTOS	7
Evviva, Underway, Starboard	7
Sundeck - Helipad	7
Helicopter Landing Pad, Folding Hardtop	7
Foyer, Main Deck	7
Dining Room Aft View	7
Salon Aft View	7
Salon Fwd View	8
Dining Room, Close Up	8
Dinning Room, Serving Bar w/ Pop Up TV	8
Master Stateroom (main deck fwd)	8
Master Tub	8
Master Stateroom Head, his & hers	8
Master Office	9
Master Office 2	9
Aft Deck, Dining	9
Aft Deck, Dinning & Entertainment	9
VIP Stateroom - Bridge Deck	9
VIP Stateroom Starboard Aft View	9
VIP Head	10

VIP Stateroom Port Aft View	10
VIP Head Aft View	10
VIP Lounge	10
VIP Lounge Aft View	10
VIP Lounge Starboard	10
VIP Lounge Fwd	11
VIP Lounge Port	11
VIP Office	11
VIP Table	11
Model VIP Lounge	11
VIP Terrace	11
Bridge Deck - VIP Terrace	12
Bridge Deck, VIP Terrace, Dinning and Entertainment	12
Bridge Deck, VIP Terrace Aft	12
Sundeck, (folding hardtop for helicopter)	12
Sundeck, Dinette 2, Fwd	12
Sundeck, Dinette, 1	12
Forward Sundeck Lounge	13
Galley	13
Tender Stowage	13
Custom Westport 23' Diesel Tender	13
Tool and Equipment Room HVAC, Water Maker, etc.	13
Generator Control Room	13
Engine Room	14
Starboard Engine	14
Fuel Manifold	14
Foredeck Aft	14
Foredeck Fwd	14
Port Windlass	14

Portuguese Bridge	15
Portuguese Bridge Dinnete, Close Up	15
Helipad Aft View	15
Cruising Alaska, Stbd Beam	15
Cruising Alaska, Stern	15
Cruising Alaska, Stbd Stern Qtr	15
Cruising Alaska, Port Beam	16
CONTACTS	17
Contact details	17
Telephones	17
Office hours	17
Address	17

SPECIFICATIONS

Basic Information

Category: Motor Yacht

Sub Category: Tri-Deck

Model Year: 2006

Year Built: 2006

Country: United States

Cockpit: Yes

Helipad: Yes

Dimensions

LOA: 164' 0" (49.99m)

LWL: 142' 8" (43.48m)

Beam: 30' 10" (9.40m)

Max Draft: 7' 6" (2.29m)

Speed, Capacities and Weight

Cruise Speed: 22 Kts. (25 MPH)

Max Speed: 25 Kts. (29 MPH)

Displacement: 750000 Pounds

Gross Tonnage: 492 Pounds

Water Capacity: 2200 Gallons

Holding Tank: 1700 Gallons

Fuel Capacity: 18650 Gallons

Accommodations

Total Cabins: 6

Total Berths: 7

Sleeps: 12

Total Heads: 6

Captain Cabin: True

Crew Cabin: 5

Crew Berths: 10

Crew Sleeps: 12

Crew Heads: 6

Hull and Deck Information

Hull Material: Fiberglass

Deck Material: Teak

Hull Configuration: Modified Deep Vee

Hull Designer: Bill Garden

Interior Designer: Donald Starkey

Engine Information

Engines: 2

Manufacturer: MTU

Model: DDC 16v4000 M-90

Engine Type: Inboard

Fuel Type: Diesel

PHOTOS

Evviva, Underway, Starboard



Sundeck - Helipad



Helicopter Landing Pad, Folding Hardtop



Foyer, Main Deck



Dining Room Aft View



Salon Aft View



Salon Fwd View



Dining Room, Close Up



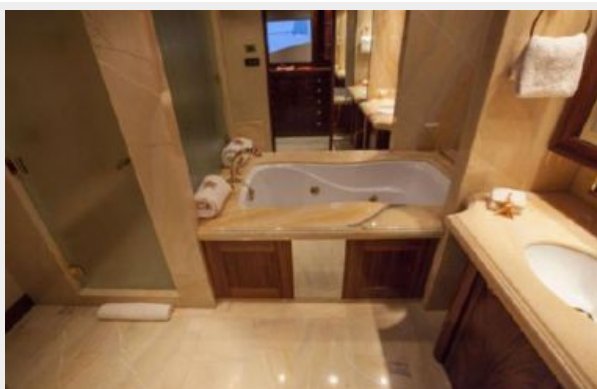
Dinning Room, Serving Bar w/ Pop Up TV



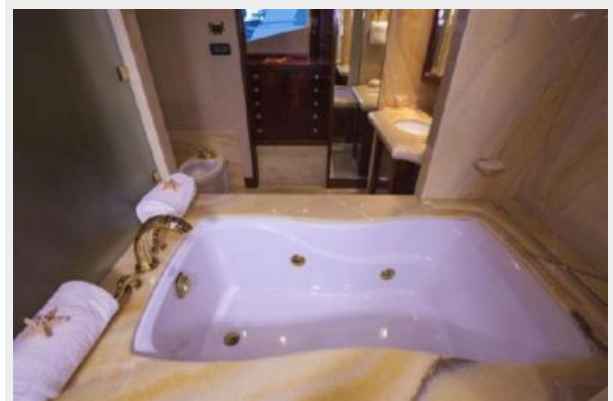
Master Stateroom (main deck fwd)



Master Stateroom Head, his & hers



Master Tub



Master Office



Master Office 2



Aft Deck, Dining



Aft Deck, Dining & Entertainment



VIP Stateroom - Bridge Deck



VIP Stateroom Starboard Aft View



VIP Stateroom Port Aft View



VIP Head



VIP Head Aft View



VIP Lounge



VIP Lounge Aft View



VIP Lounge Starboard



VIP Lounge Port



VIP Lounge Fwd



VIP Office



VIP Table



Model VIP Lounge



VIP Terrace



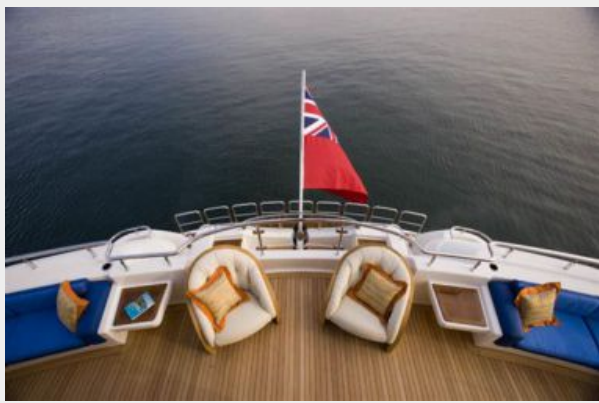
Bridge Deck - VIP Terrace



Bridge Deck, VIP Terrace, Dining and Entertainment



Bridge Deck, VIP Terrace Aft



Sundeck, (folding hardtop for helicopter)



Sundeck, Dinette 2, Fwd



Sundeck, Dinette, 1



Forward Sundeck Lounge



Galley



Tender Stowage



Custom Westport 23' Diesel Tender



Generator Control Room



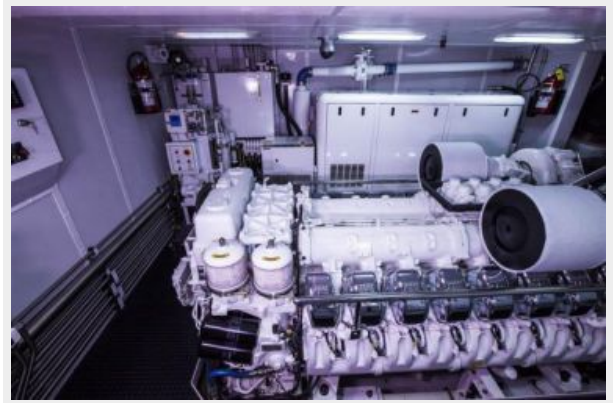
Tool and Equipment Room HVAC, Water Maker, etc.



Engine Room



Starboard Engine



Fuel Manifold



Foredeck Aft



Foredeck Fwd



Port Windlass



Portuguese Bridge



Portuguese Bridge Dinnete, Close Up



Helipad Aft View



Cruising Alaska, Stbd Beam



Cruising Alaska, Stbd Stern Qtr



Cruising Alaska, Stern



Cruising Alaska, Port Beam



CONTACTS

Andrey Shestakov, leading yacht broker of the sales department of Shestakov Yacht Sales Inc. Shestakov Yacht Sales Inc., the official representative of the Miami/Fort Lauderdale FL headquarters.

Contact details

Email: andrey@shestakovyachtsales.com

Web: shestakovyachtsales.com/en/

Telephones

USA: +1(954)274-4435

Office hours

Monday – Saturday: **9:00 - 21:00** EDT

Sunday: **closed**

Address



Harbour Towne Marina, 850 NE 3rd St,
STE 213, Dania, FL 33004