

## AGUHA — TIARA



**Builder:** TIARA

**Year Built:** 1999

**Model:** Motor Yacht

**Price:** PRICE ON APPLICATION

**Location:** Puerto Rico

**LOA:** 43' 0" (13.11m)

**Beam:** 15' 2" (4.62m)

**Max Draft:** 4' 5" (1.35m)

Our experienced yacht broker, Andrey Shestakov, will help you choose and buy a yacht that best suits your needs **AGUHA — TIARA** from our catalogue. Presently, at Shestakov Yacht Sales Inc., we have a wide variety of yachts available on our sale's list. We also work in close contact with all the big yacht manufacturers from all over the world.

If you would like to buy a yacht **AGUHA — TIARA** or would like help answering any questions concerning purchasing, selling or chartering a yacht, please call **+1(954)274-4435**

---

# TABLE OF CONTENTS

---

TABLE OF CONTENTS	2
SPECIFICATIONS	3
Basic Information	3
Dimensions	3
Speed, Capacities and Weight	3
Accommodations	3
Hull and Deck Information	3
Engine Information	3
DETAILED INFORMATION	4
Manufacturer Provided Description	4
Equipment List	4
Exclusions	4
Disclaimer	4
PHOTOS	6
Manufacturer Provided Image	10
CONTACTS	11
Contact details	11
Telephones	11
Office hours	11
Address	11

---

# SPECIFICATIONS

---

## Basic Information

---

**Category:** Motor Yacht

**Sub Category:** Convertible

**Model Year:** 1999

**Year Built:** 1999

**Country:** Puerto Rico

## Dimensions

---

**LOA:** 43' 0" (13.11m)

**Beam:** 15' 2" (4.62m)

**Max Draft:** 4' 5" (1.35m)

## Speed, Capacities and Weight

---

**Displacement:** 31500 Pounds

**Water Capacity:** 160 Gallons

**Holding Tank:** 60 Gallons

**Fuel Capacity:** 640 Gallons

## Accommodations

---

**Total Berths:** 6

## Hull and Deck Information

---

**Hull Material:** Fiberglass

## Engine Information

---

**Manufacturer:** Detroit Diesel

**Model:** 6V92

**Engine Type:** Inboard

**Fuel Type:** Diesel

---

# DETAILED INFORMATION

---

## Manufacturer Provided Description

---

Performance, comfort and excellence of construction make the Tiara 4300 Convertible a sport yacht for serious sportfishing or cruising. The 4300 Convertible has multiple capabilities. With 121 square feet of open cockpit space and all the fishing options available, this sport yacht appeals to every level of boating enthusiast. Entertain or just relax in the fully functional, fully equipped salon. From the breakfast bar to the coffee table, enjoy all of the comforts of home while cruising the open waters. Whether it's the use of biaxial glass or bonding bulkheads, the construction of the 4300 Convertible maximizes engineering accuracy, structural integrity, and overall strength and safety.

## Equipment List

---

Tiara 4300 Convertible Specifications - Standard Equipment Interior Details - Standard Plan A: a private side stateroom with over - under bunks, and an en suite private head - Optional Plan B: replaces the side stateroom with a dinette, with a choice of either a second head or a storage - utility closet Salon - Six-foot, seven-inch headroom - Large L-lounge sofa is convertible to a queen berth - High-low coffee - dining table - Entertainment center with TV, VCR, and AM-FM stereo system with CD player and Bose speakers - Breakfast bar open to the galley Galley - Sub-Zero refrigerator and matching freezer - Convection microwave - Three-burner electric stove - Built-in coffee maker - Blender - Instant hot water - Deep stainless sink with side drainer - Custom Fountainhead countertop, with plenty of drawer and cabinet space Owner's Stateroom - 12-foot, six-inch overall length - Queen-size pedestal bed, with storage under - TV - VCR - AM-FM Cassette stereo with speakers - Port - starboard hanging lockers Head - Vanity with sink, mirror and linen - towel storage - Separate fully enclosed shower Flybridge - Helm instrumentation is grouped into clusters, increasing visibility and providing over five sq. ft. of space for electronics - Navigation center includes chart display, and underneath cooler - Dual Pompanette helm seats - Forward lounge that seats four - Custom Pipewelders half tower, complete with 4-sided enclosure, aluminum handrails and ladder Cockpit - 121 sq. ft. of clean, unobstructed social or fish-fighting space - Standard bait prep center with freezer - Custom built-in engine room entry - Transom boarding door and gate

## Exclusions

---

Owner's personal belongings.

## Disclaimer

---

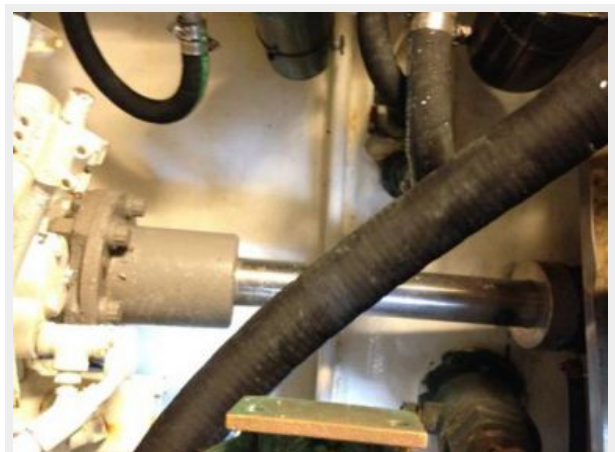
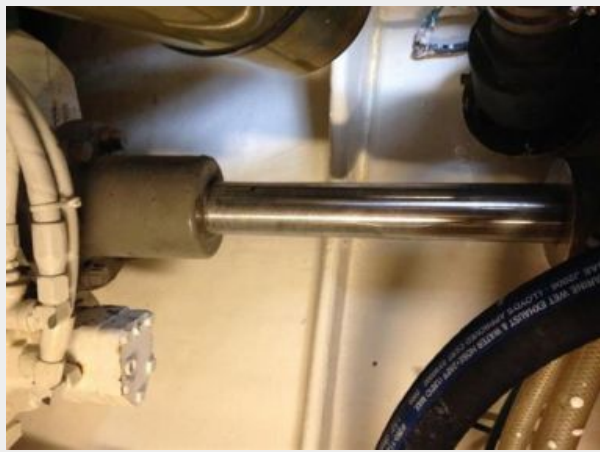
The Company offers the details of this vessel or yacht in good faith but cannot guarantee or

warrant the accuracy of this information nor warrant the condition of the vessel. A buyer should instruct his representatives, agents, or his surveyors, to investigate such details as the buyer desires validated. This vessel or yacht is offered subject to prior sale, price change, or withdrawal without notice.

# PHOTOS





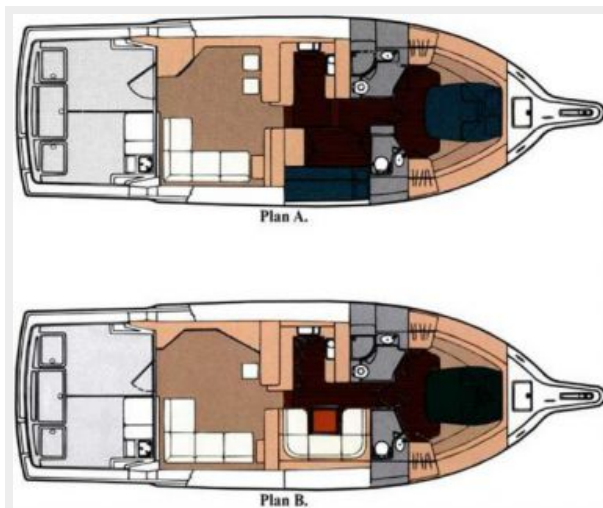








**Manufacturer Provided Image**



---

# CONTACTS

---

Andrey Shestakov, leading yacht broker of the sales department of Shestakov Yacht Sales Inc. Shestakov Yacht Sales Inc., the official representative of the Miami/Fort Lauderdale FL headquarters.

---

## Contact details

---

Email: [andrey@shestakovyachtsales.com](mailto:andrey@shestakovyachtsales.com)

Web: [shestakovyachtsales.com/en/](http://shestakovyachtsales.com/en/)

---

## Telephones

---

USA: +1(954)274-4435

---

## Office hours

---

Monday – Saturday: **9:00 - 21:00** EDT

Sunday: **closed**

---

## Address

---



Harbour Towne Marina, 850 NE 3rd St,  
STE 213, Dania, FL 33004