

RICKY MIX — SEA RAY



Судостроитель: [SEA RAY](#)

Год постройки: 2013

Модель: Моторная яхта

Цена: **ЦЕНА ЯХТЫ ПО ЗАПРОСУ**

Местонахождение: United States

Длина общая: 41' 5" (12.62m)

Ширина: 13' 0" (3.96m)

Макс. осадка: 3' 8" (1.12m)

Купить **RICKY MIX — SEA RAY** а также выбрать подходящую вам яхту из нашего каталога яхт вам поможет опытный яхтенный брокер Андрей Шестаков. На сегодняшний день компания **Shestakov Yacht Sales Inc.** имеет большое количество яхт в собственном списке продаж, а также тесно сотрудничает со всеми крупными яхтенными производителями по всему миру.

Для того чтобы купить яхту **RICKY MIX — SEA RAY** а также проконсультироваться по любому вопросу связанному с покупкой, продажей, чартером яхт позвоните по телефону **+7(918)465-66-44**.

ОГЛАВЛЕНИЕ

ОГЛАВЛЕНИЕ	2
ХАРАКТЕРИСТИКИ	5
Основная информация	5
Размеры	5
Скорость, вместимость и масса	5
Размещение	5
Корпус и палуба	5
Информация о двигателе	5
ПОДРОБНОЕ ОПИСАНИЕ	6
Manufacturer Provided Description	6
Aft Head/Shower	6
AIR CONDITIONING / HEATING	6
CABIN FEATURES	6
CANVAS (SUNBRELLA)	7
CERTIFICATIONS	7
COCKPIT FEATURES	7
CONTROL STATION	8
Electrical systems	8
Electronics	9
Engine Room	9
FORWARD HEAD	9
FORWARD STATEROOM	9
Fuel System	10
Galley	10
Generator	10
HULL & DECK FEATURES	10
MID-BERTH	11
Mooring System	11

Propulsion	11
Salon	11
UNDERWATER GEAR	12
WASTE SYSTEMS	12
WATER SYSTEM	12
A brief statement:	12
Исключения	13
Отказ от ответственности	13
ФОТОГРАФИИ	14
Front Port View 3	14
Port View	14
Port Aft View	14
Front Port View	14
Front Port View 2	14
Port Aft View 2	14
Aft View	15
Stbd Side View 2	15
Stbd Side View	15
Stbd Aft View	15
Front View	15
Front View 2	15
Front View 3	16
Fwd Sun Pad	16
Port Deck View	16
Cockpit Seating	16
Aft Sun Pad w/Gates Closed	16
Aft Sun Pad w/ gates open	16
Cockpit Entertainment Center	17
Cockpit Sink	17

Cockpit Grill	17
Port Side Lounge Seating	17
Double Helm Chairs	17
Helm	17
Helm 2	18
Engine Hours 10/14	18
Electronic Shift/Trottle and Bow Thruster Joystick	18
Generator Hours 10/14	18
Salon Steps	18
Stbd Side Salon Sofa	18
Mid Cabin	19
Mid Cabin w/Table Open	19
Mid Cabin w/Table Open Side view	19
Guest Head	19
Galley at Port Side	19
Galley 2	19
Salon TV	20
Master Stateroom	20
Master TV	20
Master Head	20
Master Shower	20
Manufacturer Provided Image	20
КОНТАКТЫ	21
Контактная информация	21
Телефоны	21
Время работы	21
Адрес	21

ХАРАКТЕРИСТИКИ

Основная информация

Тип судна: Моторная яхта

Модельный год: 2013

Год постройки: 2013

Страна: United States

Размеры

Длина общая: 41' 5" (12.62m)

Ширина: 13' 0" (3.96m)

Макс. осадка: 3' 8" (1.12m)

Скорость, вместимость и масса

Водоизмещение: 22000 Pounds

Вместимость воды: 60 Gallons

Вместимость сточного бака: 42 Gallons

Объем топливного бака: 255 Gallons

Размещение

Всего коек: 4

Всего ком. состава: 1

Корпус и палуба

Материал корпуса: Fiberglass

Информация о двигателе

Двигатели: 2

Производитель: Cummins

Модель: QSB 425

Тип двигателя: Inboard

Тип топлива: Diesel

ПОДРОБНОЕ ОПИСАНИЕ

Manufacturer Provided Description

The 410 Sundancer is the very essence of a Sea Ray Sport Yacht. It is available in sport spoiler, open hardtop and enclosed hardtop versions, and can sleep six in a forward stateroom and convertible sofas in the salon and mid-berth. Two heads add convenience. A second stateroom with twin berths is available in place of the dinette. Zeus pod drives are optional.

Key Features

- Optional Zeus® propulsion with helm joystick & Skyhook® station keeper
- Optional open or enclosed fiberglass hardtop
- Kohler® 10.0 kW generator.
- 32,000 BTU zone-controlled air conditioning system.
- Sony® Stereo and CD with iPod® Connector.
- Sirius® satellite receiver with antenna (N/A outside N. America)
- Standard 32" flatscreen TV with remote DVD in salon
- Custom Sea Ray® thru-bolted stainless steel cleats.
- Standard innerspring mattress in master stateroom.
- Solid surface breakfast bar.

Aft Head/Shower

- Door, Privacy - Access from Salon
- Flooring, Tile
- Handrail, Stainless Steel
- Head, VacuFlush
- Robe Hook
- Storage, Medicine Cabinet - Mirrored
- Towel Ring
- Towels - Sea Ray
- Vanity w/Countertop, Sink, Faucet, Teak Accents & Storage Below

AIR CONDITIONING / HEATING

- Custom Integral Vent System
- Zone-Controlled Reverse Cycle System: (18,000 BTU)

CABIN FEATURES

- Blinds, Silver Alloy
- Carbon Monoxide Monitors
- Carpet - Marine Grade
- Carpet Runners, Interior
- Carpet Runners, Interior (Sunbrella)
- Curtains & Drape Trim
- Handrails
- Lighting, 12V Indirect
- Lighting, 12V Xenon
- Outlet & Switch Plates - Satin Nickel Finish
- Outlet, Phone
- Outlets, 120V GFI Protected
- Outlets, 12V Accessory
- Steps, Entryway - Teak w/Stainless-Steel Handrail
- Storage, In-Floor
- Wood Interior Finish - Cherry, Walnut or Rift Oak

CANVAS (SUNBRELLA)

- Aft Curtain
- Bimini Top
- Extended Cockpit Top
- Canvas Colors - Blue
- Front Curtains
- Side Curtains

CERTIFICATIONS

- Meets Applicable USCG & ABYC Standards
- NMMA Yacht Certification

COCKPIT FEATURES

- Beverage Holders (10)
- Carpet Liner, Snap-In - Cockpit
- Door, Cabin Entry, Lockable
- Door, Transom Plex w/Stainless- Steel Frame & Arctic Insert
- Floor Liner, Fiberglass
- Handrails, 316 Stainless Steel
- Hatch, Engine Room
- Ice Bucket, Insulated: Built-In

- Ice maker, 120V
- Lighting, Indirect
- Outlet, 120V GFI Protected
- Outlet, 12V Accessory
- Rod Holders (2)
- Seating, Double-Wide Helm
- Seating, Lounger - Port Side w/ Molded-In Step
- Seating, U-Shaped
- Ship's Bell
- Sport Spoiler, Molded Fiberglass w/Overhead Lighting
- Steps, Boarding
- Storage, Side Panels
- Table, Cockpit
- Wet Bar w/Sink, Faucet, Solid-Surface Countertop, Stainless-Steel Handrail, Trash Receptacle & Carry-On Cooler w/Storage – Port

CONTROL STATION

- Alarms, High-Water: Bilge & Cabin
- Compass, Dash
- Dash, Gel Coated - Arctic White
- Digital Cockpit Remote Control for Sony Stereo
- Emergency Start System
- Horns, Air: (Concealed) - Dual Trumpet
- Instrument Panel: High-Gloss
- Power Steering, Hydraulic w/Wood Accent Isotta Tilt Wheel
- SmartCraft Diagnostics
- SmartCraft Digital Throttle & Shift (DTS)
- SmartCraft VesselView Display
- Switches, Illuminated

Electrical systems

- Batteries (4): w/Trays
- Battery Charger/Converter: 120V/40 Amp/12V
- Battery Solenoid Switches, 12V (2)
- Cable TV System
- Galvanic Isolators (2)
- Panel, Circuit Breaker
- Panel, DC Main Breaker
- Panel, Main Distribution - AC
- Panel, Main Distribution - DC

- Shore Power, Dual 120V/30Amp: w/50' Cords
- Wiring, Color-Coded

Electronics

- 2- E120 Raymarine Displays
- 4kw Open Array Antenna
- Electronics Circuit, 12V/50 Amp
- VHF Radio w/Remote Speaker & 8 Fiberglass Antenna

Engine Room

- Bilge Pumps, 12V
- Bilge Pumps, 12V (2)
- Blowers, 12V Bilge (2)
- Fire Suppression system - FM200 - Automatic
- Gel-Coated Engine Room
- Insulation, Engine Room - 2"
- Lighting, 12V

FORWARD HEAD

- Bathroom Tissue Holder
- Door, Acrylic Shower
- Door, Privacy - Access from Forward Stateroom
- Floor, Tile
- Handrails, Stainless Steel
- Head, VacuFlush®
- Power Vent, 12V
- Shower w/Seat & Adjustable Shower Wand & Dedicated Shampoo Bottle Storage
- Storage, Medicine Cabinet - Mirrored
- Towels - Sea Ray
- Vanity w/Countertop, Sink, Faucet, Teak Accents & Storage Below

FORWARD STATEROOM

- Bed, Full-Size Island-Style, Electrically Actuated Extension & Posturepedic® Backrest w/Visco Elastic Foam Mattress & Drawer Storage Below
- Decorative Rope Locker Bulkhead
- Door, Privacy - Handcrafted (Bi-Fold)

- Hanging Locker w/Light & Shelf - Starboard
- Hanging Locker, Mirrored w/Light & Shelf - Port
- Linens - Pillows, Sheets, Coordinated Spread
- Storage, Gunwhale Cabinets - Port & Starboard
- TV, Flatscreen w/DVD Player

Fuel System

- Fuel Filters, Racor® Filters
- Fuel Lines (USCG - Type A-1)
- Fuel Tanks, Aluminum w/Manual Valves & Float Style Sending Units

Galley

- Coffeemaker, 120V
- Countertop, Solid Surface w/Stainless- Steel Sink, Single-Lever Faucet: w/Pullout Spray Head & Solid- Surface Sink Cover
- Handrail, Stainless Steel
- Lighting, 12V
- Microwave: w/Stainless Steel Front - 120V
- Power Vent, 12V: w/Stainless Steel Grill
- Refrigerator/Freezer: w/Stainless-Steel Front - Dual Voltage
- Storage, Drawers
- Storage, Upper & Lower
- Stove, Two-Burner (Recessed) Black Glass Top w/Solid Surface Cover - 120V
- Trash Receptacle

Generator

- 9.0 kW Onan® Diesel w/SmartCraft Interfacing (120V/60 Cycle) wRemote Start, Muffler, Closed Cooling, Fuel Filter, Seacock & Seawater Strainer

HULL & DECK FEATURES

- Bow Rail
- Cleats, Custom Sea Ray (6) Thru-Bolted Stainless Steel
- Deck Fill Plates
- Gel Coat, Arctic White
- Graphics, Striping
- Handrails, 316 Stainless Steel

- Hatch, Deck Vent
- Hull Windows, Recessed - Fixed (1 Salon, 1 Galley)
- Lights, Navigation
- Portlights (3) Stainless Steel (1 Opening/Frosted, 2 Fixed)
- Resin, High-Performance Vinylester
- Rub Rail, PVC w/Stainless Steel Insert
- Skylight, Flush-Mounted w/ Retractable Sunshade
- Storage, Transom Wall
- Stringer System - Polyumac/ Fiberglass
- Swim Platform, Integral w/Concealed Stainless-Steel Four-Step Swim Ladder w/Integral Grab Handle
- Thru-Hull Fittings Stainless Steel
- Toe Rail: Molded Fiberglass - Deck
- Vent System, Engine Room
- Windshield Wipers: w/Delay & Speed Control
- Windshield, Tempered/Tinted - Curved Glass w/Aluminum Frame & Electric Front Vent

MID-BERTH

- Curtain, Privacy: w/Dedicated Storage
- Hanging Locker w/Light - Starboard
- Ottomans (2) Movable w/Dual Purpose Tops (Cushions or Cocktail Tables)
- Seating, Conversation Pit - Converts to Double Berth w/Flip-Out Base
- Storage, Cabinet
- Table, Dinette w/High-Gloss Wood Surface

Mooring System

- Anchor, Galvanized
- Anchor Chute, Stainless Steel
- Anchor Rope/Chain Storage w/Gas- Assisted Hatch
- Windlass, Rope/Chain w/Foot Switches

Propulsion

- T-V-Drive Cummins QSB 425 (T-407 php - 304 kW)

Salon

- Entertainment Center - Gaming System Port - iPod® Interface w/Docking Station - MP3

Port w/12V Outlet - Stereo, Sony® 12V AM/FM Single CD, Sirius® Satellite Receiver w/ Antenna, Amplifier, Subwoofer, Speakers (4 Cabin, 4 Cockpit) & Speaker Selector Switches - TV, 32-inch Flatscreen LCD (120V) w/Remote DVD Player

- Salon Accent Pillows
- Seating, Sofa w/Storage Below -Converts to Bed w/Filler Cushions (Ultraleather)
- Storage, Gunwale Cabinets

UNDERWATER GEAR

- Bonding System
- Propeller Shafts, 1.5": Stainless Steel (2) - Aquamet 19
- Propellers, Nibral 4-Blade Cup
- Rudders, Manganese-Bronze w/Stainless Steel Posts
- Seacocks
- Seawater Strainers
- Shaft Logs, Dripless
- Struts, Manganese-Bronze
- Trim Tabs, Hydraulic

WASTE SYSTEMS

- Head System, VacuFlush
- Holding Tank
- Holding Tank Level Indicators
- Sump Box

WATER SYSTEM

- Freshwater Washdown Spigot - Anchor Washdown & Transom
- Manifold System
- Pressure Water System
- Shower, Cockpit - Single-Lever Hot & Cold w/Stainless-Steel Door, Braided Hose & Ergonomic Shower Wand
- Water Heater, (6-Gallon): 120V
- Water Inlet, Dockside

A brief statement:

Not all accessories shown or described herein are standard equipment or even available as options. Some features and options may not be available when a boat is built for outside North

America and/or has CE Certification. Options and features are subject to change without notice. Not all model-year boats may contain all the features or meet the specifications described herein. Confirm availability of all accessories and equipment with an authorized Sea Ray dealer prior to purchase.

Исключения

При продаже яхты исключаются личные вещи владельца.

Отказ от ответственности

Компания предоставляет описание судна или яхты добросовестно, но не может гарантировать точность этой информации, а также не ручается за техническое состояние. Покупатель должен проинструктировать своих агентов или оценщиков исследовать представленную информацию более подробно, по собственному желанию. Продажа судна или яхты, изменение цены или снятие с продажи будет происходить без предварительного уведомления.

ФОТОГРАФИИ

Front Port View 3



Port View



Port Aft View



Front Port View



Front Port View 2



Port Aft View 2



Aft View



Stbd Side View 2



Stbd Side View



Stbd Aft View



Front View



Front View 2



Front View 3



Fwd Sun Pad



Port Deck View



Cockpit Seating



Aft Sun Pad w/Gates Closed



Aft Sun Pad w/ gates open



Cockpit Entertainment Center



Cockpit Sink



Cockpit Grill



Port Side Lounge Seating



Double Helm Chairs



Helm



Helm 2



Engine Hours 10/14



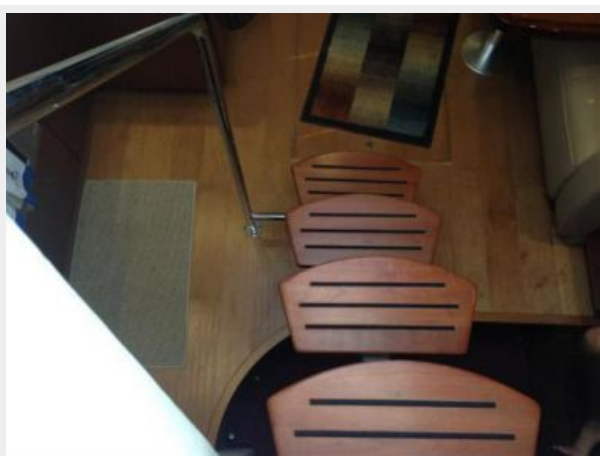
Generator Hours 10/14



Electronic Shift/Trottle and Bow Thruster Joystick



Salon Steps



Stbd Side Salon Sofa



Mid Cabin



Mid Cabin w/Table Open



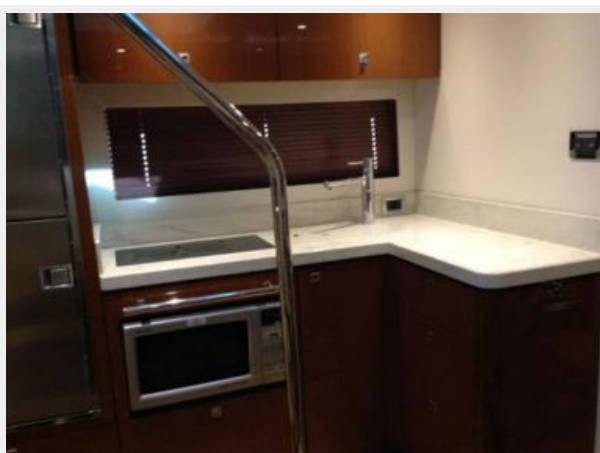
Mid Cabin w/Table Open Side view



Guest Head



Galley at Port Side



Galley 2



Salon TV



Master Stateroom



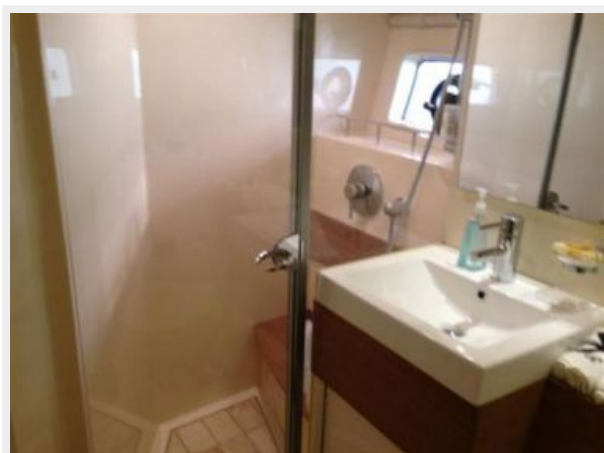
Master TV



Master Head



Master Shower



Manufacturer Provided Image



КОНТАКТЫ

Андрей Шестаков (Andrey Shestakov) – ведущий яхтенный брокер отдела продаж яхт и судов компании Shestakov Yacht Sales Inc. Официальный представитель Shestakov Yacht Sales Inc. для русскоговорящих клиентов в центральном офисе компании в Майами/Форт Лодердейл/Флорида/США.

Контактная информация

Email: andrey@shestakovyachtsales.com

Web: shestakovyachtsales.com

Телефоны

Краснодарский край: **+7(918)465-66-44**

США, Майами, Флорида: **+1(954)274-4435**

Время работы

Понедельник – Суббота: **9:00 - 21:00**
EDT

Воскресенье: **Закрито**

Адрес



Harbour Towne Marina, 850 NE 3rd St,
STE 213, Dania, FL 33004