

SEARINGE — TIARA



Builder: TIARA

Year Built: 2004

Model: Cruiser

Price: PRICE ON APPLICATION

Location: United States

LOA: 35' 0" (10.67m)

Beam: 13' 3" (4.04m)

Max Draft: 3' 4" (1.02m)

Our experienced yacht broker, Andrey Shestakov, will help you choose and buy a yacht that best suits your needs **Seeringe — TIARA** from our catalogue. Presently, at Shestakov Yacht Sales Inc., we have a wide variety of yachts available on our sale's list. We also work in close contact with all the big yacht manufacturers from all over the world.

If you would like to buy a yacht **Seeringe — TIARA** or would like help answering any questions concerning purchasing, selling or chartering a yacht, please call **+1(954)274-4435**

TABLE OF CONTENTS

TABLE OF CONTENTS	2
SPECIFICATIONS	3
Basic Information	3
Dimensions	3
Speed, Capacities and Weight	3
Accommodations	3
Hull and Deck Information	3
Engine Information	4
DETAILED INFORMATION	5
General Description	5
Exclusions	5
Disclaimer	5
PHOTOS	6
CONTACTS	18
Contact details	18
Telephones	18
Office hours	18
Address	18

SPECIFICATIONS

Basic Information

Category: Cruiser

Model Year: 2004

Year Built: 2004

Country: United States

Dimensions

LOA: 35' 0" (10.67m)

Beam: 13' 3" (4.04m)

Max Draft: 3' 4" (1.02m)

Speed, Capacities and Weight

Displacement: 14000 Pounds

Water Capacity: 70 Gallons

Holding Tank: 30 Gallons

Fuel Capacity: 360 Gallons

Accommodations

Total Cabins: 1

Total Berths: 5

Total Heads: 1

Hull and Deck Information

Hull Material: Fiberglass

Engine Information

Engines: 2

Manufacturer: Cummins

Model: 6BTA 5.9

Engine Type: Inboard

Fuel Type: Diesel

DETAILED INFORMATION

General Description

A boat length in the mid-30 foot range is a comfortable size. It's not too big that owners will need a crew to handle it, and it's spacious enough to accommodate more than a few friends. Lighting is another thing that increases the perception of space. In addition to three overhead hatches in the cabin, plus portlights along the sides, recessed fixtures provide a soft wash of indirect illumination. The cabin of the 3500 has a generous amount of stowage space. There's a full galley with cabinets to store a cruise's worth of supplies plus all cooking utensils. And when the cooking and cleanup is done, the stove hides away under a filler panel so the counter space can be used for other purposes. Also, a Pullman berth comes out of the backrest of the dinette seat. The exterior look of the 3500 Open is low and sleek, creating a perception of flowing length. The good looks and comfortable space of the 3500 Open are coupled with impressive performance, too. Its modified-V hull has an 18-degree deadrise, so it will take rough weather in stride. With its diesel power, the 3500 Open can coax a 380-mile-plus range at cruising speed from its 352-gallon tank.

Exclusions

Owner's personal belongings.

Disclaimer

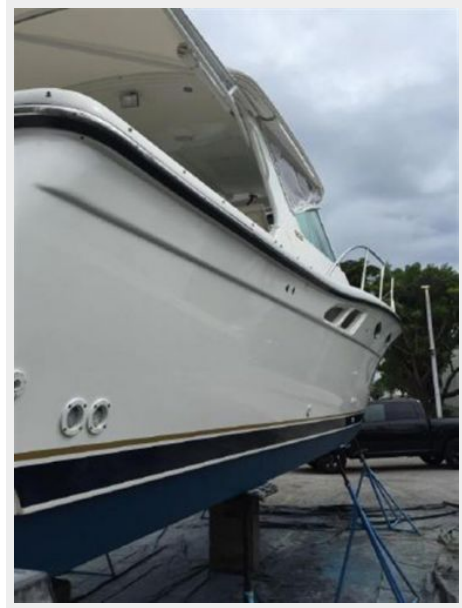
The Company offers the details of this vessel or yacht in good faith but cannot guarantee or warrant the accuracy of this information nor warrant the condition of the vessel. A buyer should instruct his representatives, agents, or his surveyors, to investigate such details as the buyer desires validated. This vessel or yacht is offered subject to prior sale, price change, or withdrawal without notice.

PHOTOS







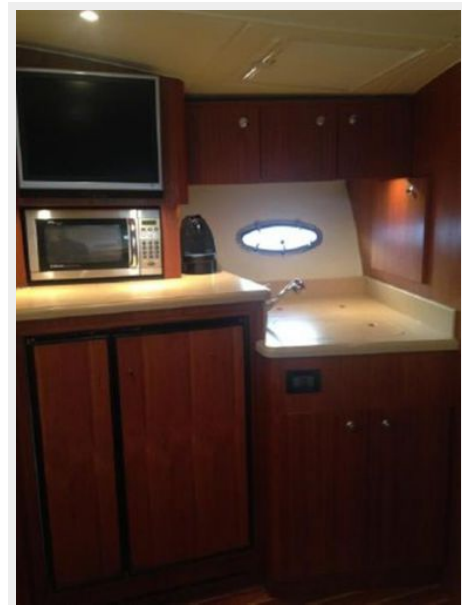
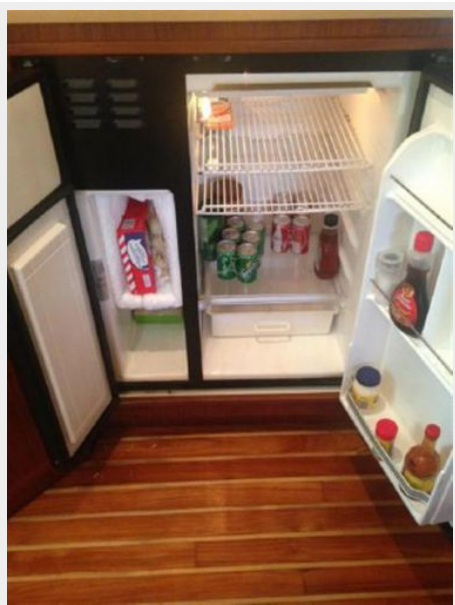
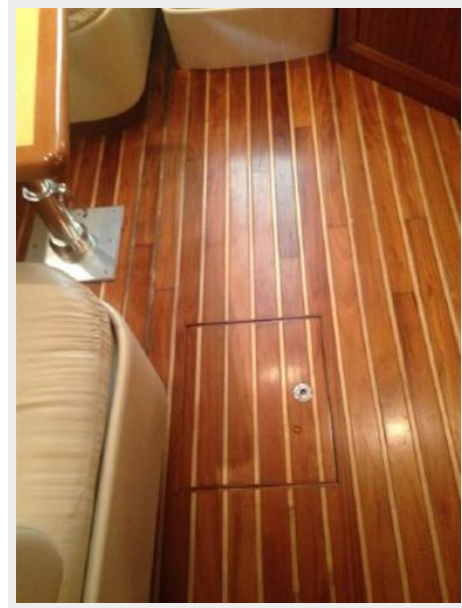


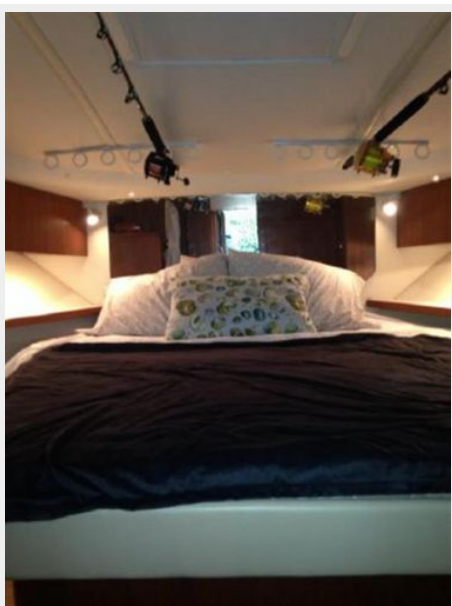
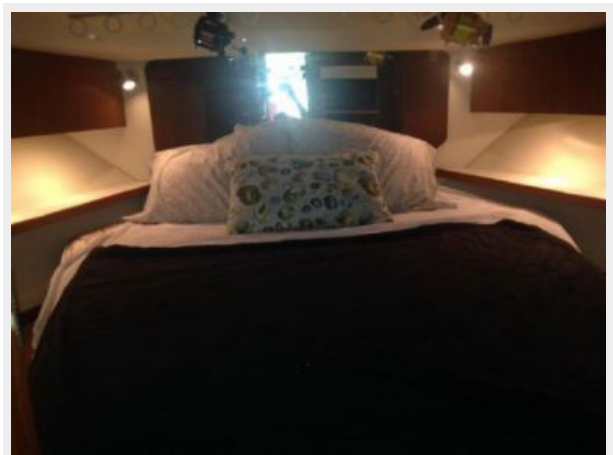
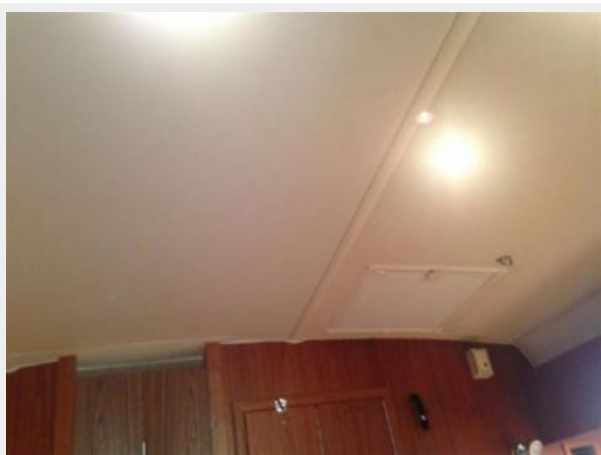


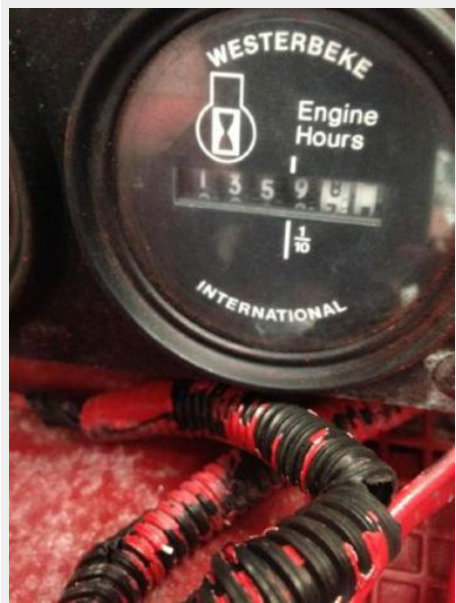














CONTACTS

Andrey Shestakov, leading yacht broker of the sales department of Shestakov Yacht Sales Inc. Shestakov Yacht Sales Inc., the official representative of the Miami/Fort Lauderdale FL headquarters.

Contact details

Email: andrey@shestakovyachtsales.com

Web: shestakovyachtsales.com/en/

Telephones

USA: +1(954)274-4435

Office hours

Monday – Saturday: **9:00 - 21:00** EDT

Sunday: **closed**

Address



Harbour Towne Marina, 850 NE 3rd St,
STE 213, Dania, FL 33004