

68FT 2004 SUNSEEKER PREDATOR 68 — SUNSEEKER



Builder: SUNSEEKER

Year Built: 2004

Model: Motor Yacht

Price: PRICE ON APPLICATION

Location: Puerto Rico

LOA: 68' 0" (20.73m)

Beam: 17' 1" (5.21m)

Max Draft: 4' 8" (1.42m)

Cruise Speed: 27 Kts. (31 MPH)

Max Speed: 35 Kts. (40 MPH)

Our experienced yacht broker, Andrey Shestakov, will help you choose and buy a yacht that best suits your needs 68ft 2004 Sunseeker Predator 68 — SUNSEEKER from our catalogue. Presently, at Shestakov Yacht Sales Inc., we have a wide variety of yachts available on our sale's list. We also work in close contact with all the big yacht manufacturers from all over the world.

If you would like to buy a yacht 68ft 2004 Sunseeker Predator 68 — SUNSEEKER or would like help answering any questions concerning purchasing, selling or chartering a yacht, please call +1(954)274-4435

TABLE OF CONTENTS

TABLE OF CONTENTS	2
SPECIFICATIONS	3
Basic Information	3
Dimensions	3
Speed, Capacities and Weight	3
Accommodations	3
Hull and Deck Information	3
Engine Information	4
DETAILED INFORMATION	5
Manufacturer Provided Description	5
Exclusions	5
Disclaimer	5
PHOTOS	6
CONTACTS	16
Contact details	16
Telephones	16
Office hours	16
Address	16

SPECIFICATIONS

Basic Information

Category: Motor Yacht

Model Year: 2004

Year Built: 2004

Country: Puerto Rico

Dimensions

LOA: 68' 0" (20.73m)

LWL: 53' 3" (16.23m)

Beam: 17' 1" (5.21m)

Max Draft: 4' 8" (1.42m)

Clearance: 15' 4" (4.67m)

MFG Length: 69' 6" (21.18m)

Speed, Capacities and Weight

Cruise Speed: 27 Kts. (31 MPH)

Cruise Speed RPM: 2000 Kts.

Max Speed: 35 Kts. (40 MPH)

Max Speed RPM: 2400 Kts.

Displacement: 66140 Pounds

Water Capacity: 185 Gallons

Fuel Capacity: 1030 Gallons

Accommodations

Total Berths: 6

Total Heads: 3

Hull and Deck Information

Hull Material: Fiberglass

Engine Information

Engines: 2

Manufacturer: MAN

Model: D2842 LE404

Engine Type: Inboard

Fuel Type: Diesel

DETAILED INFORMATION

Manufacturer Provided Description

The elegant Sunseeker Predator 68 offers a comfortable cruising range, with impressive top speeds and a superb levels of handling and performance. Apart from offering spacious entertainment and accommodation areas, she also contains ample storage facilities. A choice of cockpit and garage configurations will enable owners to enjoy the expanded cockpit, or a garage with space for a large twin-jet tender as well as a jet-ski on the extended bathing platform.

Exclusions

Owner's personal belongings.

Disclaimer

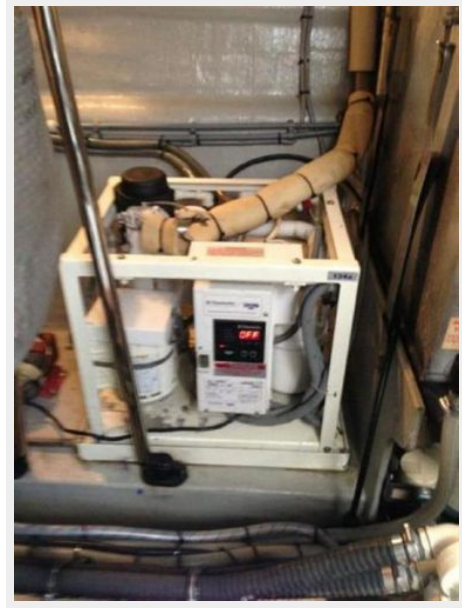
The Company offers the details of this vessel or yacht in good faith but cannot guarantee or warrant the accuracy of this information nor warrant the condition of the vessel. A buyer should instruct his representatives, agents, or his surveyors, to investigate such details as the buyer desires validated. This vessel or yacht is offered subject to prior sale, price change, or withdrawal without notice.

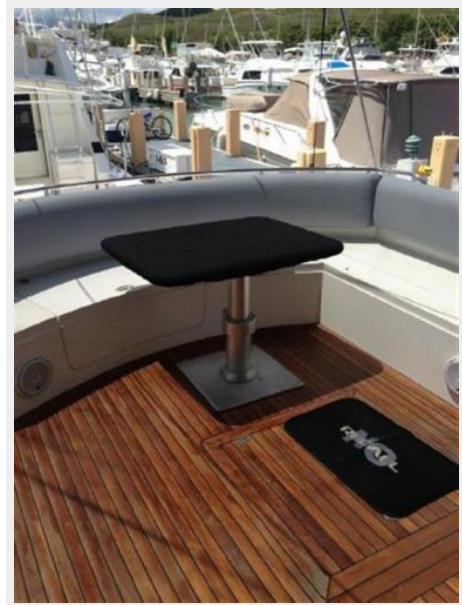
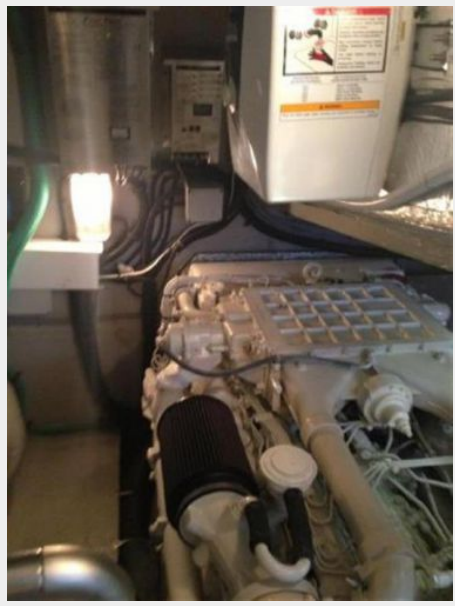
PHOTOS

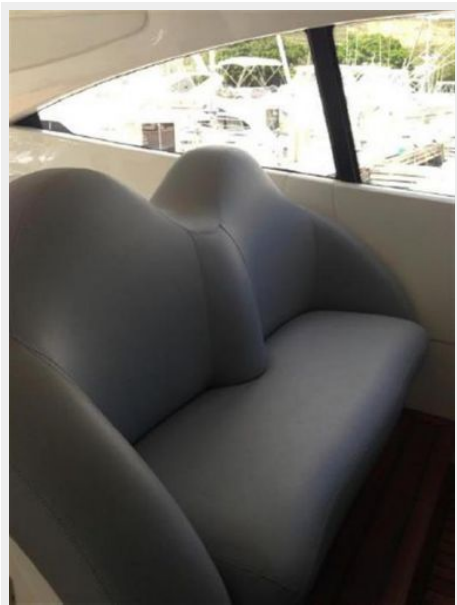




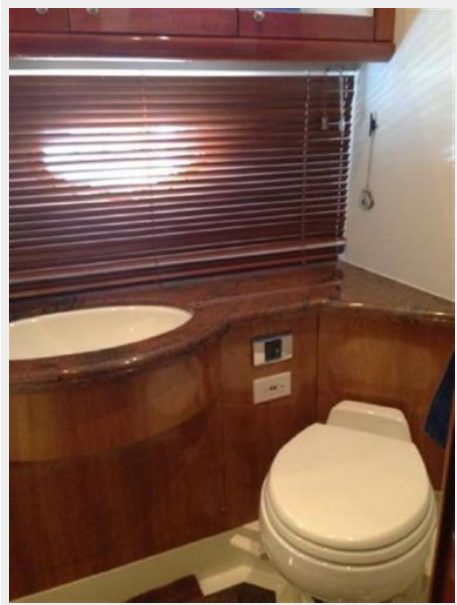


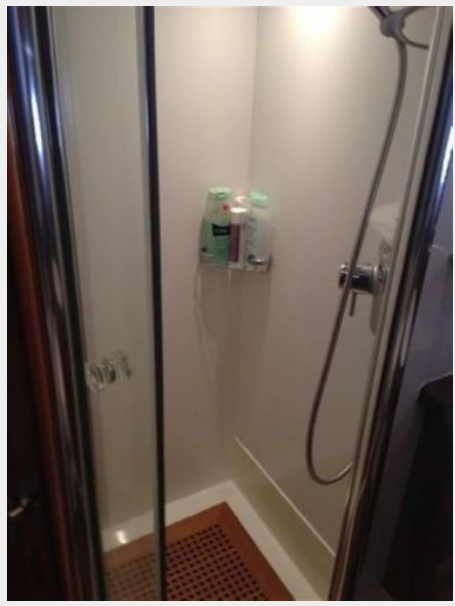














CONTACTS

Andrey Shestakov, leading yacht broker of the sales department of Shestakov Yacht Sales Inc. Shestakov Yacht Sales Inc., the official representative of the Miami/Fort Lauderdale FL headquarters.

Contact details

Email: andrey@shestakovyachtsales.com

Web: shestakovyachtsales.com/en/

Telephones

USA: +1(954)274-4435

Office hours

Monday – Saturday: **9:00 - 21:00** EDT

Sunday: **closed**

Address



Harbour Towne Marina, 850 NE 3rd St,
STE 213, Dania, FL 33004