

## MONKEY BUSINESS — SPENCER YACHTS



**Builder:** SPENCER YACHTS

**LOA:** 64' 0" (19.51m)

**Year Built:** 2003

**Model:** Sport Fisherman

**Price:** PRICE ON APPLICATION

**Location:** United States

Our experienced yacht broker, Andrey Shestakov, will help you choose and buy a yacht that best suits your needs **MONKEY BUSINESS — SPENCER YACHTS** from our catalogue. Presently, at Shestakov Yacht Sales Inc., we have a wide variety of yachts available on our sale's list. We also work in close contact with all the big yacht manufacturers from all over the world.

If you would like to buy a yacht **MONKEY BUSINESS — SPENCER YACHTS** or would like help answering any questions concerning purchasing, selling or chartering a yacht, please call **+1(954)274-4435**

# TABLE OF CONTENTS

---

|                                   |    |
|-----------------------------------|----|
| TABLE OF CONTENTS                 | 2  |
| SPECIFICATIONS                    | 4  |
| Overview                          | 4  |
| Basic Information                 | 4  |
| Dimensions                        | 4  |
| Accommodations                    | 4  |
| Hull and Deck Information         | 4  |
| Engine Information                | 5  |
| DETAILED INFORMATION              | 6  |
| Salon                             | 6  |
| Galley                            | 6  |
| Companionway                      | 7  |
| Master Stateroom And Ensuite Head | 7  |
| VIP Stateroom, Port               | 9  |
| Guest Stateroom                   | 10 |
| Deck And Hull                     | 11 |
| Tower                             | 12 |
| Electronics And Navigation        | 12 |
| Engine and Mechanical             | 13 |
| Exclusions                        | 14 |
| Disclaimer                        | 14 |
| Exclusions                        | 14 |
| Disclaimer                        | 14 |
| PHOTOS                            | 15 |
| CONTACTS                          | 24 |
| Contact details                   | 24 |
| Telephones                        | 24 |
| Office hours                      | 24 |

---

Address

24

---

# SPECIFICATIONS

---

## Overview

---

Spencer Yachts 64 MONKEY BUSINESS With Twin CAT 3412E 1400 hp Engines With 2056 Hours, PipeWelders Full Tuna Tower, 3 Stateroom and 3 Head Layout with the Master Forward, Washer And Dryer, Sub Zero Refrigeration and Freezer Drawers, 800 gpd Sea Recovery Water Maker, Eskimo Ice Maker, Release Marine Fighting Chair With Rocket Launcher And More! Please Call to Schedule Your Personal Showing in NC.

## Basic Information

---

**Category:** Sport Fisherman

**Sub Category:** Convertible

**Model Year:** 2003

**Year Built:** 2003

**Country:** United States

**Fly Bridge:** Yes

**Cockpit:** Yes

## Dimensions

---

**LOA:** 64' 0" (19.51m)

## Accommodations

---

**Total Cabins:** 3

## Hull and Deck Information

---

**Hull Material:** Wood

---

## Engine Information

---

**Engines:** 2

**Manufacturer:** Caterpillar

**Model:** 3412E

**Engine Type:** Inboard

**Fuel Type:** Diesel

---

## DETAILED INFORMATION

---

### Salon

---

Custom L-Shaped Sofa To Port With Custom Storage Beneath

Barrel Chairs

Cherry and Birdseye Maple Table With Storage Beneath

Starboard Custom Cabinetry With Raised Panel Cherry Doors

U-Line Ice Maker

Custom Liquor And Wine Storage

Entertainment Center With RTI Master Remote

- Sony DVD/CD/Video CD
- Sony Digital Audio/Video Control Center
- Sony Digital Satellite Receiver
- Sony 5-Disc CD Changer
- Sony SAT Radio Control
- RUSSOUND CA6.4I 6 Zone - 4 Source Central Controller / Amplifier

Electrical Panel Housed in Starboard Custom Cabinetry

Cherry Valances

Custom Covered Lambrequins

Custom Blinds

Brushed Nickel Hardware

Four (4) Ceiling Speakers

### Galley

---

The Galley is to Port with full Raised Panel Cherry cabinetry and Cherry and Maple Birdseye flooring.

Solid Surface Corian Counter Tops

Sub Zero Refrigeration and Freezers Drawers (4 Total) Beneath Counter - 2 Drawers Refrigeration And 2 Drawers Freezer Storage

GE Profile Convection Microwave Oven Behind Upper Cabinet Doors

Black and Decker Coffee Maker Behind Upper Cabinet Door

Ceran Princess Two (2) Burner Cooktop With Lift-up Corian Cover

Large and Deep Galley Sink with Moen Faucet

Brushed Nickel Hardware

GE Profile Trash Compactor

Water Tank Gauges In Cabinetry Beneath Galley Sink

Custom Storage Drawers for Dinner Plates and Cup Storage

Ample Cabinetry For Storage

---

## Companionway

---

The companionway features Cherry tread steps which lift up for storage beneath, four (4) overhead lights with access to all cabins as well as the Linen Closet and Laundry Center.

Cedar Lined Linen Closet

SMX AC Controls for Galley And Salon

Bosch Axxis Front Load Washer & Dryer

Brushed Nickel Hardware

Central Vacuum Hookup

Four (4) Overhead Lights

Cherry Stairs

Carpeting Along Passageway

---

## Master Stateroom And Ensuite Head

---

The Master Stateroom is Forward with an athwartship queen berth with His And Hers cedar-lined closets. The Master flat screen television is behind the vanity mirror centered between the His And Her hanging closets.

Large Queen Walk Around Berth With New Custom Mattress in 2013, Berth Lifts up For Storage Beneath And Access Ladder To Bilge Area

Cherry side cabinets

(2)Two cedar lined hanging lockers

Brushed nickel hardware

Magnetic door stops

Overhead lights

Ceiling speakers

Reading lights

Bomar hatch with screen and shade

Mirrored head board

Sony digital satellite receiver

Sony DVD/CD/Video

Sharp flat screen Aquos TV

Entertainment center is hidden behind mirror

Ample Storage

SMX AC controls

AC outlets

RTI remote sensor for entertainment center

The Master Stateroom head is roomy with a large walk in shower with a beautiful custom shower door. The flooring is a Cherry and Birdseye Maple and the countertops are solid surface Corian.

Mirrored ceiling

Overhead lights

Solid surface Corian Tops

Large walk in shower

Raritan Head

Delta sink faucet

Cherry and Birdseye Maple flooring



Exhaust fan

Undercounter water shut offs

Brushed nickel hardware

Sink

Cherry Cabinets

Storage for towels and supplies

---

## VIP Stateroom, Port

---

The VIP guest cabin is located to port. This stateroom features a double berth with storage below, cedar lined hanging locker, entertainment center and private access to the guest head. There is also a large overhead storage area for dry goods or bulky items.

Double Berth

SMX AC Controls

Mirror on locker door

Overhead lights

RTI remote sensor for entertainment

Carpet

Brushed nickel hardware

Large cedar lined hanging locker

Ceiling speakers

SONY Triniton TV

"Attic" access

Access to ensuite head with shower: The VIP guest head features mirrored overhead ceiling, Cherry and Birdseye maple flooring and Corian countertops and sink. The private head has access only from the stateroom.

Exhaust fan

Undercounter water shut offs

Brushed nickel hardware

Corian sink

Cherry cabinets

Storage for towels and supplies

Mirrored cabinet door

Mirrored ceiling

(4) Overhead lights

Solid surface Corian Tops

Large walk-in shower

Raritan Head

Delta faucet

Cherry and Birdseye Maple flooring

---

## Guest Stateroom

---

The guest stateroom is located to starboard and features upper/lower berths, cedar lined hanging locker and access to the semi-private guest head as well as the companionway.

Upper/lower bunks

Overhead lights

(2) Reading lights

Overhead speakers

RTI remote entertainment sensor

Mirror on locker door

SMX AC Controls

Private door to head

Large cedar lined hanging locker

Drawer storage under bottom bunk

Brushed nickel hardware

Carpet Starboard Guest Head:

This head is located forward of the stateroom on the starboard side. The flooring is a Cherry and Birdseye Maple and the counter tops are solid surface Corian. You can also enter this head from the stateroom.

Exhaust fan

Undercounter water shut offs

Brushed nickel hardware

Sink

Cherry Cabinets

(2) AC outlets

Private access from stateroom

Mirrored ceiling

Overhead lights

Solid surface Corian Tops

Large walk-in shower

Raritan Head

Mirror Cabinet doors

Delta faucet

Cherry and Birdseye Maple flooring

---

## Deck And Hull

---

Blue bottom paint, (bottom stripped 2011)

Matterhorn white paint

Blue accent stripe

Window mask painted (2011)

Both shafts replaced (2012)

Flush mounted trim tabs, trim tab seals replaced (2013)

Rudder ports replaced (2011)

Anchor locker in fordeck

Freshwater washdown in anchor locker

Fortress anchor in anchor locker

Steering ram rebuilt (2011)

ACR-100 spotlight

---

## **Tower**

---

PipeWelders full tuna tower

Engine start and stops in tower console

Molded hardtops and tower standing platform

Molded in navigation lights

Teaser reels with sliding door

Drop down electronics box

Three (3) sided enclosure (2011)

U-zip vents in enclosure

Rupp center rigger

---

## **Electronics And Navigation**

---

Twin Furuno NavNet 3-D screens (2011)

Furuno black box 72 mile radar (2011)

Furuno black box color sounder (2011)

Northstar 952X GPS plotter/back up

FLIR cameras (2011)

Simrad AP22 autopilot

Two (2) Icom 602 VHF radios

KVH Sat TV system (2013)

Spotlight control

CAT main engine ECM's

Furuno RD-30 (tower)

---

## Engine and Mechanical

---

Engine room access is in the cockpit port side of the salon door. Engine room has a pump room forward and aft is alleyway to the lazarette. The engine room is super clean and roomy. Second access to the engine room is in the galley floor to the pump room. The engine room has Awlgrip finish throughout. Most every hose and clamp have been updated over the last 24 months throughout this vessel.

Twin Caterpillar 3412E engines, 1400hp each with 2056 hours

Typical running speed 1840 rpm at 29 kts, 95 gph burn at 65% load

1900 rpm at 31 kts fuel burn 115 gph at 72% load

40 kts at wide open throttle

Main engines have turbos blueprinted, 2012

Westerbeke 20kw generator with 2183 hours

Engine room camera system

Racor main engines and generator fuel filters

Block heaters, main engines

Charles ISO boost system

Fireboy Fire System

Eskimo ice machine

Sea Recovery watermaker, 800GPD

Sea chest

Delta T air vents and fans

AC/DC lighting

Fuel transfer system

Water heater

Stingray saltwater washdown pump

Fuel site tubes

Dripless shaft logs

ZF engine

---

## Exclusions

---

Owners personal effects, fishing rods, reels, tackle, gear, tools, life raft and EPIRB are not included in inventory and will not convey at closing.

Owner's artwork on Salon starboard credenza and artwork located on Galley Island are not included in inventory and will not convey with vessel at closing.

---

## Disclaimer

---

The Company offers the details of this vessel in good faith but cannot guarantee or warrant the accuracy of this information nor warrant the condition of the vessel. A buyer should instruct his agents, or his surveyors, to investigate such details as the buyer desires validated. This vessel is offered subject to prior sale, price change, or withdrawal without notice.

---

## Exclusions

---

Owner's personal belongings.

---

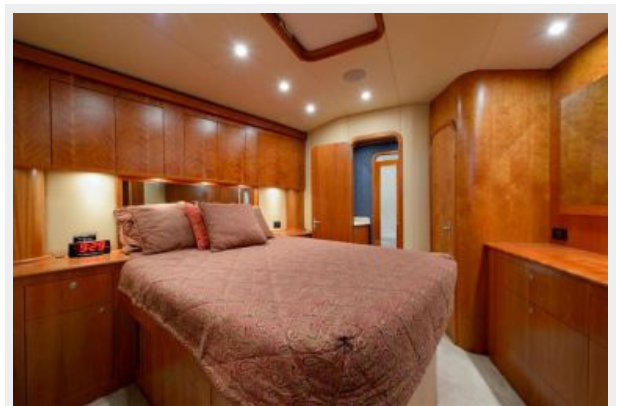
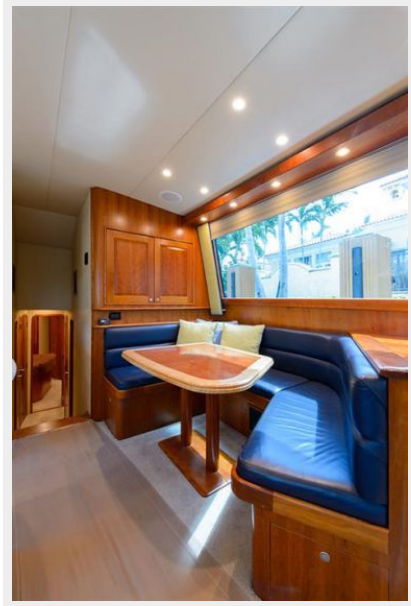
## Disclaimer

---

The Company offers the details of this vessel or yacht in good faith but cannot guarantee or warrant the accuracy of this information nor warrant the condition of the vessel. A buyer should instruct his representatives, agents, or his surveyors, to investigate such details as the buyer desires validated. This vessel or yacht is offered subject to prior sale, price change, or withdrawal without notice.

# PHOTOS





















---

# CONTACTS

---

Andrey Shestakov, leading yacht broker of the sales department of Shestakov Yacht Sales Inc. Shestakov Yacht Sales Inc., the official representative of the Miami/Fort Lauderdale FL headquarters.

---

## Contact details

---

Email: [andrey@shestakovyachtsales.com](mailto:andrey@shestakovyachtsales.com)

Web: [shestakovyachtsales.com/en/](http://shestakovyachtsales.com/en/)

---

## Telephones

---

USA: +1(954)274-4435

---

## Office hours

---

Monday – Saturday: **9:00 - 21:00** EDT

Sunday: **closed**

---

## Address

---



Harbour Towne Marina, 850 NE 3rd St,  
STE 213, Dania, FL 33004