

MONKEY BUSINESS — SPENCER YACHTS



Судостроитель: SPENCER YACHTS

Длина общая: 64' 0" (19.51m)

Год постройки: 2003

Модель: Катер для спортивной рыбалки

Цена: ЦЕНА ЯХТЫ ПО ЗАПРОСУ

Местонахождение: United States

Купить **MONKEY BUSINESS — SPENCER YACHTS** а также выбрать подходящую вам яхту из нашего каталога яхт вам поможет опытный яхтенный брокер Андрей Шестаков. На сегодняшний день компания **Shestakov Yacht Sales Inc.** имеет большое количество яхт в собственном списке продаж, а также тесно сотрудничает со всеми крупными яхтенными производителями по всему миру. Для того чтобы купить яхту **MONKEY BUSINESS — SPENCER YACHTS** а также проконсультироваться по любому вопросу связанному с покупкой, продажей, чартером яхт позвоните по телефону **+7(918)465-66-44**.

ОГЛАВЛЕНИЕ

ОГЛАВЛЕНИЕ	2
ХАРАКТЕРИСТИКИ	4
Обзор	4
Основная информация	4
Размеры	4
Размещение	4
Корпус и палуба	4
Информация о двигателе	5
ПОДРОБНОЕ ОПИСАНИЕ	6
Salon	6
Galley	6
Companionway	7
Master Stateroom And Ensuite Head	7
VIP Stateroom, Port	9
Guest Stateroom	10
Deck And Hull	11
Tower	12
Electronics And Navigation	12
Engine and Mechanical	13
Exclusions	14
Disclaimer	14
Исключения	14
Отказ от ответственности	14
ФОТОГРАФИИ	15
КОНТАКТЫ	24
Контактная информация	24
Телефоны	24
Время работы	24

Адрес

24

ХАРАКТЕРИСТИКИ

Обзор

Spencer Yachts 64 MONKEY BUSINESS With Twin CAT 3412E 1400 hp Engines With 2056 Hours, PipeWelders Full Tuna Tower, 3 Stateroom and 3 Head Layout with the Master Forward, Washer And Dryer, Sub Zero Refrigeration and Freezer Drawers, 800 gpd Sea Recovery Water Maker, Eskimo Ice Maker, Release Marine Fighting Chair With Rocket Launcher And More! Please Call to Schedule Your Personal Showing in NC.

Основная информация

Тип судна: Катер для спортивной рыбалки

Подкатегория: Convertible

Модельный год: 2003

Год постройки: 2003

Страна: United States

Открытая палуба мостика: Да

Кубрик: Да

Размеры

Длина общая: 64' 0" (19.51m)

Размещение

Всего кают: 3

Корпус и палуба

Материал корпуса: Wood

Информация о двигателе

Двигатели: 2

Производитель: Caterpillar

Модель: 3412E

Тип двигателя: Inboard

Тип топлива: Diesel

ПОДРОБНОЕ ОПИСАНИЕ

Salon

Custom L-Shaped Sofa To Port With Custom Storage Beneath

Barrel Chairs

Cherry and Birdseye Maple Table With Storage Beneath

Starboard Custom Cabinetry With Raised Panel Cherry Doors

U-Line Ice Maker

Custom Liquor And Wine Storage

Entertainment Center With RTI Master Remote

- Sony DVD/CD/Video CD
- Sony Digital Audio/Video Control Center
- Sony Digital Satellite Receiver
- Sony 5-Disc CD Changer
- Sony SAT Radio Control
- RUSSOUND CA6.4I 6 Zone - 4 Source Central Controller / Amplifier

Electrical Panel Housed in Starboard Custom Cabinetry

Cherry Valances

Custom Covered Lambrequins

Custom Blinds

Brushed Nickel Hardware

Four (4) Ceiling Speakers

Galley

The Galley is to Port with full Raised Panel Cherry cabinetry and Cherry and Maple Birdseye flooring.

Solid Surface Corian Counter Tops

Sub Zero Refrigeration and Freezers Drawers (4 Total) Beneath Counter - 2 Drawers Refrigeration And 2 Drawers Freezer Storage

GE Profile Convection Microwave Oven Behind Upper Cabinet Doors

Black and Decker Coffee Maker Behind Upper Cabinet Door

Ceran Princess Two (2) Burner Cooktop With Lift-up Corian Cover

Large and Deep Galley Sink with Moen Faucet

Brushed Nickel Hardware

GE Profile Trash Compactor

Water Tank Gauges In Cabinetry Beneath Galley Sink

Custom Storage Drawers for Dinner Plates and Cup Storage

Ample Cabinetry For Storage

Companionway

The companionway features Cherry tread steps which lift up for storage beneath, four (4) overhead lights with access to all cabins as well as the Linen Closet and Laundry Center.

Cedar Lined Linen Closet

SMX AC Controls for Galley And Salon

Bosch Axxis Front Load Washer & Dryer

Brushed Nickel Hardware

Central Vacuum Hookup

Four (4) Overhead Lights

Cherry Stairs

Carpeting Along Passageway

Master Stateroom And Ensuite Head

The Master Stateroom is Forward with an athwartship queen berth with His And Hers cedar-lined closets. The Master flat screen television is behind the vanity mirror centered between the His And Her hanging closets.

Large Queen Walk Around Berth With New Custom Mattress in 2013, Berth Lifts up For Storage Beneath And Access Ladder To Bilge Area

Cherry side cabinets

(2)Two cedar lined hanging lockers

Brushed nickel hardware

Magnetic door stops

Overhead lights

Ceiling speakers

Reading lights

Bomar hatch with screen and shade

Mirrored head board

Sony digital satellite receiver

Sony DVD/CD/Video

Sharp flat screen Aquos TV

Entertainment center is hidden behind mirror

Ample Storage

SMX AC controls

AC outlets

RTI remote sensor for entertainment center

The Master Stateroom head is roomy with a large walk in shower with a beautiful custom shower door. The flooring is a Cherry and Birdseye Maple and the countertops are solid surface Corian.

Mirrored ceiling

Overhead lights

Solid surface Corian Tops

Large walk in shower

Raritan Head

Delta sink faucet

Cherry and Birdseye Maple flooring

Exhaust fan

Undercounter water shut offs

Brushed nickel hardware

Sink

Cherry Cabinets

Storage for towels and supplies

VIP Stateroom, Port

The VIP guest cabin is located to port. This stateroom features a double berth with storage below, cedar lined hanging locker, entertainment center and private access to the guest head. There is also a large overhead storage area for dry goods or bulky items.

Double Berth

SMX AC Controls

Mirror on locker door

Overhead lights

RTI remote sensor for entertainment

Carpet

Brushed nickel hardware

Large cedar lined hanging locker

Ceiling speakers

SONY Triniton TV

"Attic" access

Access to ensuite head with shower: The VIP guest head features mirrored overhead ceiling, Cherry and Birdseye maple flooring and Corian countertops and sink. The private head has access only from the stateroom.

Exhaust fan

Undercounter water shut offs

Brushed nickel hardware

Corian sink

Cherry cabinets

Storage for towels and supplies

Mirrored cabinet door

Mirrored ceiling

(4) Overhead lights

Solid surface Corian Tops

Large walk-in shower

Raritan Head

Delta faucet

Cherry and Birdseye Maple flooring

Guest Stateroom

The guest stateroom is located to starboard and features upper/lower berths, cedar lined hanging locker and access to the semi-private guest head as well as the companionway.

Upper/lower bunks

Overhead lights

(2) Reading lights

Overhead speakers

RTI remote entertainment sensor

Mirror on locker door

SMX AC Controls

Private door to head

Large cedar lined hanging locker

Drawer storage under bottom bunk

Brushed nickel hardware

Carpet Starboard Guest Head:

This head is located forward of the stateroom on the starboard side. The flooring is a Cherry and Birdseye Maple and the counter tops are solid surface Corian. You can also enter this head from the stateroom.

Exhaust fan

Undercounter water shut offs

Brushed nickel hardware

Sink

Cherry Cabinets

(2) AC outlets

Private access from stateroom

Mirrored ceiling

Overhead lights

Solid surface Corian Tops

Large walk-in shower

Raritan Head

Mirror Cabinet doors

Delta faucet

Cherry and Birdseye Maple flooring

Deck And Hull

Blue bottom paint, (bottom stripped 2011)

Matterhorn white paint

Blue accent stripe

Window mask painted (2011)

Both shafts replaced (2012)

Flush mounted trim tabs, trim tab seals replaced (2013)

Rudder ports replaced (2011)

Anchor locker in fordeck

Freshwater washdown in anchor locker

Fortress anchor in anchor locker

Steering ram rebuilt (2011)

ACR-100 spotlight

Tower

PipeWelders full tuna tower

Engine start and stops in tower console

Molded hardtops and tower standing platform

Molded in navigation lights

Teaser reels with sliding door

Drop down electronics box

Three (3) sided enclosure (2011)

U-zip vents in enclosure

Rupp center rigger

Electronics And Navigation

Twin Furuno NavNet 3-D screens (2011)

Furuno black box 72 mile radar (2011)

Furuno black box color sounder (2011)

Northstar 952X GPS plotter/back up

FLIR cameras (2011)

Simrad AP22 autopilot

Two (2) Icom 602 VHF radios

KVH Sat TV system (2013)

Spotlight control

CAT main engine ECM's

Furuno RD-30 (tower)

Engine and Mechanical

Engine room access is in the cockpit port side of the salon door. Engine room has a pump room forward and aft is alleyway to the lazarette. The engine room is super clean and roomy. Second access to the engine room is in the galley floor to the pump room. The engine room has Awlgrip finish throughout. Most every hose and clamp have been updated over the last 24 months throughout this vessel.

Twin Caterpillar 3412E engines, 1400hp each with 2056 hours

Typical running speed 1840 rpm at 29 kts, 95 gph burn at 65% load

1900 rpm at 31 kts fuel burn 115 gph at 72% load

40 kts at wide open throttle

Main engines have turbos blueprinted, 2012

Westerbeke 20kw generator with 2183 hours

Engine room camera system

Racor main engines and generator fuel filters

Block heaters, main engines

Charles ISO boost system

Fireboy Fire System

Eskimo ice machine

Sea Recovery watermaker, 800GPD

Sea chest

Delta T air vents and fans

AC/DC lighting

Fuel transfer system

Water heater

Stingray saltwater washdown pump

Fuel site tubes

Dripless shaft logs

ZF engine

Exclusions

Owners personal effects, fishing rods, reels, tackle, gear, tools, life raft and EPIRB are not included in inventory and will not convey at closing.

Owner's artwork on Salon starboard credenza and artwork located on Galley Island are not included in inventory and will not convey with vessel at closing.

Disclaimer

The Company offers the details of this vessel in good faith but cannot guarantee or warrant the accuracy of this information nor warrant the condition of the vessel. A buyer should instruct his agents, or his surveyors, to investigate such details as the buyer desires validated. This vessel is offered subject to prior sale, price change, or withdrawal without notice.

Исключения

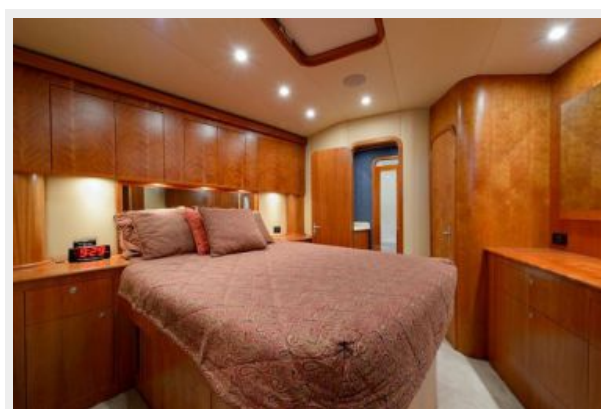
При продаже яхты исключаются личные вещи владельца.

Отказ от ответственности

Компания предоставляет описание судна или яхты добросовестно, но не может гарантировать точность этой информации, а также не ручается за техническое состояние. Покупатель должен проинструктировать своих агентов или оценщиков исследовать представленную информацию более подробно, по собственному желанию. Продажа судна или яхты, изменение цены или снятие с продажи будет происходить без предварительного уведомления.

ФОТОГРАФИИ



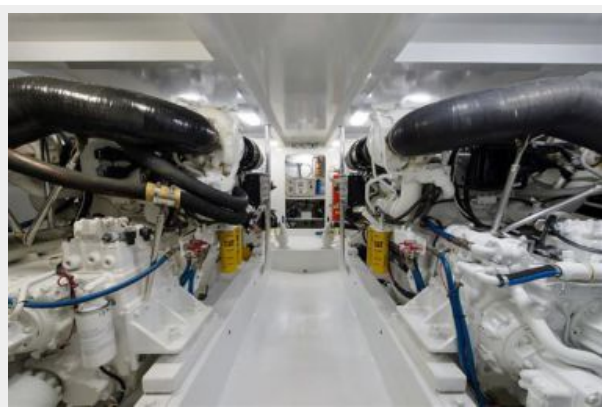
















КОНТАКТЫ

Андрей Шестаков (Andrey Shestakov) – ведущий яхтенный брокер отдела продаж яхт и судов компании Shestakov Yacht Sales Inc. Официальный представитель Shestakov Yacht Sales Inc. для русскоговорящих клиентов в центральном офисе компании в Майами/Форт Лодердейл/Флорида/США.

Контактная информация

Email: andrey@shestakovyachtsales.com

Web: shestakovyachtsales.com

Телефоны

Краснодарский край: **+7(918)465-66-44**

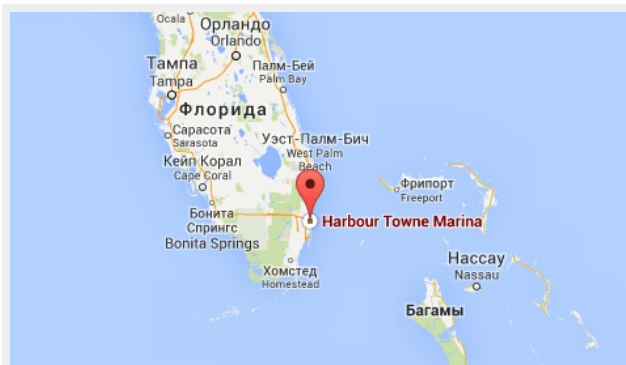
США, Майами, Флорида: **+1(954)274-4435**

Время работы

Понедельник – Суббота: **9:00 - 21:00**
EDT

Воскресенье: **Закрето**

Адрес



Harbour Towne Marina, 850 NE 3rd St,
STE 213, Dania, FL 33004