

## WESTPORT 50M — WESTPORT



**Builder:** WESTPORT

**Year Built:** 2014

**Model:** Motor Yacht

**Price:** PRICE ON APPLICATION

**Location:** United States

**LOA:** 164' 0" (49.99m)

**Beam:** 30' 10" (9.40m)

**Max Draft:** 7' 6" (2.29m)

**Cruise Speed:** 20 Kts. (23 MPH)

**Max Speed:** 25 Kts. (29 MPH)

Our experienced yacht broker, Andrey Shestakov, will help you choose and buy a yacht that best suits your needs **Westport 50M — WESTPORT** from our catalogue. Presently, at **Shestakov Yacht Sales Inc.**, we have a wide variety of yachts available on our sale's list. We also work in close contact with all the big yacht manufacturers from all over the world.

If you would like to buy a yacht **Westport 50M — WESTPORT** or would like help answering any questions concerning purchasing, selling or chartering a yacht, please call **+1(954)274-4435**

# TABLE OF CONTENTS

---

TABLE OF CONTENTS	2
SPECIFICATIONS	4
Basic Information	4
Dimensions	4
Speed, Capacities and Weight	4
Accommodations	4
Hull and Deck Information	5
Engine Information	5
PHOTOS	6
Salon Fwd View	6
Bridge / Pilothouse	6
Salon Aft View	6
Aft Deck to Salon	6
Galley	6
Dinning Fwd View	6
Master Stateroom, Aft View to Office and Foyer	7
Dining, Stbd Fwd View	7
Master, Port View	7
Master Fwd View to Head	7
Master Head, Aft View	7
Master Head, Port View	7
Master Spa Tub	8
Master Office to Foyer	8
VIP Stateroom, Bridge Deck, Aft View	8
Master Office, Port View	8
VIP Lounge, Bridge Deck, Fwd View	8
VIP, Bridge Deck, Forward View	8
VIP Lounge Bar, Bridge Deck, Fwd View	9

---

VIP Lounge, Bridge Deck, Stbd View	9
VIP Lounge, Bridge Deck, Aft view	9
VIP Terrace, Bridge Deck, Aft View	9
Day Head, Foyer	9
Guest Staterooms x 4, Lower Deck	9
Galley 2	10
Galley 3	10
Galley Pantry, Walk-in Freezer	10
Galley Pantry, Walk-in Refrigerator	10
Crew Pantry and Laundry Room	11
Crew Lounge, Forward, Lower Deck	11
50m Running	11
50m Running	11
CONTACTS	12
Contact details	12
Telephones	12
Office hours	12
Address	12

---

# SPECIFICATIONS

---

## Basic Information

---

**Category:** Motor Yacht

**Sub Category:** Tri-Deck

**Model Year:** 2014

**Year Built:** 2014

**Country:** United States

**Vessel Top:** Hardtop

**Cockpit:** Yes

**Helipad:** Yes

## Dimensions

---

**LOA:** 164' 0" (49.99m)

**LWL:** 142' 8" (43.48m)

**Beam:** 30' 10" (9.40m)

**Max Draft:** 7' 6" (2.29m)

## Speed, Capacities and Weight

---

**Cruise Speed:** 20 Kts. (23 MPH)

**Max Speed:** 25 Kts. (29 MPH)

**Displacement:** 750000 Pounds

**Gross Tonnage:** 496 Pounds

**Water Capacity:** 2200 Gallons

**Holding Tank:** 1680 Gallons

**Fuel Capacity:** 20000 Gallons

## Accommodations

---

**Total Cabins:** 6

**Total Berths:** 7

**Sleeps:** 12

**Total Heads:** 6

**Captain Cabin:** True

**Crew Cabin:** 5

**Crew Berths:** 10

**Crew Sleeps:** 12

**Crew Heads:** 6

---

## Hull and Deck Information

---

**Hull Material:** Fiberglass

**Deck Material:** Teak

**Hull Designer:** Bill Garden

**Interior Designer:** Donald Starkey

---

## Engine Information

---

**Manufacturer:** MTU

**Model:** DDC 16V4000M73L

**Engine Type:** Inboard

**Fuel Type:** Diesel

# PHOTOS

**Bridge / Pilothouse**



**Salon Fwd View**



**Salon Aft View**



**Aft Deck to Salon**



**Galley**



**Dinning Fwd View**



**Dining, Stbd Fwd View**



**Master Stateroom, Aft View to Office and Foyer**



**Master Fwd View to Head**



**Master, Port View**



**Master Head, Aft View**



**Master Head, Port View**



**Master Spa Tub**



**Master Office to Foyer**



**Master Office, Port View**



**VIP Stateroom, Bridge Deck, Aft View**



**VIP, Bridge Deck, Forward View**



**VIP Lounge, Bridge Deck, Fwd View**





**VIP Lounge Bar, Bridge Deck, Fwd View**



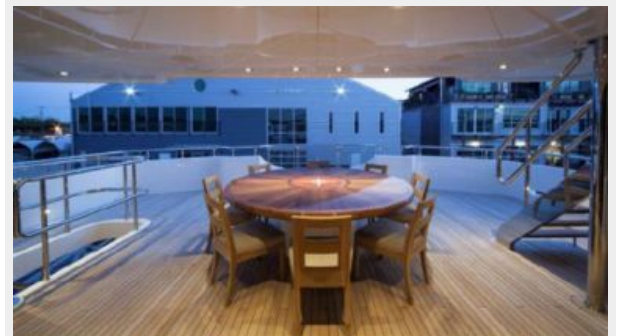
**VIP Lounge, Bridge Deck, Stbd View**



**VIP Lounge, Bridge Deck, Aft view**



**VIP Terrace, Bridge Deck, Aft View**



**Guest Staterooms x 4, Lower Deck**



**Day Head, Foyer**



**Galley 2**



**Galley 3**



**Galley Pantry, Walk-in Freezer**

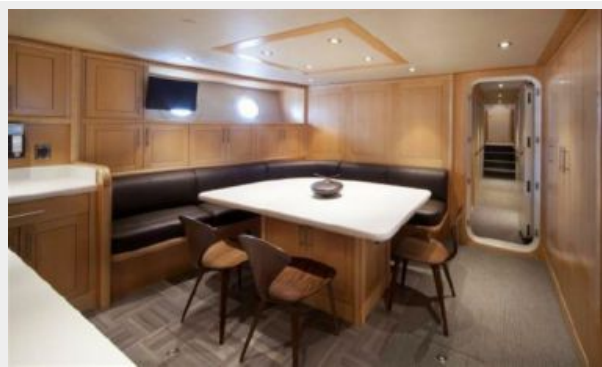


**Galley Pantry, Walk-in Refrigerator**



## Crew Pantry and Laundry Room

### Crew Lounge, Forward, Lower Deck



### 50m Running



### 50m Running



# CONTACTS

---

Andrey Shestakov, leading yacht broker of the sales department of Shestakov Yacht Sales Inc. Shestakov Yacht Sales Inc., the official representative of the Miami/Fort Lauderdale FL headquarters.

## Contact details

---

Email: [andrey@shestakovyachtsales.com](mailto:andrey@shestakovyachtsales.com)

Web: [shestakovyachtsales.com/en/](http://shestakovyachtsales.com/en/)

## Telephones

---

USA: +1(954)274-4435

## Office hours

---

Monday – Saturday: **9:00 - 21:00** EDT

Sunday: **closed**

## Address

---



Harbour Towne Marina, 850 NE 3rd St,  
STE 213, Dania, FL 33004