

LILY PAD — OCEAN YACHTS



Builder: [Ocean Yachts](#)

Year Built: 2001

Model: Sport Fisherman

Price: PRICE ON APPLICATION

Location: United States

LOA: 40' 0" (12.19m)

Beam: 14' 2" (4.32m)

Max Draft: 3' 8" (1.12m)

Cruise Speed: 24 Kts. (28 MPH)

Max Speed: 30 Kts. (35 MPH)

Our experienced yacht broker, Andrey Shestakov, will help you choose and buy a yacht that best suits your needs LILY PAD — Ocean Yachts from our catalogue. Presently, at Shestakov Yacht Sales Inc., we have a wide variety of yachts available on our sale's list. We also work in close contact with all the big yacht manufacturers from all over the world.

If you would like to buy a yacht LILY PAD — Ocean Yachts or would like help answering any questions concerning purchasing, selling or chartering a yacht, please call +1(954)274-4435

TABLE OF CONTENTS

TABLE OF CONTENTS	2
SPECIFICATIONS	5
Overview	5
Basic Information	5
Dimensions	5
Speed, Capacities and Weight	5
Accommodations	6
Hull and Deck Information	6
Engine Information	6
DETAILED INFORMATION	7
Accommodations	7
Master Staterom, Amidship	7
Guest Stateroom, Forward	7
Salon	7
Head	8
Galley, Main Deck, Aft Starboard	8
Helm / Electronics and Navigation	8
Deck	9
Engine and Mechanical Equipment	9
Electrical System / Equipment	9
Cockpit / Fishing Equipment	10
Additional Features / Equipment	10
Exclusions	10
Salesman's Comments	10
Exclusions	10
Disclaimer	11
PHOTOS	12
Profile 2	12

Master Stateroom 1	12
Master Stateroom 3	12
Master Stateroom 2	12
Guest Stateroom 1	12
Guest Stateroom 2	12
Salon 1 - Sofa	13
Salon 2 - Dinette	13
Salon 3	13
Salon 4	13
Head 1	13
Salon 5 - Pull Out Sofa Bed	13
Galley	13
Head 2	13
Helm / Electronics & Navigation 1	14
Helm / Electronics & Navigation 2	14
Helm / Electronics & Navigation 3	14
Helm / Electronics & Navigation 4	14
Helm / Electronics & Navigation 5 - Overhead Electronics Box	14
Deck 1 - Bow	14
Deck 2 - Bow Rail	15
Deck 3 - Forward Seating	15
Engine & Mechanical Equipment 1	15
Engine & Mechanical Equipment 2	15
Engine & Mechanical Equipment 3	15
Engine & Mechanical Equipment 4	15
Engine & Mechanical Equipment 6 - Engine Hours	16
Engine & Mechanical Equipment 5	16
Engine & Mechanical Equipment 7 - Engine Hours	16
Cockpit / Fishing Equipment 1	16

Cockpit / Fishing Equipment 2 - Cockpit Sink	16
Cockpit / Fishing Equipment 3	16
Cockpit / Fishing Equipment 4 - Transom	17
CONTACTS	18
Contact details	18
Telephones	18
Office hours	18
Address	18

SPECIFICATIONS

Overview

ANOTHER MAJOR PRICE REDUCTION FOR QUICK SALE!!! "LILY PAD" HAS 105 ACTUAL HOURS!!! CATERPILLAR RECOMMENDED THAT THE 1,000 HOUR SERVICE BE DONE EVEN IF IT HAS LOW HOURS AND IS 14 YEARS OLD. SELLER HAD THE SERVICE DONE BY CANYON CLUB SERVICE, AN AUTHORIZED CATERPILLAR DEALER. SHE IS READY TO GO FOR THE NEW OWNER. SELLER IS MOVING UP! ACT NOW!!!

Basic Information

Category: Sport Fisherman

Sub Category: Convertible

Model Year: 2001

Year Built: 2001

Country: United States

Vessel Top: Hardtop

Cockpit: Yes

Dimensions

LOA: 40' 0" (12.19m)

Beam: 14' 2" (4.32m)

Max Draft: 3' 8" (1.12m)

Speed, Capacities and Weight

Cruise Speed: 24 Kts. (28 MPH)

Max Speed: 30 Kts. (35 MPH)

Displacement: 27500 Pounds

Water Capacity: 90 Gallons

Fuel Capacity: 408 Gallons

Accommodations

Total Cabins: 2

Total Berths: 6

Sleeps: 6

Total Heads: 1

Hull and Deck Information

Hull Material: Fiberglass

Deck Material: Fiberglass

Hull Configuration: Modified V-Hull

Hull Color: White

Engine Information

Engines: 2

Manufacturer: Caterpillar

Model: 3126

Engine Type: Inboard

Fuel Type: Diesel

DETAILED INFORMATION

Accommodations

Sleeps four owners and guests in two Staterooms plus settee sleeps two for a total of six berths. One Head with shower. Two-Stateroom, Galley-up with dinette up. Master Stateroom amidship. Guest Stateroom forward. Single Head and shower.

Master Staterom, Amidship

- TV
- Head
- Mirror
- Shower
- Carpeting
- Wallpaper
- Night stand
- Queen berth
- Hanging locker
- Under bed storage
- Cedar hanging closets
- Air conditioning w/ controls

Guest Stateroom, Forward

- Carpeting
- Wallpaper
- Double berth
- Hanging locker
- Air conditioning
- Under bed drawer
- Upper cabinet in lieu of top bunk

Salon

- TV
- Table
- Settee
- Dinette
- Storage

- Carpeting
- Mini blinds
- Stereo system
- Cable TV hookups
- Sofa bed w/ rod storage
- Trim & cabinetry are teak
- Air conditioning w/ controls

Head

- Sink
- Shower
- Wallpaper
- Exhaust fan
- Vinyl flooring
- Medicine cabinet
- Teak entrance door
- Overboard, electric head w/ 31 gallon holding tank

Galley, Main Deck, Aft Starboard

- Sink
- Tile flooring
- Insta hot water
- Microwave oven
- Refrigerator w/ freezer
- Central vacuum system
- Two-burner, electric stove
- 20 gallon Hot water heater
- Pressure, dockside fresh water system

Helm / Electronics and Navigation

- Compass
- Furuno 1942 MKII radar
- Robertson AP22 auto pilot
- Furuno FCV 292 fish finder
- Raymarine Tri-Data System
- Icom M502 VHF radio (primary)
- Icom M127 VHF radio (secondary)
- Northstar 952X WAAS System chart plotter

- CA200B, CA50B-12, CA50 / 200-12M transducers

Deck

- Helm seat
- Transom door
- Spreader lights
- Navigation lights
- Flybridge curtain
- Bow pulpit w/ rails
- Anchor w/ 200' lines
- Lewmar Concept II electric windlass
- Coast Guard approved safety package
- Fresh water, salt water Deck wash down system

Engine and Mechanical Equipment

- Trim tabs
- Fuel filters
- Bilge blower
- High bilge alarm
- Electric air horns
- Hydraulic steering
- Oil pressure alarm
- Oil transfer system
- Fresh water cooling
- Engine synchronizers
- Bridge engine controls
- Raw water sea strainer
- Engine fuel shut-off valve
- Halon fire control system
- Engine temperature alarm
- (3) Automatic bilge pumps
- Reverse cycle air conditioner
- Thermal, acoustical insulation
- Twin 420 hp. Diesel I/B 2001 CAT 3126's w/ 104 hrs.

Electrical System / Equipment

- (4) Batteries
- Dockside cables

- Battery parallel switch
- 12v DC electrical system
- 220v AC electrical system
- 40amp Automatic battery charger
- Westerbeke 7.6kW generator w/ 114 hrs.

Cockpit / Fishing Equipment

- Fish box
- Bait freezer
- Cockpit sink
- Center rigger
- (4) Rod holders
- Rupp outriggers
- 4-rod Rocket launcher (Cockpit - aft rail)

Additional Features / Equipment

- Fiberglass mufflers
- Awlgrip Engine Room
- Bomar hatch in hardtop
- Electrical outlet in Engine Room
- Fresh water spigot in Engine Room

Exclusions

Owner's personal gear and items.

Salesman's Comments

ANOTHER MAJOR PRICE REDUCTION FOR QUICK SALE!!! "LILY PAD" HAS 105 ACTUAL HOURS!!! CATERPILLAR RECOMMENDED THAT THE 1,000 HOUR SERVICE BE DONE EVEN IF IT HAS LOW HOURS AND IS 14 YEARS OLD. SELLER HAD THE SERVICE DONE BY CANYON CLUB SERVICE, AN AUTHORIZED CATERPILLAR DEALER. SHE IS READY TO GO FOR THE NEW OWNER. SELLER IS MOVING UP! ACT NOW!!!

Exclusions

Owner's personal belongings.

Disclaimer

The Company offers the details of this vessel or yacht in good faith but cannot guarantee or warrant the accuracy of this information nor warrant the condition of the vessel. A buyer should instruct his representatives, agents, or his surveyors, to investigate such details as the buyer desires validated. This vessel or yacht is offered subject to prior sale, price change, or withdrawal without notice.

PHOTOS

Profile 2



Master Stateroom 1



Master Stateroom 2



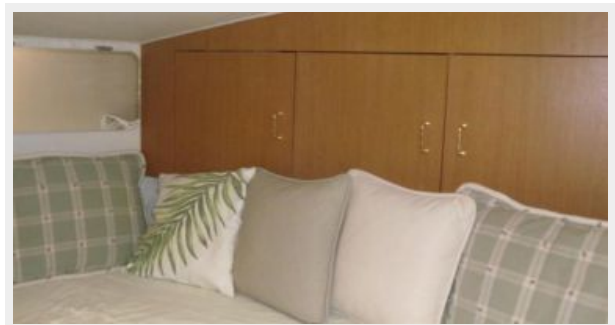
Master Stateroom 3



Guest Stateroom 1



Guest Stateroom 2



Salon 1 - Sofa



Salon 2 - Dinette



Salon 3



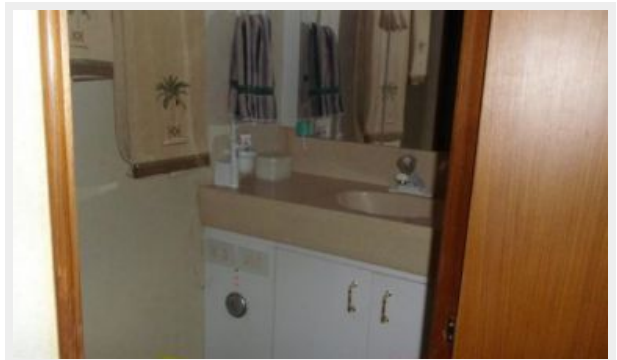
Salon 4



Salon 5 - Pull Out Sofa Bed



Head 1



Head 2



Galley



Helm / Electronics & Navigation 1



Helm / Electronics & Navigation 2



Helm / Electronics & Navigation 3



Helm / Electronics & Navigation 4



**Helm / Electronics & Navigation 5 -
Overhead Electronics Box**



Deck 1 - Bow



Deck 2 - Bow Rail



Deck 3 - Forward Seating



Engine & Mechanical Equipment 1



Engine & Mechanical Equipment 2



Engine & Mechanical Equipment 3



Engine & Mechanical Equipment 4



Engine & Mechanical Equipment 6 - Engine Hours



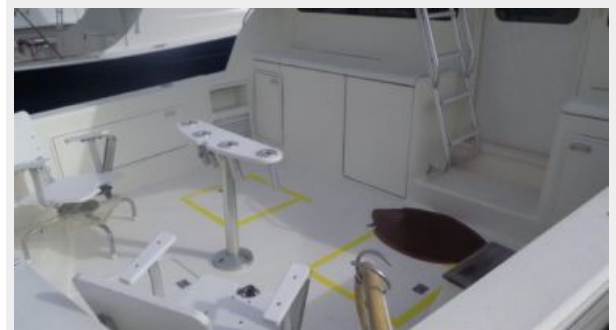
Engine & Mechanical Equipment 5



Engine & Mechanical Equipment 7 - Engine Hours



Cockpit / Fishing Equipment 1



Cockpit / Fishing Equipment 2 - Cockpit Sink



Cockpit / Fishing Equipment 3



Cockpit / Fishing Equipment 4 - Transom



CONTACTS

Andrey Shestakov, leading yacht broker of the sales department of Shestakov Yacht Sales Inc. Shestakov Yacht Sales Inc., the official representative of the Miami/Fort Lauderdale FL headquarters.

Contact details

Email: andrey@shestakovyachtsales.com

Web: shestakovyachtsales.com/en/

Telephones

USA: +1(954)274-4435

Office hours

Monday – Saturday: **9:00 - 21:00** EDT

Sunday: **closed**

Address



Harbour Towne Marina, 850 NE 3rd St,
STE 213, Dania, FL 33004