

ALBION — PACIFIC SEACRAFT



Builder: PACIFIC SEACRAFT

Year Built: 1981

Model: Sloop

Price: PRICE ON APPLICATION

Location: United States

LOA: 37' 0" (11.28m)

Beam: 10' 10" (3.30m)

Max Draft: 5' 5" (1.65m)

Cruise Speed: 6 Kts. (7 MPH)

Max Speed: 7 Kts. (8 MPH)

Our experienced yacht broker, Andrey Shestakov, will help you choose and buy a yacht that best suits your needs **ALBION — PACIFIC SEACRAFT** from our catalogue. Presently, at Shestakov Yacht Sales Inc., we have a wide variety of yachts available on our sale's list. We also work in close contact with all the big yacht manufacturers from all over the world.

If you would like to buy a yacht **ALBION — PACIFIC SEACRAFT** or would like help answering any questions concerning purchasing, selling or chartering a yacht, please call **+1(954)274-4435**

TABLE OF CONTENTS

TABLE OF CONTENTS	2
SPECIFICATIONS	4
Overview	4
Basic Information	4
Dimensions	4
Speed, Capacities and Weight	5
Accommodations	5
Hull and Deck Information	5
Engine Information	5
DETAILED INFORMATION	6
Accommodations	6
Galley	6
Electrical	6
Electronics & Navigation	6
Deck & Hull	6
Data	7
Engine & Mechanical	7
Remarks	7
Exclusions	8
Exclusions	8
Disclaimer	8
PHOTOS	9
Main Cabin Looking Aft	9
Convertible Settee Starboard	9
Galley	9
Port Settee	9
Nav Station & Quarterberth	9
Offset Double Berth Forward	9

Head	10
Foredeck	10
Deck	10
Cockpit	10
Bow Port	11
Bow Starboard	11
Stern	11
CONTACTS	12
Contact details	12
Telephones	12
Office hours	12
Address	12

SPECIFICATIONS

Overview

The one that started it all ... The Pacific Seacraft 37 is capable of carrying her skipper and crew across any sea with safety and in splendid comfort. Moreover, she can do so with a swiftness that has heretofore been the exclusive realm of the ocean racer. The Crealock 37's design, construction and attention to detail make her a yacht appreciated and owned by sailors with years of experience and many blue water miles behind them. The Crealock 37 was chosen by veteran solo racer David White for the Singlehanded Transpacific Yacht Race. Racing against larger boats, "Intention's" remarkable performance was proven when she finished second, logging 2,482 miles. David averaged 6.76 knots for 15 days straight.

ALBION is a fine example of the class awaiting only new owners bright work and off you go to enjoy sparkling sailing performance in a classic and robust cruising package. Sellers are motivated, two boat owners!

Basic Information

Category: Sloop

Sub Category: Cruising/Racing Sailboat

Model Year: 1981

Year Built: 1981

Country: United States

Vessel Top: 2354

Cockpit: Yes

Dimensions

LOA: 37' 0" (11.28m)

LWL: 27' 9" (8.46m)

Beam: 10' 10" (3.30m)

Max Draft: 5' 5" (1.65m)

Speed, Capacities and Weight

Cruise Speed: 6 Kts. (7 MPH)

Max Speed: 7 Kts. (8 MPH)

Displacement: 16000 Pounds

Water Capacity: 95 Gallons

Holding Tank: 15 Gallons

Fuel Capacity: 37 Gallons

Accommodations

Total Cabins: 1

Sleeps: 6

Total Heads: 1

Hull and Deck Information

Hull Material: Fiberglass

Hull Finish: Fiberglass

Hull Designer: W. Crealock

Engine Information

Engines: 1

Manufacturer: Universal

Model: 5432

Fuel Type: Diesel

DETAILED INFORMATION

Accommodations

Forward cabin with offset double berth to starboard sleeps 2, convertible settee starboard sleeps 2, port settee sleeps 1, and aft quarter berth sleeps 1 for a total of accommodations for 6 persons.

Galley

- Double stainless steel sink
- 3-Burner stainless steel countertop stove with oven by Hillerange fired by propane
- 6 Cubic ft. cold box with refrigeration module
- Teak cabinetry
- Laminate countertops
- Pressure fresh water & manual foot pumps for fresh water & salt water

Electrical

- 12V DC, 120V AC, 30 amp service
- Batteries, shore power - 2 banks. 3 batteries for 12V system - (2) Group 24 batteries for house, (1) Group 27 battery for engine start
- 100 amp Balmar alternator
- 20 amp West Marine battery charger
- Polarity indicator
- Shore power cord

Electronics & Navigation

- Tiller pilot autopilot
- West Marine MC795 VHF
- Suunoto 4" magnetic compass
- Data Marine digital knot meter
- Data Marine digital depth sounder
- Data Marine digital anemometer
- Data Marine wind direction

Deck & Hull

- 35# CQR anchor with 50' of 5/16" chain & 200' line rode
- Danforth 22-S spare anchor with 6' of 5/16" chain & 150' line rode

- Deck stepped painted aluminum mast with spreader & boom
- Hood Seafurl furling gear
- Barlow sheet winches (2)
- Barlow main halyard winch (1)
- Lewmar staysail sheet winches (2)
- Lewmar main sheet winch (1)
- Harken main sheet traveler
- (7) Line latches on cabin top
- Reefing gear is three points rigged to cockpit
- Mainsail: Dacron, standard battens, 3 reef points by Ellison Sails
- Working jib: Dacron 105% by Ellison Sails
- Mainsail cover
- Companionway dodger

Data

- I = 44.0' / 13.41m
- J = 15.75' / 4.80m
- P = 38.17' / 11.63m
- E = 14.25' / 4.34m
- Sail area 758 sq. ft.

Engine & Mechanical

- Tiller steering
- Hurth transmission
- Morse cable controls
- Fram fuel filters (2)
- Lube oil filter (1)

Remarks

The one that started it all ... The Pacific Seacraft 37 is capable of carrying her skipper and crew across any sea with safety and in splendid comfort. Moreover, she can do so with a swiftness that has heretofore been the exclusive realm of the ocean racer. The Crealock 37's design, construction and attention to detail make her a yacht appreciated and owned by sailors with years of experience and many blue water miles behind them. The Crealock 37 was chosen by veteran solo racer David White for the Singlehanded Transpacific Yacht Race. Racing against larger boats, "Intention's" remarkable performance was proven when she finished second, logging 2,482 miles. David averaged 6.76 knots for 15 days straight.

ALBION is a fine example of the class awaiting only new owners bright work and off you go to enjoy sparkling sailing performance in a classic and robust cruising package. Sellers are motivated, two boat owners!

Exclusions

All personal gear; loose items; galley gear; CD's; charts; fishing equipment; tools; spare parts; supplies & items not specifically listed on equipment list specifications sheet.

Exclusions

Owner's personal belongings.

Disclaimer

The Company offers the details of this vessel or yacht in good faith but cannot guarantee or warrant the accuracy of this information nor warrant the condition of the vessel. A buyer should instruct his representatives, agents, or his surveyors, to investigate such details as the buyer desires validated. This vessel or yacht is offered subject to prior sale, price change, or withdrawal without notice.

PHOTOS

Main Cabin Looking Aft



Convertible Settee Starboard



Galley



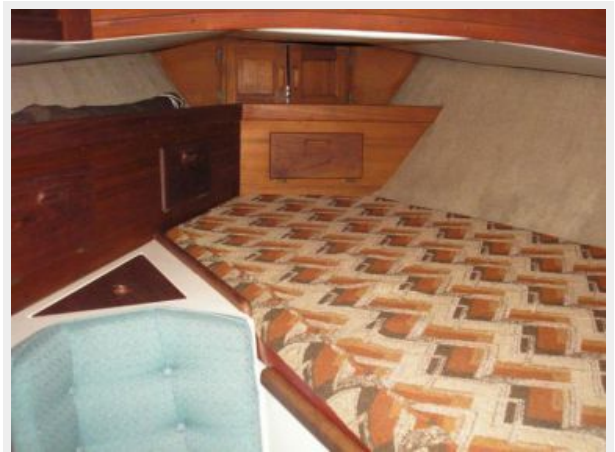
Port Settee



Nav Station & Quarterberth



Offset Double Berth Forward



Head



Foredeck



Deck



Cockpit



Bow Port



Bow Starboard



Stern



CONTACTS

Andrey Shestakov, leading yacht broker of the sales department of Shestakov Yacht Sales Inc. Shestakov Yacht Sales Inc., the official representative of the Miami/Fort Lauderdale FL headquarters.

Contact details

Email: andrey@shestakovyachtsales.com

Web: shestakovyachtsales.com/en/

Telephones

USA: +1(954)274-4435

Office hours

Monday – Saturday: **9:00 - 21:00** EDT

Sunday: **closed**

Address



Harbour Towne Marina, 850 NE 3rd St,
STE 213, Dania, FL 33004