

# 43FT 2003 CABO YACHTS 43 CONVERTIBLE — CABO



**Builder:** CABO

**Year Built:** 2003

**Model:** Motor Yacht

**Price:** PRICE ON APPLICATION

**Location:** Puerto Rico

**LOA:** 43' 0" (13.11m)

**Beam:** 15' 1" (4.60m)

**Min Draft:** 4' 4" (1.32m)

Our experienced yacht broker, Andrey Shestakov, will help you choose and buy a yacht that best suits your needs 43ft 2003 Cabo Yachts 43 Convertible — CABO from our catalogue. Presently, at Shestakov Yacht Sales Inc., we have a wide variety of yachts available on our sale's list. We also work in close contact with all the big yacht manufacturers from all over the world.

If you would like to buy a yacht 43ft 2003 Cabo Yachts 43 Convertible — CABO or would like help answering any questions concerning purchasing, selling or chartering a yacht, please call **+1(954)274-4435**

# TABLE OF CONTENTS

TABLE OF CONTENTS	2
SPECIFICATIONS	5
Basic Information	5
Dimensions	5
Speed, Capacities and Weight	5
Hull and Deck Information	5
Engine Information	5
DETAILED INFORMATION	6
Salon	6
Galley	6
Master Stateroom	6
Master Head	6
Guest Stateroom	6
Guest Head	7
Flybridge	7
Engine Room	7
COCKPIT	7
Deck	8
Exclusions	8
Disclaimer	8
PHOTOS	9
Aft View	9
Exterior	9
Side View	9
Cockpit	9
Cockpit Table	10
Cockpit Floor	10
Aft Freezer	10

Bridge Helm Chair	11
Bridge Side Cushion	11
Bridge Forward Cushion	11
Helm	11
Instrument Panel	11
Garmin 4210 GPS	11
Simrad Auto pilot AP-22	12
NavNet Radar / Plotter	12
Search Light Control / Depth Sounder / Bridge Radio CD	12
Icom VHF	12
Fwd Davit	13
Bridge Enclosures	13
Salon Sofa	13
Salon	13
Dinette	14
Salon TV	14
Salon Sofa	14
Salon Aft View	14
Brakers Panel	14
Cabo Signature Electric Cables Installation	14
Electric Cables Installation	15
Galley	15
Galley SubZero Refrigerators	15
Galley Freezer	15
Master Stateroom	16
Master TV	16
Master Head Vanity	16
Master Head	16
Fwd Stateroom	17

Fwd Stateroom	17
Guest Head	17
Fwd Stateroom	17
Engine Room	18
Diesel Conditioning System	18
A/C	18
Shaft	18
Shaft	18
MAN Engine	18
Primary Generator	19
MAN Engines	19
Westerbeke 15kw	19
Auxiliary Generator Phasor	19
Oil Changing System	20
Glendenning Cablemaster	20
Windlass	21
Engine Room Main Brakers	21
Haul Out	21
Underwaterlights	21
Fresh Bottom Paint and Anodes	22
New Bottom Paint 6/23/14	22
CONTACTS	23
Contact details	23
Telephones	23
Office hours	23
Address	23

---

# SPECIFICATIONS

---

## Basic Information

---

**Category:** Motor Yacht

**Sub Category:** Convertible

**Model Year:** 2003

**Year Built:** 2003

**Country:** Puerto Rico

## Dimensions

---

**LOA:** 43' 0" (13.11m)

**Beam:** 15' 1" (4.60m)

**Min Draft:** 4' 4" (1.32m)

## Speed, Capacities and Weight

---

**Displacement:** 33500 Pounds

**Water Capacity:** 100 Gallons

**Fuel Capacity:** 700 Gallons

## Hull and Deck Information

---

**Hull Material:** Fiberglass

## Engine Information

---

**Engines:** 2

**Manufacturer:** MAN

**Model:** D2848LE403

**Engine Type:** Inboard

**Fuel Type:** Diesel

---

## DETAILED INFORMATION

---

### Salon

---

Salon Teak & Holly Sole with area carpet L-Shaped sofa to port with large storage below Flush mount Samsung HDTV & Bose Lifestyle surround sound system AC/DC main electrical panel Recessed Overhead Lighting L-shaped dinette forward with teak gloss table Refrigeration system control panel VDO water tank gauge Westerbeke Generator Control Panel

### Galley

---

Overhead Lighting

Zero 249FF Freezer

Panasonic Dimension Microwave

Sink with Retractable Hose Faucet Built in Cabinetry with Positive Locking Latches Below Galley Storage are with Seaward Water Heater & Holding Tank Corian Countertops (2) Sub-Zero Drawer Refrigerators Kenyon 2 Burner Electric Cook top Whirlaway Garbage Disposal Drawer and Locker Storage Areas

### Master Stateroom

---

Double size walkaround berth with storage below Flat screen television flush mounted in bulkhead Overhead recessed Lighting Carpeted Sole Storage Cabinets on Starboard Side Cruisair SMX II air conditioner control Hanging Locker Port & Starboard Nightstand with Lamps Forward Door to Master Head

### Master Head

---

Vacuflush head system Stall shower w/ glass door Molded nonskid sole Corian countertop with molded sink Vinyl overhead w/ 4 recessed lights Tankwatch holding tank level monitor Medicine cabinet w/ mirrored doors

### Guest Stateroom

---

Double bed

Port and Upper Bunks

Port side Double Large Drawer Storage Areas Forward Anchor Locker Access Reading Lamps  
Cruisair Fan Speed Control Extra Width Stbd Lower Berth Hull-side Cabinets for Storage Central  
Vacuum Connection Overhead Hatch with Built in Shade Hanging Locker Port side Aft

## Guest Head

---

Vacuflush head system Vanity w/ sink and showerhead hose Medicine locker with mirrored  
doors Fiberglass nonskid sole Vinyl overhead w/ recessed light Overhead hatch w/ screen  
Entrance via passageway

## Flybridge

---

Fiberglass Hardtop with Aluminum Supports Enclosure Curtains with U Zips Bench Seat With  
Storage Twin Teak/Chrome Pedestal Helm Seats Cabo Gauge Panel with VDO Instrumentation  
Robertson AP22 Autopilot Furuno Navnet 10.4 Unit

GARMIN 4210

Glendenning Synch/Troll Control

Overhead Deck Lighting and Cockpit Lights Port Side Bench Seating with Storage Single Lever  
Clutch and Throttle Controls Icom M502 VHF Radio Ritchie Compass

## Engine Room

---

Twin MAN Diesels 800 HP Each

12.5 Westerbeke Generator

ADD PHASOR 10KW BACK UP GENERATOR

Reverso Oil Change System Seastar Hydraulic System for Steering Phase Three 45amp Smart  
Battery Charger Engine Room Vents with Demisting system Glacier Cockpit Fishbox &  
refrigeration compressor Aux Dewatering System Using Main Engine Suction Battery Cut Off  
Switches Dual Racor 75/1000FXG Filters With Gauges on Each Main Dripless Shaft Seals 2  
Mounted Blue Blowers in Engine Room 2 Cruisair Air Conditioning Compressors High Water  
Alarm switch at Automatic Bilge Pump A/C Cooling Pump

ALGAE -X FUEL POLISHING SYSTEM

## COCKPIT

---

Non-Skid Deck Port & Starboard recessed Rod Holder Lockers Cablemaster Inlet and Control

---

Switch Deepwell Freezer Port Sink Area With Cutting Board Fishbox Port AND Starboard in Deck Lazarette allows access to storage, fiberglass fuel tank, rudder steering gear, bilge pumps, water pumps and fishbox macerator Pump Transom Livewell with Lights Tuna Door with Gate Cockpit Combing Cushions Speakers Tackle Center Storage/Drawers Engine room Entrance Salt and Fresh Water Wash down

## Deck

---

UMT Davit Aluminum Bow Rails Outriggers black and gold Dark Tinted Side and Aft Windows Bow Pulpit with Anchor Roller Lewmar Anchor Windlass Double Spreaders

## Exclusions

---

Owner's personal belongings.

## Disclaimer

---

The Company offers the details of this vessel or yacht in good faith but cannot guarantee or warrant the accuracy of this information nor warrant the condition of the vessel. A buyer should instruct his representatives, agents, or his surveyors, to investigate such details as the buyer desires validated. This vessel or yacht is offered subject to prior sale, price change, or withdrawal without notice.



# PHOTOS

**Exterior**



**Aft View**



**Side View**



**Cockpit**



**Cockpit Table**



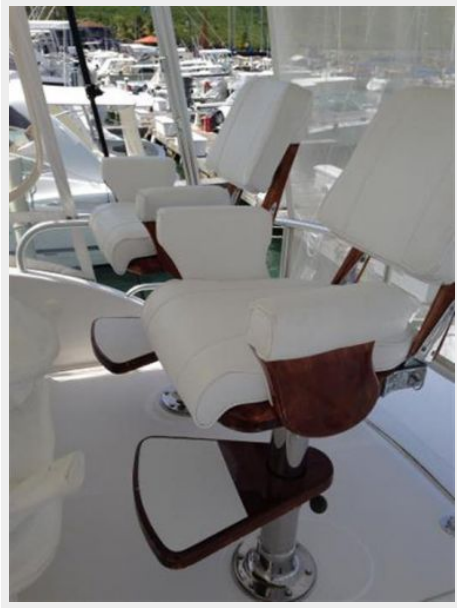
**Cockpit Floor**



**Aft Freezer**



**Bridge Helm Chair**



**Bridge Side Cushion**



**Bridge Forward Cushion**



**Helm**



**Instrument Panel**



**Garmin 4210 GPS**



**Simrad Auto pilot AP-22**



**NavNet Radar / Plotter**



**Search Light Control / Depth Sounder /  
Bridge Radio CD**

**Icom VHF**

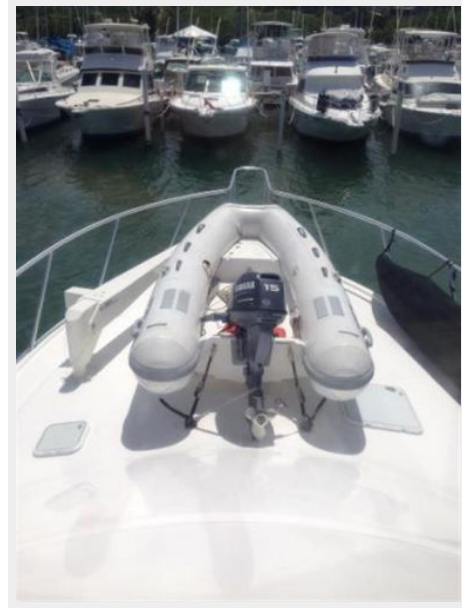




**Bridge Enclosures**



**Fwd Davit**



**Salon Sofa**



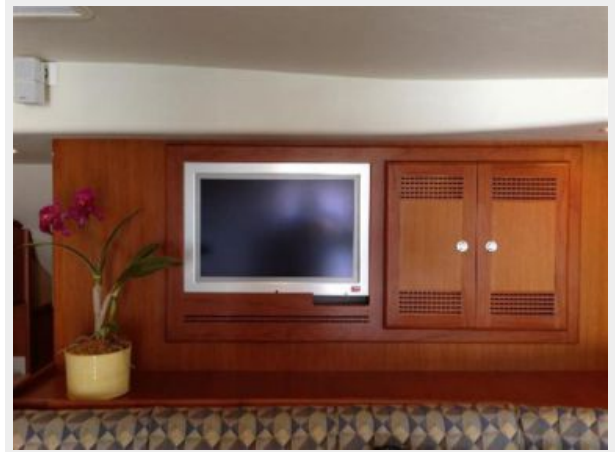
**Salon**



**Dinette**



**Salon TV**



**Salon Sofa**



**Salon Aft View**



**Brakers Panel**



**Cabo Signature Electric Cables Installation**



### Electric Cables Installation



### Galley



### Galley SubZero Refrigerators

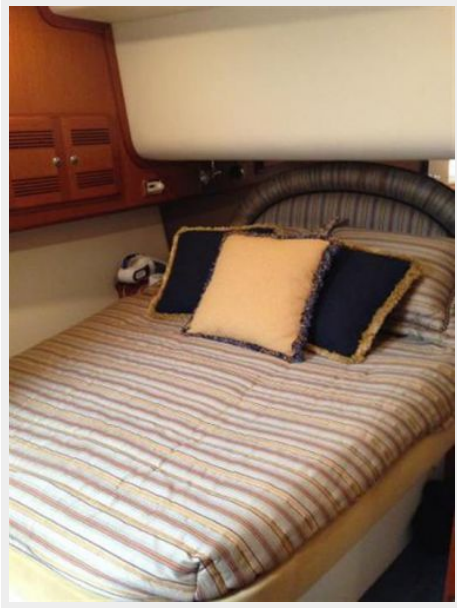


### Galley Freezer





### Master Stateroom



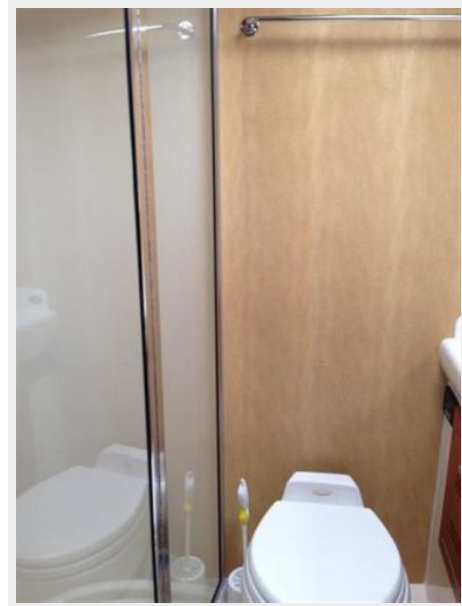
### Master TV



### Master Head Vanity



### Master Head





**Fwd Stateroom**



**Fwd Stateroom**



**Fwd Stateroom**



**Guest Head**



### Engine Room



### Diesel Conditioning System



### A/C



### Shaft



### Shaft



### MAN Engine





**MAN Engines**



**Primary Generator**



**Westerbeke 15kw**



**Auxiliary Generator Phasor**



### Oil Changing System



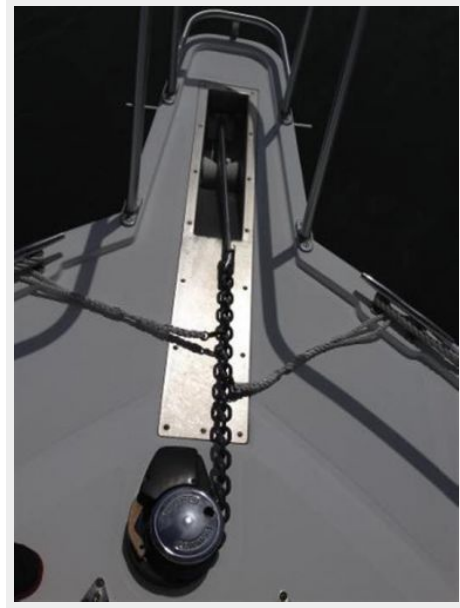
### Glendenning Cablemaster



### Engine Room Main Brakers



### Windlass



### Haul Out



### Underwaterlights



### Fresh Bottom Paint and Anodes



### New Bottom Paint 6/23/14



# CONTACTS

---

Andrey Shestakov, leading yacht broker of the sales department of Shestakov Yacht Sales Inc. Shestakov Yacht Sales Inc., the official representative of the Miami/Fort Lauderdale FL headquarters.

## Contact details

---

Email: [andrey@shestakovyachtsales.com](mailto:andrey@shestakovyachtsales.com)

Web: [shestakovyachtsales.com/en/](http://shestakovyachtsales.com/en/)

## Telephones

---

USA: +1(954)274-4435

## Office hours

---

Monday – Saturday: **9:00 - 21:00** EDT

Sunday: **closed**

## Address

---



Harbour Towne Marina, 850 NE 3rd St,  
STE 213, Dania, FL 33004