

39FT 2006 TIARA 3900 CONVERTIBLE — TIARA



Builder: TIARA

Year Built: 2006

Model: Motor Yacht

Price: PRICE ON APPLICATION

Location: Puerto Rico

LOA: 39' 0" (11.89m)

Beam: 14' 5" (4.39m)

Max Draft: 3' 8" (1.12m)

Cruise Speed: 26 Kts. (30 MPH)

Max Speed: 31 Kts. (36 MPH)

Our experienced yacht broker, Andrey Shestakov, will help you choose and buy a yacht that best suits your needs 39ft 2006 Tiara 3900 Convertible — TIARA from our catalogue. Presently, at Shestakov Yacht Sales Inc., we have a wide variety of yachts available on our sale's list. We also work in close contact with all the big yacht manufacturers from all over the world.

If you would like to buy a yacht 39ft 2006 Tiara 3900 Convertible — TIARA or would like help answering any questions concerning purchasing, selling or chartering a yacht, please call +1(954)274-4435

TABLE OF CONTENTS

TABLE OF CONTENTS	2
SPECIFICATIONS	5
Basic Information	5
Dimensions	5
Speed, Capacities and Weight	5
Accommodations	5
Hull and Deck Information	5
Engine Information	6
DETAILED INFORMATION	7
Manufacturer Provided Description	7
Exclusions	7
Disclaimer	7
PHOTOS	8
Port Side	8
Starboard Side	8
Forward View	8
Windlass	8
Aft View of the Cockpit	9
Aft Cockpit Freezer, Bilge Entry Door and Bait Station	9
Cockpit	9
Helm Chairs	9
Bridge Electronics	9
Helm	9
Raymarine E120 GPS / Radar (1unit)	10
Raymarine E120 GPS/Radar (2unit)	10
Cummins Display's , Raymarine Autopilot, Raymarine Depth Sounder	10
Bridge panel	10
Bridge Clarion Radio	11

Cummins QSB 540hp	11
Cuimmins QSB 540hp	11
Engine Room	11
Racor Water Separators	11
Generator	11
Glendenning Cablemaster	12
Oil Changing System	12
Mint Salon Upholstery and interiors	12
Salon	12
Dinette Wood Table	12
Salon	12
Salon Upholstery in excellent Conditions	13
Salon Sofa	13
Salon Wood Floor - Excellent Conditions	13
Salon Ceiling	13
Galley	13
Galley Mircowave	13
Perfect Condition Galley Wood Floor	14
Master Stateroom	14
2nd Stateroom Bunk Beds	14
Master Flat Screen TV	14
2nd stateroom Flat screen TV	15
Head	15
Head Shower	15
Engine Room Braker Panel	15
AC / DC Brakers Panel	16
Swim Platform Scratch	16
Bottom Paint	16
CONTACTS	17

Contact details	17
Telephones	17
Office hours	17
Address	17

SPECIFICATIONS

Basic Information

Category: Motor Yacht

Sub Category: Convertible

Model Year: 2006

Year Built: 2006

Country: Puerto Rico

Dimensions

LOA: 39' 0" (11.89m)

Beam: 14' 5" (4.39m)

Max Draft: 3' 8" (1.12m)

MFG Length: 41' 7" (12.67m)

Speed, Capacities and Weight

Cruise Speed: 26 Kts. (30 MPH)

Max Speed: 31 Kts. (36 MPH)

Displacement: 25540 Pounds

Water Capacity: 120 Gallons

Holding Tank: 40 Gallons

Fuel Capacity: 470 Gallons

Accommodations

Total Berths: 6

Total Heads: 1

Hull and Deck Information

Hull Material: Fiberglass

Engine Information

Engines: 2

Manufacturer: Cummins

Model: QSB 8.3L

Engine Type: Inboard

Fuel Type: Diesel

DETAILED INFORMATION

Manufacturer Provided Description

The Tiara 3900 Convertible is a rededication to the fly bridge sport fishing boat designed and manufactured for performance and function, all the while wrapped in a package with the comfort and style traits you expect from Tiara Yachts.<P>An unique hull design features a sheer that is low at the transom for reaching down to manage fish along side. No portlights, no style lines and a flare that will scare the water and send it running back to where it came from. Rough seas are no problem, but then again they never are in a Tiara Yacht. Clean, simple, functional, and fishy.<P>The cockpit abounds with serious fishing features and includes an optional transom baitwell, in-floor storage boxes, room for a fighting chair, standard and integrated bait prep center with optional freezer, tackle drawers and trays, and engine room access. Clean, simple, functional, and fishy.

Exclusions

Owner's personal belongings.

Disclaimer

The Company offers the details of this vessel or yacht in good faith but cannot guarantee or warrant the accuracy of this information nor warrant the condition of the vessel. A buyer should instruct his representatives, agents, or his surveyors, to investigate such details as the buyer desires validated. This vessel or yacht is offered subject to prior sale, price change, or withdrawal without notice.

PHOTOS

Port Side



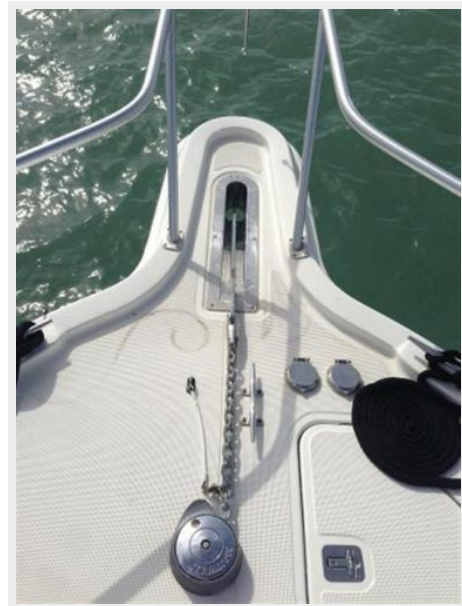
Starboard Side



Forward View



Windlass



Aft View of the Cockpit



Aft Cockpit Freezer, Bilge Entry Door and Bait Station



Cockpit



Helm Chairs



Bridge Electronics



Helm



Raymarine E120 GPS / Radar (1unit)



Raymarine E120 GPS/Radar (2unit)



**Cummins Display's , Raymarine Autopilot,
Raymarine Depth Sounder**



Bridge panel



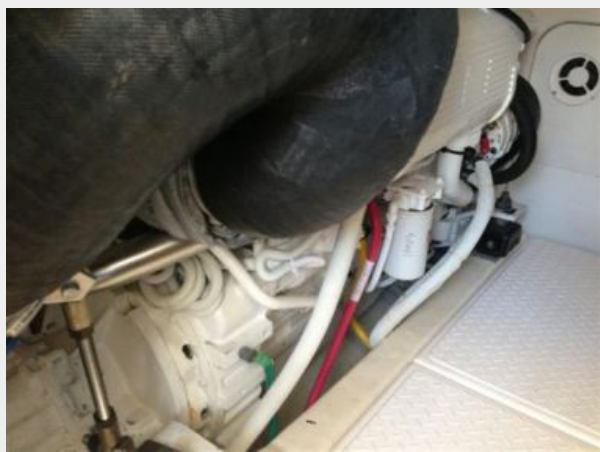
Bridge Clarion Radio



Cummins QSB 540hp



Cummins QSB 540hp



Engine Room



Racor Water Separators



Generator



Glendenning Cablemaster



Oil Changing System



Mint Salon Upholstery and interiors



Salon



Salon



Dinette Wood Table

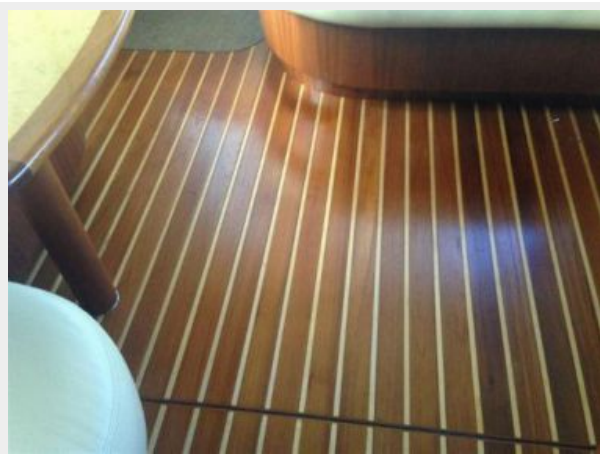


Salon Upholstery in excellent Conditions

Salon Sofa



Salon Wood Floor - Excellent Conditions



Salon Ceiling



Galley



Galley Microwave



Perfect Condition Galley Wood Floor



Master Stateroom



Master Flat Screen TV



2nd Stateroom Bunk Beds



2nd stateroom Flat screen TV



Head



Head Shower



Engine Room Braker Panel



AC / DC Brakers Panel



Swim Platform Scratch



Bottom Paint



CONTACTS

Andrey Shestakov, leading yacht broker of the sales department of Shestakov Yacht Sales Inc. Shestakov Yacht Sales Inc., the official representative of the Miami/Fort Lauderdale FL headquarters.

Contact details

Email: andrey@shestakovyachtsales.com

Web: shestakovyachtsales.com/en/

Telephones

USA: +1(954)274-4435

Office hours

Monday – Saturday: **9:00 - 21:00** EDT

Sunday: **closed**

Address



Harbour Towne Marina, 850 NE 3rd St,
STE 213, Dania, FL 33004