

36FT10IN 1989 GRAND BANKS 36 CLASSIC — GRAND BANKS



Судостроитель: GRAND BANKS

Год постройки: 1989

Модель: Траулер

Цена: ЦЕНА ЯХТЫ ПО ЗАПРОСУ

Местонахождение: Puerto Rico

Длина общая: 36' 0" (10.97m)

Ширина: 12' 8" (3.86m)

Макс. осадка: 4' 0" (1.22m)

Крейс. скорость: 11 Kts. (13 MPH)

Купить 36ft10in 1989 Grand Banks 36 Classic — GRAND BANKS а также выбрать подходящую вам яхту из нашего каталога яхт вам поможет опытный яхтенный брокер Андрей Шестаков. На сегодняшний день компания Shestakov Yacht Sales Inc. имеет большое количество яхт в собственном списке продаж, а также тесно сотрудничает со всеми крупными яхтенными производителями по всему миру.

Для того чтобы купить яхту 36ft10in 1989 Grand Banks 36 Classic — GRAND BANKS а также проконсультироваться по любому вопросу связанному с покупкой, продажей, чартером яхт позвоните по телефону **+7(918)465-66-44**.

ОГЛАВЛЕНИЕ

ОГЛАВЛЕНИЕ	2
ХАРАКТЕРИСТИКИ	5
Обзор	5
Основная информация	5
Размеры	5
Скорость, вместимость и масса	5
Размещение	5
Корпус и палуба	6
Информация о двигателе	6
ПОДРОБНОЕ ОПИСАНИЕ	7
Manufacturer Provided Description	7
Additional Information	8
Исключения	8
Отказ от ответственности	8
ФОТОГРАФИИ	9
Stbd View	9
Cockpit view	9
Swim Platform	9
Port View	9
Cabin Entry Door	10
Cabin Windows	10
Fiberglass Sidedeck with new non skid and white paint	10
Dinghy Shocks	10
Fwd Windows	11
Fwd View	11
Bow	11
Windlass	11
Helm	12

Bridge	12
Bridge Port Seats	12
New Bimini Top	12
Bridge Teak Floor	13
Bridge Custom Wood Table	13
New Aft Bimini Top	13
Aft Stateroom Door	13
Stbd Sidedeck	14
Bridge GPS	14
Lower Helm	14
Lower Helm VHF	14
Lower Helm Radar	15
Lower Helm Controls	15
Salon Sofa	15
Salon Table	15
Braker Panel	16
Galley Refrigerator	16
Ice Maker and Storage	16
Salon Table	16
Galley Microwave	17
Stove	17
Galley Countertop	17
Galley	17
Fwd Stateroom Steps	18
Fwd Stateroom Closet	18
Fwd Stateroom Storage	18
Fwd Stateroom Bed	18
Fwd Head	19
Fwd Head	19

Aft Stateroom	19
Aft Head	19
Aft Head	20
Aft Stateroom Closet	20
Aft Stateroom Storage	20
Aft Stateroom Bed I	20
Aft Stateroom Bed II	21
Cummins 210hp	21
Engine Room	21
Cummins 210hp	21
Water Heater	21
Onan 8.5kw Generator	21
Automatic Halon System	22
Battery Charger	22
Diesel Tank Transfer Valve	22
Fresh Water Transfer Valve	22
КОНТАКТЫ	23
Контактная информация	23
Телефоны	23
Время работы	23
Адрес	23

ХАРАКТЕРИСТИКИ

Обзор

Motivated Seller! *** NEW DIESEL AND FRESH WATER TANKS

This beautiful Grand Banks has been maintain as a baby! Everything on the boat is in excellent and good working conditions. Many upgrades and look's like new.

If you are looking for comfortable, safety and reliable this is your Trawler. Ready for delivery with fresh bottom paint. Cruise few month on the BVI's get in love and head to her new home.

DYSID:2741622

Основная информация

Тип судна: Траулер

Модельный год: 1989

Год постройки: 1989

Страна: Puerto Rico

Размеры

Длина общая: 36' 0" (10.97m)

Ширина: 12' 8" (3.86m)

Макс. осадка: 4' 0" (1.22m)

Трапы: 13' 1" (3.99m)

Длина привального бруса: 36' 0"
(10.97m)

Скорость, вместимость и масса

Крейс. скорость: 11 Kts. (13 MPH)

Водоизмещение: 26000 Pounds

Вместимость воды: 185 Gallons

Объем топливного бака: 400 Gallons

Размещение

Всего коек: 5

Корпус и палуба

Материал корпуса: Fiberglass

Комплектация корпуса: Semi-Displacement

Информация о двигателе

Двигатели: 2

Производитель: Cummins

Тип двигателя: Inboard

Тип топлива: Diesel

ПОДРОБНОЕ ОПИСАНИЕ

Manufacturer Provided Description

An all round seaworthy performer, the Grand Banks 36 Classic is capable of real deep water cruising. Long keel, 26,000 lb displacement, hard chine, and a deep forefoot hull provide stability and seaworthiness. The aft house superstructure incorporates a seat box which adds extra livable space inside the aft cabin. High bulwarks with sturdy teak handrails, the mastery of beautifully carved teak scrolls, stainless steel stanchions and grabrails on the house sides, anchor platform with anchor roller and bow pulpit, teak swim platform, transom boarding steps, wide side decks, port, starboard and stern boarding gates are some of the features standard on the Grand Banks 36. The flybridge offers a duplicate helmsman station with full instrumentation, venturi windscreen, and extra stowage beneath the console. An enclosed electronics locker next to the flybridge helm provides space to house essential electronics equipment. The long and wide flybridge has seating for six adults. Under the seats are teak slatted watertight stowage compartments. The fiberglass Grand Banks 36 is also luxurious. Teak joinery work by old-world hand craftsmen gives a practical beauty above and below decks. The cabin soles are teak parquet throughout. The main decks and flybridge are teak planked. Extensive locker and drawer space are made out of golden Burmese teak. The upholstery and drapes are selected to complement the warm look of the surrounding teak. The saloon is a spacious living area complete with solid teak yacht table, L-shaped settee, bar cabinet, and the helm station. Accessibility to the exterior and flybridge from the saloon is made easier with the presence of port and starboard saloon doors. Full instrumentation and the AC and DC panels are neatly recessed into the helm station. A full width teak console above the helm station provides space to house an array of electronics equipment. Three ply laminated safety glass windows all round provide full fore and aft visibility. The well equipped galley comes with hot and cold pressurized water system. The three-burner stove and oven, large stainless steel sink, dish locker and electric refrigerator are all conveniently located. The master stateroom aft has a double berth at starboard and a single berth at port with generous drawer space below. The adjoining toilet compartment is spacious and airy with full headroom. There is a separate shower stall with telephone-type shower, cultured marble counter top with built in sink, head, large mirror, and convenient storage space in the counter drawers and locker. The companionway in the aft stateroom leads to the aft deck. A neatly recessed stowaway teak ladder provides access to the aft deck via twin opening doors. The forward stateroom also has a large hanging locker and plenty of storage space. Its adjoining toilet compartment has full headroom, a large mirror, shower and cultured marble built in sink and sink counter top. Whether you are motoring around the bay or you're hundreds of miles at sea, quiet single or twin diesel engines are made quieter by the use of special engine room sound insulation. These smooth, heavy-duty engines provide long-range economical operation. GRAND BANK 36: Successor to the wooden 36 introduced in the 1960s, these boats enjoy the improvements and refinements of over 30 years. Known for seaworthiness and a comfortable ride, they are efficiently driven at 8.5 knots. Cruising at 12 knots is easily achieved with larger engines. Available in four deckhouse configurations, each with a number of interior layouts, the Classic features wide side decks, spacious lazarette, aft stateroom, and dinghy

storage. The Europa offers one-level living with a main saloon that opens to the deck and a protected cockpit. One or two staterooms are located forward. The Sedan's traditional, open cockpit is a favorite among cruisers who love to fish. For more spacious accommodations, the motoryacht features a large, full width aft stateroom with a walk-around bed, and an equally attractive forward stateroom with optional island bed. The GB36 is a living legend that has been refined to perfection.

Additional Information

This 36 have been upgrade with few important items:

- * 2 New Diesel Tanks 200 gal each with transfer valve
- * 3 New Fiberglass Water Tanks for a total of 185 gal. with transfer valve
- * 3 A/C Marine Air Units
- * Engine Room Automatic Fire Extinguisher System (Halon)
- * Smoke Detectors in all areas including engine room
- * New Bottom Paint in 2014
- * New Non Skid on sidedeck with white paint
- * Bridge Garmin 3210 GPS / Cgartplotter
- * Music Stereo with 8 speakers

Исключения

При продаже яхты исключаются личные вещи владельца.

Отказ от ответственности

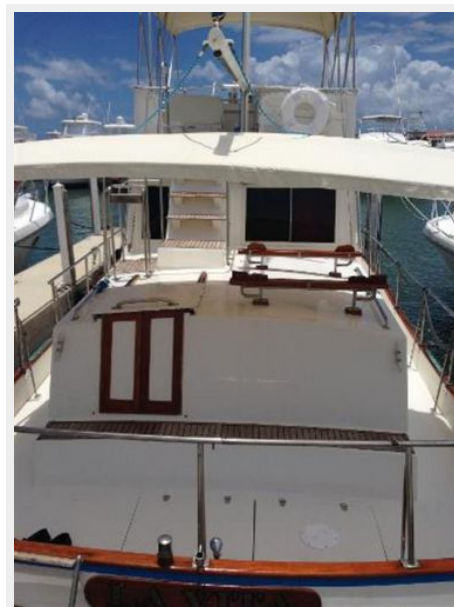
Компания предоставляет описание судна или яхты добросовестно, но не может гарантировать точность этой информации, а также не ручается за техническое состояние. Покупатель должен проинструктировать своих агентов или оценщиков исследовать представленную информацию более подробно, по собственному желанию. Продажа судна или яхты, изменение цены или снятие с продажи будет происходить без предварительного уведомления.

ФОТОГРАФИИ

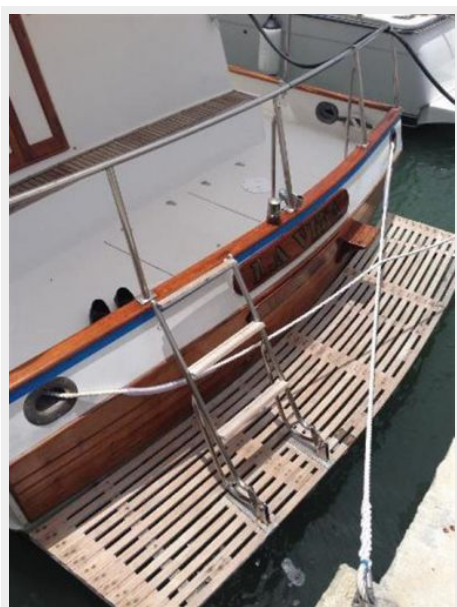
Stbd View



Cockpit view



Swim Platform



Port View



Cabin Entry Door



Cabin Windows



Fiberglass Sidedeck with new non skid and white paint

Dinghy Shocks



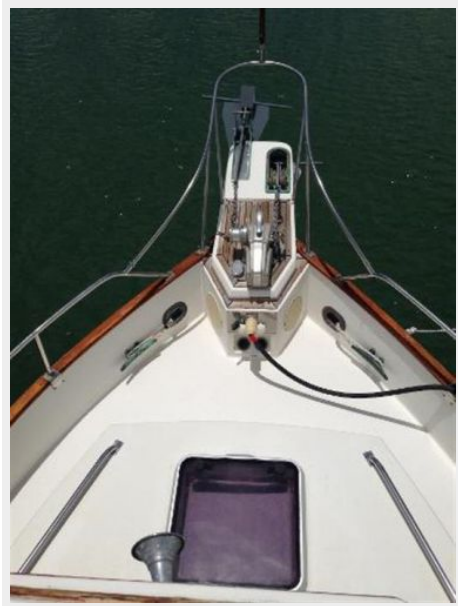
Fwd Windows



Fwd View



Bow



Windlass



Helm



Bridge



Bridge Port Seats



New Bimini Top



Bridge Custom Wood Table



Bridge Teak Floor



New Aft Bimini Top



Aft Stateroom Door



Stbd Sidedeck



Bridge GPS



Lower Helm



Lower Helm VHF



Lower Helm Radar



Lower Helm Controls



Salon Sofa



Salon Table



Braker Panel



Galley Refrigerator



Ice Maker and Storage



Salon Table



Galley Microwave



Stove



Galley Countertop



Galley



Fwd Stateroom Steps



Fwd Stateroom Closet



Fwd Stateroom Storage



Fwd Stateroom Bed



Fwd Head



Fwd Head



Aft Stateroom



Aft Head



Aft Head



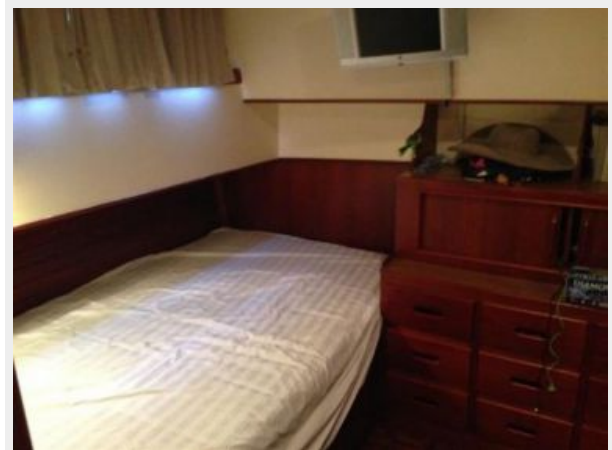
Aft Stateroom Closet



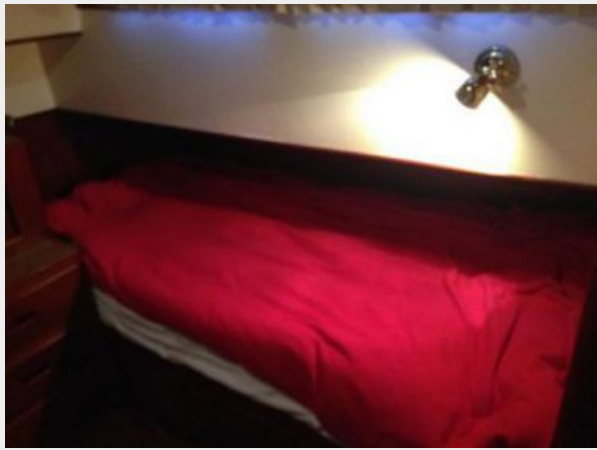
Aft Stateroom Storage



Aft Stateroom Bed I



Aft Stateroom Bed II



Cummins 210hp



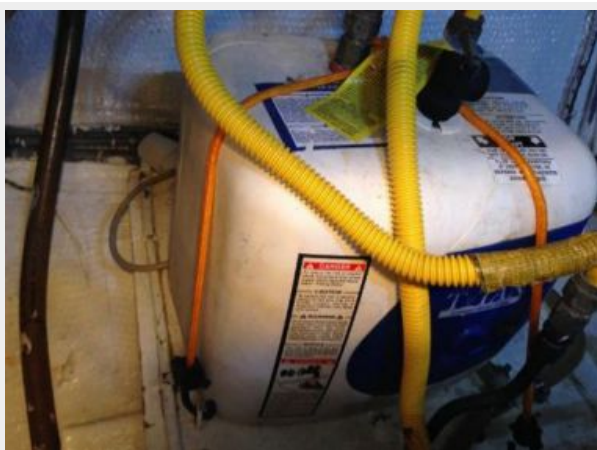
Engine Room



Cummins 210hp



Water Heater



Onan 8.5kw Generator



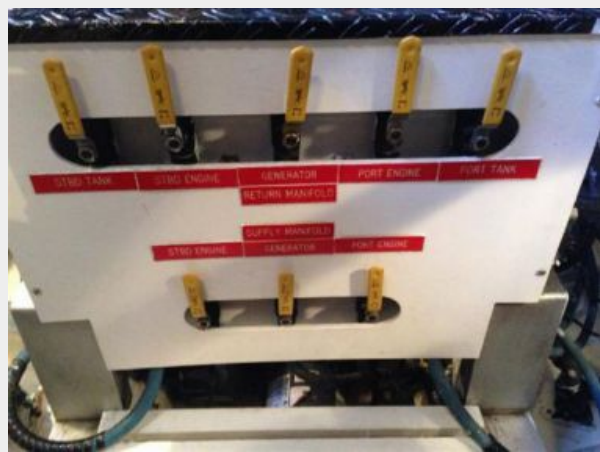
Automatic Halon System



Battery Charger



Diesel Tank Transfer Valve



Fresh Water Transfer Valve



КОНТАКТЫ

Андрей Шестаков (Andrey Shestakov) – ведущий яхтенный брокер отдела продаж яхт и судов компании Shestakov Yacht Sales Inc. Официальный представитель Shestakov Yacht Sales Inc. для русскоговорящих клиентов в центральном офисе компании в Майами/Форт Лодердейл/Флорида/США.

Контактная информация

Email: andrey@shestakovyachtsales.com

Web: shestakovyachtsales.com

Телефоны

Краснодарский край: **+7(918)465-66-44**

США, Майами, Флорида: **+1(954)274-4435**

Время работы

Понедельник – Суббота: **9:00 - 21:00**
EDT

Воскресенье: **Закрито**

Адрес



Harbour Towne Marina, 850 NE 3rd St,
STE 213, Dania, FL 33004