

ISLAND BOUND — CHRIS CRAFT



Builder: CHRIS CRAFT

Year Built: 1988

Model: Motor Yacht

Price: PRICE ON APPLICATION

Location: United States

LOA: 48' 0" (14.63m)

Beam: 14' 9" (4.50m)

Max Draft: 3' 6" (1.07m)

Cruise Speed: 12 Kts. (14 MPH)

Max Speed: 14 Kts. (16 MPH)

Our experienced yacht broker, Andrey Shestakov, will help you choose and buy a yacht that best suits your needs **Island Bound — CHRIS CRAFT** from our catalogue. Presently, at Shestakov Yacht Sales Inc., we have a wide variety of yachts available on our sale's list. We also work in close contact with all the big yacht manufacturers from all over the world.

If you would like to buy a yacht **Island Bound — CHRIS CRAFT** or would like help answering any questions concerning purchasing, selling or chartering a yacht, please call **+1(954)274-4435**

TABLE OF CONTENTS

TABLE OF CONTENTS	2
SPECIFICATIONS	4
Overview	4
Basic Information	4
Dimensions	4
Speed, Capacities and Weight	5
Accommodations	5
Hull and Deck Information	5
Engine Information	5
DETAILED INFORMATION	6
GENERAL	6
RESTORATION & IMPROVEMENTS AS OF Oct 2014	6
Salon	7
Galley	8
Flybridge	8
Master Stateroom	8
Guest Stateroom	8
Master Head	9
Electronics and Navigation Equipment	9
Electrical Equipment	9
Mechanical Equipment / Engines	10
Hull & Decks	10
Aft Sundeck	11
Cockpit	11
Other Features & Extra Equipment	11
Disclaimer	12
Exclusions	12
Disclaimer	12

PHOTOS	13
CONTACTS	16
Contact details	16
Telephones	16
Office hours	16
Address	16

SPECIFICATIONS

Overview

With almost \$200K in restoration between 2012 and 2014, this Chris-Craft 480 Catalina is a stunning bargain at the asking price of \$135,000 (JUST REDUCED!).

This 480 Catalina rides on a particularly good-running hull noted both for its efficiency and rough-water comfort. She is a handsome boat and is the cockpit version of the popular Chris Craft 426/427 Double Cabin model with extra fuel advantage. The six-foot cockpit extension to the hull length makes her a better looking boat and adds a knot or two to her performance.

The boat has the standard two-stateroom, guest forward and master aft (sleeps four), galley-down floorplan. The cockpit is large enough for some serious fishing, and the aft deck is quite spacious for entertaining a sizable number of guests.

Island Bound has been well cared for. She is fully equipped to leave at once on any serious long range cruise. Package includes an immense inventory of spare parts, spare props, dishes, full galley necessities, etc.

Basic Information

Category: Motor Yacht

Sub Category: Flybridge

Model Year: 1988

Year Built: 1988

Country: United States

Fly Bridge: Yes

Cockpit: Yes

Dimensions

LOA: 48' 0" (14.63m)

Beam: 14' 9" (4.50m)

Max Draft: 3' 6" (1.07m)

MFG Length: 48' 0" (14.63m)

Speed, Capacities and Weight

Cruise Speed: 12 Kts. (14 MPH)

Max Speed: 14 Kts. (16 MPH)

Displacement: 34000 Pounds

Water Capacity: 160 Gallons

Holding Tank: 35 Gallons

Fuel Capacity: 590 Gallons

Accommodations

Total Cabins: 2

Total Heads: 2

Hull and Deck Information

Hull Material: Fiberglass

Hull Color: White

Hull Designer: Chris Craft

Engine Information

Engines: 2

Manufacturer: Caterpillar

Model: 3208 TA

Engine Type: Inboard

Fuel Type: Diesel

DETAILED INFORMATION

GENERAL

The Chris Craft 480 Catalina Double Cabin is a safe and strong family yacht. The Catalina is also a traditional yacht: wide beamed and seakindly, with enough room for the whole clan to cruise comfortably. The Catalina line features the use of finished teak on all interior surfaces

RESTORATION & IMPROVEMENTS AS OF Oct 2014

New Electronics 2012

- New wiring & master breaker
- All New antennas
- New Icom M504 VHF Radio
- 2 Furuno 12" MFDs
- Furuno 12kW radar w/ 4' Open Array
- BBWX2 Sirius Satellite Weather
- Weatherfax & Navtex receiver
- MaxSea TimeZero nav software
- Simrad AP24 autopilot system
- Digital AM/FM Antenna
- Digital DC AM/FM Receiver & Amp
- McMurdo 406 GPS EPIRB
- ICOM 710 SSB (2001) – New antenna

Hull & Deck 2012 / 2014

- Complete hull and deck sanding and paint
- 3 new anchors (60# Ultra, CQR, Bruce), chain rode, and chain wheels
- 200 feet new rope road
- New helm canvas & aft deck screens
- New 12' RIB dinghy with 15hp engine and chocks
- New dive platform brackets - 2014
- New helm panel - 2012
- New holding tank - 2012
- Awlgrip paint / New non-skid
- New rubrail and seam seal - 2013
- New house & engine batteries
- New dinghy canvas – 2014
- New electric toilet - 2014

- New teak ladder steps - 2013

Major Engine Maintenance 2012 / 2014

- New 7.5kw Onan Generator
- All new hoses and belts - 2012
- 8 New engine mounts - 2014
- New cutlass bearings - 2014
- New drive shaft couplings - 2014
- New Drive Shaft - 2014
- New 100 gal mid-boat fuel tank – 2014
- Engine cooling system acid flush - 2012
- New drive shaft logs - 2014
- Reconditioned shaft spurs - 2014
- New Tide Seal shaft assemblies - 2014
- Both starters replaced - 2012
- 190 amp high output alternator rebuilt - 2014
- New engine thermostats - 2014

Furniture/Fixture Refit 2012 / 2014

- Re-upholstered captain and mate chairs - 2012
- Re-upholstered bridge settee - 2012
- New galley microwave and propane stove - 2012
- New settee, chairs, and carpeting throughout - 2012
- New mattresses, bed spreads, and stainless portals - 2012
- New forward hatch - 2012
- 2 New Found Metals stainless portals for forward cabin - 2012
- New blinds and LED salon lighting - 2013
- New fuel and water senders - 2013

Salon

Main Salon is quite large and very roomy for entertaining guests or just for relaxing and enjoying your cruise. The salon is carpeted and has a new leatherette sofa with storage to port and a leatherette chair with storage to aft and swiveling occasional chair to starboard. The salon is open & airy with blinds for privacy when needed.

- Stereo Equipment
- Large cabinet to starboard w/ice maker
- Entertainment Center with stereo AM/FM radio

Galley

Three(3) steps down from the Main Salon is the Galley with a convertible dinette to port. Dinette also doubles as a well equipped navigation station. The fully appointed L-shaped galley is opposite the dinette to starboard.

- Double stainless-steel sink
- Norcold refrigerator/freezer (2004)
- New 3-Burner propane stove with oven
- New microwave
- Splendide washer / dryer (2003)
- Teak cabinetry and drawer storage
- Teak parquet sole

Flybridge

- L-shaped bench seating
- Helm & companion chairs
- Large storage compartment under instrument panel
- Instrument panel (refer to bridge electronics)
- Full Bimini enclosure with U-shaped zippered windows

Master Stateroom

The Master Stateroom access is from the main salon, down three steps on the starboard side.

- Centerline Queen berth
- Private ensuite head
- Built-in vanity
- Ample drawers & lockers
- Full-length lighted locker
- Built-in storage throughout, port and starboard

Guest Stateroom

The guest stateroom could easily pass for the master stateroom in most boats. The centerline double berth with new custom mattress is forward with a cedar-lined locker storage. Ensuite head with shower is to port. Vanity/sink/dressing area is located to starboard.

- New electric Toilet with holding tank
- Lots of storage on shelves and in cabinets.
- Combination Splendide 110v washer/dryer below berth.

Master Head

- Ensuite VacuFlush toilet
- Spacious head with sink & counter space
- Bath tub/shower combination

Electronics and Navigation Equipment

Flybridge Electronics

- New wiring & master breaker
- All new antennas
- New ICOM M504 VHF Radio with hailer
- 2 Furuno 12" MFDs
- Furuno 12kW Radar with 4' Open Array
- BBWX2 Sirius Satellite Weather
- Weatherfax and Navtax Receiver
- MaxSea TimeZero nav software
- Simrad AP24 autopilot system
- Digital AM/FM Antenna
- Digital DC AM/FM Receiver and Amp
- McMurdo 406 GPS EPIRB
- ICOM 710 SSB (2001) - New Antenna 2012
- Ritchie 5" Compass
- Stainless Steel Destroyer Style Steering Wheel

Lower Nav Station

- ICOM 710-Single Side Band
- ICOM M502 VHF with SCS RT-Lite Email Connection (2002)
- Epson NX620 printer / scanner
- Nav Station has full engine gauges

- Shifters & Throttles in Opening Cabinet in Main Salon

Electrical Equipment

- New 7.5kW Onan Generator
- Yanmar Inverter:1800watts
- (2) Sentry battery chargers (one for house & one for starter batteries)
- (2) 8D house batteries

- (2) 8D starting batteries
- (1) 12V Generator starting battery
- AC/DC Electrical Panel to starboard
- Battery Rotary Switches provide for various combinations for starting
- (2) 50amp electrical inputs
- (2) 50Ft shore power cords
- Electrical system is 12V DC & 110V AC

Mechanical Equipment / Engines

Twin Caterpillar 3208TA (375HP) with 3000 hrs -In excellent condition. At 700 hours, the heads were pulled, injectors cleaned, and transmissions rebuilt.

- (3) Marine Air Conditioning units (salon, forward cabin, & aft cabin): (2) Digital reverse cycle (2001 / 2002)
- Bilge blowers
- (9) Automatic bilge pumps: (4) with cycle counters, high water alarm, & pump
- Halon fire extinguisher system in engine room
- Trim tabs
- Diesel tanks purged and cleaned (2014)
- Racor cartridge filters, engine spin-o filters
- (2) Extra Set of propellers
- Large inventory of spare parts
- Raw water sea strainers on Engines, Generator, and Air Conditioning units
- Hydraulic Steering
- Water capacity gauges
- Tide Seal shaft seals - 2014
- Shaft spurs

Hull & Decks

- Anchor: 60 lb CQR 200Ft 3/8" Chain
- Anchor: 55 lb Danforth 200Ft 3/8 Chain
- Anchor: 60 lb Bruce
- Anchor: 60 lb Ultra
- Bow Pulpit and rails
- Stainless Steel Side stanchions w/life lines
- Fenders & Lines
- Life Jackets/Rings
- Maxwell 2200 Electric Windlass
- Fiberglass Radar Arch
- New Bimini Top (2012)
- FB Swim Platform with boarding ladder

- Walkout transom door to swim platform
- Salt Water deck washdown system at bow
- Transom docking lights
- Navigation Lights
- Propane grill w/(2) 6 lb tanks
- Fender holders on bow rail
- Marquipt Boarding Ramp that accommodates Aft/Port/Starboard boarding

Aft Sundeck

- Unusually large aft sundeck which is great for entertaining
- Full screened enclosure which is in very good condition.
- Strong fiberglass Hard Top cover supports tender.
- (2) Large Dock Boxes for Storage
- Molded fiberglass steps lead up to the flybridge
- BBQ off the railing

Cockpit

This boat has a large cockpit which is perfect for serious fishing, swimming, diving, or just enjoying your fun-in-the-sun toys. Walk out the transom door to the large swim platform. Large lazarette in cockpit sole with door hatches revealing sound shielded Generator and storage area. Ladder leads up to the Aft Sun Deck

- Storage enclosure for propane tanks
- Hose up to BBQ unit on Sun Deck

Other Features & Extra Equipment

Other Features

- Vacuflush toilet
- Washer/dryer
- Second VHF radio at nav station
- Anchor washdown
- (3) Air conditioning units
- (4) Anchors
- (2) Extra Propellers

Extra Equipment

- Custom built dinghy cradle
- Daytona dingy lift with electric hoist mounted on Sundeck hardtop

Disclaimer

The Company offers the details of this vessel in good faith but cannot guarantee or warrant the accuracy of this information nor warrant the condition of the vessel. A buyer should instruct his agents, or his surveyors, to investigate such details as the buyer desires validated. This vessel is offered subject to prior sale, price change, or withdrawal without notice.

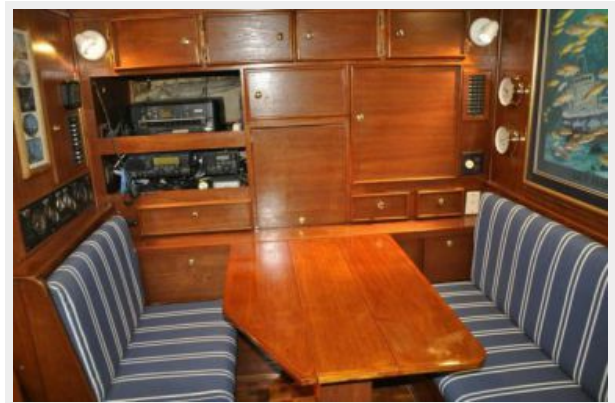
Exclusions

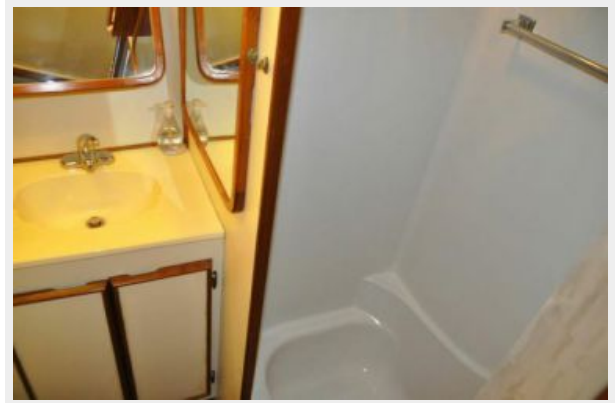
Owner's personal belongings.

Disclaimer

The Company offers the details of this vessel or yacht in good faith but cannot guarantee or warrant the accuracy of this information nor warrant the condition of the vessel. A buyer should instruct his representatives, agents, or his surveyors, to investigate such details as the buyer desires validated. This vessel or yacht is offered subject to prior sale, price change, or withdrawal without notice.

PHOTOS







CONTACTS

Andrey Shestakov, leading yacht broker of the sales department of Shestakov Yacht Sales Inc. Shestakov Yacht Sales Inc., the official representative of the Miami/Fort Lauderdale FL headquarters.

Contact details

Email: andrey@shestakovyachtsales.com

Web: shestakovyachtsales.com/en/

Telephones

USA: +1(954)274-4435

Office hours

Monday – Saturday: **9:00 - 21:00** EDT

Sunday: **closed**

Address



Harbour Towne Marina, 850 NE 3rd St,
STE 213, Dania, FL 33004