

# 31FT 1961 BERTRAM 31 SPORTFISHER — BERTRAM



**Builder:** BERTRAM

**Year Built:** 1961

**Model:** Motor Yacht

**Price:** PRICE ON APPLICATION

**Location:** Puerto Rico

**LOA:** 31' 0" (9.45m)

**Beam:** 11' 2" (3.40m)

**Max Draft:** 3' 1" (0.94m)

Our experienced yacht broker, Andrey Shestakov, will help you choose and buy a yacht that best suits your needs 31ft 1961 Bertram 31 Sportfisher — BERTRAM from our catalogue. Presently, at Shestakov Yacht Sales Inc., we have a wide variety of yachts available on our sale's list. We also work in close contact with all the big yacht manufacturers from all over the world.

If you would like to buy a yacht 31ft 1961 Bertram 31 Sportfisher — BERTRAM or would like help answering any questions concerning purchasing, selling or chartering a yacht, please call +1(954)274-4435

---

# TABLE OF CONTENTS

---

|                                |    |
|--------------------------------|----|
| TABLE OF CONTENTS              | 2  |
| SPECIFICATIONS                 | 3  |
| Basic Information              | 3  |
| Dimensions                     | 3  |
| Speed, Capacities and Weight   | 3  |
| Hull and Deck Information      | 3  |
| Engine Information             | 3  |
| PHOTOS                         | 4  |
| Sept 2014 Haul Out             | 5  |
| New floor sand                 | 7  |
| New cockpit paint              | 7  |
| New Bottom Paint on Sept. 2014 | 12 |
| Very well maintain hull        | 12 |
| CONTACTS                       | 13 |
| Contact details                | 13 |
| Telephones                     | 13 |
| Office hours                   | 13 |
| Address                        | 13 |

---

# SPECIFICATIONS

---

## Basic Information

---

**Category:** Motor Yacht

**Sub Category:** Convertible

**Model Year:** 1961

**Year Built:** 1961

**Country:** Puerto Rico

## Dimensions

---

**LOA:** 31' 0" (9.45m)

**Beam:** 11' 2" (3.40m)

**Max Draft:** 3' 1" (0.94m)

**MFG Length:** 30' 7" (9.32m)

## Speed, Capacities and Weight

---

**Displacement:** 10600 Pounds

**Water Capacity:** 18 Gallons

**Fuel Capacity:** 200 Gallons

## Hull and Deck Information

---

**Hull Material:** Fiberglass

## Engine Information

---

**Engines:** 2

**Manufacturer:** Caterpillar

**Model:** 3116

**Engine Type:** Inboard

**Fuel Type:** Diesel

# PHOTOS

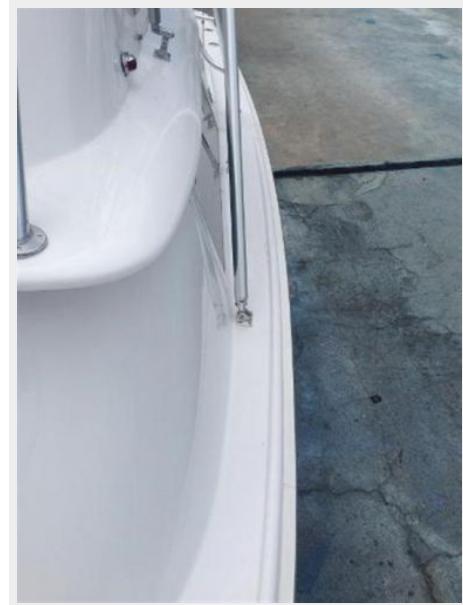
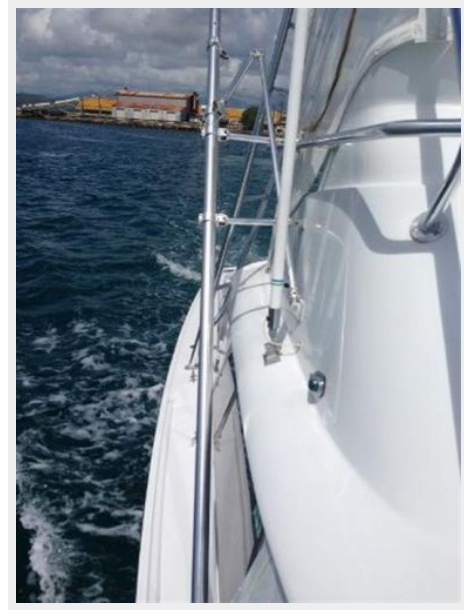




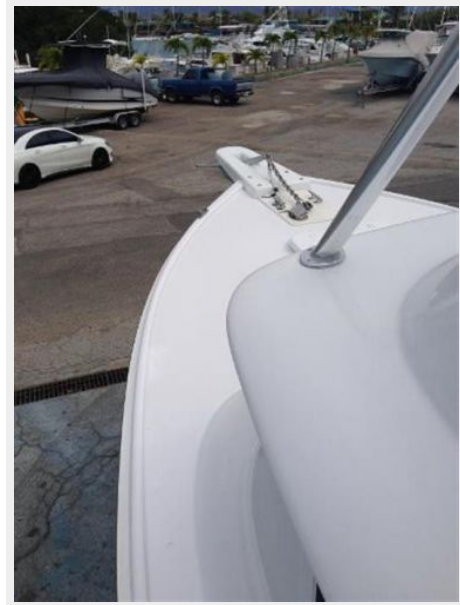
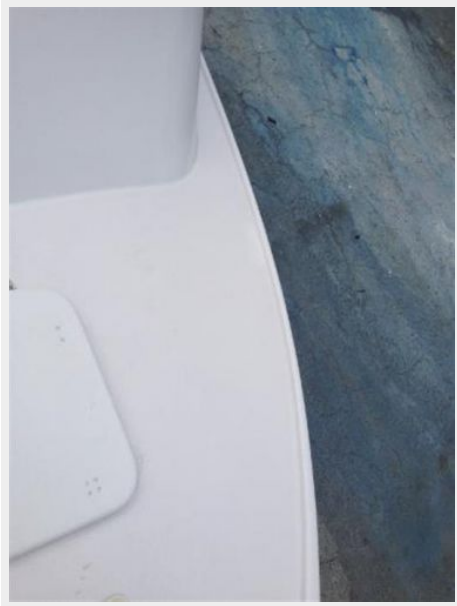
### Sept 2014 Haul Out







**New floor sand**

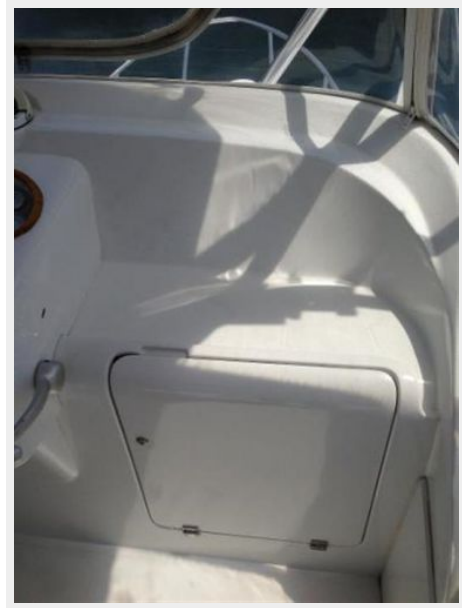


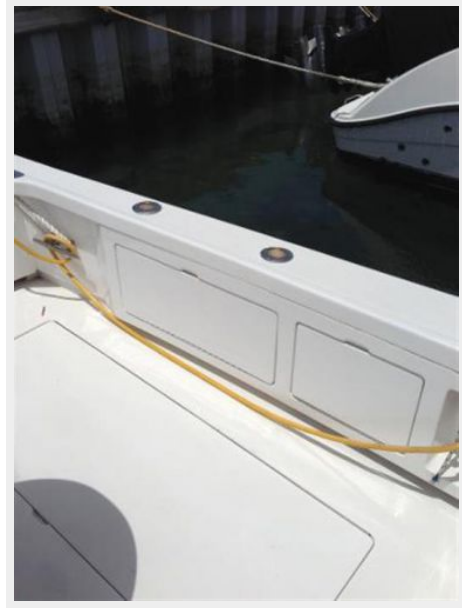
**New cockpit paint**

















**New Bottom Paint on Sept. 2014**



**Very well maintain hull**



# CONTACTS

---

Andrey Shestakov, leading yacht broker of the sales department of Shestakov Yacht Sales Inc. Shestakov Yacht Sales Inc., the official representative of the Miami/Fort Lauderdale FL headquarters.

## Contact details

---

Email: [andrey@shestakovyachtsales.com](mailto:andrey@shestakovyachtsales.com)

Web: [shestakovyachtsales.com/en/](http://shestakovyachtsales.com/en/)

## Telephones

---

USA: +1(954)274-4435

## Office hours

---

Monday – Saturday: **9:00 - 21:00** EDT

Sunday: **closed**

## Address

---



Harbour Towne Marina, 850 NE 3rd St,  
STE 213, Dania, FL 33004