

## BUCKYHAWK — PRINCESS YACHTS



**Builder:** PRINCESS YACHTS

**Year Built:** 2014

**Model:** Cruiser

**Price:** PRICE ON APPLICATION

**Location:** United States

**LOA:** 54' 6" (16.61m)

**Beam:** 14' 7" (4.44m)

**Max Draft:** 3' 6" (1.07m)

Our experienced yacht broker, Andrey Shestakov, will help you choose and buy a yacht that best suits your needs **BuckyHawk — PRINCESS YACHTS** from our catalogue. Presently, at Shestakov Yacht Sales Inc., we have a wide variety of yachts available on our sale's list. We also work in close contact with all the big yacht manufacturers from all over the world.

If you would like to buy a yacht **BuckyHawk — PRINCESS YACHTS** or would like help answering any questions concerning purchasing, selling or chartering a yacht, please call **+1(954)274-4435**

# TABLE OF CONTENTS

---

TABLE OF CONTENTS	2
SPECIFICATIONS	7
Overview	7
Basic Information	7
Dimensions	7
Speed, Capacities and Weight	7
Accommodations	7
Hull and Deck Information	7
Engine Information	8
DETAILED INFORMATION	9
Accommodation	9
Master Stateroom and Head	9
Forward Guest Stateroom and Head	9
Electronics	9
Inside Equipment	10
Electrical Equipment	10
Additional Electronic Equipment	10
Power and Drive System	10
Fuel System	11
Deck Fittings	11
Covers	11
Outside Equipment / Extras	11
Cockpit	11
Helm Position	12
Upper Salon	13
Lower Salon	13
Galley	13
Water System and Bilge Pumps	13

Other Standard Items	14
Optional Equipment	14
Exclusions	15
Disclaimer	15
PHOTOS	16
Runnng	16
Running	16
Running	16
Salon	16
Salon	16
Helm	16
Helm Seats	17
Aft Deck	17
Aft Deck	17
Aft Deck	17
Engine Room Access	17
Engine Room	17
Engine Room	18
Generator	18
Battery Charger	18
Batteries	18
Engine Room	18
Salon	18
Cockpit Appliances	19
Salon	19
Forward View	19
VIP Scissor Beds	19
Forward Head	19
VIP Stateroom	19

Forward Head	20
VIP Scissor Beds	20
Forward Head	20
Galley	20
Galley Stove and Microwave	20
Dinette Table	20
Dinette Table and Stairs to Salon	21
Master Stateroom	21
Master Stateroom	21
Master Stateroom	21
Master Stateroom	21
Master Shower	21
V 52	22
Salon Windows	22
Transom Gate	22
Salon Table	22
Salon Table	22
Lower Helm Station	22
Galley	23
Galley	23
Dinette Table	23
Dinette Table	23
Lower Helm Seats	23
Lower Helm	23
Master Stateroom	24
Master Stateroom	24
Master Head	24
Master Shower	24
Master Head	24

VIP Stateroom	24
VIP Head	25
VIP Stateroom	25
VIP Head	25
VIP Stateroom	25
VIP Stateroom	26
VIP TV	26
VIP Day Head	26
Ice Maker	26
Salon Refrigerator	27
Salon Camera	27
Cockpit Seating	27
SAT / Radar	27
Flybridge Sink and Grill	27
Washer / Dryer	27
Tied At Dock	28
Flybridge Storage	28
Engine Room	28
Engine Room	28
Engine Room	28
Flybridge Sink and Grill	28
Cockpit Speaker	29
Salon	29
Salon	29
Lower Hem Station	29
Lower Helm Station	29
Electrical Equipment	29
Engine Room	30
Galley Table	30

Television	30
Galley Table	30
Windshield / Hardtop	30
Windshield / Hardtop	30
Galley	31
Throttle Controls	31
VIP Stateroom	31
Dinette Table	31
Salon Camera	31
Master Stateroom	31
Master Stateroom	32
Master Stateroom	32
Galley	32
Galley	32
Master Stateroom	32
Companionway	32
Cockpit Door	33
SAT	33
SAT / Radar	33
Large Cleat	33
Anchor	33
VIP	33
Skylight / Hardtop	34
Sunbed	34
<b>CONTACTS</b>	<b>35</b>
Contact details	35
Telephones	35
Office hours	35
Address	35

---

# SPECIFICATIONS

---

## Overview

---

A 2014 Princess V52 with only 250 hours, extended CAT warranty, 250 CAT service completed, spare props, a great electronics package with SAT, cameras and entertainment gear. More to come on this great opportunity for a well equipped, late model Princess Express.

## Basic Information

---

**Category:** Cruiser

**Model Year:** 2014

**Year Built:** 2014

**Country:** United States

## Dimensions

---

**LOA:** 54' 6" (16.61m)

**Beam:** 14' 7" (4.44m)

**Max Draft:** 3' 6" (1.07m)

## Speed, Capacities and Weight

---

**Displacement:** 46297 Pounds

**Water Capacity:** 125 Gallons

**Fuel Capacity:** 728 Gallons

## Accommodations

---

**Total Cabins:** 2

**Total Berths:** 3

**Sleeps:** 6

**Total Heads:** 2

## Hull and Deck Information

---

**Hull Material:** Fiberglass

---

## Engine Information

---

**Manufacturer:** Caterpillar

**Model:** C12

**Engine Type:** Inboard

**Fuel Type:** Diesel



---

## DETAILED INFORMATION

---

### Accommodation

---

- All cabinets feature opening portholes and 240v power points
- All bathrooms feature electric quietflush toilets and 240v shaver points

### Master Stateroom and Head

---

- Large double bed with drawers below
- Wardrobe with shelves
- Drawers and storage lockers
- Overhead and individual berth lights
- Sofa
- Fixed and opening portlight
- Ensuite bathroom
- Wash basin with Monobloc mixer tap
- Separate shower cubicle
- Mirror
- Storage locker

### Forward Guest Stateroom and Head

---

- Scissors berths (double/single conversion)
- Wardrobe
- Deck hatch and fixed skylights with integrated fly screen and blind
- Storage lockers
- Downlighters and individual berth lights
- En-suite bathroom:
- Wash basin with Monoblock mixer tap
- Separate shower cubicle
- Mirror
- Storage locker

### Electronics

---

Radar CD player Autopilot DVD player VHF Compass GPS Depthsounder Cockpit speakers  
Plotter Radio TV (4) Navigation center

---

## Inside Equipment

---

Manual bilge pump Stern thruster Electric bilge pump Heating Refrigerator Battery charger Microwave oven Dishwasher Electric head Air conditioning Bow thruster Hot water Washing machine

---

## Electrical Equipment

---

- US electrical system, 120v/60hz throughout, including Duplex US outlets
- Air conditioning
- 4 x heavy duty batteries for engine starting
- 4 x heavy duty auxiliary batteries
- Engine alternators charge via split charge relays to isolate engine start batteries from auxiliaries
- 80 amp 24v float battery charger
- Battery paralleling system (for engine start back-up)
- Remote battery master switches with control switch at main panel
- Circuit breakers on all circuits
- Shore support inlet
- Generator/shore support change over switch
- Power points in master stateroom, forward guest stateroom, galley (double) and saloon
- Polarity check system
- Earth leakage safety trip
- Shaver points in both bathroom
- Automatic fire extinguisher in engine room and generator space
- Hand-operated fire extinguishers (4) in master stateroom, forward guest stateroom, galley and accommodation space

---

## Additional Electronic Equipment

---

This vessel is equipped with Security Monitoring Surveillance system, cameras including a reverse image camera for backing, 18" KVH satellite tv system, Garmin AIS Automated Identification System Transceiver, XM Weather Receiver.

---

## Power and Drive System

---

- Twin conventional engine installation driven through V drive gearboxes
- Engine room lighting
- Power-assisted steering
- Trim tabs with indicators and auto tab function
- Electronic engine controls
- Engine room extractor fans with electronic time delay

- Dripless shaft seals

---

## Fuel System

---

- Twin fuel tanks with interconnection system giving 528 US gallons capacity
- Fuel filters on both side decks
- High capacity fuel filter/water trap
- Remote fuel cocks in cockpit locker
- Fuel gauges on helm console

---

## Deck Fittings

---

- Reversible electric anchor winch with foredeck and helm position controls
- Self-stowing 44lb. Delta anchor with 40m chain
- Stemhead roller with automatic anchor launch and retrieve
- Stainless Steel bow, stern and spring cleats
- Stainless steel pulpit and guardrails
- Stainless steel coachroof handrails
- Foredeck hatch with integrated skylight
- Stainless steel rubbing bank with rubber insert
- Full set of IMCO navigation lights
- Riding light
- Remote control searchlight
- Twin electric horns
- Fuel and water fillers

---

## Covers

---

Cockpit cover

---

## Outside Equipment / Extras

---

Cockpit cushions Swimming ladder Cockpit shower Cockpit table Teak cockpit Electric windlass

---

## Cockpit

---

- Reversible electric anchor winch with foredeck and helm position controls
- Self-stowing 44lb. Delta anchor with 40m chain
- Stemhead roller with automatic anchor launch and retrieve

- Stainless Steel bow, stern and spring cleats
- Stainless steel pulpit and guardrails
- Stainless steel coachroof handrails
- Foredeck hatch with integrated skylight
- Stainless steel rubbing bank with rubber insert
- Full set of IMCO navigation lights
- Riding light
- Remote control searchlight
- Twin electric horns
- Fuel and water fillers

## Helm Position

---

- Self draining
- U-shaped seating/dining area (converts to sunbed)
- Folding teak table
- Overhead and low level courtesy lights
- Tonneau cover
- Stainless steel grabrails
- Cockpit wetbar with sink, top loading coolbox, storage, wastebin and optional barbeque
- Transom hatch to stern lazarette
- Access hatch to engine room
- 220/240v shore support inlet in locker
- Life raft locker
- Electro-hydraulic raise/lower transom platform with integrated swimming ladder

- Self draining
- U-shaped seating/dining area (converts to sunbed)
- Folding teak table
- Overhead and low level courtesy lights
- Tonneau cover
- Stainless steel grabrails
- Cockpit wetbar with sink, top loading coolbox, storage, wastebin and optional barbeque
- Transom hatch to stern lazarette
- Access hatch to engine room
- 220/240v shore support inlet in locker
- Life raft locker
- Electro-hydraulic raise/lower transom platform with integrated swimming ladder
- Self draining
- U-shaped seating/dining area (converts to sunbed)
- Folding teak table

- Overhead and low level courtesy lights
- Tonneau cover
- Stainless steel grabrails
- Cockpit wetbar with sink, top loading coolbox, storage, wastebin and optional barbeque
- Transom hatch to stern lazarette
- Access hatch to engine room
- 220/240v shore support inlet in locker
- Life raft locker
- Electro-hydraulic raise/lower transom platform with integrated swimming ladder

---

## Upper Salon

---

- U-shaped sofa
- Dining table
- Cocktail cabinet
- Overhead downlighters
- Electric opening roof
- Triple stainless steel framed sliding doors to cockpit
- Opening window (port)
- Radio/CD/MP3 with saloon and cockpit speakers

---

## Lower Salon

---

- L-shaped convertible sofa
- Dining table with telescopic support
- LED TV/DVD/radio/MP3
- Storage lockers
- Overhead downlighters
- Main electrical control panel with battery isolation switches

---

## Galley

---

- L-shaped convertible sofa
- Dining table with telescopic support
- LED TV/DVD/radio/MP3
- Storage lockers
- Overhead downlighters
- Main electrical control panel with battery isolation switches

---

## Water System and Bilge Pumps

---

- Water capacity totalling 96 US gallons including 13 gallon hot water calorifier
- Water heated by engine with 240v immersion heater
- Automatic water pump with filter
- Main circuit breaker at switch panel
- Water level guage
- Deck filler
- Automatic electric bilge pumps with manual override (3 switches) in engine room, forward accommodation and aft lazarette
- High capacity manual bilge pump with valve system and suction points in engine room and accommodation space

---

## Other Standard Items

---

- Fenders (6) and wraps (4)
- Ensign staff
- First aid kit
- Boathook
- Quilted bedspreads in both cabins
- Tool kit
- Manual handle for electric winch
- Harmon Kardon 5.1 Blueray System & KEF speakers
- TV, 32" LED in upper salon
- TV, 29" LED w/radio/DVD player in master stateroom
- TV, 22" LED w/radio/DVD player in forward stateroom
- Complete Linen package
- Complete set of china, cutlery and glasses (6)
- Pillow package for entire boat
- Hubbel cords

---

## Optional Equipment

---

- Generator upgrade to 13kw/60hz
- Oil change system for engines, transmissions and generator
- Hull color - white
- Salon table to be fold & convert to coffee table with electric powered pedestal leg
- Solar film fitted to underside of skylights
- Full height fridge/freezer in place of standard refrigeration
- Garbage disposal
- Glendinning cablemaster
- BBQ grill in cockpit wet bar
- Central Vacuum in lower salon
- Dimmer switch for deck salon lighting

- Dimmer switch for lower salon lighting
- Galvanic Isolator
- Icemaker in upper salon
- Refrigerator in upper salon sideboard unit
- Voltage stabilizer transformers (1)
- Washer/dryer fitted in lazarette
- TV, 32" LED with radio/DVD player in lower salon
- Garmin Electronics Package:
  - Garmin GPSMAP8212 Chartplotter/GPS at helm
  - Garmin GMR404 xHD 4k2 Open Array Radar
  - Garmin GMI10 Data Repeater in place of standard
  - Garmin Autopilot in place of standard
  - Garmin VHF 300 Handset VHF in place of standard
  - Ensure Garmin electronics are connected to engines
- Chase tube with mouse from radar arch to helm position
- Cockpit table cover
- Foredeck sunpad cushions in Movida Metallic
- Foredeck sunpad cushion cover
- Water delivery kit

---

## Exclusions

---

Owner's personal belongings.

---

## Disclaimer

---

The Company offers the details of this vessel or yacht in good faith but cannot guarantee or warrant the accuracy of this information nor warrant the condition of the vessel. A buyer should instruct his representatives, agents, or his surveyors, to investigate such details as the buyer desires validated. This vessel or yacht is offered subject to prior sale, price change, or withdrawal without notice.

# PHOTOS

Runnng



Running



Running



Salon



Salon



Helm





**Helm Seats**



**Aft Deck**



**Aft Deck**



**Aft Deck**



**Engine Room Access**



**Engine Room**



**Engine Room**



**Generator**



**Battery Charger**



**Batteries**



**Engine Room**



**Salon**



**Cockpit Appliances**



**Salon**



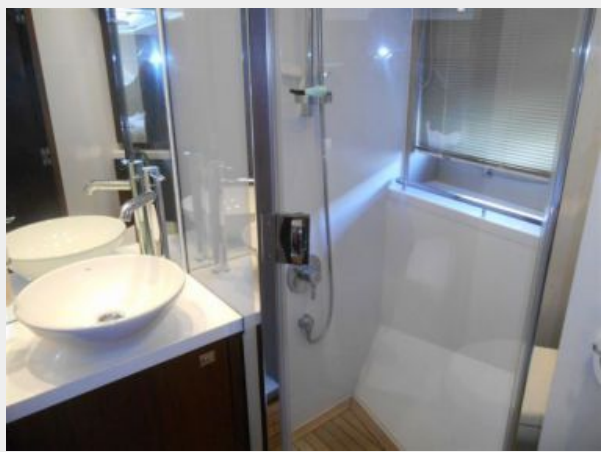
**Forward View**



**VIP Scissor Beds**



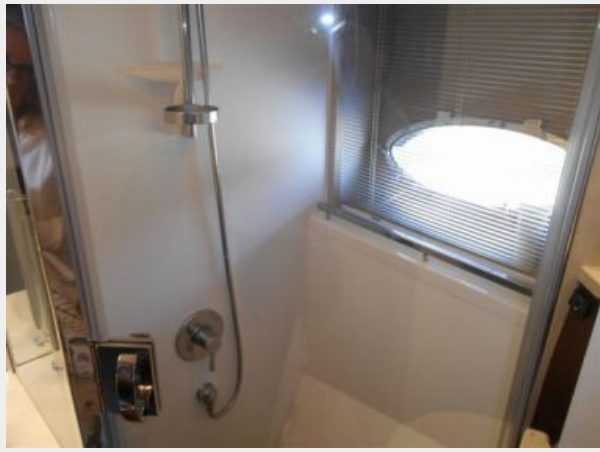
**Forward Head**



**VIP Stateroom**



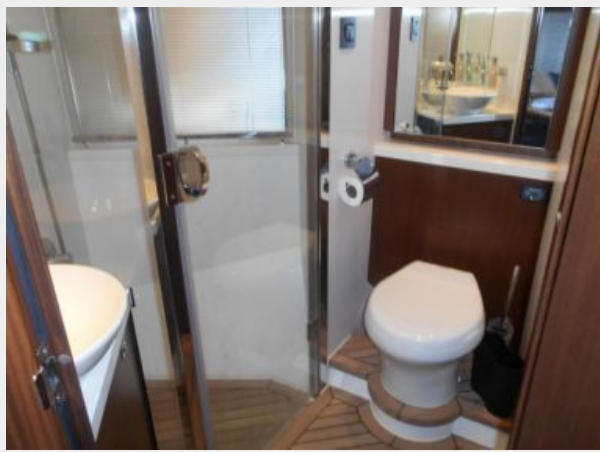
**Forward Head**



**VIP Scissor Beds**



**Forward Head**



**Galley**



**Galley Stove and Microwave**



**Dinette Table**



**Dinette Table and Stairs to Salon**



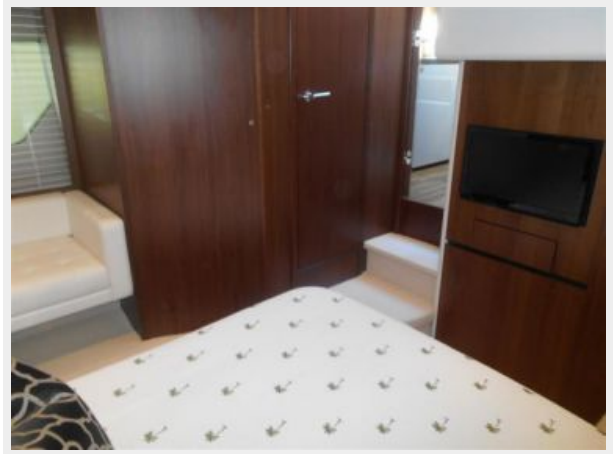
**Master Stateroom**



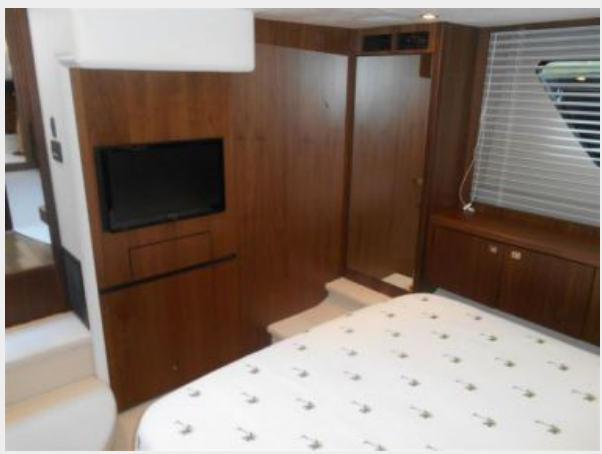
**Master Stateroom**



**Master Stateroom**



**Master Stateroom**



**Master Shower**



**V 52**



**Salon Windows**



**Transom Gate**



**Salon Table**



**Salon Table**



**Lower Helm Station**



**Galley**



**Galley**



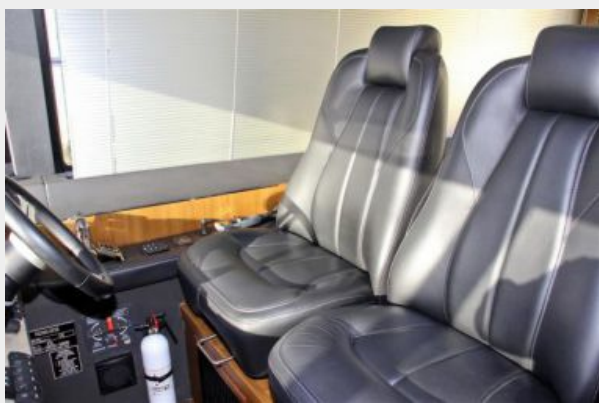
**Dinette Table**



**Dinette Table**



**Lower Helm Seats**



**Lower Helm**



**Master Stateroom**



**Master Stateroom**



**Master Head**



**Master Shower**



**Master Head**



**VIP Stateroom**





VIP Stateroom



VIP Head



VIP Head



VIP Stateroom



**VIP Stateroom**



**VIP TV**



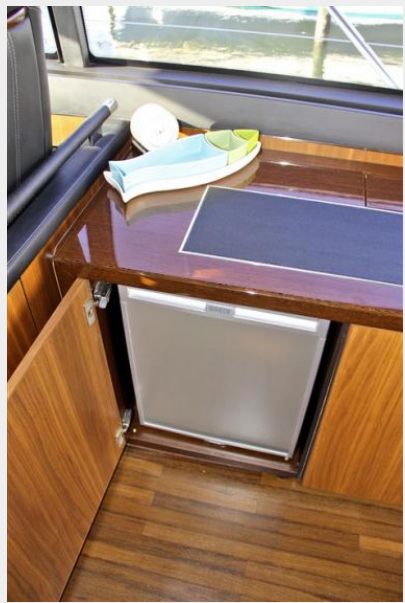
**VIP Day Head**



**Ice Maker**



**Salon Refrigerator**



**Salon Camera**



**Cockpit Seating**



**SAT / Radar**



**Flybridge Sink and Grill**



**Washer / Dryer**



**Tied At Dock**



**Flybridge Storage**



**Engine Room**



**Engine Room**



**Engine Room**



**Flybridge Sink and Grill**



**Cockpit Speaker**



**Salon**



**Salon**



**Lower Helm Station**



**Lower Helm Station**



**Electrical Equipment**



**Engine Room**



**Galley Table**



**Television**



**Galley Table**



**Windshield / Hardtop**



**Windshield / Hardtop**



**Galley**



**Throttle Controls**



**VIP Stateroom**



**Dinette Table**



**Salon Camera**



**Master Stateroom**



**Master Stateroom**



**Master Stateroom**



**Galley**



**Galley**



**Master Stateroom**



**Companionway**





**Cockpit Door**



**SAT**



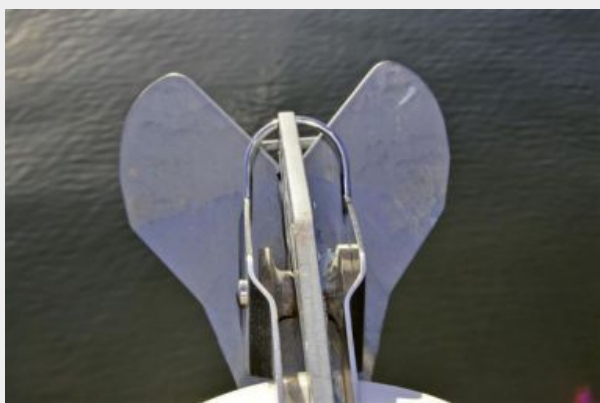
**SAT / Radar**



**Large Cleat**



**Anchor**



**VIP**



### Skylight / Hardtop



### Sunbed



# CONTACTS

---

Andrey Shestakov, leading yacht broker of the sales department of Shestakov Yacht Sales Inc. Shestakov Yacht Sales Inc., the official representative of the Miami/Fort Lauderdale FL headquarters.

## Contact details

---

Email: [andrey@shestakovyachtsales.com](mailto:andrey@shestakovyachtsales.com)

Web: [shestakovyachtsales.com/en/](http://shestakovyachtsales.com/en/)

## Telephones

---

USA: +1(954)274-4435

## Office hours

---

Monday – Saturday: **9:00 - 21:00** EDT

Sunday: **closed**

## Address

---



Harbour Towne Marina, 850 NE 3rd St,  
STE 213, Dania, FL 33004