

BUCKYHAWK — PRINCESS YACHTS



Судостроитель: PRINCESS YACHTS

Год постройки: 2014

Модель: Крейсер

Цена: **ЦЕНА ЯХТЫ ПО ЗАПРОСУ**

Местонахождение: United States

Длина общая: 54' 6" (16.61m)

Ширина: 14' 7" (4.44m)

Макс. осадка: 3' 6" (1.07m)

Купить BuckyHawk — PRINCESS YACHTS а также выбрать подходящую вам яхту из нашего каталога яхт вам поможет опытный яхтенный брокер Андрей Шестаков. На сегодняшний день компания Shestakov Yacht Sales Inc. имеет большое количество яхт в собственном списке продаж, а также тесно сотрудничает со всеми крупными яхтенными производителями по всему миру.

Для того чтобы купить яхту BuckyHawk — PRINCESS YACHTS а также проконсультироваться по любому вопросу связанному с покупкой, продажей, чартером яхт позвоните по телефону **+7(918)465-66-44**.

ОГЛАВЛЕНИЕ

ОГЛАВЛЕНИЕ	2
ХАРАКТЕРИСТИКИ	7
Обзор	7
Основная информация	7
Размеры	7
Скорость, вместимость и масса	7
Размещение	7
Корпус и палуба	7
Информация о двигателе	8
ПОДРОБНОЕ ОПИСАНИЕ	9
Accommodation	9
Master Stateroom and Head	9
Forward Guest Stateroom and Head	9
Electronics	9
Inside Equipment	10
Electrical Equipment	10
Additional Electronic Equipment	10
Power and Drive System	10
Fuel System	11
Deck Fittings	11
Covers	11
Outside Equipment / Extras	11
Cockpit	11
Helm Position	12
Upper Salon	13
Lower Salon	13
Galley	13
Water System and Bilge Pumps	13

Other Standard Items	14
Optional Equipment	14
Исключения	15
Отказ от ответственности	15
ФОТОГРАФИИ	16
Runnng	16
Running	16
Running	16
Salon	16
Salon	16
Helm	16
Helm Seats	17
Aft Deck	17
Aft Deck	17
Aft Deck	17
Engine Room Access	17
Engine Room	17
Engine Room	18
Generator	18
Battery Charger	18
Batteries	18
Engine Room	18
Salon	18
Cockpit Appliances	19
Salon	19
Forward View	19
VIP Scissor Beds	19
Forward Head	19
VIP Stateroom	19

Forward Head	20
VIP Scissor Beds	20
Forward Head	20
Galley	20
Galley Stove and Microwave	20
Dinette Table	20
Dinette Table and Stairs to Salon	21
Master Stateroom	21
Master Stateroom	21
Master Stateroom	21
Master Stateroom	21
Master Shower	21
V 52	22
Salon Windows	22
Transom Gate	22
Salon Table	22
Salon Table	22
Lower Helm Station	22
Galley	23
Galley	23
Dinette Table	23
Dinette Table	23
Lower Helm Seats	23
Lower Helm	23
Master Stateroom	24
Master Stateroom	24
Master Head	24
Master Shower	24
Master Head	24

VIP Stateroom	24
VIP Head	25
VIP Stateroom	25
VIP Head	25
VIP Stateroom	25
VIP Stateroom	26
VIP TV	26
VIP Day Head	26
Ice Maker	26
Salon Refrigerator	27
Salon Camera	27
Cockpit Seating	27
SAT / Radar	27
Flybridge Sink and Grill	27
Washer / Dryer	27
Tied At Dock	28
Flybridge Storage	28
Engine Room	28
Engine Room	28
Engine Room	28
Flybridge Sink and Grill	28
Cockpit Speaker	29
Salon	29
Salon	29
Lower Hem Station	29
Lower Helm Station	29
Electrical Equipment	29
Engine Room	30
Galley Table	30

Television	30
Galley Table	30
Windshield / Hardtop	30
Windshield / Hardtop	30
Galley	31
Throttle Controls	31
VIP Stateroom	31
Dinette Table	31
Salon Camera	31
Master Stateroom	31
Master Stateroom	32
Master Stateroom	32
Galley	32
Galley	32
Master Stateroom	32
Companionway	32
Cockpit Door	33
SAT	33
SAT / Radar	33
Large Cleat	33
Anchor	33
VIP	33
Skylight / Hardtop	34
Sunbed	34
КОНТАКТЫ	35
Контактная информация	35
Телефоны	35
Время работы	35
Адрес	35

ХАРАКТЕРИСТИКИ

Обзор

A 2014 Princess V52 with only 250 hours, extended CAT warranty, 250 CAT service completed, spare props, a great electronics package with SAT, cameras and entertainment gear. More to come on this great opportunity for a well equipped, late model Princess Express.

Основная информация

Тип судна: Крейсер

Модельный год: 2014

Год постройки: 2014

Страна: United States

Размеры

Длина общая: 54' 6" (16.61m)

Ширина: 14' 7" (4.44m)

Макс. осадка: 3' 6" (1.07m)

Скорость, вместимость и масса

Водоизмещение: 46297 Pounds

Вместимость воды: 125 Gallons

Объем топливного бака: 728 Gallons

Размещение

Всего кают: 2

Всего коек: 3

Спальные места: 6

Всего ком. состава: 2

Корпус и палуба

Материал корпуса: Fiberglass

Информация о двигателе

Производитель: Caterpillar

Модель: C12

Тип двигателя: Inboard

Тип топлива: Diesel

ПОДРОБНОЕ ОПИСАНИЕ

Accommodation

- All cabinets feature opening portholes and 240v power points
- All bathrooms feature electric quietflush toilets and 240v shaver points

Master Stateroom and Head

- Large double bed with drawers below
- Wardrobe with shelves
- Drawers and storage lockers
- Overhead and individual berth lights
- Sofa
- Fixed and opening portlight
- Ensuite bathroom
- Wash basin with Monobloc mixer tap
- Separate shower cubicle
- Mirror
- Storage locker

Forward Guest Stateroom and Head

- Scissors berths (double/single conversion)
- Wardrobe
- Deck hatch and fixed skylights with integrated fly screen and blind
- Storage lockers
- Downlighters and individual berth lights
- En-suite bathroom:
- Wash basin with Monoblock mixer tap
- Separate shower cubicle
- Mirror
- Storage locker

Electronics

Radar CD player Autopilot DVD player VHF Compass GPS Depthsounder Cockpit speakers
Plotter Radio TV (4) Navigation center

Inside Equipment

Manual bilge pump Stern thruster Electric bilge pump Heating Refrigerator Battery charger Microwave oven Dishwasher Electric head Air conditioning Bow thruster Hot water Washing machine

Electrical Equipment

- US electrical system, 120v/60hz throughout, including Duplex US outlets
- Air conditioning
- 4 x heavy duty batteries for engine starting
- 4 x heavy duty auxiliary batteries
- Engine alternators charge via split charge relays to isolate engine start batteries from auxiliaries
- 80 amp 24v float battery charger
- Battery paralleling system (for engine start back-up)
- Remote battery master switches with control switch at main panel
- Circuit breakers on all circuits
- Shore support inlet
- Generator/shore support change over switch
- Power points in master stateroom, forward guest stateroom, galley (double) and saloon
- Polarity check system
- Earth leakage safety trip
- Shaver points in both bathroom
- Automatic fire extinguisher in engine room and generator space
- Hand-operated fire extinguishers (4) in master stateroom, forward guest stateroom, galley and accommodation space

Additional Electronic Equipment

This vessel is equipped with Security Monitoring Surveillance system, cameras including a reverse image camera for backing, 18" KVH satellite tv system, Garmin AIS Automated Identification System Transceiver, XM Weather Receiver.

Power and Drive System

- Twin conventional engine installation driven through V drive gearboxes
- Engine room lighting
- Power-assisted steering
- Trim tabs with indicators and auto tab function
- Electronic engine controls
- Engine room extractor fans with electronic time delay

- Dripless shaft seals

Fuel System

- Twin fuel tanks with interconnection system giving 528 US gallons capacity
- Fuel filters on both side decks
- High capacity fuel filter/water trap
- Remote fuel cocks in cockpit locker
- Fuel gauges on helm console

Deck Fittings

- Reversible electric anchor winch with foredeck and helm position controls
- Self-stowing 44lb. Delta anchor with 40m chain
- Stemhead roller with automatic anchor launch and retrieve
- Stainless Steel bow, stern and spring cleats
- Stainless steel pulpit and guardrails
- Stainless steel coachroof handrails
- Foredeck hatch with integrated skylight
- Stainless steel rubbing bank with rubber insert
- Full set of IMCO navigation lights
- Riding light
- Remote control searchlight
- Twin electric horns
- Fuel and water fillers

Covers

Cockpit cover

Outside Equipment / Extras

Cockpit cushions Swimming ladder Cockpit shower Cockpit table Teak cockpit Electric windlass

Cockpit

- Reversible electric anchor winch with foredeck and helm position controls
- Self-stowing 44lb. Delta anchor with 40m chain
- Stemhead roller with automatic anchor launch and retrieve

- Stainless Steel bow, stern and spring cleats
- Stainless steel pulpit and guardrails
- Stainless steel coachroof handrails
- Foredeck hatch with integrated skylight
- Stainless steel rubbing bank with rubber insert
- Full set of IMCO navigation lights
- Riding light
- Remote control searchlight
- Twin electric horns
- Fuel and water fillers

Helm Position

- Self draining
- U-shaped seating/dining area (converts to sunbed)
- Folding teak table
- Overhead and low level courtesy lights
- Tonneau cover
- Stainless steel grabrails
- Cockpit wetbar with sink, top loading coolbox, storage, wastebin and optional barbeque
- Transom hatch to stern lazarette
- Access hatch to engine room
- 220/240v shore support inlet in locker
- Life raft locker
- Electro-hydraulic raise/lower transom platform with integrated swimming ladder

- Self draining
- U-shaped seating/dining area (converts to sunbed)
- Folding teak table
- Overhead and low level courtesy lights
- Tonneau cover
- Stainless steel grabrails
- Cockpit wetbar with sink, top loading coolbox, storage, wastebin and optional barbeque
- Transom hatch to stern lazarette
- Access hatch to engine room
- 220/240v shore support inlet in locker
- Life raft locker
- Electro-hydraulic raise/lower transom platform with integrated swimming ladder
- Self draining
- U-shaped seating/dining area (converts to sunbed)
- Folding teak table

- Overhead and low level courtesy lights
- Tonneau cover
- Stainless steel grabrails
- Cockpit wetbar with sink, top loading coolbox, storage, wastebin and optional barbeque
- Transom hatch to stern lazarette
- Access hatch to engine room
- 220/240v shore support inlet in locker
- Life raft locker
- Electro-hydraulic raise/lower transom platform with integrated swimming ladder

Upper Salon

- U-shaped sofa
- Dining table
- Cocktail cabinet
- Overhead downlighters
- Electric opening roof
- Triple stainless steel framed sliding doors to cockpit
- Opening window (port)
- Radio/CD/MP3 with saloon and cockpit speakers

Lower Salon

- L-shaped convertible sofa
- Dining table with telescopic support
- LED TV/DVD/radio/MP3
- Storage lockers
- Overhead downlighters
- Main electrical control panel with battery isolation switches

Galley

- L-shaped convertible sofa
- Dining table with telescopic support
- LED TV/DVD/radio/MP3
- Storage lockers
- Overhead downlighters
- Main electrical control panel with battery isolation switches

Water System and Bilge Pumps

- Water capacity totalling 96 US gallons including 13 gallon hot water calorifier
- Water heated by engine with 240v immersion heater
- Automatic water pump with filter
- Main circuit breaker at switch panel
- Water level guage
- Deck filler
- Automatic electric bilge pumps with manual override (3 switches) in engine room, forward accommodation and aft lazarette
- High capacity manual bilge pump with valve system and suction points in engine room and accommodation space

Other Standard Items

- Fenders (6) and wraps (4)
- Ensign staff
- First aid kit
- Boathook
- Quilted bedspreads in both cabins
- Tool kit
- Manual handle for electric winch
- Harmon Kardon 5.1 Blueray System & KEF speakers
- TV, 32" LED in upper salon
- TV, 29" LED w/radio/DVD player in master stateroom
- TV, 22" LED w/radio/DVD player in forward stateroom
- Complete Linen package
- Complete set of china, cutlery and glasses (6)
- Pillow package for entire boat
- Hubbel cords

Optional Equipment

- Generator upgrade to 13kw/60hz
- Oil change system for engines, transmissions and generator
- Hull color - white
- Salon table to be fold & convert to coffee table with electric powered pedestal leg
- Solar film fitted to underside of skylights
- Full height fridge/freezer in place of standard refrigeration
- Garbage disposal
- Glendinning cablemaster
- BBQ grill in cockpit wet bar
- Central Vacuum in lower salon
- Dimmer switch for deck salon lighting

- Dimmer switch for lower salon lighting
- Galvanic Isolator
- Icemaker in upper salon
- Refrigerator in upper salon sideboard unit
- Voltage stabilizer transformers (1)
- Washer/dryer fitted in lazarette
- TV, 32" LED with radio/DVD player in lower salon
- Garmin Electronics Package:
 - Garmin GPSMAP8212 Chartplotter/GPS at helm
 - Garmin GMR404 xHD 4k2 Open Array Radar
 - Garmin GMI10 Data Repeater in place of standard
 - Garmin Autopilot in place of standard
 - Garmin VHF 300 Handset VHF in place of standard
 - Ensure Garmin electronics are connected to engines
- Chase tube with mouse from radar arch to helm position
- Cockpit table cover
- Foredeck sunpad cushions in Movida Metallic
- Foredeck sunpad cushion cover
- Water delivery kit

Исключения

При продаже яхты исключаются личные вещи владельца.

Отказ от ответственности

Компания предоставляет описание судна или яхты добросовестно, но не может гарантировать точность этой информации, а также не ручается за техническое состояние. Покупатель должен проинструктировать своих агентов или оценщиков исследовать представленную информацию более подробно, по собственному желанию. Продажа судна или яхты, изменение цены или снятие с продажи будет происходить без предварительного уведомления.

ФОТОГРАФИИ

Runnng



Running



Running



Salon



Salon



Helm



Helm Seats



Aft Deck



Aft Deck



Aft Deck



Engine Room Access



Engine Room



Engine Room



Generator



Battery Charger



Batteries



Engine Room



Salon



Cockpit Appliances



Salon



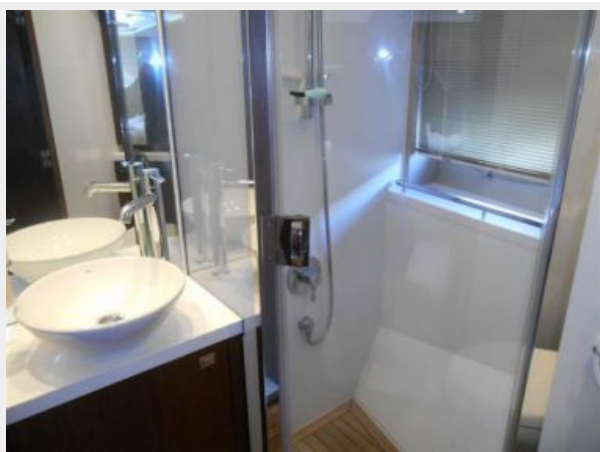
Forward View



VIP Scissor Beds



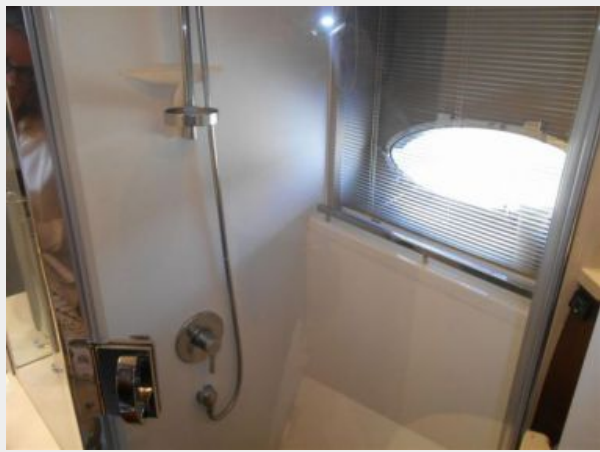
Forward Head



VIP Stateroom



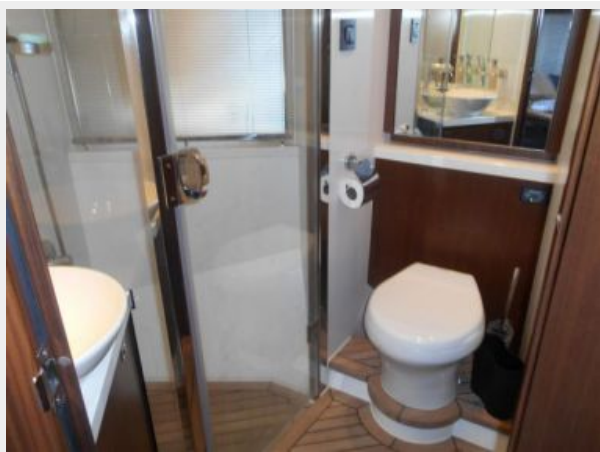
Forward Head



VIP Scissor Beds



Forward Head



Galley



Galley Stove and Microwave



Dinette Table



Dinette Table and Stairs to Salon



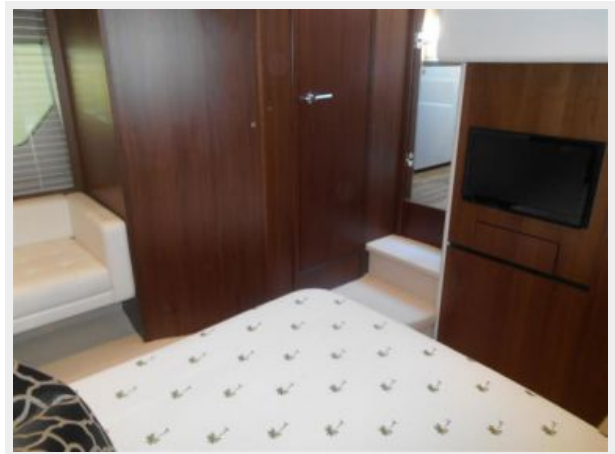
Master Stateroom



Master Stateroom



Master Stateroom



Master Stateroom



Master Shower



V 52



Salon Windows



Transom Gate



Salon Table



Salon Table



Lower Helm Station



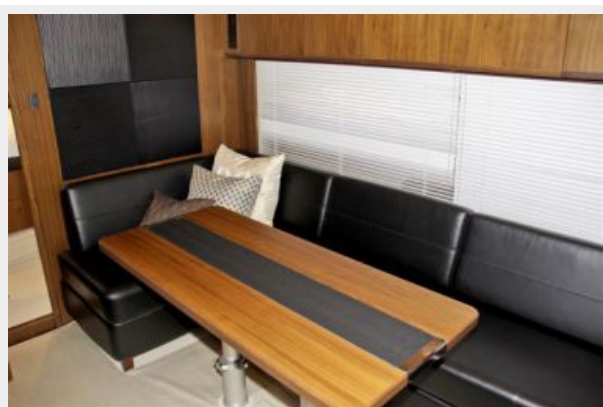
Galley



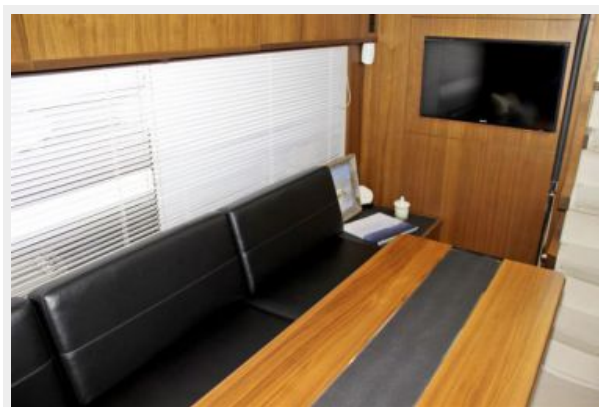
Galley



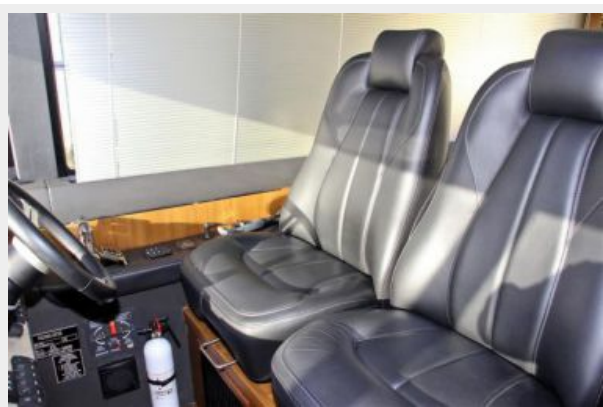
Dinette Table



Dinette Table



Lower Helm Seats



Lower Helm



Master Stateroom



Master Stateroom



Master Head



Master Shower



Master Head



VIP Stateroom



VIP Stateroom



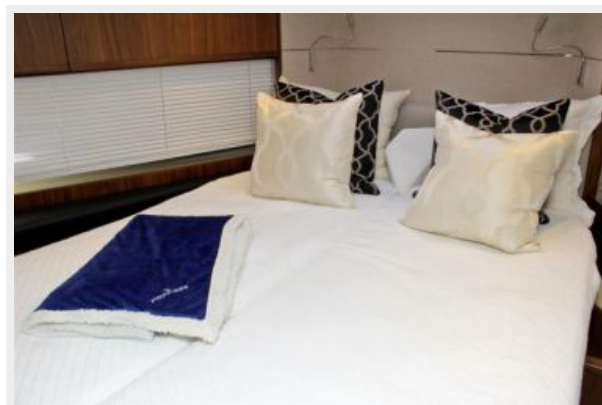
VIP Head



VIP Head



VIP Stateroom



VIP Stateroom



VIP TV



VIP Day Head



Ice Maker



Salon Refrigerator



Salon Camera



Cockpit Seating



SAT / Radar



Flybridge Sink and Grill



Washer / Dryer



Tied At Dock



Flybridge Storage



Engine Room



Engine Room



Engine Room



Flybridge Sink and Grill



Cockpit Speaker



Salon



Salon



Lower Helm Station



Lower Helm Station



Electrical Equipment



Engine Room



Galley Table



Television



Galley Table



Windshield / Hardtop



Windshield / Hardtop



Galley



Throttle Controls



VIP Stateroom



Dinette Table



Salon Camera



Master Stateroom



Master Stateroom



Master Stateroom



Galley



Galley



Master Stateroom



Companionway



Cockpit Door



SAT



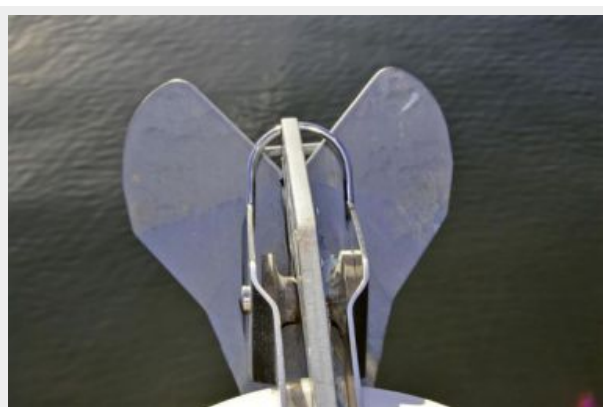
SAT / Radar



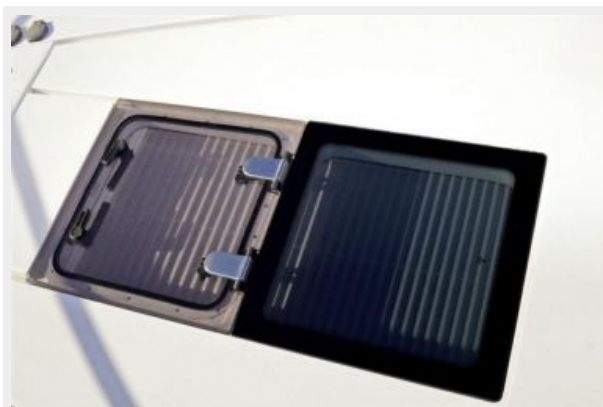
Large Cleat



Anchor



VIP



Skylight / Hardtop



Sunbed



КОНТАКТЫ

Андрей Шестаков (Andrey Shestakov) – ведущий яхтенный брокер отдела продаж яхт и судов компании Shestakov Yacht Sales Inc. Официальный представитель Shestakov Yacht Sales Inc. для русскоговорящих клиентов в центральном офисе компании в Майами/Форт Лодердейл/Флорида/США.

Контактная информация

Email: andrey@shestakovyachtsales.com

Web: shestakovyachtsales.com

Телефоны

Краснодарский край: **+7(918)465-66-44**

США, Майами, Флорида: **+1(954)274-4435**

Время работы

Понедельник – Суббота: **9:00 - 21:00**
EDT

Воскресенье: **Закрито**

Адрес



Harbour Towne Marina, 850 NE 3rd St,
STE 213, Dania, FL 33004