

## GAME ON — CABO



**Builder:** CABO

**Year Built:** 2008

**Model:** Sport Fisherman

**Price:** PRICE ON APPLICATION

**Location:** United States

**LOA:** 35' 0" (10.67m)

**Beam:** 13' 0" (3.96m)

**Max Draft:** 3' 0" (0.91m)

**Cruise Speed:** 28 Kts. (32 MPH)

Our experienced yacht broker, Andrey Shestakov, will help you choose and buy a yacht that best suits your needs **Game On — CABO** from our catalogue. Presently, at Shestakov Yacht Sales Inc., we have a wide variety of yachts available on our sale's list. We also work in close contact with all the big yacht manufacturers from all over the world.

If you would like to buy a yacht **Game On — CABO** or would like help answering any questions concerning purchasing, selling or chartering a yacht, please call **+1(954)274-4435**

# TABLE OF CONTENTS

---

TABLE OF CONTENTS	2
SPECIFICATIONS	3
Basic Information	3
Dimensions	3
Speed, Capacities and Weight	3
Accommodations	3
Hull and Deck Information	3
Engine Information	4
DETAILED INFORMATION	5
OVERVIEW	5
Exclusions	10
Disclaimer	10
PHOTOS	11
CONTACTS	18
Contact details	18
Telephones	18
Office hours	18
Address	18

# SPECIFICATIONS

## Basic Information

**Category:** Sport Fisherman

**Sub Category:** Convertible

**Model Year:** 2008

**Year Built:** 2008

**Country:** United States

**Fly Bridge:** Yes

**Cockpit:** Yes

## Dimensions

**LOA:** 35' 0" (10.67m)

**Beam:** 13' 0" (3.96m)

**Max Draft:** 3' 0" (0.91m)

## Speed, Capacities and Weight

**Cruise Speed:** 28 Kts. (32 MPH)

**Displacement:** 19500 Pounds

**Gross Tonnage:** 19500 Pounds

**Water Capacity:** 100 Gallons

**Fuel Capacity:** 400 Gallons

## Accommodations

**Total Cabins:** 2

**Total Heads:** 1

## Hull and Deck Information

**Hull Material:** Fiberglass

**Hull Configuration:** Modified V-Hull

**Hull Color:** White

**Hull Designer:** Cabo

## Engine Information

---

**Engines:** 2

**Manufacturer:** Cummins

**Model:** QSC8.3

**Engine Type:** Inboard

**Fuel Type:** Diesel

---

# DETAILED INFORMATION

---

## OVERVIEW

---

### Accommodations

Solid teak woodwork throughout is elegant and durable with carefully crafted cabinet doors. The salon provides a perfect environment for relaxing or entertaining in elegant comfort. Five can dine comfortably at the starboard settee, and there is additional seating located portside, aft of the galley. In the galley, Corian counter tops and sink, twin burner cooktop, large refrigerator, and convection microwave oven. There's access to storage beneath settees and behind bulkheads. In the master stateroom is a double island berth on centerline with easily accessed dry storage areas below. Two rod lockers forward conceal as many as 10 offshore rods with reels. A spacious head with separate stall shower is aft to starboard. Two additional single berths are located portside in the guest cabin. The cockpit is 130' and has a 50 gal bait tank located in the transom to save cockpit space. A tournament style flybridge features electronic controls, easy to read analog engine instrumentation, large console for electronics, helm and companion seats plus a forward bench seat with storage below.

**MAIN CABIN** The salon and galley provide hand-selected teak wood. The optional teak and holly floor provide for a luxurious finished detail.

- AC duplex outlet/GFI protected
- Access hatch to bilge
- Air conditioning/heating, 16,000 BTU, full interior
- Teak and Holly flooring
- Dining table, teak, double pedestal
- Entertainment center, built-in
- Fabrics and coverings, fine selection throughout
- Interior wood, teak, satin finish
- Latches, positive, cabinet doors and drawers
- Lighting, recessed halogen
- Mini-blinds, custom, throughout
- Rod storage, behind lounge seating
- Salon windows, fixed, tinted
- Settee, starboard, converts to double bed
- Settee, port
- Stereo, AM/FM/CD/DVD, speakers (2)
- TV, flat screen

**GALLEY** The galley features an abundance of storage with under counter refrigeration, two

burner cooktop and Corian countertops with molded in sinks. Adjacent to the galley is a U-shaped settee easily viewing the TV with coffee table.

- AC duplex outlet/GFI protected
- Cook top, ceramic, two-burner, recessed with Corian cover
- Corian countertop with custom Corian sea rails
- Latches, positive, cabinet doors and drawers
- Microwave/convection oven
- Refrigerator with top freezer, AC/DC
- Sink, custom
- Storage, compartments and drawers throughout
- Under cabinet lighting, recessed halogen

**STATEROOMS** The forward stateroom features a walk around queen berth forward with drawer storage underneath. Cedar lined hanging and storage compartments as well as rod storage above to port and starboard. To port, over/under berths provide additional accommodations.

- AC duplex outlet/GFI protected
- Access to anchor rope/chain locker
- Berth, double, island style, 5" mattress, bunk cover
- Foredeck hatch with retractable shade
- Latches, positive, cabinet doors and drawers
- Lighting, recessed halogen
- Locker, hanging, cedar-lined, port
- Storage, compartments and drawers below bed
- Storage, rod lockers (2), with horizontal rod racks
- TV, built-in

**HEAD** Like all Cabos the head is nicely contained and features a stall shower with Corian countertop and undermount sink.

- AC duplex outlet/GFI protected
- Air conditioning/heat vent, adjustable
- Corian countertop, custom
- Exhaust blower
- Head, Sealand Vacuflush, electric
- Holding tank monitor system
- Lighting, recessed halogen
- Opening port
- Shower stall, separate
- Toiletry storage cabinet, Corian-framed with sliding mirror doors
- Towel rack

- Vanity, custom, with storage cabinet

**FLYBRIDGE** The flybridge helm has twin helm chairs and seating forward. This boat is equipped with a fiberglass hardtop and three sided enclosure.

- Bench seat, forward of console, cushions and storage
- Bridge ladder and safety rails to match deck rails, custom welded
- Coaming padding, forward of seating area, high-density foam, vinyl covered
- Compass, with light, flush-mounted
- Configuration, tournament-style
- Electronics console, custom-molded
- Engine instrument panel, complete custom with audible warning system
- Fire and bilge water level alarms, audible
- Helm and companion chairs, Pompanette, pedestal-mounted, adjustable
- Helm wheel, stainless steel
- Rocket launchers, bridge rail, (5)
- Safety cabinet, first aid kit, fire extinguisher
- Storage, lockers, forward
- Storage, cabinet at helm
- Switch panel, custom, stainless steel

## ELECTRONICS

- Garmin 7212 GPS
- Raymarine E 120 color display
- Raymarine bottom machine with 50 and 200 KHZ Transducers
- Raymarine Radar 72 nm
- Simrad AP25 Auto pilot
- Icom M602 VHF
- Fusion XM stereo system
- ACR spotlight

## DECK

- Anchor roller assembly, recessed, custom stainless steel

- Bow chocks, 6" stainless steel
- Bow cleats, 12" stainless steel
- Bow pulpit, integral molded fiberglass
- Custom deck rails, aluminum
- Deck surface, molded-in, non-skid
- Molded fiberglass using polyester resin, biaxial stitched fabric reinforcement and core construction
- Molded-in white gelcoat finish
- Spring line cleats, 10" stainless steel
- Stern cleats, 12" stainless steel
- Stern hawse pipes, stainless steel
- Windlass, heavy-duty, DC electric, remote at bridge and deck switches

**COCKPIT** The 130 square foot cockpit includes a 40 gallon bait tank molded into the transom, fresh and saltwater washdown, and port and starboard cabinets run nearly the length of the cockpit.

- Aluminum reinforcing plate installed for mounting fighting chair
- Bait tank, 40-gallons, molded into transom
- Gunwale padding, high-density foam, white vinyl covered
- Courtesy lighting under gunwales and helm deck overhang
- Rod-gaff racks, port and starboard
- Rod holders
- Tackle center, units both port and starboard, fiberglass with polyplastic drawers, lockable molded fiberglass cover
- Transom door with top gate, extreme-duty, polished stainless steel hardware
- Washdowns, fresh-and saltwater
- Cockpit controls

**HULL** Cabo uses high-tech laminating processes to ensure tremendous hull and topside strength with highly sophisticated reinforced fiberglass interior modules adding a greater resistance to torsion and flexure.

- Molded fiberglass construction using premium vinylester resins and biaxial stitched fabric reinforcement; solid fiberglass bottom construction; core construction from upper chine to sheer
- Premium quality molded-in white gelcoat finish
- Stainless steel rub strip on face of white high-density PVC rub rail
- Trim tabs, fully recessed



**ENGINE/MECHANICAL** The Engine room is easy to access and maintain. The bilges are finished in white gelcoat with ample space for installation of additional equipment. The systems are meticulously organized, grouping major components, for ease of maintenance.

- Bilge, white gelcoat finished
- Bilge pumps (4), three automatic/manual, one automatic
- Double hose clamps on all hose fittings, stainless steel
- Emergency bilge pump diverter valve on one main engine
- Engine alarm system
- Engine hour meters (2)
- Engine room liner, white gelcoat finished
- Engine room blowers (2), DC
- Fire extinguishing system, automatic
- Freshwater cooling, main engines
- Freshwater hose bib, quick-disconnect
- Fuel filters, with water separators, main engines and generator, large capacity
- Fuel lines, metal braided, fire-retardant
- Fuel tank, fiberglass, fire-retardant vinylester resin
- Holding tank, 16 gal., warning lights, macerator and dockside discharge
- Rudders, bronze, high-strength
- Sea cocks, UL approved for marine application, bronze, fitted on all thru-hulls below waterline
- Steering system, hydraulic, Teleflex-Seastar
- Stuffing boxes, drip-less lip seal type
- Water heater, 11-gallon, AC, stainless steel
- Water intake scoops, bronze, high-speed, with integral seawater strainers
- ZF 280-1A Transmission

## **ELECTRICAL**

All wires are neatly bundled and follow perfect parallel lines.

- Westerbeke 7.6kw Generator, 1760 hours
- 50' shore cords (2), 30-amp shore power
- Automatic battery paralleling, backup switch at helm
- Batteries (5), heavy-duty
- Battery on/off switches, vapor-proof
- Bonded electrical system
- Circuit breaker protection throughout
- Battery charger, 70-amp, automatic with thermal cut out
- Distribution panel, custom, AC electrical, with line voltage and load meter, reverse polarity light
- Distribution panel, custom, DC electrical, with battery voltage and load meter

- Horn, dual air trumpet
- Lights, engine room, incandescent, DC, (2)
- Lights, navigation, international, uninstalled for future mounting on arch, hardtop or tower

**SAFETY EQUIPMENT** The Cabo comes standard with Safety Equipment, not normally provided by other Brands

- Anchor
- 25' chain
- 250' rode
- Fire extinguisher
- Docklines, fenders, distress signaling device, flashlight, emergency horn
- First aid kit and bell

## Exclusions

---

Owner's personal belongings.

## Disclaimer

---

The Company offers the details of this vessel or yacht in good faith but cannot guarantee or warrant the accuracy of this information nor warrant the condition of the vessel. A buyer should instruct his representatives, agents, or his surveyors, to investigate such details as the buyer desires validated. This vessel or yacht is offered subject to prior sale, price change, or withdrawal without notice.

# PHOTOS





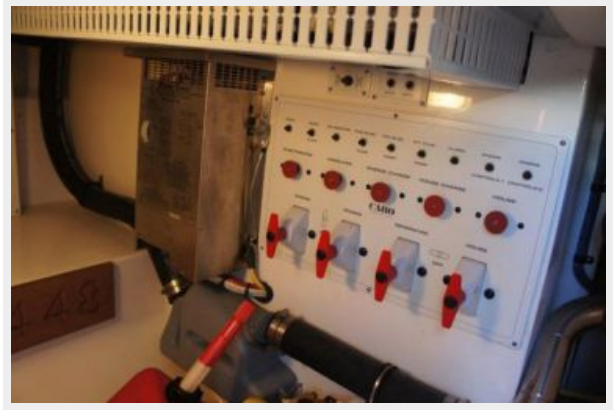
















# CONTACTS

---

Andrey Shestakov, leading yacht broker of the sales department of Shestakov Yacht Sales Inc. Shestakov Yacht Sales Inc., the official representative of the Miami/Fort Lauderdale FL headquarters.

## Contact details

---

Email:  
**andrey@shestakovyachtsales.com**

Web: [shestakovyachtsales.com/en/](http://shestakovyachtsales.com/en/)

## Telephones

---

USA: **+1(954)274-4435**

## Office hours

---

Monday – Saturday: **9:00 - 21:00 EDT**

Sunday: **closed**

## Address

---



Harbour Towne Marina, 850 NE 3rd St,  
STE 213, Dania, FL 33004