

ENGELBERG — AMELS



Builder: [AMELS](#)

Year Built: 2013

Model: Mega Yacht

Price: PRICE ON APPLICATION

Location: Italy

LOA: 180' 6" (55.00m)

Beam: 30' 11" (9.40m)

Min Draft: 11' 0" (3.35m)

Max Draft: 16' 1" (4.90m)

Cruise Speed: 13 Kts. (15 MPH)

Max Speed: 15 Kts. (17 MPH)

Our experienced yacht broker, Andrey Shestakov, will help you choose and buy a yacht that best suits your needs **Engelberg — AMELS** from our catalogue. Presently, at Shestakov Yacht Sales Inc., we have a wide variety of yachts available on our sale's list. We also work in close contact with all the big yacht manufacturers from all over the world.

If you would like to buy a yacht **Engelberg — AMELS** or would like help answering any questions concerning purchasing, selling or chartering a yacht, please call **+1(954)274-4435**

TABLE OF CONTENTS

TABLE OF CONTENTS	2
SPECIFICATIONS	5
Overview	5
Basic Information	6
Dimensions	6
Speed, Capacities and Weight	6
Accommodations	6
Hull and Deck Information	7
Engine Information	7
PHOTOS	8
Engelberg exterior	8
Engelberg exterior	8
Engelberg exterior	8
Engelberg exterior	8
Engelberg exterior	8
Engelberg exterior	8
Engelberg exterior	9
Engelberg exterior	9
Engelberg exterior	9
Engelberg exterior	9
Engelberg exterior	9
Engelberg exterior	9
Engelberg exterior	9
Engelberg exterior	10
Engelberg exterior	10
Engelberg Interior	10
Engelberg Interior	10
Engelberg Interior	10
Engelberg Interior	10

Engelberg Interior	11
Engelberg Interior	11
Engelberg Interior	11
Engelberg Interior	11
Engelberg Interior	11
Engelberg Interior	11
Engelberg Interior	12
Engelberg Interior	12
Engelberg Interior	12
Engelberg Interior	12
Engelberg Interior	12
Engelberg Interior	12
Engelberg Interior	12
Engelberg Interior	12
Engelberg Interior	13
Engelberg Interior	13
Engelberg Interior	13
Engelberg Interior	13
Engelberg Interior	13
Engelberg Interior	13
Engelberg Interior	13
Engelberg Interior	14
Engelberg Interior	14
Engelberg Interior	14
Engelberg Interior	14
Engelberg Interior	14
Engelberg Interior	14
Engelberg Interior	14
Engelberg Interior	15
Engelberg Interior	15
Engelberg Interior	15
Engelberg Interior	15
Engelberg Interior	15

Engelberg Interior	15
Engelberg Interior	16
Engelberg Interior	16
Engelberg	16
Engelberg	16
Engelberg Main Deck	16
Engelberg Sun Deck	16
Engelberg Main Deck	17
Engelberg Main Deck	17
Engelberg Sun Deck	17
Engelberg Sun Deck	17
Engelberg Jacuzzi	17
Engelberg Jacuzzi	17
Engelberg Jacuzzi	18
Engelberg Galley	18
Engelberg Engine Room	18
Engelberg Wheelhouse	18
Engelberg Engine Room	18
Engelberg exterior	18
Engelberg GA PLAN	19
Engelberg GA PLAN	19
CONTACTS	20
Contact details	20
Telephones	20
Office hours	20
Address	20

SPECIFICATIONS

Overview

The most customized Amels Limited Editions to date, ENGELBERG has been designed to perfectly meet her Owner's needs. Advanced personal communications systems, a unique aft deck layout, and a charcoal grey hull with a hint of orange make this yacht a true original. With stunning design by Enzo Enea, who blended the Mediterranean environment into the yacht's interior décor. There is a high level of customization throughout, including:

- A wide body sky lounge with sliding doors opening on to two French balconies.
- Two fold-out balconies on the main deck and a fold out balcony in the master cabin.
- A hydraulic bathing platform for easy boarding.
- A extra-large sun deck which doubles as a Touch and Go helipad

MASTER / OWNER'S CABIN The Master suite offers complete seclusion and autonomy. Comprising of a dressing room, bathroom, a Jacuzzi bath, full office and a private balcony.

GUEST CABINS Four unique guest cabins, all with en-suite bathroom, are found on the lower deck. Mirroring their environment each cabin has been styled with a superbly executed aquatic life theme.

MAIN DECK SALON With the Mediterranean Sea and coastlines as his muse, EnzoEnea has created an interior design that brings the landscape inside in an inspiring fusion of nature and design.

MAIN DECK DINING The formal dining area opens on either side onto folding balconies, allowing guests to enjoy ultimate service without missing the spectacular views.

BRIDGE DECK SALON Two French balconies compliment the open plan arrangement of the bridge-deck salon, harmonizing the plush lounge area, Steinway & Sons baby grand and office area with their natural surroundings.

BEACH CLUB Intricate sealife motif mosaic work and interior level finishing ensure that this beach club breathes fun and excitement. Complete with hammam, walk-in shower and easy storage for the sea-bob collection and water sports equipment inside, guests then step outside on to the swim platform, which is customized to fold out off the main aft platform and extend either down into the sea or up to the quay depending which way you are headed.

BRIDGE DECK AFT A vintage feel is lent to a comfortable and sheltered bridge-deck by a set of restored signal lights. The dining table resonates with the warm wood table in the bridge deck salon, and the coffee tables by the large sofa aft.

SUNDECK The immense sundeck is perfectly laid out providing lounging and social areas conceived for day and night. Plush circular seats aft lead to a long low table and seating area and bar. Between the bar and forward Jacuzzi and sun-lounging area, a carbon fibre sliding door can be closed against the breeze or to create two separate vibes. The forward sundeck features sun beds and at its prow a curved cushioned swivel seat with a view down over the sunbathing area on the bridge deck and the bow. The Jacuzzi and bar can be set up for all moods with customized lighting and sound systems.

ENTERTAINMENT & TOYS Waverunners, tenders, sea-bobs, inflatable pool, supersize slide. There is water action abound, or for a more relaxing water sports experience the fishing chair or diving equipment make the perfect Companions.

Basic Information

Category: Mega Yacht

Model Year: 2013

Year Built: 2013

Country: Italy

Fly Bridge: Yes

Helipad: Yes

Dimensions

LOA: 180' 6" (55.00m)

Beam: 30' 11" (9.40m)

Min Draft: 11' 0" (3.35m)

Max Draft: 16' 1" (4.90m)

Speed, Capacities and Weight

Cruise Speed: 13 Kts. (15 MPH)

Cruise Speed Range: 4500

Max Speed: 15 Kts. (17 MPH)

Max Speed RPM: 2100 Kts.

Gross Tonnage: 670 Pounds

Water Capacity: 4490.924884 Gallons

Fuel Capacity: 30379.78598 Gallons

Accommodations

Total Cabins: 5

Sleeps: 14

Captain Cabin: True

Crew Cabin: 8

Crew Sleeps: 15

Hull and Deck Information

Hull Material: Steel

Deck Material: Teak

Hull Designer: Tim Heywood

Exterior Designer: Tim Heywood

Interior Designer: Enzo Enea / Focus Yacht
Design

Engine Information

Engines: 2

Manufacturer: MTU

Model: 2000 M70 16 V

Engine Type: Inboard

Fuel Type: Diesel

PHOTOS

Engelberg exterior



Engelberg exterior



Engelberg exterior



Engelberg exterior



Engelberg exterior



Engelberg exterior



Engelberg exterior



Engelberg exterior



Engelberg exterior



Engelberg exterior



Engelberg exterior



Engelberg exterior



Engelberg exterior



Engelberg exterior



Engelberg Interior



Engelberg Interior



Engelberg Interior



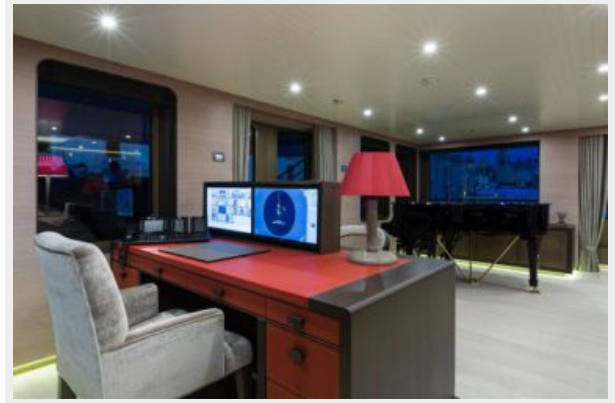
Engelberg Interior



Engelberg Interior



Engelberg Interior



Engelberg Interior



Engelberg Interior



Engelberg Interior



Engelberg Interior



Engelberg Interior



Engelberg Interior



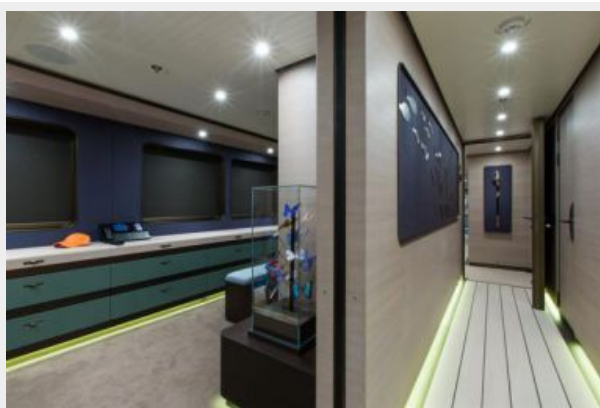
Engelberg Interior



Engelberg Interior



Engelberg Interior



Engelberg Interior



Engelberg Interior



Engelberg Interior



Engelberg Interior



Engelberg Interior



Engelberg Interior



Engelberg Interior



Engelberg Interior



Engelberg Interior



Engelberg Interior



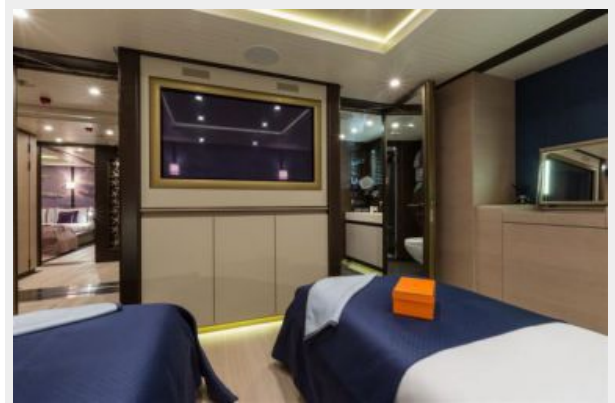
Engelberg Interior



Engelberg Interior



Engelberg Interior



Engelberg Interior



Engelberg Interior



Engelberg Interior



Engelberg Interior



Engelberg Interior



Engelberg Interior



Engelberg Interior



Engelberg Interior



Engelberg



Engelberg



Engelberg Sun Deck



Engelberg Main Deck



Engelberg Main Deck



Engelberg Main Deck



Engelberg Sun Deck



Engelberg Sun Deck



Engelberg Jacuzzi



Engelberg Jacuzzi



Engelberg Jacuzzi



Engelberg Galley



Engelberg Wheelhouse



Engelberg Engine Room



Engelberg Engine Room



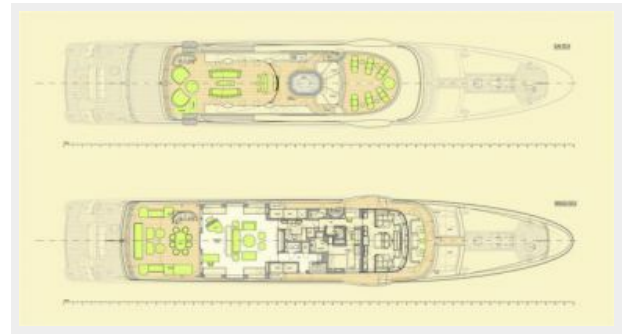
Engelberg exterior



Engelberg GA PLAN



Engelberg GA PLAN



CONTACTS

Andrey Shestakov, leading yacht broker of the sales department of Shestakov Yacht Sales Inc. Shestakov Yacht Sales Inc., the official representative of the Miami/Fort Lauderdale FL headquarters.

Contact details

Email: andrey@shestakovyachtsales.com

Web: shestakovyachtsales.com/en/

Telephones

USA: +1(954)274-4435

Office hours

Monday – Saturday: **9:00 - 21:00** EDT

Sunday: **closed**

Address



Harbour Towne Marina, 850 NE 3rd St,
STE 213, Dania, FL 33004