

ENGELBERG — AMELS



Судостроитель: AMELS

Год постройки: 2013

Модель: Мега-яхта

Цена: **ЦЕНА ЯХТЫ ПО ЗАПРОСУ**

Местонахождение: Italy

Длина общая: 180' 6" (55.00m)

Ширина: 30' 11" (9.40m)

Мин. осадка: 11' 0" (3.35m)

Макс. осадка: 16' 1" (4.90m)

Крейс. скорость: 13 Kts. (15 MPH)

Макс. скорость: 15 Kts. (17 MPH)

Купить **Engelberg — AMELS** а также выбрать подходящую вам яхту из нашего каталога яхт вам поможет опытный яхтенный брокер Андрей Шестаков. На сегодняшний день компания **Shestakov Yacht Sales Inc.** имеет большое количество яхт в собственном списке продаж, а также тесно сотрудничает со всеми крупными яхтенными производителями по всему миру.

Для того чтобы купить яхту **Engelberg — AMELS** а также проконсультироваться по любому вопросу связанному с покупкой, продажей, чартером яхт позвоните по телефону **+7(918)465-66-44**.

ОГЛАВЛЕНИЕ

ОГЛАВЛЕНИЕ	2
ХАРАКТЕРИСТИКИ	5
Обзор	5
Основная информация	6
Размеры	6
Скорость, вместимость и масса	6
Размещение	6
Корпус и палуба	7
Информация о двигателе	7
ФОТОГРАФИИ	8
Engelberg exterior	8
Engelberg exterior	8
Engelberg exterior	8
Engelberg exterior	8
Engelberg exterior	8
Engelberg exterior	8
Engelberg exterior	9
Engelberg exterior	9
Engelberg exterior	9
Engelberg exterior	9
Engelberg exterior	9
Engelberg exterior	9
Engelberg exterior	9
Engelberg exterior	10
Engelberg exterior	10
Engelberg Interior	10
Engelberg Interior	10
Engelberg Interior	10
Engelberg Interior	10

Engelberg Interior	11
Engelberg Interior	11
Engelberg Interior	11
Engelberg Interior	11
Engelberg Interior	11
Engelberg Interior	11
Engelberg Interior	12
Engelberg Interior	12
Engelberg Interior	12
Engelberg Interior	12
Engelberg Interior	12
Engelberg Interior	12
Engelberg Interior	12
Engelberg Interior	12
Engelberg Interior	12
Engelberg Interior	13
Engelberg Interior	13
Engelberg Interior	13
Engelberg Interior	13
Engelberg Interior	13
Engelberg Interior	13
Engelberg Interior	13
Engelberg Interior	13
Engelberg Interior	13
Engelberg Interior	14
Engelberg Interior	14
Engelberg Interior	14
Engelberg Interior	14
Engelberg Interior	14
Engelberg Interior	14
Engelberg Interior	14
Engelberg Interior	14
Engelberg Interior	15
Engelberg Interior	15
Engelberg Interior	15
Engelberg Interior	15
Engelberg Interior	15

Engelberg Interior	15
Engelberg Interior	16
Engelberg Interior	16
Engelberg	16
Engelberg	16
Engelberg Main Deck	16
Engelberg Sun Deck	16
Engelberg Main Deck	17
Engelberg Main Deck	17
Engelberg Sun Deck	17
Engelberg Sun Deck	17
Engelberg Jacuzzi	17
Engelberg Jacuzzi	17
Engelberg Jacuzzi	18
Engelberg Galley	18
Engelberg Engine Room	18
Engelberg Wheelhouse	18
Engelberg Engine Room	18
Engelberg exterior	18
Engelberg GA PLAN	19
Engelberg GA PLAN	19
КОНТАКТЫ	20
Контактная информация	20
Телефоны	20
Время работы	20
Адрес	20

ХАРАКТЕРИСТИКИ

Обзор

The most customized Amels Limited Editions to date, ENGELBERG has been designed to perfectly meet her Owner's needs. Advanced personal communications systems, a unique aft deck layout, and a charcoal grey hull with a hint of orange make this yacht a true original. With stunning design by Enzo Enea, who blended the Mediterranean environment into the yacht's interior décor. There is a high level of customization throughout, including:

- A wide body sky lounge with sliding doors opening on to two French balconies.
- Two fold-out balconies on the main deck and a fold out balcony in the master cabin.
- A hydraulic bathing platform for easy boarding.
- A extra-large sun deck which doubles as a Touch and Go helipad

MASTER / OWNER'S CABIN The Master suite offers complete seclusion and autonomy. Comprising of a dressing room, bathroom, a Jacuzzi bath, full office and a private balcony.

GUEST CABINS Four unique guest cabins, all with en-suite bathroom, are found on the lower deck. Mirroring their environment each cabin has been styled with a superbly executed aquatic life theme.

MAIN DECK SALON With the Mediterranean Sea and coastlines as his muse, EnzoEnea has created an interior design that brings the landscape inside in an inspiring fusion of nature and design.

MAIN DECK DINING The formal dining area opens on either side onto folding balconies, allowing guests to enjoy ultimate service without missing the spectacular views.

BRIDGE DECK SALON Two French balconies compliment the open plan arrangement of the bridge-deck salon, harmonizing the plush lounge area, Steinway & Sons baby grand and office area with their natural surroundings.

BEACH CLUB Intricate sealife motif mosaic work and interior level finishing ensure that this beach club breathes fun and excitement. Complete with hammam, walk-in shower and easy storage for the sea-bob collection and water sports equipment inside, guests then step outside on to the swim platform, which is customized to fold out off the main aft platform and extend either down into the sea or up to the quay depending which way you are headed.

BRIDGE DECK AFT A vintage feel is lent to a comfortable and sheltered bridge-deck by a set of restored signal lights. The dining table resonates with the warm wood table in the bridge deck salon, and the coffee tables by the large sofa aft.

SUNDECK The immense sundeck is perfectly laid out providing lounging and social areas conceived for day and night. Plush circular seats aft lead to a long low table and seating area and bar. Between the bar and forward Jacuzzi and sun-lounging area, a carbon fibre sliding door can be closed against the breeze or to create two separate vibes. The forward sundeck features sun beds and at its prow a curved cushioned swivel seat with a view down over the sunbathing area on the bridge deck and the bow. The Jacuzzi and bar can be set up for all moods with customized lighting and sound systems.

ENTERTAINMENT & TOYS Waverunners, tenders, sea-bobs, inflatable pool, supersize slide. There is water action abound, or for a more relaxing water sports experience the fishing chair or diving equipment make the perfect Companions.

Основная информация

Тип судна: Мега-яхта

Модельный год: 2013

Год постройки: 2013

Страна: Italy

Открытая палуба мостика: Да

Вертолетная площадка: Да

Размеры

Длина общая: 180' 6" (55.00m)

Ширина: 30' 11" (9.40m)

Мин. осадка: 11' 0" (3.35m)

Макс. осадка: 16' 1" (4.90m)

Скорость, вместимость и масса

Крейс. скорость: 13 Kts. (15 MPH)

Дальность на крейсерской скорости:
4500

Макс. скорость: 15 Kts. (17 MPH)

Макс. скорость поворота: 2100 Kts.

Чистый вес: 670 Pounds

Вместимость воды: 4490.924884 Gallons

Объем топливного бака: 30379.78598
Gallons

Размещение

Всего кают: 5

Спальные места: 14

Каюта капитана: Да

Каюты экипажа: 8

Спальных мест экипажа: 15

Корпус и палуба

Материал корпуса: Steel

Материал палубы: Teak

Дизайнер корпуса: Tim Heywood

Дизайнер экстерьера: Tim Heywood

Дизайнер интерьера: Enzo Enea / Focus
Yacht Design

Информация о двигателе

Двигатели: 2

Производитель: MTU

Модель: 2000 M70 16 V

Тип двигателя: Inboard

Тип топлива: Diesel

ФОТОГРАФИИ

Engelberg exterior



Engelberg exterior



Engelberg exterior



Engelberg exterior



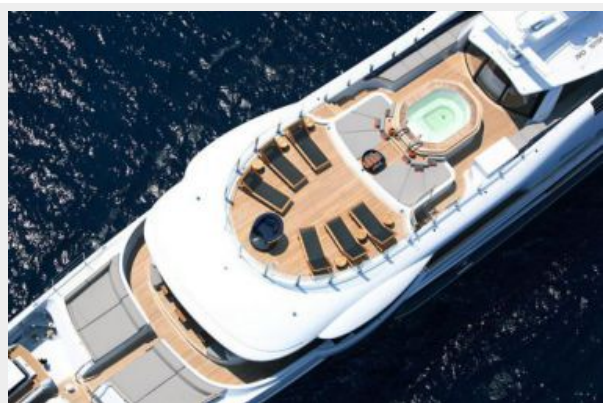
Engelberg exterior



Engelberg exterior



Engelberg exterior



Engelberg exterior



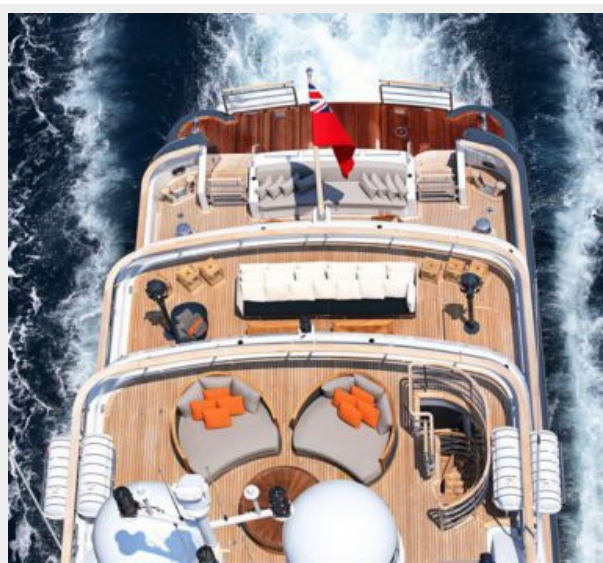
Engelberg exterior



Engelberg exterior



Engelberg exterior



Engelberg exterior



Engelberg exterior



Engelberg exterior



Engelberg Interior



Engelberg Interior



Engelberg Interior



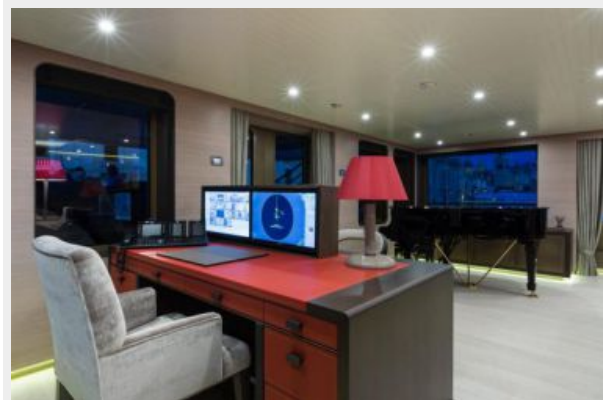
Engelberg Interior



Engelberg Interior



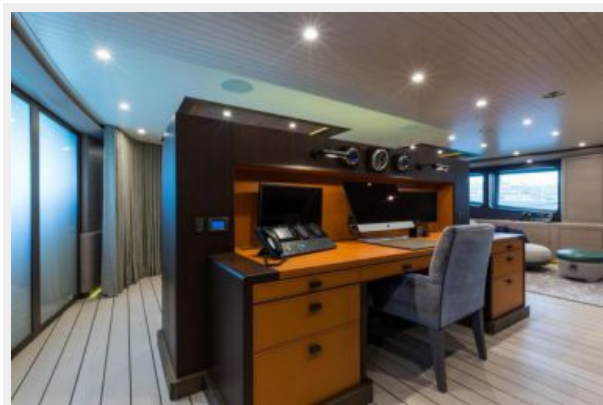
Engelberg Interior



Engelberg Interior



Engelberg Interior



Engelberg Interior



Engelberg Interior



Engelberg Interior



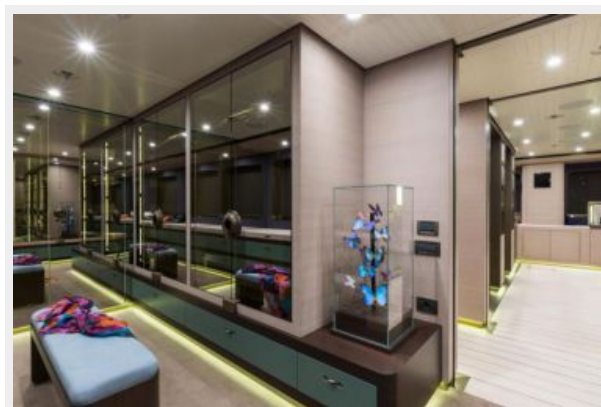
Engelberg Interior



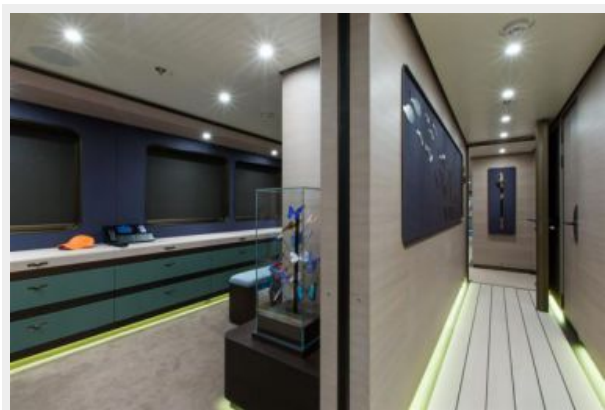
Engelberg Interior



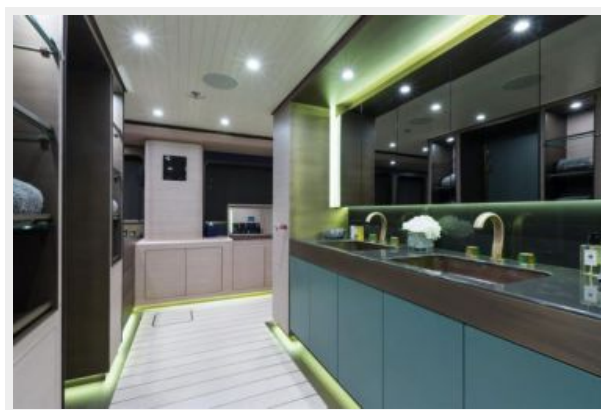
Engelberg Interior



Engelberg Interior



Engelberg Interior



Engelberg Interior



Engelberg Interior



Engelberg Interior



Engelberg Interior



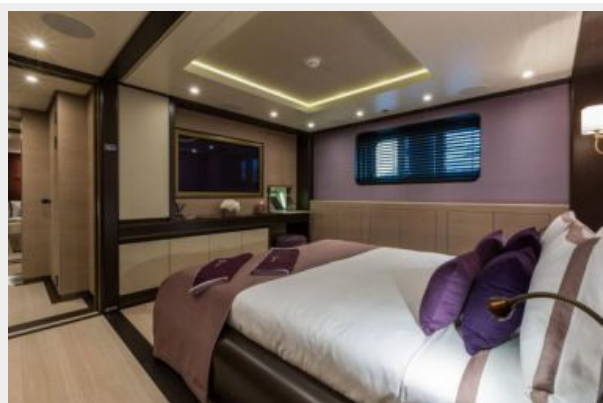
Engelberg Interior



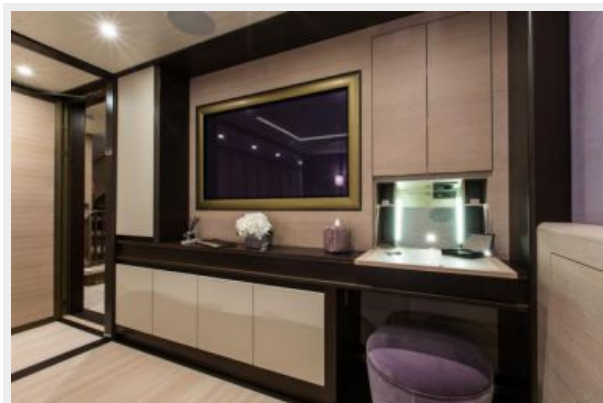
Engelberg Interior



Engelberg Interior



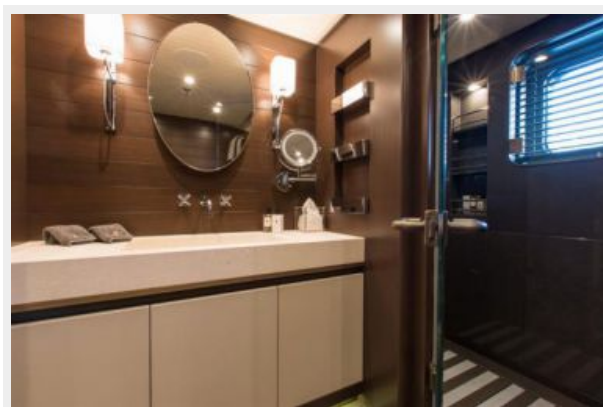
Engelberg Interior



Engelberg Interior



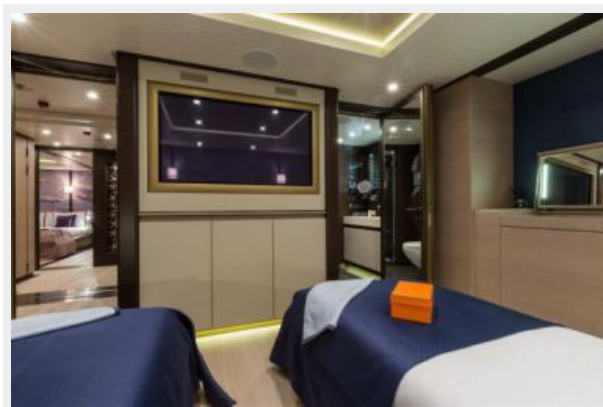
Engelberg Interior



Engelberg Interior



Engelberg Interior



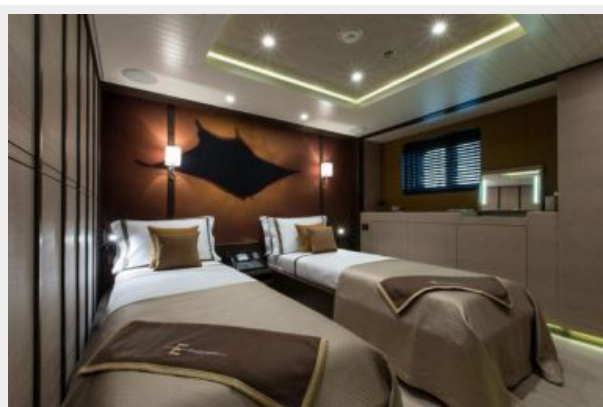
Engelberg Interior



Engelberg Interior



Engelberg Interior



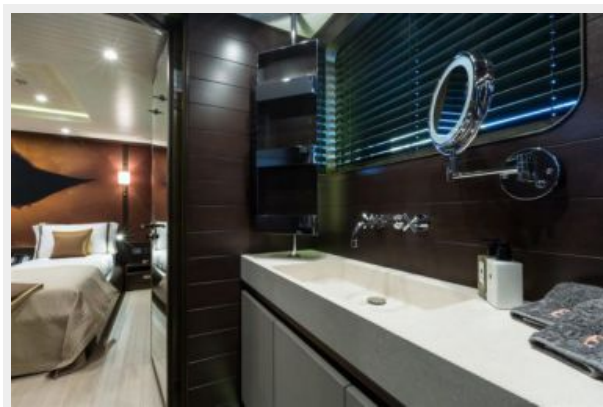
Engelberg Interior



Engelberg Interior



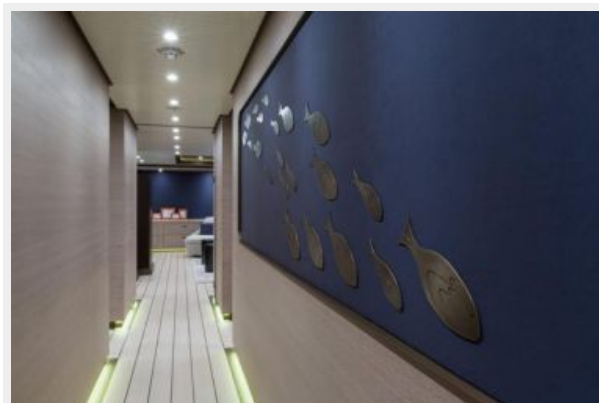
Engelberg Interior



Engelberg Interior



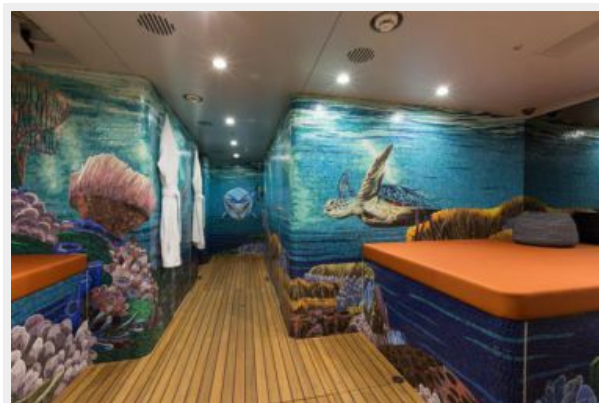
Engelberg Interior



Engelberg



Engelberg



Engelberg Sun Deck



Engelberg Main Deck



Engelberg Main Deck



Engelberg Main Deck



Engelberg Sun Deck



Engelberg Sun Deck



Engelberg Jacuzzi



Engelberg Jacuzzi



Engelberg Jacuzzi



Engelberg Galley



Engelberg Wheelhouse



Engelberg Engine Room



Engelberg Engine Room



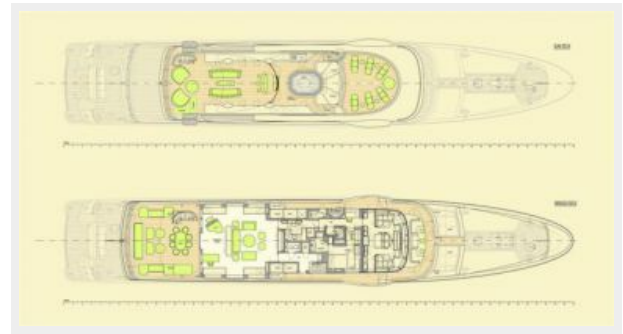
Engelberg exterior



Engelberg GA PLAN



Engelberg GA PLAN



КОНТАКТЫ

Андрей Шестаков (Andrey Shestakov) – ведущий яхтенный брокер отдела продаж яхт и судов компании Shestakov Yacht Sales Inc. Официальный представитель Shestakov Yacht Sales Inc. для русскоговорящих клиентов в центральном офисе компании в Майами/Форт Лодердейл/Флорида/США.

Контактная информация

Email: andrey@shestakovyachtsales.com

Web: shestakovyachtsales.com

Телефоны

Краснодарский край: **+7(918)465-66-44**

США, Майами, Флорида: **+1(954)274-4435**

Время работы

Понедельник – Суббота: **9:00 - 21:00**
EDT

Воскресенье: **Закрито**

Адрес



Harbour Towne Marina, 850 NE 3rd St,
STE 213, Dania, FL 33004