

## OVER THE EDGE — VIKING



**Судостроитель:** VIKING

**Год постройки:** 2001

**Модель:** Катер для спортивной рыбалки

**Цена:** **ЦЕНА ЯХТЫ ПО ЗАПРОСУ**

**Местонахождение:** United States

**Длина общая:** 61' 0" (18.59m)

**Ширина:** 18' 6" (5.64m)

**Крейс. скорость:** 28 Kts. (32 MPH)

**Макс. скорость:** 34 Kts. (39 MPH)

Купить **Over the Edge — VIKING** а также выбрать подходящую вам яхту из нашего каталога яхт вам поможет опытный яхтенный брокер Андрей Шестаков. На сегодняшний день компания **Shestakov Yacht Sales Inc.** имеет большое количество яхт в **собственном списке продаж**, а также тесно сотрудничает со всеми крупными яхтенными производителями по всему миру.

Для того чтобы купить яхту **Over the Edge — VIKING** а также проконсультироваться по любому вопросу связанному с покупкой, продажей, чартером яхт позвоните по телефону **+7(918)465-66-44**.

# ОГЛАВЛЕНИЕ

ОГЛАВЛЕНИЕ	2
ХАРАКТЕРИСТИКИ	4
Основная информация	4
Размеры	4
Скорость, вместимость и масса	4
Размещение	4
Корпус и палуба	4
Информация о двигателе	4
ПОДРОБНОЕ ОПИСАНИЕ	5
2001 61 Viking	5
Исключения	15
Отказ от ответственности	15
ФОТОГРАФИИ	16
Bow	16
Salon	16
Salon	16
Dinette	16
Galley	16
Master Stateroom	16
Master Head	17
Master Stateroom	17
Guest Stateroom	17
Guest Stateroom	17
Guest Head	18
Cockpit	18
Cockpit	18
Controls	18
Bow	18

---

Bow	18
Enclosed Bridge	19
Enclosed Bridge	19
Enclosed Bridge	19
Engine Room	19
Engine Room	19
Engine Room	19
Engine Room	20
Engine Room	20
Engine Room	20
Tender	20
Stern	20
КОНТАКТЫ	21
Контактная информация	21
Телефоны	21
Время работы	21
Адрес	21

# ХАРАКТЕРИСТИКИ

## Основная информация

**Тип судна:** Катер для спортивной рыбалки

**Модельный год:** 2001

**Год постройки:** 2001

**Страна:** United States

## Размеры

**Длина общая:** 61' 0" (18.59m)

**Ширина:** 18' 6" (5.64m)

## Скорость, вместимость и масса

**Крейс. скорость:** 28 Kts. (32 MPH)

**Макс. скорость:** 34 Kts. (39 MPH)

**Вместимость воды:** 400 Gallons

**Объем топливного бака:** 1850 Gallons

## Размещение

**Всего кают:** 3

## Корпус и палуба

**Материал корпуса:** Fiberglass

## Информация о двигателе

**Двигатели:** 2

**Производитель:** Caterpillar

**Модель:** 3412

**Тип двигателя:** Inboard

**Тип топлива:** Diesel

---

# ПОДРОБНОЕ ОПИСАНИЕ

---

## 2001 61 Viking

---

This 2001 enclosed bridge Viking is in great condition. She has been painted (2011) and kept in top shape from the engine room up; three stateroom layout; CAT engines; and dinghy davit.

### Salon

Amtico Teak and Holly at entry

Custom flat screen TV in Teak cabinet

Teak Cocktail table

Air conditioning with reverse cycle heat that circulates from concealed registers behind the valances to maximize comfort while minimizing noise and drafts w/individual temperature control

Carpeting, wall-to-wall w/padding and carpet cover

Fixed, frameless side windows w/tinted, tempered glass

Sony DVD/CD player, FM stereo w/surround sound and powered subwoofer Marantz

Kenmore icemaker in Teak cabinetry behind door

Silhouette blinds on all salon windows

Teak cabinetry w/drawers and bottle storage

Carpet Runner

U-Shaped sofa with storage, table in corner

Teak lambrequins

Overhead halogen lights recessed in headliner

Main electrical service panel, AC/DC, backlit and raised to eye level for easier viewing

Interior staircase to bridge

## Galley

Amtico Teak and Holly Flooring

Custom galley countertops

Refrigerator and freezer, Sub-zero, large capacity, deep-drawer under-counter style, (2) refrigerator unit and 1 freezer unit

Electrical sub-panel for galley appliances w/system monitor and alarm

Kenyon electric 3-burner range

Sharp microwave/convection oven located in upper galley cabinet above sink

Kenmore trash compactor

Garbage disposal in sink

Storage cabinets in upper galley teak doors w/deep, pullout drawers

Teak storage cabinets and drawers in lower galley, for stowage of stove lids, utensils, and other items

Water tank level gauge and pump indicator located in galley sub-panel

Teak backsplash

Dimmers on Galley Lights

Teak Ring on Teak Dinette Pedestal

Custom ultra-leather Dinette couch w/removable cushions and storage room underneath

Dinette table: Teak, high-gloss finish w/single pedestal, thru-bolted

Exhaust fan, high velocity

Stainless steel under mount sink w/brushed nickel faucet

## Master Stateroom

King-size, walk-around bed w/gas piston lift up top

Drawer storage under bed, (2) large drawers

Teak end tables at forward and aft ends of bed, with drawer and door storage

2-Cedar lined hanging closets with doors built into wall

Teak storage locker cabinet w/large drawers below

Overhead halogen lights and decorative rope lighting from underneath bed platform

Overhead reading lights w/seperate switches

JVC stereo

Vidao TV mounted into wall

Sony DVD player

Four drawers under TV with four cabinets Port

Telephone outlet

Air conditioning w/reverse cycle heat w/temperature control

Bomar hatch

## **Master Head**

Amtico Teak and Holly Flooring

Vacuflush head

Air conditioning/heat w/vent in soffit

Exhaust fan w/vent in soffit

Linen storage

Lower vanity w Teak face

Overhead halogen lights

Medicine cabinet w/mirrored doors

One-piece custom frameless shower door

Countertops w/chrome dual lever faucets

Receptacle, 120V

Shower light

Towel bar

### **VIP Stateroom - forward**

Cross-over beds with over sized lower bunk with (4)storage drawers under bed

Hanging locker

Overhead halogen lights

Wallpaper

Air conditioning w/reverse cycle heat w/temperature control

Stereo speakers recessed in headliner tied into salon stereo w/volume control

JVC TV mounted in Teak panel

Teak storage cabinets, under starboard bunk

Teak shelf with Formica

Bomar Hatch

### **VIP Head**

Air conditioning/heat w/vent in soffit

Full size Vacuflush head

Exhaust fan w/vent

Overhead halogen lights

Medicine cabinet w/mirrored doors

Receptacle, 120V

Shower light



Fiberglass stall shower w/chrome shower fixtures w/drain to automatic sump pump in bilge

Towel bar

Amtico Teak and Holly Flooring

Counter tops

### **Guest Stateroom - Starboard**

Upper and Lower berths

Hanging locker

2 Storage drawers located under hanging locker

Overhead halogen lights

Carpeting

Air conditioning w/reverse cycle heat w/temperature control

Bomar hatch

Washer and dryer in closed

### **Guest Head**

Amtico Teak and Holly flooring

Air conditioning/heat w/vent in soffit

Full size head Vacu Flush

Exhaust fan w/vent in soffit

Overhead halogen lights

Medicine cabinet w/mirrored doors

120V Receptacle

Shower light

Fiberglass stall shower w/ drains to automatic sump pump in bilge

Towel bar

## **Enclosed Flybridge**

Updated upholstery on all seating

Fire system control w/automatic /manual discharge/override system located at console

Fuel gage located in cabinet at console

Electronic engine displays CATs

Lighted switches over console

Flush mounted lighted compass on centerline

Stidd helm chair

Port and stbd jump seat, storage underneath

L-shaped lounge seating

Bridge A/C

Moritz safety monitoring system w/ audible/visible alarms

Samsung TV

Non-slip deck for traction and durability on rear of flybridge

Power assist steering

Rear rail powder coated, 7 rod holders

Underwater lights (3)

U-line refrigerator

Powder coated safety rail at hatch to flybridge

Trumpet style air horns (2). Powder coated white under bridge

Under helm access w/ lights and storage room

Rear station control with bow thruster control

B&G HS 2000 display

Rear Halogen lighting

## **Navigation Station**

2 Garmin 3010L GPS/plotter

SAT system phone

Clarion CD player/FM stereo w/ speakers

B&G digital depth/speed display

SAT TV Dome M7

Furuno radar w/6" array

Furuno FCV-292 bottom machine

Simrad AP22 autopilot

ICOM VHF's M604 (2)

Northstar 951X GPS/plotter

KVH Tracvision SAT TV

## **Cockpit**

Swim platform

2 Fighting chairs, custom

Fresh water washdown

Live well in sole

Ice chipper to fish box

Transom fish box

Sink

Large freezer

Rod holders

Stairs to bridge

Refrigerated drink box in front of door

Tackle storage

Transom door and gate

## **Deck Equipment**

Davit and dingy, 50 Yamaha, 14' Nautica

Fiberglass freshwater tank, reinforced

Fiberglass holding tank w/dockside and overboard pump out

Laminated end-grain balsa core in hull sides and topsides

Molded fiberglass salon floor/engine room ceiling w/Divinycell core for acoustical & thermal insulation

Recessed Trim Tab Covers

Electronic Trolling Valves

## **Electrical System**

24-volt DC ship's service throughout

24/12-volt power supply w/breakers on flybridge

110V outlet in engine room on aft bulkhead

Anchor light/navigation lights

Batteries, 24 volt banks mounted in fiberglass storage boxes

Battery chargers, (2) w/thermal cutoff & switching system for complete integration

Battery distribution panel w/battery cutoff & charging system breakers

Battery parallel system for main engines & generator start

Bonded electrical system w/ground plate

Color-coded, labeled & numbered wiring system w/corresponding drawings

Twin Diesel - Onan 21.5 kW E-QD (electronic quiet diesel) series, user-friendly w/electronic governing allowing voltage & electronic frequency control

Engine room lights, AC & DC w/switch at engine room entrance

Glendinning cablemaster, (2) with 3 wire grounded cord

Instrument panel lights for flybridge & main electric panel

Master electrical control panel located in salon with 24V/120V circuit breakers, individual switching for shore 1, shore 2, or generator supply and gauges for electrical supply, voltmeter, amp meter, and frequency

Receptacles, 120 volt duplex w/GFI throughout

Sub-panel located in galley for galley appliances, galley lights, gauge for water tank and alarm panel for safety monitoring system

Voltage stabilizer isolation transformers for more consistent, cleaner voltage

## **Engine Room**

Twin CATs - Hours: Port 3428, Starboard 3513

Air conditioning - zoned w/reverse cycle heat for complete climate control throughout the interior w/individual temperature controls for staterooms and salon

A/C pressurized fresh water system w/on deck fresh water fill and cockpit dockside supply inlet w/pressure reducing valve

Dometik ice chipper

Bilge pumps

Engine room ventilation system w/supply and discharge fans for proper fresh air supply and water intrusion suppression

Engine room entrance gauge package consisting of gauges for digital tachometer, engine water

temperature, engine oil pressure, and engine room mounted engine start/stop switches for easier viewing and accessibility

External sea strainers for main engine pick-ups

Fire suppression system, automatically or manually operated - tied into main engine and generator ignition systems w/override

Fresh water supply in engine room for general maintenance and cleaning

Fuel and oil lines, flexible, steel reinforced USCG approved, aircraft type

Fuel priming pumps for main engines, electric

Fuel transfer system, 24V DC pump

Fuel/water separator filters for main engines and generator, "dual" filters for main engines. Glass bowl type, top-loading for convenient replacing

110 X Outlet on Aft Engine Room Bulkhead at Entranceway

Sea Strainers

Sea strainers for generator, air conditioning and all other sea water pickups

Air compressor

Oil changing system, gear type pump for main engines, transmissions, and generator

Power assist hydraulic steering w/steering junction block under helm for future stations/autopilot

Rudders, stainless steel w/dripless thru-water and Tides Marine UHMW bearing for ease of maintenance

Seacocks, bronze, boll-type sea valves and strainers for all thru-hulls below the water line

2 Aquamet high-strength stainless steel, double-taper w/machined keyway

Structural steel engine beds mounted to transverse intermediate bulkheads to isolate torque and vibration/engine noise and ensure drive-train alignment

Trim tabs, dual piston w/center tabs recessed in transom, individual controls

Raritan water heater

Village Marine water maker

Awl grip Forward Bilge

Dual power steering pump IPO standard single on Port engine and Starboard

Tool box forward pump room

Forward Bulkhead w/ pump room forward

## **Exclusions**

Artwork and personal items

## **Исключения**

---

При продаже яхты исключаются личные вещи владельца.

## **Отказ от ответственности**

---

Компания предоставляет описание судна или яхты добросовестно, но не может гарантировать точность этой информации, а также не ручается за техническое состояние. Покупатель должен проинструктировать своих агентов или оценщиков исследовать представленную информацию более подробно, по собственному желанию. Продажа судна или яхты, изменение цены или снятие с продажи будет происходить без предварительного уведомления.

# ФОТОГРАФИИ

**Bow**



**Salon**



**Salon**



**Dinette**



**Galley**



**Master Stateroom**





**Master Stateroom**



**Master Head**



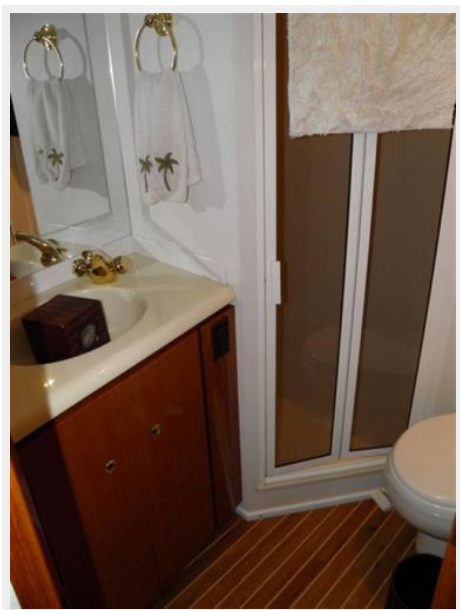
**Guest Stateroom**



**Guest Stateroom**



**Guest Head**



**Cockpit**



**Cockpit**



**Controls**



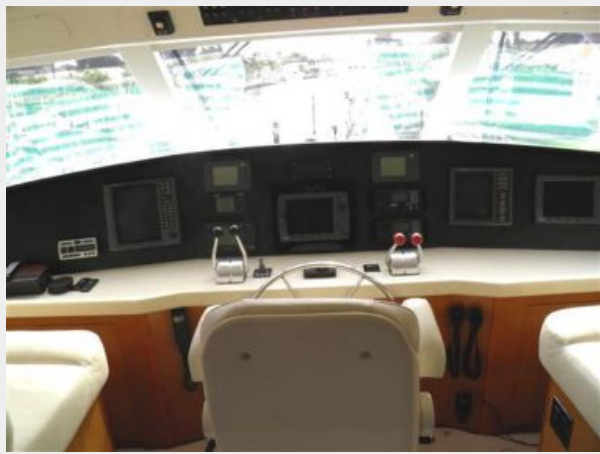
**Bow**



**Bow**



**Enclosed Bridge**



**Enclosed Bridge**



**Enclosed Bridge**



**Engine Room**



**Engine Room**



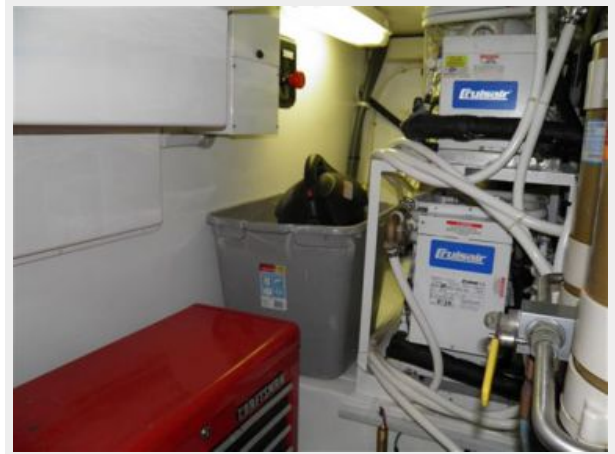
**Engine Room**



**Engine Room**



**Engine Room**



**Engine Room**



**Tender**



**Stern**



# КОНТАКТЫ

---

Андрей Шестаков (Andrey Shestakov) – ведущий яхтенный брокер отдела продаж яхт и судов компании Shestakov Yacht Sales Inc. Официальный представитель Shestakov Yacht Sales Inc. для русскоговорящих клиентов в центральном офисе компании в Майами/Форт Лодердейл/Флорида/США.

## Контактная информация

---

Email: [andrey@shestakovyachtsales.com](mailto:andrey@shestakovyachtsales.com)

Web: [shestakovyachtsales.com](http://shestakovyachtsales.com)

## Телефоны

---

Краснодарский край: **+7(918)465-66-44**

США, Майами, Флорида: **+1(954)274-4435**

## Время работы

---

Понедельник – Суббота: **9:00 - 21:00**  
EDT

Воскресенье: **Закрето**

## Адрес

---



Harbour Towne Marina, 850 NE 3rd St,  
STE 213, Dania, FL 33004