

CAROL KAY — CARVER



Судостроитель: CARVER

Год постройки: 2001

Модель: Крейсер

Цена: ЦЕНА ЯХТЫ ПО ЗАПРОСУ

Местонахождение: United States

Длина общая: 45' 0" (13.72m)

Ширина: 14' 11" (4.55m)

Макс. осадка: 3' 7" (1.09m)

Купить **CAROL KAY — CARVER** а также выбрать подходящую вам яхту из нашего каталога яхт вам поможет опытный яхтенный брокер Андрей Шестаков. На сегодняшний день компания **Shestakov Yacht Sales Inc.** имеет большое количество яхт в собственном списке продаж, а также тесно сотрудничает со всеми крупными яхтенными производителями по всему миру.

Для того чтобы купить яхту **CAROL KAY — CARVER** а также проконсультироваться по любому вопросу связанному с покупкой, продажей, чартером яхт позвоните по телефону **+7(918)465-66-44**.

ОГЛАВЛЕНИЕ

ОГЛАВЛЕНИЕ	2
ХАРАКТЕРИСТИКИ	5
Обзор	5
Основная информация	5
Размеры	5
Скорость, вместимость и масса	5
Размещение	6
Корпус и палуба	6
Информация о двигателе	6
ПОДРОБНОЕ ОПИСАНИЕ	7
Vessel Walkthrough & Accommodations	7
Galley	7
Master Stateroom	8
Guest Stateroom	8
Lower Helm/Pilothouse Area	9
Flybridge	10
Mechanical	11
Engine Room	11
Electrical	11
Swim/Boarding Platform	12
Aft Cockpit	12
Forward and Side Decks	13
Water and Holding Tank System	13
Broker Remarks	13
Исключения	13
Отказ от ответственности	14
ФОТОГРАФИИ	15
Flybridge Forward	15

Adjustable Helm Seating	15
Helm	15
Flybridge Electronics	15
Flybridge Guest Seating	15
Wet Bar	15
Access to Flybridge from Cockpit	16
Flybridge Aft Deck	16
Stern View Swim Platform	16
Salon Forward	16
Salon to Starboard	16
Salon to Port	16
Lower Helm to Starboard	17
Lower Helm Guest Seating	17
Galley Forward	17
Guest Stateroom	17
Guest Head	17
Master Stateroom	17
Ensuite Master Head with Separate Shower	18
Master Stateroom to Port	18
Nice Galley Up with a Great View	18
Salon View from Galley	18
TV Slides into Cabinet	18
Salon Aft	18
Molded Steps to Flybridge	19
Cockpit to Port	19
Starboard Stern View	19
Engine Room	19
Bow View Aft	20
Volvo TAMD74EDC	20

Ground Tackle	20
Maxwell 2200 Windlass	20
Starboard Bow View	20
Anchoring!	20
КОНТАКТЫ	21
Контактная информация	21
Телефоны	21
Время работы	21
Адрес	21

ХАРАКТЕРИСТИКИ

Обзор

The popular 450 Voyager is a downsized version of the 530 Voyager with the upgraded Volvo 74P engines. Because the Galley is located in the isle way opposite the elevated lower helm, the Salon is huge! There are two Staterooms and two full Heads below, and visibility from the lower helm - with its curved ultra-leather lounge - is superb. On deck, a fly-bridge extension partially shelters the cockpit where the engine room is accessed via the lazarette. Additional features include cherry interior cabinetry, a very convenient starboard deck access door at the lower helm, a big swim platform, and a well-arranged flybridge. CAROL KAY is a excellent performer, very clean and ready to sell...make an offer!

Easy to see in Stuart, Florida just 45 minutes north of West Palm Beach Airport.

Основная информация

Тип судна: Крейсер	Модельный год: 2001
Год постройки: 2001	Страна: United States
Верх: Bimini Top	Открытая палуба мостика: Да
Кубрик: Да	

Размеры

Длина общая: 45' 0" (13.72m)	Ширина: 14' 11" (4.55m)
Макс. осадка: 3' 7" (1.09m)	Трапы: 19' 11" (6.07m)

Скорость, вместимость и масса

Водоизмещение: 39600 Pounds	Вместимость воды: 150 Gallons
Вместимость сточного бака: 80 Gallons	Объем топливного бака: 560 Gallons

Размещение

Всего кают: 2

Корпус и палуба

Материал корпуса: Fiberglass

Отделка корпуса: Polyethylene

Информация о двигателе

Двигатели: 2

Производитель: Volvo

Модель: TAMD74P

Тип двигателя: Inboard

Тип топлива: Diesel

ПОДРОБНОЕ ОПИСАНИЕ

Vessel Walkthrough & Accommodations

ACCOMMODATIONS OVERVIEW: The Master Stateroom is located amidships under the lower helm station with a private ensuite head with shower. The Guest Stateroom is located forward with a centerline queen berth and a shared Head. The Salon has a convertible sleeper sofa for a total of six berths.

WALKTHROUGH: Enter into the vessel from the Cockpit through a large curved sliding glass door into the Main Salon. In the Main Salon on the Port side is an "L" Shaped Leather Settee with recliners built in. Across on the Starboard Side is a matching convertible loveseat. In the Aft Starboard Corner built-in is a TV & Entertainment unit. In the front part of the Salon is a Wet Bar with bottle and glasses storage and sink.

Two steps up and forward on the Starboard side is the Lower Helm with large wrap around seating and a very comfortable fully adjustable captains chair and a sliding door out to the starboard deck.

Forward from the Salon area on the Port side is the fully equipped Galley with Corian counter tops and plenty of storage cabinets & drawers. Forward and down three steps on the portside is the Guest Head (wet head) with VacuFlush toilet, sink & cabinet.

Across on the Starboard side is the Master Stateroom, Queen Island berth with ensuite private head with separate shower. Forward in the bow is the Guest Stateroom with Queen Island berth that lifts up with storage compartments. Also a built in TV/VCR (VCR reported not working), and a closet.

Galley

The Galley on the 450 Voyager is uniquely placed along the portside passageway opposite the elevated lower helm just off the Salon. Galley amenities include:

- Corian countertops
- (1) 110V duplex electrical outlet
- Hardware highlights- brass/chrome
- (4) Overhead halogen recessed lights
- Black & Decker®, Microwave oven/ convection
- Filtered fresh water spigot
- Princess electric 2-burner stove, smooth top
- Range vent
- Norcold Refrigerator/ Freezer 9.1 cubic foot, upright
- Rocker light switches
- Corian single basin sink with removable sprayer spout, hot/cold fresh water
- (6) Storage cabinets
- (4) Storage drawers
- Laminate wood floor

Master Stateroom

Down three steps from the Galley and to the starboard is the large Master Stateroom with angled queen bed. A very large stateroom for a vessel of its size. There is a private ensuite head with separate shower.

- Mid-Ship Queen Berth with private ensuite head and shower
- 77" x 60" berth with 15 cubic ft. storage under hinged lift up bed
- Pillow top foam mattress
- Designer comforter and pillows
- Carpet - high quality low pile, black and gold design with cushioned backing
- (2) Cherry with Corian top night tables with storage
- Lots of Storage, drawers, and hanging lockers
- Access to very large auxiliary storage under Galley
- Overhead Italian lighting
- (2) Stereo speakers
- (2) Opening portlights for natural light
- Wood slat mini blinds
- (2) 110V duplex electrical outlets
- Sliding pocket entrance door
- 6' 7" standing head room

MASTER ENSUITE HEAD AND SHOWER

- VacuFlush full size toilet
- Cherry vanity with cabinet storage and Corian sink and counter top
- Hot/cold faucet - chrome with gold trim
- Towel and wash cloth racks
- 6'5" head room
- Separate enclosed shower with molded in seat
- Opening porthole in shower
- Mirrored opening medicine cabinet
- Carpeted floor
- Frosted glass entrance door from Master Stateroom

Guest Stateroom

The forward Guest Stateroom has a centerline queen size berth and a private entry to the Guest Day Head with wet head shower.

- Queen Island Berth with pillow top foam mattress
- Designer comforter, pillows and six curtains
- Berth step-ups (2) carpeted
- Mirrored headboard
- Curtains décor-matched

- Carpet - high quality low pile, black and gold design with cushioned backing
- Corian Countertop on both sides of berth
- (2) 110V duplex electrical outlets
- (10) 12V overhead lights
- Hanging locker cedar lined, carpeted, with automatic light
- Hardware highlights-chrome
- (2) Opening portlights with screens
- Overhead hatch - translucent, lockable, inside screen
- Rocker light switch
- Storage beneath mattress
- Telephone connector
- A/C controls
- Ensuite access to Guest/Day Head
- 6'5" standing head room

GUEST/DAY HEAD

- Vacuflush full size toilet
- Corian sink and counter top
- Molded fiberglass vanity with storage cabinet
- Sliding mirrored medicine cabinet doors
- Towel holder
- Guest/Day Head also accessible from passageway

Lower Helm/Pilothouse Area

The Lower Helm/Pilothouse area is accessible from the Salon up three stairs on the starboard side. It is air conditioned and fully equipped with electronics and navigation equipment.

- Voyager Camera B/W display - (2) cameras in engine room and cockpit aft facing
- Access panel - provides access to wiring below helm
- Upper accessory space for installing navigation equipment
- Adapter - 12V
- (2) beverage holders, self-draining
- Wrap-around high quality marine U-shaped seating for four
- Dash-molded fiberglass
- Displays (1 for each engine) digital LCD tachometer; engine instrumentation and diagnostics
- Gauges - analog; fuel level for each tank and rudder angle indicator
- Electronic throttles/shifters
- Helm seat - swivel pedestal, fully adjustable,
- Furuno NavNet 2 Radar/GPS/Chartplotter
- Raytheon ST60 Depth
- Icom M504 VHF
- Robertson AP22 Autopilot
- Sharp 14" Color Monitor (slave remote controls of TV)
- Bennett Trim Tabs
- Remote Windlass Controls
- Docking Lights
- Remote Hailer Speaker
- Jabsco Spotlight Remote
- QL Bow Thruster Controls
- Ritchie Power Damp Compass
- Engine Synchronizer
- Separate A/C serving lower helm

- arm rests
- Light - courtesy, recessed
- Rocker switch controls
- Telephone connector
- Tilt steering with padded sports car stylewheel
- Windshield-wraparound, aluminum frame
- (3) Pantograph Windshield Wipers
- Carpet - high quality low pile, black and gold design with cushioned backing
- Sliding stbd side deck access door
- 6'8" head room
- Overhead white/red light
- (4) 12V overhead LED lights

Flybridge

Access to the large flybridge is up very user-friendly safe stairs from the aft cockpit.

- 48.5 square foot approx. aft bridge extension
- (1) 110V duplex electrical outlet
- Electronics arch welded premium grade aluminum painted with AWLCRAFT® 2000 acrylic urethane topcoat for use in harsh marine environments
- Electronics arch access plates (5)-corrosion-resistant polymer attached with non-corroding screws & waterproof sealant
- Hand rail - stainless steel aft of flybridge
- (3) Recessed courtesy lights
- (2) Recessed halogen lights
- Lounge - double-wide, starboard side, with storage beneath; U-shaped, port side
- Sunbrella bimini top with four sided Eisenglass enclosure and five opening panels (Eisenglass is three years old and in excellent condition)
- Bridge carpet, fully bound
- Custom table & factory table
- Wet bar with ice maker (New 2013)
- AM/FM/CD player West Marine Blue Tooth, (6) 600W speakers
- Trim tab controls
- Volvo Electronic Single Lever Shifter/Throttle/Controls
- Digital LCD tachometer (turbo boost, temps, etc.)
- Volvo LCD electronic read outs
- Adjustable steering
- (2) Adjustable helm seats
- Raytheon ST60 digital depth
- Furuno 6P-1650DF GPS Chart and bottom sounder
- Furuno NavNet Rada/GPS Chartplotter
- Icom M504 VHF
- Remote Hailer Speaker
- Jabsco Searchlight remote control
- QL Bow Thruster Controls
- Simrad AP22 Autopilot
- Windlass Remote Controls with Maxwell digital code counter (New 2014)
- Rudder Angle Indicator
- Ritchie Power Damp Compass
- (1) Center Pantograph windshield wiper

Mechanical

Volvo 74P 480 HP with 1700 hours. Fully maintained by Gary Woods, authorized Volvo specialist in Palm City. New exhaust elbows and risers on both engines in 2014. Full Trip and Maintenance Logs available, along with Oil Analysis history.

- Air conditioning MarineAir Systems®, 4-zone, 49,000 BTU with reverse cycle heat
- Cutlass bearings synthetic rubber composite
- Exhaust mufflers - engines, generator
- Hydraulic steering
- Internal seawater strainers
- Propellers - 4-blade, Certifiable Alloy Nibral, manufacturer certified
- New Bow Thruster (2014)
- Propeller shafts - 2.5" diameter, Aquamet®
- Rudders & struts 421 manganese bronze
- Single station engine synchronizer
- Tides Marine® SureSeal Shaft Seals - self-aligning Nitrile lip seal
- Trim tabs – 26" x 12" plane, stainless steel, hydraulic
- Fresh water cooling - engines
- Fuel tanks (2) - 277 gallons each, welded, baffled 5052 aluminum

Please Note: Engine hours shown here are as of the original listing date and are an account of what the Listing Broker was told by the Owner and/or actual reading of the engine hour meters. The Broker cannot guarantee the actual true hours. It is the responsibility of the Buyer and/or his Agent/Surveyor to verify engine hours, as well as, all other representations noted on the Listing Brochure.

Engine Room

- Fireboy FE-241 (needs recertification)
- Engine room camera
- Bilges coated with white, low-VOC gelcoat
- Bulkheads laminated to hull sides & stringers
- Catwalk-diamond plate aluminum
- Insulation-acoustical & thermal, vinyl vapor barrier
- (4) Overhead fluorescent lights, controls in cockpit
- SS access ladder

Electrical

- AC/DC distribution panels with magnetic circuit breakers & integral generator & bilge blower
- Onan generator - 13.5 kW, with sound shield, dedicated NorthStar AGM Battery(2014). 2371

- AC & DC voltmeters; AC ammeter
- (5) NorthStarNSB M12-210AGM (2014)
- (2) NorthStar NSB M12-130 AGM (2014)
- Battery chargers - (1) 30 amp charger for the engines and ship service batteries
- Link 1000Battery Charger/ Inverter 120A/2000W
- hours on genset.
- Ground Fault Circuit Interrupt (GFCI) protection-all electrical outlets
- Glendinning 50 amp power retractable cablemaster
- Wiring system - tinned copper strand wire, harnessed, color-coded, labeled, meets or exceeds ABYC standards
- Battery charger for dedicated bow thruster batteries

Swim/Boarding Platform

- 40 square feet approx., integral to hull & deck
- Boarding ladder - telescoping, with grab rail, concealed in boarding platform
- Hand rail - stainless steel, starboard transom
- (2) Storage lockers in-deck, self-draining
- (2) Storage lockers - transom, for stowing shore water hoses & shore power lines

Aft Cockpit

- 62 square feet approx., integral to hull & deck, self-draining
- Aft bridge extension stairway-integral, diamond pattern non-skid steps, with stainless steel hand rail
- Bolsters - padded, on port & starboard weatherboards
- (1) 110v duplex electrical outlet
- Grab rails (2) - stainless steel, by side deck stairways
- (2) Side deck stairways integral to deck
- Grab rail - stainless steel, on top of transom
- (4) Flush deck fish rod holders
- (2) White underwater lights facing aft.
- Hatch - engine room access, 3' x 4.5' guttered, water tight
- (5) Blue courtesy lightsrecessed with exterior mounted switch
- (4) Halogen lightsoverhead, recessed with exterior-mounted switch
- (2) Stereo speakers
- Storage locker recessed beneath aft bridge extension stairway
- Transom door - aluminum, secures closed, stainless steel hardware
- Aft facing camera

Forward and Side Decks

- New Maxwell 2200 chain/drum windlass with 300' chain, foot pedal on foredeck
- New Bruce anchor
- (2) Fender Holders (3 each side)
- Bow lockers (2) in-deck, self-draining, for fender storage & anchor chain locker access
- Bow rail - 1.25" O.D., lineal-buffed, welded stainless steel, with additional intermediate rail amidships & forward
- Bow rail stanchions double welded (inside & outside), stainless steel, anchored to aluminum backing plates laminated into deck
- Cleats - 12" stainless steel: anchor (1), bow (2), stern (2) inboard-mounted with stainless steel hawse pipes]; 10" stainless steel: spring (4) - bolted through aluminum backing plate
- SS grab rail over cabin windows, running length of cabin & above windshields
- Rub rail molding heavy duty 1 3/4 316L stainless steel inserts
- Cabin top sun pad
- Windshield weather covers-black mesh
- (3) Pantograph windshield wipers

Water and Holding Tank System

- Central grey water system
- Fresh water storage tanks (2) -75 gallons each, polyethylene
- Fresh water tank level monitor
- Grey water sump pump-automatic/manual operation
- Hot & cold transom handshower
- ITT Jabsco® Fresh Water System
- Shore water connection with pressure-reduction valve
- Washdown - fresh water, bow & transom
- (2) Waste holding tanks 40 gallons each with filtered vents & dockside pumpouts
- (2) Waste tank level monitors
- Water & waste lines-constructed of molecularly cross-linked polyethylene
- 11 gallon water heater

Broker Remarks

Trip and maintenance LOG available for review, but does not convey with vessel.

Исключения

При продаже яхты исключаются личные вещи владельца.

Отказ от ответственности

Компания предоставляет описание судна или яхты добросовестно, но не может гарантировать точность этой информации, а также не ручается за техническое состояние. Покупатель должен проинструктировать своих агентов или оценщиков исследовать представленную информацию более подробно, по собственному желанию. Продажа судна или яхты, изменение цены или снятие с продажи будет происходить без предварительного уведомления.

ФОТОГРАФИИ

Flybridge Forward



Adjustable Helm Seating



Helm



Flybridge Electronics



Flybridge Guest Seating



Wet Bar



Access to Flybridge from Cockpit



Flybridge Aft Deck



Stern View Swim Platform



Salon Forward



Salon to Starboard



Salon to Port



Lower Helm to Starboard



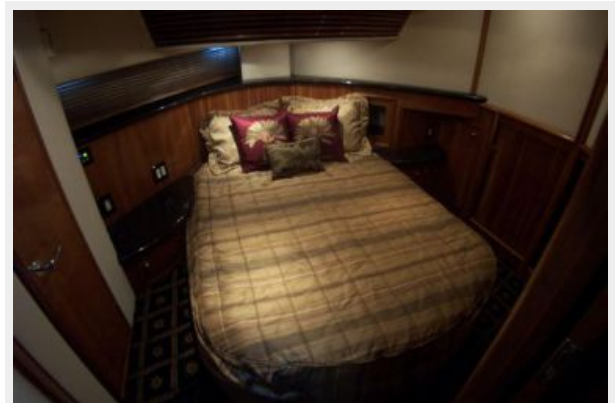
Lower Helm Guest Seating



Galley Forward



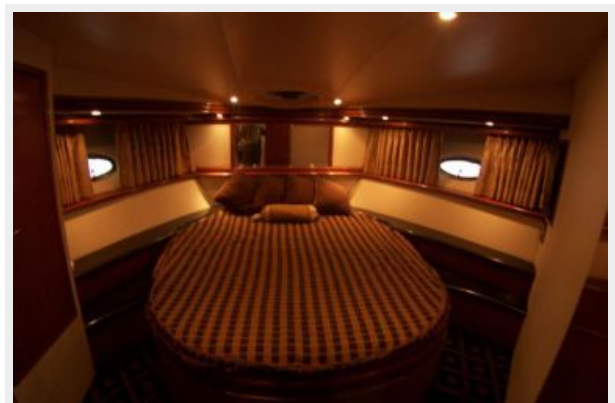
Guest Stateroom



Guest Head



Master Stateroom



Ensuite Master Head with Separate Shower

Master Stateroom to Port



Nice Galley Up with a Great View



Salon View from Galley



TV Slides into Cabinet



Salon Aft



Cockpit to Port



Molded Steps to Flybridge



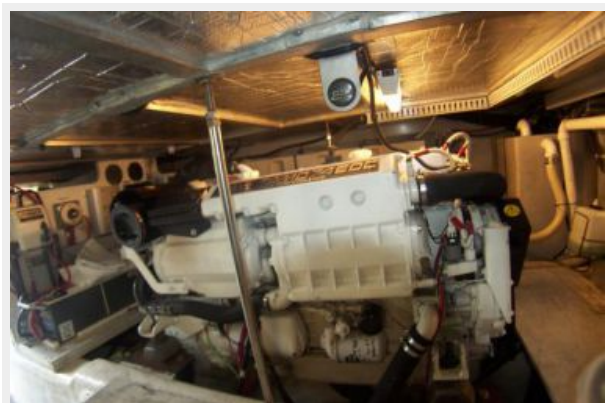
Starboard Stern View



Engine Room



Volvo TAMD74EDC



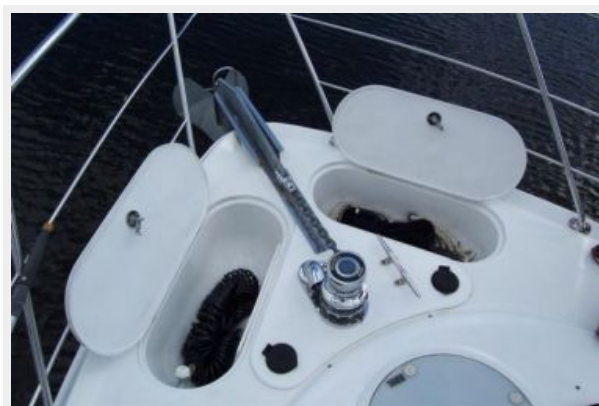
Bow View Aft



Ground Tackle



Maxwell 2200 Windlass



Starboard Bow View



Anchoring!



КОНТАКТЫ

Андрей Шестаков (Andrey Shestakov) – ведущий яхтенный брокер отдела продаж яхт и судов компании Shestakov Yacht Sales Inc. Официальный представитель Shestakov Yacht Sales Inc. для русскоговорящих клиентов в центральном офисе компании в Майами/Форт Лодердейл/Флорида/США.

Контактная информация

Email: andrey@shestakovyachtsales.com

Web: shestakovyachtsales.com

Телефоны

Краснодарский край: **+7(918)465-66-44**

США, Майами, Флорида: **+1(954)274-4435**

Время работы

Понедельник – Суббота: **9:00 - 21:00**
EDT

Воскресенье: **Закрето**

Адрес



Harbour Towne Marina, 850 NE 3rd St,
STE 213, Dania, FL 33004