

DE BAIT ABLE — CHEOY LEE



Builder: CHEOY LEE

Year Built: 1989

Model: Sport Fisherman

Price: PRICE ON APPLICATION

Location: United States

LOA: 50' 0" (15.24m)

Beam: 16' 1" (4.90m)

Max Draft: 3' 2" (0.97m)

Cruise Speed: 25 Kts. (29 MPH)

Max Speed: 35 Kts. (40 MPH)

Our experienced yacht broker, Andrey Shestakov, will help you choose and buy a yacht that best suits your needs **De Bait Able — CHEOY LEE** from our catalogue. Presently, at Shestakov Yacht Sales Inc., we have a wide variety of yachts available on our sale's list. We also work in close contact with all the big yacht manufacturers from all over the world.

If you would like to buy a yacht **De Bait Able — CHEOY LEE** or would like help answering any questions concerning purchasing, selling or chartering a yacht, please call **+1(954)274-4435**

TABLE OF CONTENTS

TABLE OF CONTENTS	2
SPECIFICATIONS	3
Overview	3
Basic Information	3
Dimensions	3
Speed, Capacities and Weight	3
Accommodations	4
Hull and Deck Information	4
Engine Information	4
PHOTOS	5
CONTACTS	19
Contact details	19
Telephones	19
Office hours	19
Address	19

SPECIFICATIONS

Overview

AMAZING opportunity to own an always captain maintained ONE OWNER 50 foot Sport Fish of exceptional quality. REPOWERED with BRAND NEW QSM 11's in 2007 !! This boat has everything you could possibly want for a day at sea or a trek to the Bahamas or further and you won't find another like her. Replacement model for Cheoy Lee 48 Sport Yacht (1980–86) features greater beam, a third stateroom, much improved styling. Teak- paneled interior boasts well-planned galley area, two large heads, comfortable (if Spartan) salon with fixed table. Large fishing cockpit came standard with tackle center, freezer. Airex cored hull results in a surprisingly weight-efficient boat. Flybridge is large for a 50-footer with seating for eight.

Basic Information

Category: Sport Fisherman

Sub Category: Convertible

Model Year: 1989

Year Built: 1989

Country: United States

Dimensions

LOA: 50' 0" (15.24m)

Beam: 16' 1" (4.90m)

Max Draft: 3' 2" (0.97m)

Speed, Capacities and Weight

Cruise Speed: 25 Kts. (29 MPH)

Max Speed: 35 Kts. (40 MPH)

Displacement: 36000 Pounds

Water Capacity: 200 Gallons

Fuel Capacity: 1000 Gallons

Accommodations

Total Cabins: 2

Hull and Deck Information

Hull Material: Fiberglass

Engine Information

Engines: 1

Manufacturer: Cummins

Model: QSM11

Engine Type: Inboard

Fuel Type: Diesel

PHOTOS



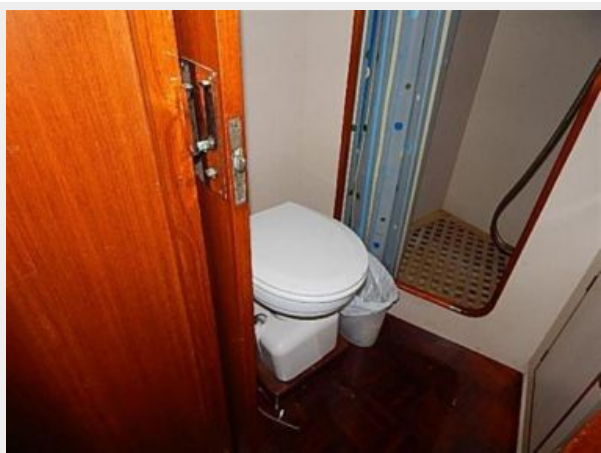
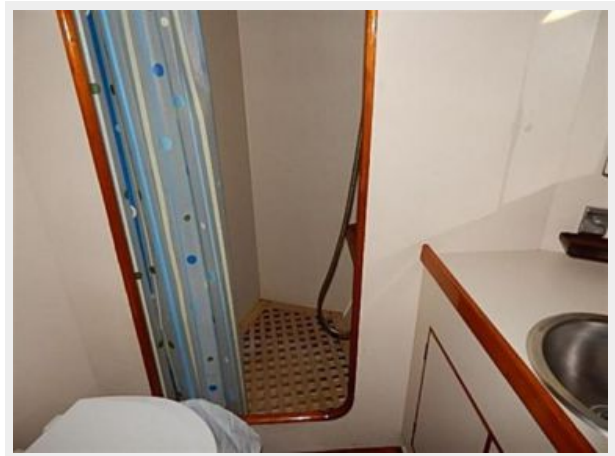


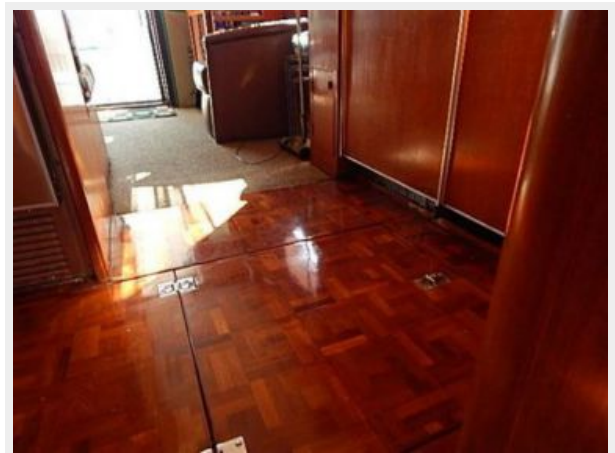






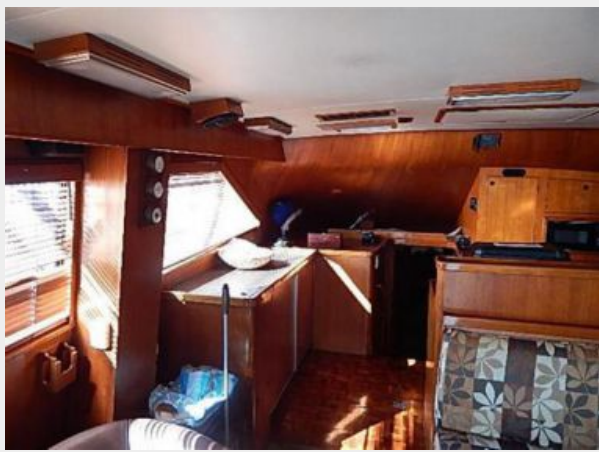
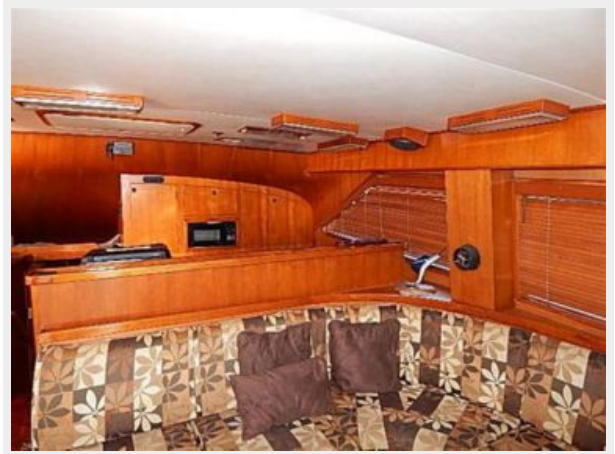


















CONTACTS

Andrey Shestakov, leading yacht broker of the sales department of Shestakov Yacht Sales Inc. Shestakov Yacht Sales Inc., the official representative of the Miami/Fort Lauderdale FL headquarters.

Contact details

Email: andrey@shestakovyachtsales.com

Web: shestakovyachtsales.com/en/

Telephones

USA: +1(954)274-4435

Office hours

Monday – Saturday: **9:00 - 21:00** EDT

Sunday: **closed**

Address



Harbour Towne Marina, 850 NE 3rd St,
STE 213, Dania, FL 33004