

CHECK SIX — SILVERTON



Судостроитель: SILVERTON

Год постройки: 2004

Модель: Крейсер

Цена: ЦЕНА ЯХТЫ ПО ЗАПРОСУ

Местонахождение: United States

Длина общая: 42' 0" (12.80m)

Ширина: 14' 11" (4.55m)

Макс. осадка: 3' 7" (1.09m)

Купить **CHECK SIX — SILVERTON** а также выбрать подходящую вам яхту из нашего каталога яхт вам поможет опытный яхтенный брокер Андрей Шестаков. На сегодняшний день компания **Shestakov Yacht Sales Inc.** имеет большое количество яхт в собственном списке продаж, а также тесно сотрудничает со всеми крупными яхтенными производителями по всему миру.

Для того чтобы купить яхту **CHECK SIX — SILVERTON** а также проконсультироваться по любому вопросу связанному с покупкой, продажей, чартером яхт позвоните по телефону **+7(918)465-66-44**.

ОГЛАВЛЕНИЕ

ОГЛАВЛЕНИЕ	2
ХАРАКТЕРИСТИКИ	5
Обзор	5
Основная информация	5
Размеры	5
Скорость, вместимость и масса	5
Размещение	6
Корпус и палуба	6
Информация о двигателе	6
ПОДРОБНОЕ ОПИСАНИЕ	7
Introduction	7
Vessel Walkthrough & Accommodations	7
Salon	8
Galley	8
Master Stateroom	8
Guest Stateroom	9
Navigation & Electronics Equipment	9
Electrical	9
Mechanical	10
Deck and Hull Equipment	10
Fishing Equipment	11
Исключения	11
Отказ от ответственности	11
ФОТОГРАФИИ	12
Stern View	12
Large Cockpit/Entrance to Salon	12
Salon to Starboard	12
Raised Dinette and Galley	12

Galley to Starboard	12
Nova Kool Main Refrigerator/Freezer	12
Additional Nova Kool Refrigerator/Freezer	13
Master Stateroom Forward	13
Master Stateroom to Port	13
Master Stateroom to Starboard	13
Head to Starboard	13
Master Stateroom Aft	13
Separate Shower to Port	14
MSR Access to Head and Passageway	14
Guest Stateroom to Port	14
Guest Stateroom	14
Galley Looking Aft	15
Salon Aft	15
Salon Entertainment Center	15
Overhead Rod Storage	15
Electrical Panel	16
Floor Plan	16
Cockpit Sink/Tackle Storage/Fishfinder Monitor	16
Lee's Miami Fighting Chair	16
Cockpit Lazarette Storage	17
Cockpit Wash Down	17
Molded Steps to Flybridge	17
Rocket Launchers	17
Helm Seats	17
Flybridge Helm	17
Electronics	18
Flybridge Electrical Panel	18
Flybridge Guest Seating	18

Bow View from Flybridge	18
Substantial Rails around Bow	18
Windlass	18
Foredeck and Flybridge View	19
Anchor Locker	19
Port Side Deck Forward	19
Comfortable Ride!	19
Yanmar Port Engine	20
Yanmar Starboard Engine	20
Racor Filter	20
Kohler Genset	20
Isolation Transformer	20
Marine Batteries	20
Heading to the Bahamas!	21
КОНТАКТЫ	22
Контактная информация	22
Телефоны	22
Время работы	22
Адрес	22

ХАРАКТЕРИСТИКИ

Обзор

CHECK SIX is a comfortable flybridge sedan and makes a great family cruiser, while still allowing for the occasional sportfishing trip. She has a centerline Master Stateroom forward and a Guest Stateroom with double berth amidship to port. Also to port there is a large shower separate from the Head, which is to starboard. There is a large salon with dinette and a down galley with lots of storage. The interior wood is finished in a beautiful cherry with earth tone fabrics. The steps to the flybridge are molded making access much more practical and safer than a ladder. The flybridge has two helm seats, guest seating forward of the helm, full enclosure, a fiberglass molded hardtop and good electronics. The side decks are wide allowing safe access to the bow. The huge cockpit has an engine access hatch, transom door, swim platform, fighting chair, and wash down fittings.

Easy to see - just 45 minutes north of the West Palm Beach airport.

Основная информация

Тип судна: Крейсер	Подкатегория: Sedan Cruiser
Модельный год: 2004	Год постройки: 2004
Страна: United States	Верх: Hardtop
Открытая палуба мостика: Да	Кубрик: Да

Размеры

Длина общая: 42' 0" (12.80m)	Ширина: 14' 11" (4.55m)
Макс. осадка: 3' 7" (1.09m)	

Скорость, вместимость и масса

Водоизмещение: 26300 Pounds	Вместимость воды: 200 Gallons
Вместимость сточного бака: 40 Gallons	Объем топливного бака: 524 Gallons

Размещение

Всего кают: 2

Всего коек: 2

Спальные места: 4

Всего ком. состава: 1

Корпус и палуба

Материал корпуса: Fiberglass

Информация о двигателе

Двигатели: 2

Производитель: Yanmar

Модель: 6LY2A-STP

Тип двигателя: Inboard

Тип топлива: Diesel

ПОДРОБНОЕ ОПИСАНИЕ

Introduction

CHECK SIX is a full-featured cruising/sportfishing boat with size, style, and performance. She is extremely clean with a spacious Flybridge, large Cockpit, open Salon, Galley, Dinette, and two Staterooms. She is **LIFT KEPT** and very well cared for by a knowledgeable Captain-Owner. Whether you are planning a day on water, a weekend getaway, or extended cruise, **CHECK SIX** is ready to accommodate.

Vessel Walkthrough & Accommodations

As you enter the Salon through the sliding glass door you find a beige leather dual reclining sofa with a cherry coffee table starboard, and entertainment center opposite to port side. There is a flat screen television with BOSE stereo system and Bose speakers. The forward area of the Salon has a large "U" shaped dinette with beige leather settee and Hi-Lo cherry table. The Galley is down and features upper & lower cherry cabinets, Corian counter top with integrated sink, two-burner electric cook top, built-in microwave/convection oven, two AC/DC refrigerator/freezers, coffee maker, and hardwood flooring.

The fully air conditioned interior is carpeted and comfortable with beautiful cherry woodwork, upgraded lighting, designer accessories and custom blinds. There are two Staterooms with designer curtains, drapes, and bedding. The forward Master Stateroom features an island queen berth, under-berth storage, and two hanging lockers. The port side mid-ship Guest Stateroom has a double berth, under-berth storage, and hanging locker. The starboard Head compartment (accessible from the MSR and the passageway) has a Vacuflush head and mirror vanity with Corian counter top and an integrated sink. The shower compartment is separate located on the port side with access from either stateroom.

The Cockpit is large and deep with sink, in-deck fish box, transom door, swim platform, fighting chair, and lots of cockpit space. There is ample room for casual seating, dining, and entertaining or sportfishing. Wide side decks lead forward to a foredeck with stainless steel bow rail and bow pulpit with anchor and electric windlass.

The enclosed flybridge is accessible by a molded stairwell on the port side. The Flybridge has a centerline helm station, twin comfortable, adjustable helm seats, forward lounge and forward starboard side wraparound lounge. The helm station is equipped with full navigation electronics and engine gauges. She is powered by twin Yanmar 440-hp engines with less than 800 well-cared-for hours. A Kohler 8 KW generator provides off-shore electrical power and two reverse cycle AC units maintain interior comfort. This exceptional Silverton Convertible is well equipped, professionally maintained to "like new" standards, and ready to cruise.

Salon

She features an open and airy Salon with a "U" shaped Dinette forward and to portside. This Dinette has a large Hi-Lo cherry table and from the Dinette one can easily see through the side Salon windows for an excellent view. What's unique to the 42 Silverton is that the front windscreen is not fiberglass - it is windows, affording lots of light and a view forward. On the portside of the Salon is the Entertainment system consisting of a flat screen LG TV and BOSE stereo system with BOSE speakers. There is a DC to AC inverter for the entertainment system, so you don't have to run the genset at anchor to watch TV. On the starboard side is the dual reclining sofa with a nice cherry coffee style table (top hinges to reveal storage). There is a cherry wood liquor cabinet with storage, along with opening storage cupboards port and starboard. The floor is carpeted with overhead engine room access for major repairs. The side windows have mini blinds. The entire Salon is finished in a rich cherry wood. There is a cleverly designed fishing rod compartment in the ceiling that drops down for storage of up to 8 rods and reels and plastic storage bins for fishing equipment. There are carpet runners and a central vacuum system.

Galley

The Galley is located down three steps on the starboard side and is also the passageway to the Staterooms and Head. It has Amtico® hardwood flooring, Corian® countertops, a two-burner electric stove, Sharp carousel microwave/convection oven, two under-counter refrigerator/freezers, and abundant storage drawers and cabinets. The interior is bright and airy with rich cherry cabinetry throughout. Upper & lower cherry cabinets - lots of storage!

- Corian® Counter Top
- Integrated Sink
- Amtico® Wood Flooring
- Two-Burner 110v Electric Cook Top
- Microwave Convection Oven
- (2) AC/DC Nova Kool Refrigerator/Freezer
- Mr. Coffee Coffee Maker
- (10) Drawers
- (7) Overhead Cabinets
- (2) Under Counter Cabinets

Master Stateroom

The Master Stateroom is fully forward and features a lift up island berth. There are two drawers for storage at its base. There are cherry shelves with bird's eye maple tops on both the port and starboard side hulls, along with two hanging closets. There is an overhead opening hatch with

screen. A flat screen TV is mounted on top of the port side closet. Rich cherry wood appoints the Master Cabin with a carpeted floor. On the port side is a door leading to the ensuite separate shower stall with molded seat. This shower stall is also accessible from the Guest Stateroom. On the starboard side is a door leading to the ensuite Head. This Head is also accessible from the passageway for Guest/Day Head use. The head has a large mirrored medicine cabinet, sliding door storage cabinet and under vanity cabinet storage. There is an opening porthole.

Guest Stateroom

The Guest Stateroom is located mid-ship on the portside opposite the Galley. The berth is athwartship and is a large double with storage underneath. There is a cherry overhead double cabinet and a closet for more storage. One opening porthole provides natural light. Carpet is on the floor. There is a door ensuite for access to the separate shower stall. The Head serving this Stateroom is in the passageway opposite the Stateroom door.

Navigation & Electronics Equipment

- Garmin 3210 C-Map GPS/FF
- Garmin GPS Map 440S Depth
- Simrad AP26 Autopilot with R3000X wired remote handheld autopilot
- Furuno 10" Radar
- ICOM M502 VHF radio
- ICOM RAM Mic in cockpit
- Lowrance Digital Depthfinder
- ITT Jabsco Spotlight controls
- Maxwell windlass control
- SONY 52w AM/FM Stereo CD changer
- (2) Helm Seats
- Full engine gauges and instrumentation
- Cable shifter and throttle assemblies
- Richie Compass
- Glendinning synchronizer
- Molded fiberglass hardtop
- 3-sided enclosure with U-zips
- Molded steps to flybridge with handrails
- KVH Satellite TV system
- Destroyer style SS steering wheel
- Trim tab controls
- Marine Tech Safe-T-Alert
- Acer X163W Monitor in Cockpit
- Radar arch
- (1) 12v outlet
- (1) 110v duplex outlet

Electrical

- 8 kW Kohler generator w/soundbox with Racor 500 fuel filter (1055 hours)
- (7) Marine batteries
- ProMariner Protec 40 amp 4-stage battery charger
- 2 zone reverse cycle air conditioning and heat

- Dockside cable TV and phone hookups

Mechanical

There is good access to the engine room from the hatch in cockpit. The engine room is set up with generator and batteries forward allowing good access to all sides of the engines.

- Sea-Fire 1301 fire suppression system (needs recertification)
- (2) bilge blowers
- (3) automatic/manual bilge pumps
- Bridge controls
- Engine alarm
- High water alarm
- Emergency engine stop
- Glendinning automatic engine synchronizer
- Fresh water cooling system
- Water and holding tank monitors
- Overboard discharge macerator
- Dripless stuffing boxes
- (2) Racor 900 fuel filters
- Engine and generator oil change system
- Engines & fume detector fuel shut-off valve
- Hydraulic steering
- Bennett trim tabs
- ZF transmissions
- Raw sea water strainer on main engines
- Fresh water faucet in engine room
- Dockside water hookup
- (2) SELTEX
- Glendinning Cablemaster power cord retriever

Please Note: Engine hours shown here are as of the original listing date and are an account of what the Listing Broker was told by the Owner and/or actual reading of the engine hour meters. The Broker cannot guarantee the actual true hours. It is the responsibility of the Buyer and/or his Agent/Surveyor to verify engine hours, as well as, all other representations noted on the Listing Brochure.

Deck and Hull Equipment

- Molded bow pulpit w/anchor roller
- Maxwell remote anchor windlass (foot button at bow and switch at helm)
- ITT Jabsco remote spotlight Fiberglass hardtop w/deck lights
- Three sided FB enclosure - Eisenglass on sides, EZ2CY in front 3 panels
- Molded stairway access up to flybridge
- Flybridge seating for eight with lots of under seat storage
- Abundant flybridge storage
- Fresh & Sea Water Washdown in Cockpit
- Foredeck Hatchover Master Stateroom
- Fenders with lines; Swim Platform with ladder

- Overhead opening hatch in FB hardtop
- Windshield cover; Sun shades for cockpit and front windshield
- Cockpit sink
- Cockpit engine room access hatch
- Cockpit lift out fishbox
- Lee's Miami Fighting Chair; Cockpit coaming pads
- Gold rocket launchers; Flush rod holders; Tackle locker (4 boxes)
- Large Aft Lazarette

Fishing Equipment

Although CHECK SIX is equipped for fishing, she has been lightly fished.

- Lee's Miami cockpit fighting chair
- Lift out fish box
- Cockpit sink
- (4) Tacklebox storage
- Flybridge overhead rod holders
- Stinger
- (2) Perko single spreader outriggers
- (9) Rocket launchers
- (8) Flush rod holders
- Fresh and saltwater washdown in cockpit
- Slave monitor displaying the screen on Garmin 3210 in cockpit

Not included in sale price of vessel but negotiable:

- (7) Matched sets of Billfisher SeaStriker standup rods with Shimano TDL25 reels

Исключения

При продаже яхты исключаются личные вещи владельца.

Отказ от ответственности

Компания предоставляет описание судна или яхты добросовестно, но не может гарантировать точность этой информации, а также не ручается за техническое состояние. Покупатель должен проинструктировать своих агентов или оценщиков исследовать представленную информацию более подробно, по собственному желанию. Продажа судна или яхты, изменение цены или снятие с продажи будет происходить без предварительного уведомления.

ФОТОГРАФИИ

Stern View



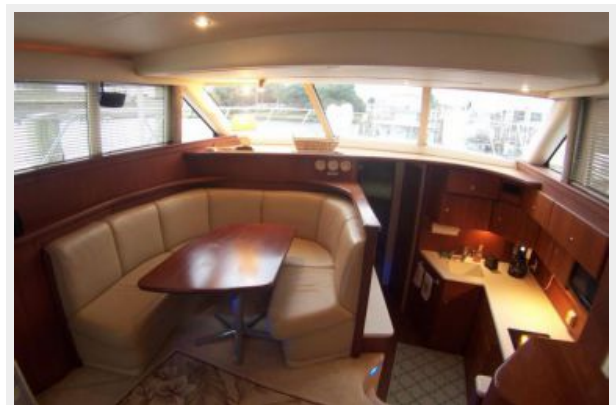
Large Cockpit/Entrance to Salon



Salon to Starboard



Raised Dinette and Galley



Galley to Starboard



Nova Kool Main Refrigerator/Freezer



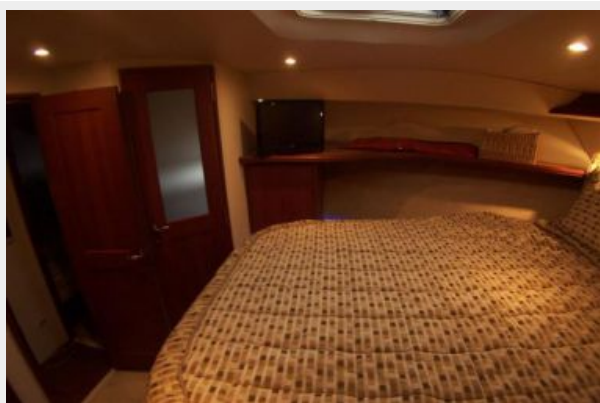
Additional Nova Kool Refrigerator/Freezer



Master Stateroom Forward



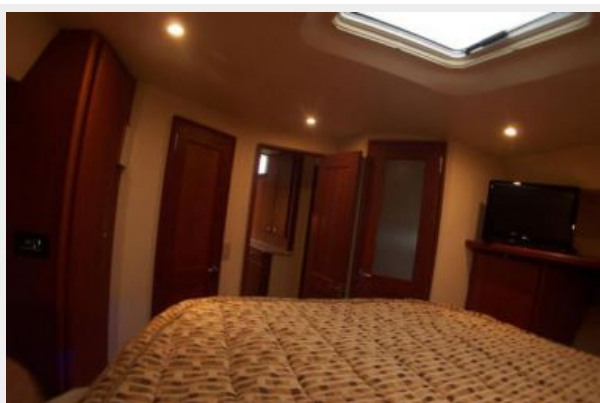
Master Stateroom to Port



Master Stateroom to Starboard



Master Stateroom Aft



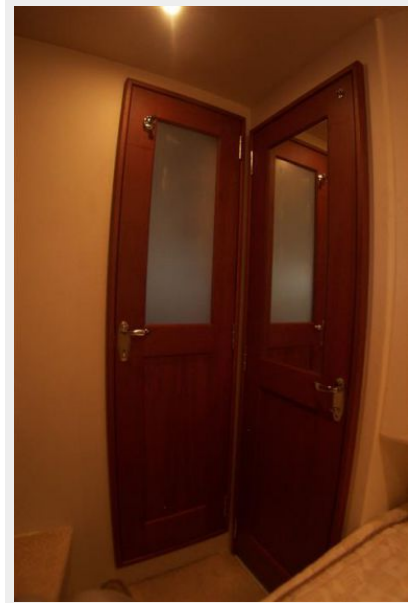
Head to Starboard



Separate Shower to Port



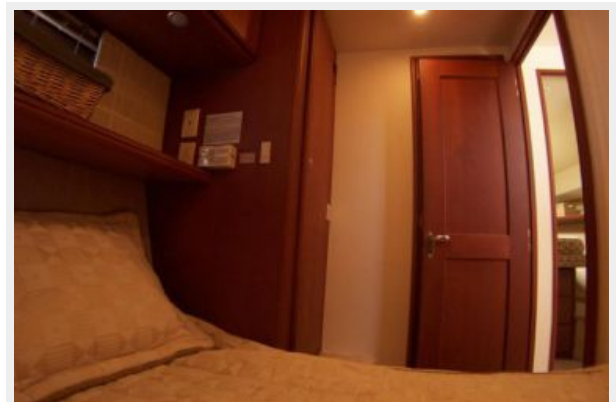
MSR Access to Head and Passageway



Guest Stateroom to Port



Guest Stateroom



Galley Looking Aft



Salon Aft



Salon Entertainment Center



Overhead Rod Storage



Electrical Panel



Floor Plan



Cockpit Sink/Tackle Storage/Fishfinder Monitor



Lee's Miami Fighting Chair



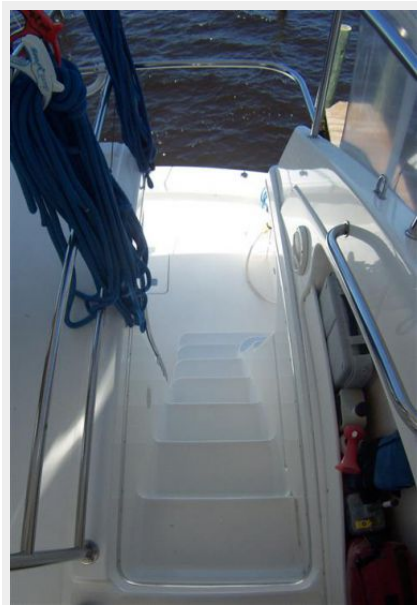
Cockpit Lazarette Storage



Cockpit Wash Down



Molded Steps to Flybridge



Rocket Launchers



Helm Seats



Flybridge Helm



Electronics



Flybridge Electrical Panel



Flybridge Guest Seating



Bow View from Flybridge



Substantial Rails around Bow



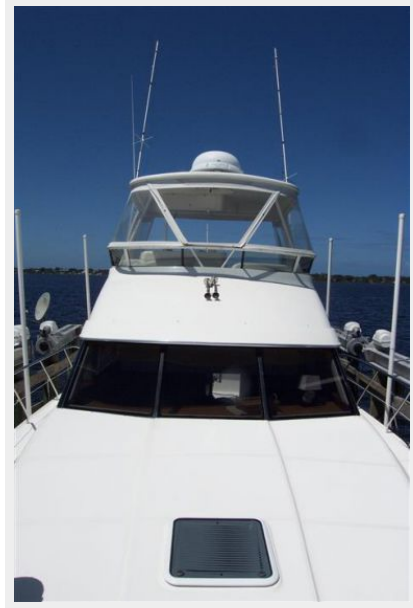
Windlass



Anchor Locker



Foredeck and Flybridge View



Port Side Deck Forward



Comfortable Ride!



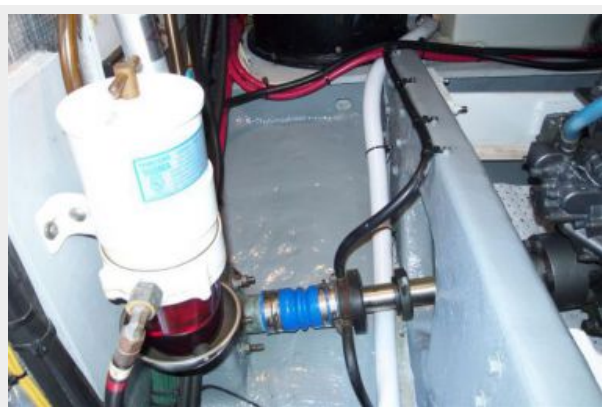
Yanmar Port Engine



Yanmar Starboard Engine



Racor Filter



Kohler Genset



Marine Batteries



Isolation Transformer



Heading to the Bahamas!



КОНТАКТЫ

Андрей Шестаков (Andrey Shestakov) – ведущий яхтенный брокер отдела продаж яхт и судов компании Shestakov Yacht Sales Inc. Официальный представитель Shestakov Yacht Sales Inc. для русскоговорящих клиентов в центральном офисе компании в Майами/Форт Лодердейл/Флорида/США.

Контактная информация

Email: andrey@shestakovyachtsales.com

Web: shestakovyachtsales.com

Телефоны

Краснодарский край: **+7(918)465-66-44**

США, Майами, Флорида: **+1(954)274-4435**

Время работы

Понедельник – Суббота: **9:00 - 21:00**
EDT

Воскресенье: **Закрето**

Адрес



Harbour Towne Marina, 850 NE 3rd St,
STE 213, Dania, FL 33004