

BELLA LUNA — SILVERTON



Судостроитель: SILVERTON

Год постройки: 2003

Модель: Крейсер

Цена: ЦЕНА ЯХТЫ ПО ЗАПРОСУ

Местонахождение: United States

Длина общая: 43' 0" (13.11m)

Ширина: 14' 10" (4.52m)

Макс. осадка: 3' 9" (1.14m)

Купить **BELLA LUNA — SILVERTON** а также выбрать подходящую вам яхту из нашего каталога яхт вам поможет опытный яхтенный брокер Андрей Шестаков. На сегодняшний день компания **Shestakov Yacht Sales Inc.** имеет большое количество яхт в собственном списке продаж, а также тесно сотрудничает со всеми крупными яхтенными производителями по всему миру.

Для того чтобы купить яхту **BELLA LUNA — SILVERTON** а также проконсультироваться по любому вопросу связанному с покупкой, продажей, чартером яхт позвоните по телефону **+7(918)465-66-44**.

ОГЛАВЛЕНИЕ

ОГЛАВЛЕНИЕ	2
ХАРАКТЕРИСТИКИ	5
Обзор	5
Основная информация	5
Размеры	5
Скорость, вместимость и масса	5
Размещение	5
Корпус и палуба	6
Информация о двигателе	6
ПОДРОБНОЕ ОПИСАНИЕ	7
Vessel Walkthrough & Accommodations	7
Grand Salon	8
Galley	8
Master Stateroom	9
Guest Stateroom	9
Navigation & Electronics Equipment	9
Electrical Equipment	10
Engine and Mechanical	10
Deck and Hull Equipment	11
Исключения	11
Отказ от ответственности	11
ФОТОГРАФИИ	12
Molded Steps from Swim Platform to Aft Cockpit	12
Easy Access to Dinghy	12
Salon Entrance to Port	12
Salon to Port	12
The Chef Remains Included in Salon Entertaining!	12
Galley to Starboard	12

Guest Stateroom Forward	13
Guest Stateroom to Starboard	13
Separate Guest Shower to Starboard	13
Guest/Day Head to Port	13
Guest Stateroom to Port	13
Guest Stateroom Looking Out to Galley	13
Salon to Starboard	14
Comfortable Dinette	14
Electrical Panel	14
Entrance to Master Stateroom from Salon	14
Master Island Queen Athwartship	14
Master Open Sink Area	14
Master Head (Left of Sink)	15
Master Shower (Right of Sink)	15
Entrance to Salon and Molded Steps to Flybridge	15
Floor Plan	15
Cockpit to Port	15
Cockpit to Starboard	15
Additional Freezer	16
Flybridge Forward	16
Helm Seating	16
Helm	16
Helm Gauges	16
Raymarine Radar/Chartplotter/GPS	16
Simrad Autopilot/ICOM VHF	17
Bow View with Sunbrella Covers	17
Maxwell Windlass	17
Great Seating Layout for Entertaining	17
Starboard Side Deck Aft	17

Port Side Deck Aft	17
Starboard View	18
Oil Exchange System/Batteries	18
Port Cummins Diesel	18
Starboard Cummins Diesel	18
Bow View	18
КОНТАКТЫ	19
Контактная информация	19
Телефоны	19
Время работы	19
Адрес	19

ХАРАКТЕРИСТИКИ

Обзор

A very spacious motor yacht with all the amenities for cruising and living aboard. Raised walkways from the bridge deck to the bow provide for a full beam salon. The covered aft deck provides plenty of space for entertaining with a wet bar, sink and icemaker. Curved molded staircase from swim platform to aft deck makes boarding easy.

Easy to see - just 45 minutes north of West Palm Beach airport.

Основная информация

Тип судна: Крейсер	Модельный год: 2003
Год постройки: 2003	Страна: United States
Верх: Bimini Top	Открытая палуба мостика: Да
Кубрик: Да	

Размеры

Длина общая: 43' 0" (13.11m)	Ширина: 14' 10" (4.52m)
Макс. осадка: 3' 9" (1.14m)	

Скорость, вместимость и масса

Водоизмещение: 31750 Pounds	Вместимость воды: 150 Gallons
Вместимость сточного бака: 68 Gallons	Объем топливного бака: 400 Gallons

Размещение

Всего кают: 2	Всего коек: 2
Спальные места: 4	Всего ком. состава: 2

Корпус и палуба

Материал корпуса: Fiberglass

Информация о двигателе

Двигатели: 2

Производитель: Cummins

Модель: 6СТА8.3-М3

Тип двигателя: Inboard

Тип топлива: Diesel

ПОДРОБНОЕ ОПИСАНИЕ

Vessel Walkthrough & Accommodations

BELLA LUNA is a very spacious motor yacht - a lot of boat for her length! You are not 'squeezed' as is the case with so many other vessels with the same LOA. It truly feels like your "condo on the water". Step off the dock onto the Aft Sundeck via doors to port or starboard. The spacious Aft Deck provides plenty of space for guests, with a wet bar and sink, U-Line ice maker, ensures refreshments close at hand. Halogen lighting is a nice touch for night time entertaining. Through the port aft transom door, there is a molded in, curved stairway providing access from the aft deck to the extra large swim platform with retractable ladder and freshwater shower, making this a perfect platform for all of your water sports activities. It's even lit for nighttime use. A motorized crane easily lifts the RIB on and off a heavy duty cradle. There is storage for fenders and dock lines here as well.

From the aft deck, step up to the spacious bridge. There is seating here for everyone. A curved lounge seats 4, while an L shape lounge seats an additional four guests. A large three seat bench seat is located at the helm, with good storage space behind for life jackets, charts, etc. The 43 is exceptionally well laid out for entertaining due to the size of the Flybridge and Aft Deck areas and the open feeling and easy access between the two. A Clarion am/fm CD system provides entertainment in this area. Silverton's signature 'sidewalk' layout provides doors from the Bridge port and starboard, accessing walkways forward along both sides of the cabin house. This arrangement, instead of the traditional side decks, allows the full beam interiors so apparent when you step inside. On the bow there is a Bomar hatch providing natural lighting for the forward stateroom. and sun pads to work on that tan.

Stepping into the Salon from the aft deck, most people are first struck by the look and feel. A very spacious interior indeed! Beautifully crafted cherry wood is in abundance throughout the well thought-out interior. The grand Salon features a massive, comfortable settee while the equally large dinette provides additional seating and storage. The Galley, Salon and the dinette are essentially all in one large social room. There is a ottoman/coffee table (with storage) in front of the settee. An entertainment system is to port, including DVD and VHS players, featuring all JVC components. There is also a Bose surround sound system for both the Salon and both Staterooms. A Go-Anywhere satellite system and 27" JVC TV provide TV whenever and wherever you want it. The Galley has all of the conveniences you would expect, and features Corian counter tops and plenty of storage. Please refer to the Galley section under "FULL SPECS" for more details

The forward Guest Stateroom has a queen centerline berth while the Head, to port, features access from both this Guest Stateroom and the Salon area, a nice touch for guests. There is a TV/VCR combo, hanging locker, and a large stall shower to starboard also ensuite to the Guest Stateroom

The Master stateroom, located aft, features a queen island berth athwartships to starboard with

great storage under. There is an ensuite Head to port, and completely separate, large stall shower to port as well, separated by the open sink and vanity. There are three cedar lined hanging lockers, very nice recessed halogen lighting, Toshiba TV/VCR, and a large window across the stern which provides natural lighting, and also opens to catch the fresh breezes.

Grand Salon

The large "L" Settee is to starboard with its combo ottoman/coffee storage table whereas the large "L" shaped Dinette is more forward and to port with the hi-lo Dinette table in front of it. Both are finished with the same color and grade leather and are on the same floor level. The floor is finished in carpet. A carpeted lift up hatch leads to the engine room. There are other lift out carpeted hatches for more serious engine room overhead access should it be necessary. There is overhead cherry cabinet storage aft in the Salon. There is an entertainment center (BOSE stereo, AM/FM radio, DVD player) to port directly opposite of the Settee. Just next to it going up the stairs to the Sundeck is a cabinet housing the AC/DC circuit breaker panel. A 27" JCV TV is forward in the center windshield area for easy viewing from either the Dinette or the Settee.

- Overhead Cabinets
- "L" Settee couch
- Entertainment Center
- Ottoman/Coffee Table
- Carpeting
- Blinds
- Oriental style throw rug
- Hatch entranceway to engineroom
- JVC 27" colorTelevision
- Bose DVD Player
- JVC VCR
- Bose Surround Sound Stereo
- Bose CD Player
- Cherry Wood Interior
- Companionway to Sundeck
- Opening panoramic windows

Galley

The Galley is really part of the entire Salon area, just down one step from the Dinette/Salon Settee. Its sole is hardwood, with Corian countertops. It is finished in Cherry wood with lots of drawer and cabinet storage. The overhead windshield lets in lots of natural light and there is plenty of headroom.

- Seaward Princess 3 burner ceramic cook top with full oven
- Sharp Convection microwave oven
- Lots of storage in drawers and cabinets
- Corian countertops
- 12v Exhaust Fan
- MABE Refrigerator & Freezer 120v/12v
- SS sink with Delta faucet
- WalVac built-in vacuum system
- Atwood 10.5 gal hot water heater12v lighting
- Hardwood flooring

Master Stateroom

The Master Stateroom is full beam and is aft from the Salon down three steps, with a large queen island berth athwarships to starboard. To port is a sink/vanity centered between two cherry wood doors. To the left of the sink is the enclosed ensuite head and right is a large separate shower. There is a large opening window aft and lots of drawer and closet space.

- Queen Island Berth
- Designer comforter and pillows
- Separate Stand Up Head - Vacu-Flush
- Separate Stall Shower
- Vanity Sink
- Carpet
- Mirrors
- Magnavox Color Television
- Air Conditioning
- Hanging Locker
- Cabinets

Guest Stateroom

The Guest Stateroom is located in the bow with a queen island berth, lots of drawer storage and a cedar closet. It also has access to its own separate shower and shared access to a Guest/Day Head. There is a large overhead opening hatch and two side opening portlights.

- Located Forward in bow
- Centerline Queen Berth
- Vacu-flush Head
- Seperate Shower
- Carpet
- Mirrors
- TV
- JVC VCR
- Air conditioning
- Drawers
- Hanging Locker
- Cabinets

Navigation & Electronics Equipment

- Raymarine RL80C 48 mi color radar, chart plotter, and depth sounder
- Icom IC-M412 VHF
- Raymarine ST60digital depth sounder
- Simrad AP-22 autopilot
- Full complement of FARIA engine guages
- Anchor windlass remote controls
- Bow thruster controls

- ITT JABSCO electric searchlight
- Ritchie compass
- Sony CDX-CA705M AM/FM stereo CD / XM
- Manual discharge pull cable for engine room fire extinguisher
- SS Destroyer style steering wheel with SeaStar hydraulic steering
- Twin lever engine throttle & shifter controls
- Glendinning engine synchronizer switch

Electrical Equipment

- Batteries (9)
- Battery parallel switch
- Professional Mariner Protech-4 four step battery charger (2)
- Kohler 10 Kw generator in sound shield/hush box
- 12V DC electrical system
- 110V AC electrical system
- Glendinning cablemaster motorized dockside electrical cable

Engine and Mechanical

- Marine Air three-zone reverse cycle air conditioner with Elite digital controls
- Bow thruster
- Bridge engine controls
- Emergency engine stop
- Engine Alarm
- Halon automatic, manual fire control system
- Fresh water cooling system
- Fuel filters
- Oil X-change-R system
- Racor fuel filters
- Walker Air Seps
- Dripless shaft seals
- Engine fuel shut-off valve
- Fume detector
- Thermal, acoustical insulation
- Raw water sea strainers
- Sea Star hydraulic wheel steering
- Glendinning Synchronizer
- Bennett trim tabs
- ZF Transmissions
- Hot water heater

Please Note: Engine hours shown here are as of the original listing date and are an account of what the Listing Broker was told by the Owner and/or actual reading of the engine hour meters. The Broker cannot guarantee the actual true hours. It is the responsibility of the Buyer and/or his Agent/Surveyor to verify engine hours, as well as, all other representations noted on the Listing Brochure.

Deck and Hull Equipment

- Danforth type anchor
- Bow pulpit with rails
- Side stanchions with lifelines
- Bridge curtains (front Eisenglass new 2012)
- US Coast Guard safety package
- Transom shower
- Electrical storage locker on transom
- Foredeck sun pads and drink holders
- Freshwater deck wash down system
- Fenders and lines
- Navigation lights
- Single, remote controlled electric search light
- Swim platform
- Boarding ladder
- Maxwell low profile electric windlass
- 10' 2004 Aquascan RIB with 9.8 Tohatsu OB with electric start

Исключения

При продаже яхты исключаются личные вещи владельца.

Отказ от ответственности

Компания предоставляет описание судна или яхты добросовестно, но не может гарантировать точность этой информации, а также не ручается за техническое состояние. Покупатель должен проинструктировать своих агентов или оценщиков исследовать представленную информацию более подробно, по собственному желанию. Продажа судна или яхты, изменение цены или снятие с продажи будет происходить без предварительного уведомления.

ФОТОГРАФИИ

Easy Access to Dinghy



Molded Steps from Swim Platform to Aft Cockpit



Salon Entrance to Port



Salon to Port



The Chef Remains Included in Salon Entertaining!



Galley to Starboard



Guest Stateroom Forward



Guest Stateroom to Starboard



Separate Guest Shower to Starboard



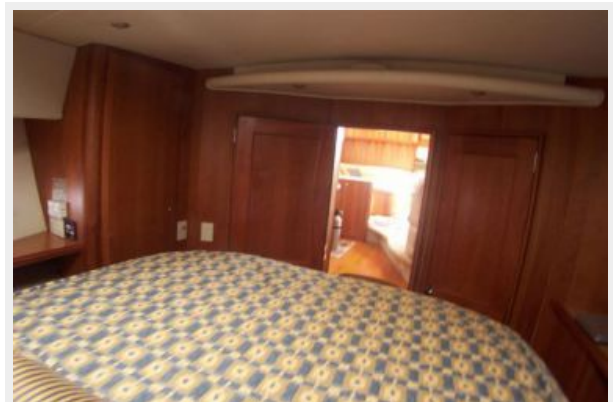
Guest/Day Head to Port



Guest Stateroom to Port



Guest Stateroom Looking Out to Galley



Salon to Starboard



Comfortable Dinette



Electrical Panel



Entrance to Master Stateroom from Salon



Master Island Queen Aftwartship



Master Open Sink Area



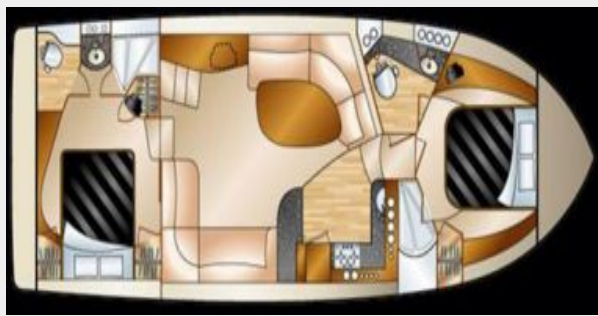
Master Head (Left of Sink)



Master Shower (Right of Sink)



Floor Plan



Entrance to Salon and Molded Steps to Flybridge



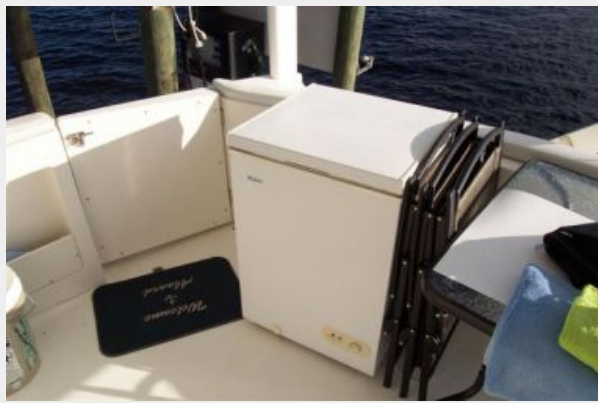
Cockpit to Port



Cockpit to Starboard



Additional Freezer



Flybridge Forward



Helm Seating



Helm



Helm Gauges



Raymarine Radar/Chartplotter/GPS



Simrad Autopilot/ICOM VHF



Bow View with Sunbrella Covers



Maxwell Windlass



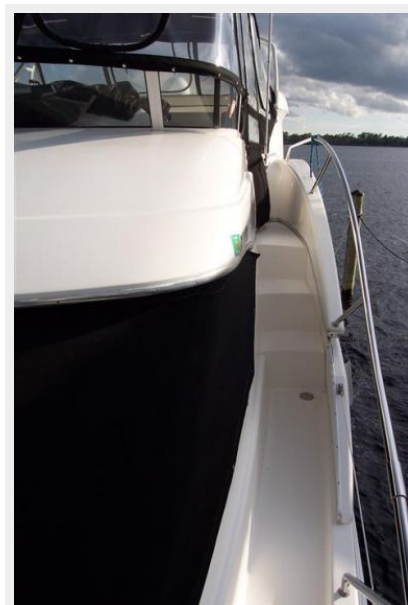
Great Seating Layout for Entertaining



Starboard Side Deck Aft



Port Side Deck Aft



Starboard View



Oil Exchange System/Batteries



Port Cummins Diesel



Starboard Cummins Diesel



Bow View



КОНТАКТЫ

Андрей Шестаков (Andrey Shestakov) – ведущий яхтенный брокер отдела продаж яхт и судов компании Shestakov Yacht Sales Inc. Официальный представитель Shestakov Yacht Sales Inc. для русскоговорящих клиентов в центральном офисе компании в Майами/Форт Лодердейл/Флорида/США.

Контактная информация

Email: andrey@shestakovyachtsales.com

Web: shestakovyachtsales.com

Телефоны

Краснодарский край: **+7(918)465-66-44**

США, Майами, Флорида: **+1(954)274-4435**

Время работы

Понедельник – Суббота: **9:00 - 21:00**
EDT

Воскресенье: **Закрыто**

Адрес



Harbour Towne Marina, 850 NE 3rd St,
STE 213, Dania, FL 33004