

TIGER PAW — CRUISERS YACHTS



Builder: [Cruisers Yachts](#)

LOA: 42' 0" (12.80m)

Year Built: 2010

Beam: 13' 6" (4.11m)

Model: Motor Yacht

Max Draft: 3' 8" (1.12m)

Price: PRICE ON APPLICATION

Location: United States

Our experienced yacht broker, Andrey Shestakov, will help you choose and buy a yacht that best suits your needs **Tiger Paw — Cruisers Yachts** from our catalogue. Presently, at Shestakov Yacht Sales Inc., we have a wide variety of yachts available on our sale's list. We also work in close contact with all the big yacht manufacturers from all over the world.

If you would like to buy a yacht **Tiger Paw — Cruisers Yachts** or would like help answering any questions concerning purchasing, selling or chartering a yacht, please call **+1(954)274-4435**

TABLE OF CONTENTS

TABLE OF CONTENTS	2
SPECIFICATIONS	5
Overview	5
Basic Information	5
Dimensions	5
Speed, Capacities and Weight	5
Accommodations	5
Hull and Deck Information	5
Engine Information	6
DETAILED INFORMATION	7
Remarks	7
Galley	7
Interior Features	7
Master Stateroom	8
VIP Stateroom	8
Cockpit	8
Electrical	9
Electronics	9
Exclusions	9
Disclaimer	9
Exclusions	9
Disclaimer	10
PHOTOS	11
Salon	11
Salon	11
Salon	11
Salon	11
Galley	11

Galley	11
Master Stateroom	12
Galley	12
Master Stateroom	12
Master Stateroom	12
Master Head	13
Master Head	13
VIP Stateroom	13
VIP Stateroom	13
VIP Head	14
VIP Stateroom	14
VIP Head	14
VIP Head	14
Cockpit	15
Cockpit	15
Cockpit	15
Cockpit	15
Cockpit	15
Cockpit	15
Cockpit	15
Helm	16
Helm	16
Helm and Controls	16
Helm and Controls	16
Engine Hatch	16
Engine	16
Engine	17
Engine	17
Bow and Sunpad	17
Bow and Sunpad	17

Bow	17
Bow	17
Bow Profile	18
Bow	18
Swim Platform	18
Starboard Profile	18
Port Profile	19
Port Profile	19
Starboard Profile	19
Starboard Profile	19
Transom Profile	19
Transom Profile	19
Transom	20
CONTACTS	21
Contact details	21
Telephones	21
Office hours	21
Address	21

SPECIFICATIONS

Overview

Galati Yacht Sales has been committed to exceeding the expectations of its customers for more than 42 years, and we understand that purchasing a boat is a big decision. Our professional staff is here to assist you in every way – before, during and after the sale. Please feel free to contact us with any questions that you may have.

Basic Information

Category: Motor Yacht

Model Year: 2010

Year Built: 2010

Country: United States

Registration #: 1224745

Dimensions

LOA: 42' 0" (12.80m)

Beam: 13' 6" (4.11m)

Max Draft: 3' 8" (1.12m)

Speed, Capacities and Weight

Displacement: 23500 Pounds

Gross Tonnage: 1 Pounds

Water Capacity: 80 Gallons

Fuel Capacity: 300 Gallons

Accommodations

Total Cabins: 2

Hull and Deck Information

Hull Material: Fiberglass

Engine Information

Engines: 2

Manufacturer: Volvo

Model: IPS 600

Engine Type: Inboard

Fuel Type: Diesel

DETAILED INFORMATION

Remarks

The Cruisers 420 Sport Coupe is a bona fide member of the new generation of Express Cruisers and has elevated the class to an art form. This gorgeous boat has a two stateroom, two head layout and a spacious salon and galley but the wondrous accommodations only begin here. An extension of the salon, the helm area and cockpit can be fully enclosed or as open as you desire. The custom hardtop has an opening windshield and sunroof so you truly get the best of both scenarios. In the cockpit you have ample seating for many including a double wide helm seat, and there is also a wet bar, built in sink, electric grill, refrigerator and 20" TV with DVD player. The cockpit is also air conditioned and heated. There is an optional rumble seat too at the transom which turns the teak-decked activity platform into a comfortable place to sit and observe or hang out.

This very clean and low hour, single owner boat is heavily optioned with electronics including radar and has numerous desirable extras such as a chaise lounge bow cushion, central vacuum, teak and holly flooring in the salon and cockpit, underwater lights, Sirius Satellite Radio in the cockpit, KVH SAT TV, Ice Maker, Oil Change System, custom towel, pillow and linen package and more.

The Volvo IPS 600's boast 435 HP per engine and feature the "Joystick" docking which literally makes mooring the boat child's play but also gives the vessel excellent fuel economy with virtually no smoke, low vibration and noise with great performance. What a fantastic boat at an incredible pre-owned price!

Galley

- Granite countertops
- Stainless still sink
- Sharp Carousel Microwave/ convection oven
- Side-by-side Nova-Kool refrigerator/ freezer
- 2 Burners Princess Electric stove
- Sony FM/AM/MP3 Radio
- Fireboy Carbon Monoxide Alarm

Interior Features

- Cherrywood interior
- Cherrywood entry steps
- Teak & holly flooring
- Central air conditioning with reverse cycle heat Crescent shaped dinette seating

- Built-in liquor cabinet
- Sony Flatscreen TV Salon
- Premium entertainment package
- Ultraleather seating
- Central vacuum

Master Stateroom

- Queen island berth with mattress
- Sony Flatscreen LCD TV
- (2) Cedar lined hanging locker
- (2) Reading Lamps
- Fireboy Carbon Monoxide Alarm
- Overhead hatch
- Overhead Lithings

VIP Stateroom

- Side-by-side twin bunks with fuller cushion for queen berth conversion
- 19" Flatscreen LCD TV
- Cedar lined hanging lockers
- Reading Lamps

Cockpit

- Hardtop with manual sun roof and Over Head Lights
- Solid forward and side glass enclosure
- Aft cockpit enclosure
- •L Audio Speakers
- Climate control
- Wet bar with sink
- Vitrifrigo Ice Maker
- Cockpit table coverts to sunlounge
- Electric grill
- Cockpit flatscreen TV mount
- Foredeck anchor washdown
- Sony cockpit stereo/CD with iPod
- Hot & cold transom shower
- Aft U-Shaped cockpit seating
- Captain's double helm seat
- Helm companion lounge
- Electric engine hatch

- Cockpit courtesy lights

Electrical

Generator with only 210 hours

Electronics

(2) Dual Raymarine E120 displays

- HD Digital Raymarine Radar
- Raymarine ST8002 Smart AutoPilot
- Raymarine VHF
- Volvo Penta Joystick
- Furuno RD30 digital depth finder
- Compass
- Volvo Penta Engines monitors display
- Bennett trim tabs
- Electric engine hatch
- Remote spotlight
- Electric windlass
- Electronic Engine Controls
- Engine shutdown system
- Air horn
- Sony Marine RM-X60M with helm remote

Exclusions

Owner's personal property.

Disclaimer

The Company offers the details of this vessel in good faith but cannot guarantee or warrant the accuracy of this information nor warrant the condition of the vessel. A buyer should instruct his agents, or his surveyors, to investigate such details as the buyer desires validated. This vessel is offered subject to prior sale, price change, or withdrawal without notice.

Exclusions

Owner's personal belongings.

Disclaimer

The Company offers the details of this vessel or yacht in good faith but cannot guarantee or warrant the accuracy of this information nor warrant the condition of the vessel. A buyer should instruct his representatives, agents, or his surveyors, to investigate such details as the buyer desires validated. This vessel or yacht is offered subject to prior sale, price change, or withdrawal without notice.

PHOTOS

Salon



Salon



Salon



Salon



Galley



Galley



Galley



Master Stateroom



Master Stateroom



Master Stateroom



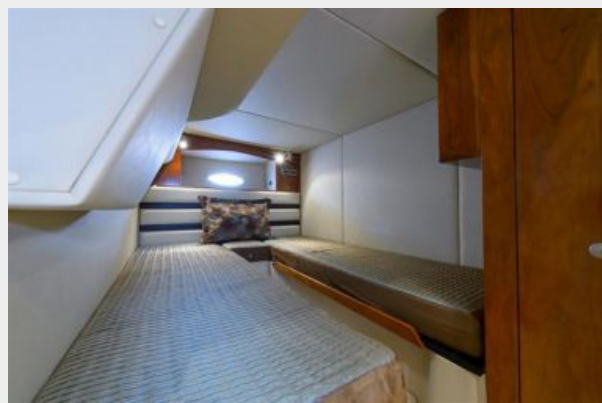
Master Head



Master Head



VIP Stateroom



VIP Stateroom



VIP Stateroom



VIP Head



VIP Head



VIP Head



Cockpit



Cockpit



Cockpit



Cockpit



Cockpit



Cockpit



Helm



Helm



Helm and Controls



Helm and Controls



Engine Hatch



Engine



Engine



Engine



Bow and Sunpad



Bow and Sunpad



Bow



Bow



Bow



Bow Profile



Swim Platform



Starboard Profile



Port Profile



Port Profile



Starboard Profile



Starboard Profile



Transom Profile



Transom Profile



Transom



CONTACTS

Andrey Shestakov, leading yacht broker of the sales department of Shestakov Yacht Sales Inc. Shestakov Yacht Sales Inc., the official representative of the Miami/Fort Lauderdale FL headquarters.

Contact details

Email: andrey@shestakovyachtsales.com

Web: shestakovyachtsales.com/en/

Telephones

USA: +1(954)274-4435

Office hours

Monday – Saturday: **9:00 - 21:00** EDT

Sunday: **closed**

Address



Harbour Towne Marina, 850 NE 3rd St,
STE 213, Dania, FL 33004