

SEMPER FI — BLACKWELL BOATWORKS



Builder: BLACKWELL BOATWORKS

Year Built: 2006

Model: Sport Fisherman

Price: PRICE ON APPLICATION

Location: United States

LOA: 65' 0" (19.81m)

Beam: 18' 5" (5.61m)

Min Draft: 4' 8" (1.42m)

Cruise Speed: 33 Kts. (38 MPH)

Max Speed: 49 Kts. (56 MPH)

Our experienced yacht broker, Andrey Shestakov, will help you choose and buy a yacht that best suits your needs **Semper Fi — BLACKWELL BOATWORKS** from our catalogue. Presently, at Shestakov Yacht Sales Inc., we have a wide variety of yachts available on our sale's list. We also work in close contact with all the big yacht manufacturers from all over the world.

If you would like to buy a yacht **Semper Fi — BLACKWELL BOATWORKS** or would like help answering any questions concerning purchasing, selling or chartering a yacht, please call **+1(954)274-4435**

TABLE OF CONTENTS

TABLE OF CONTENTS	2
SPECIFICATIONS	5
Basic Information	5
Dimensions	5
Speed, Capacities and Weight	5
Accommodations	5
Hull and Deck Information	5
Engine Information	6
DETAILED INFORMATION	7
ACCOMODATIONS	7
Hull and Deck	7
Engine Room	7
Performance	8
Flybridge Helm	8
Electronics	8
Flybridge	8
COCKPIT	9
BRIDGE HARDTOP	9
Tower	9
LAZZARETTE	9
FORWARD COMPANION WAY	10
FORWARD BILDGE	10
BOW VIP STATEROOM	10
Guest Head	10
PORT AFT MASTER STATEROOM	10
PORT MASTER HEAD	10
STARBOARD 3rd STATEROOM	10
Exclusions	11

Disclaimer	11
PHOTOS	12
Main Salon	12
Dinette	12
Main Salon	12
Pop-Up TV	12
Galley	13
New Sub Zero's & Wine Cooler	13
Galley	13
Liquor Locker	13
Master Stateroom	13
Master TV and Bose System	13
Master Head with New Granite, Sink and Faucet	14
New Granite Shower	14
Companion Way	14
Washer/Dryer	14
New Bausch American Tower 2013	15
VIP Stateroom	15
VIP under bunk reel storage	15
Reel Storage	15
VIP 2	15
Crew Stateroom	15
Crew Stateroom	16
Crew TV with Bose System	16
Guest Head	16
Cockpit	16
Mezzanine Seating	16
Large Cockpit	16
Cockpit	17

Cockpit	17
Flybridge Seating and Table	17
Helm and Electronics	17
Electronics	17
Helm Seating	17
Starboard View	18
Bow Knuckle	18
Port side	18
Port Side	18
Port Side	18
Caterpillar Generators	18
Spot Zero	19
Engine Room	19
CONTACTS	20
Contact details	20
Telephones	20
Office hours	20
Address	20

SPECIFICATIONS

Basic Information

Category: Sport Fisherman

Sub Category: Convertible

Model Year: 2006

Year Built: 2006

Country: United States

Dimensions

LOA: 65' 0" (19.81m)

Beam: 18' 5" (5.61m)

Min Draft: 4' 8" (1.42m)

Speed, Capacities and Weight

Cruise Speed: 33 Kts. (38 MPH)

Cruise Speed RPM: 1800 Kts.

Max Speed: 49 Kts. (56 MPH)

Max Speed RPM: 2400 Kts.

Displacement: 87000 Pounds

Water Capacity: 250 Gallons

Fuel Capacity: 6534 Gallons

Accommodations

Total Cabins: 3

Total Berths: 6

Total Heads: 2

Hull and Deck Information

Hull Material: Fiberglass

Engine Information

Manufacturer: Caterpillar

Model: C-32 Acert

Engine Type: Inboard

Fuel Type: Diesel

DETAILED INFORMATION

ACCOMODATIONS

Entering the salon from aft through a push button controlled salon door, The seating is aft to port and galley is forward to port. The Dinette is located starboard forward. There is a pop-up 42' Television (New 2012) to Starboard. The counters are a beautiful granite done in 2012. The Sub Zero under counter refrigerators and the wine cooler were NEW in 2012 as well. Continuing forward down the companion way, the master stateroom is to port. It has a queen berth, NEW TV and NEW Bose System. It also has an ensuite head with NEW granite shower, NEW head, sink, and faucet (2012). To starboard in the companionway is the guest head, It also was redone with new granite shower, NEW toilet and sink(2012). Continuing forward in the companionway is the VIP with a centerline queen berth and two single berths, up to port, and to starboard. Underneath the queen berth is unique storage for rod butts and reels which is raised and lowered by an electric actuator. (See photos).

Hull and Deck

Mezzanine seating in the cockpit with air conditioning, refrigerated box, freezer, iced drink box, storage, teak covering boards, teak deck and BBQ.

Stainless steel rudders

Veem 5 Blade Props coupled to 3" aquamet shafts Teak Toe Rail Teak Cockpit Teak Covering Boards Bennett Trim Tabs Max Power Bow Thruster Release Admiral Helm Chair Release Cocktail Table Transom Kill Box is Insulated and Plumbed for Live Well FCI Water Maker, 1000 GPD Anchor Locker Non-Skid Bow Deck Hand Rails (4) Underwater Lights New 2012 Bomar Hatches Release Double Bridge Chair Ice Machine Dump in the Top Box Eskimo Ice Chipper, 600PPD Electric Chef Grill BBQ in the Cockpit

Pop-up cleats on foredeck

Engine Room

Twin Caterpillar C-32 Acerts, 1800 Horsepower, with CAT Extended Warrenty

Dual Racor fuel filters to each engine Racor fuel filter to generator Caterpillar engine gauge cluster, port and starboard Hydraulic steering reservoir with pressure gauge Group 34 Optima batteries, four port and four starboard Six battery selector switches: Port and starboard engine

Port and starboard generator 12-volt ships service 24-volt ships service Two air conditioning raw water circulating pumps Two Reverso oil change pumps A.C. and D.C. fluorescent lighting Two electric/automatic bilge pumps Approximately 35-lb Fireboy FE241 cylinder, no tag 19-kw Caterpillar generator, port and starboard forward, Charles 24-volt battery charger Headhunter Sting Ray saltwater pressure pump Headhunter Mach 5 freshwater pressure pump Watermaker low pressure pump Sump tank with pump under each generator 24-volt fuel transfer pump below the port generator Cruisair cockpit freezer compressor unit with digital thermostat

Spot Zero Shipboard water filtration System

Air Conditioned Engine Room

Performance

RPM	Knots	Fuel Per Engine 1600	
28	49 1800	33	61
2000	37	69 2345	
44	94		

Flybridge Helm

Teak helm pod Stainless steel wheel Single lever Glendinning electronic engine controls Caterpillar digital displays ACR searchlight control Five bilge pump indicator lights Generator indicator lights Ritchie compass Robertson AP26 autopilot Two ICOM IC-M602 VHF radios Furuno FCV1200L color video sounder Raymarine M1500 monitor Furuno NavNet unit Raymarine E120 unit Furuno RD-30 unit FLIR Mariner camera control FCI watermaker control panel Three fuel tank gauges and transfer pump control

Electronics

Raymarine E-120 (2) ICOM IC-M602 (1) Furuno NavNet Plotter 14" Screen FLIR Night Vision Furuno FCV 1200 Sounder Raymarine M 1500 Monitor

Simrad Auto Pilot AP-26 Large ACR Spotlight Ritchie 10" Compass Cameras Located in the Engine Room and Cockpit

Flybridge

Fiberglass hardtop with recessed lights (Tri-color LED) L-Shape seating, port forward with storage Straight benchseat, starboard with storage Custom helm and companion chairs Two Miya Epoch electronic teaser reels, overhead Seven rod holders on aft rail

Brow locker with: Assorted life jackets Electric/hydraulic pack to outriggers Two GPS antennas Sirius satellite antenna Autopilot compass Freshwater washdown

COCKPIT

LARGE COCKPIT

Teak over fiberglass deck Teak gunwale covering boards Recessed gunwale rod holders Transom baitwell Port and starboard stern cleat Release pedestal-mounted custom fighting chair with 4-place “rocket launcher” rod holder 50 amp Cablemaster, port and starboard Custom cabinets, starboard forward, with deepwell freezer; engine room entranceway Freshwater washdown, port Seawater washdown, starboard Freshwater fill, port Transom door, starboard Two recessed lights in overhang Dockside phone/television inlet, starboard Mezzanine deck with: Electric barbecue grill Freezer Engine room entry Stainless steel box with Eskimo ice dump

BRIDGE HARDTOP

LARGE ACR searchlight Radar scanner FLIR camera Two aft and one forward facing spreader lights in underside of tower deck

8 Man Canister Life Raft in auto release bracket

Tower

Bausch American anodized polished finished aluminum tower New in 2012 Composite Fiberglass Buggy top with HiDef Sat TV Dome on top VHF antennas, port and starboard Fiberglass helm console with: Stainless steel steering wheel Glendinning electronic engine controls Raymarine E80 unit Engine start/stop switches

Tri-color LED lights in hardtop, platform, and Buggy Top.

Fresh water in tower

LAZZARETTE

864-gallon aluminum fuel tank, port and starboard Trim tab reservoir and control unit Three hydraulic steering actuators Two electric/automatic bilge pumps Autopilot feedback sensor Fluorescent hold light Highwater alarm switch Eskimo ice chipper, port FCI Aquamiser watermaker, starboard

FORWARD COMPANION WAY

Teak and holly sole Vinyl overhead with recessed lights Teak and holly steps with two Charles Iso-Boost 50 shore power transformers General Electric laundry center, starboard

FORWARD BILDGE

Two LectraSan units Two head overboard discharge seacocks Highwater alarm switch Max Power bow thruster Two electric/automatic bilge pumps

BOW VIP STATEROOM

Single berths, port and starboard Double berth, centerline Port and starboard lockers Hanging lockers Four Group 34 Optima batteries to bow thruster below berth Charles 24-volt battery charger Rod storage below berth

Guest Head

Teak and Holly sole Vanity with NEW Ganite countertop, NEW sink, NEW single lever faucet Medicine locker Raritan head NEW Granite stall shower, glass door, NEW wall mounted shower head, NEW single lever faucet

PORT AFT MASTER STATEROOM

Vinyl overhead with recessed lights Double berth with electric platform Hanging locker Two 12-gallon Raritan electric water heaters under berth

Carpeted Sole

New TV and Bose System

New Temperpedic Mattress

PORT MASTER HEAD

Teak and Holly sole Vanity with NEW Granite countertop, NEW sink, NEW single lever faucet Medicine locker Raritan head NEW Granite stall shower, glass door, NEW Overhead mounted shower head, NEW single lever faucet

STARBOARD 3rd STATEROOM

Carpeted sole Vinyl overhead with recessed lights Upper single and lower single berths Hanging locker New television and Bose System

Exclusions

Owner's personal belongings.

Disclaimer

The Company offers the details of this vessel or yacht in good faith but cannot guarantee or warrant the accuracy of this information nor warrant the condition of the vessel. A buyer should instruct his representatives, agents, or his surveyors, to investigate such details as the buyer desires validated. This vessel or yacht is offered subject to prior sale, price change, or withdrawal without notice.

PHOTOS



Main Salon



Dinette



Main Salon



Pop-Up TV



Galley



New Sub Zero's & Wine Cooler



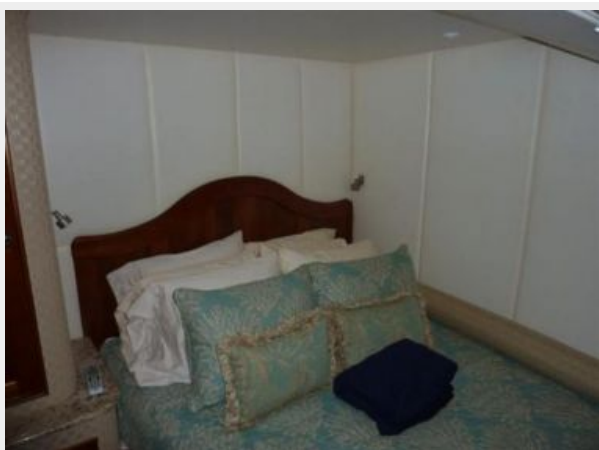
Galley



Liquor Locker



Master Stateroom



Master TV and Bose System



Master Head with New Granite, Sink and Faucet



New Granite Shower



Companion Way



Washer/Dryer



New Bausch American Tower 2013



VIP Stateroom



VIP under bunk reel storage



Reel Storage



VIP 2



Crew Stateroom



Crew Stateroom



Crew TV with Bose System



Guest Head



Cockpit



Mezzanine Seating



Large Cockpit



Cockpit



Cockpit



Flybridge Seating and Table



Helm and Electronics



Electronics



Helm Seating



Starboard View



Bow Knuckle



Port side



Port Side



Port Side



Caterpillar Generators



Spot Zero



Engine Room



CONTACTS

Andrey Shestakov, leading yacht broker of the sales department of Shestakov Yacht Sales Inc. Shestakov Yacht Sales Inc., the official representative of the Miami/Fort Lauderdale FL headquarters.

Contact details

Email: andrey@shestakovyachtsales.com

Web: shestakovyachtsales.com/en/

Telephones

USA: +1(954)274-4435

Office hours

Monday – Saturday: **9:00 - 21:00** EDT

Sunday: **closed**

Address



Harbour Towne Marina, 850 NE 3rd St,
STE 213, Dania, FL 33004