

SEMPER FI — BLACKWELL BOATWORKS



Судостроитель:

BLACKWELL BOATWORKS

Год постройки: 2006

Модель: Катер для спортивной рыбалки

Цена: **ЦЕНА ЯХТЫ ПО ЗАПРОСУ**

Местонахождение: United States

Длина общая: 65' 0" (19.81m)

Ширина: 18' 5" (5.61m)

Мин. осадка: 4' 8" (1.42m)

Крейс. скорость: 33 Kts. (38 MPH)

Макс. скорость: 49 Kts. (56 MPH)

Купить **Semper Fi — BLACKWELL BOATWORKS** а также выбрать подходящую вам яхту из нашего каталога яхт вам поможет опытный яхтенный брокер Андрей Шестаков. На сегодняшний день компания **Shestakov Yacht Sales Inc.** имеет большое количество яхт в собственном списке продаж, а также тесно сотрудничает со всеми крупными яхтенными производителями по всему миру. Для того чтобы купить яхту **Semper Fi — BLACKWELL BOATWORKS** а также проконсультироваться по любому вопросу связанному с покупкой, продажей, чартером яхт позвоните по телефону **+7(918)465-66-44**.

ОГЛАВЛЕНИЕ

ОГЛАВЛЕНИЕ	2
ХАРАКТЕРИСТИКИ	5
Основная информация	5
Размеры	5
Скорость, вместимость и масса	5
Размещение	5
Корпус и палуба	5
Информация о двигателе	6
ПОДРОБНОЕ ОПИСАНИЕ	7
ACCOMODATIONS	7
Hull and Deck	7
Engine Room	7
Performance	8
Flybridge Helm	8
Electronics	8
Flybridge	8
COCKPIT	9
BRIDGE HARDTOP	9
Tower	9
LAZZARETTE	9
FORWARD COMPANION WAY	10
FORWARD BILDGE	10
BOW VIP STATEROOM	10
Guest Head	10
PORT AFT MASTER STATEROOM	10
PORT MASTER HEAD	10
STARBOARD 3rd STATEROOM	10
Исключения	11

Отказ от ответственности	11
ФОТОГРАФИИ	12
Main Salon	12
Dinette	12
Main Salon	12
Pop-Up TV	12
Galley	13
New Sub Zero's & Wine Cooler	13
Galley	13
Liquor Locker	13
Master Stateroom	13
Master TV and Bose System	13
Master Head with New Granite, Sink and Faucet	14
New Granite Shower	14
Companion Way	14
Washer/Dryer	14
New Bausch American Tower 2013	15
VIP Stateroom	15
VIP under bunk reel storage	15
Reel Storage	15
VIP 2	15
Crew Stateroom	15
Crew Stateroom	16
Crew TV with Bose System	16
Guest Head	16
Cockpit	16
Mezzanine Seating	16
Large Cockpit	16
Cockpit	17

Cockpit	17
Flybridge Seating and Table	17
Helm and Electronics	17
Electronics	17
Helm Seating	17
Starboard View	18
Bow Knuckle	18
Port side	18
Port Side	18
Port Side	18
Caterpillar Generators	18
Spot Zero	19
Engine Room	19
КОНТАКТЫ	20
Контактная информация	20
Телефоны	20
Время работы	20
Адрес	20

ХАРАКТЕРИСТИКИ

Основная информация

Тип судна: Катер для спортивной рыбалки

Подкатегория: Convertible

Модельный год: 2006

Год постройки: 2006

Страна: United States

Размеры

Длина общая: 65' 0" (19.81m)

Ширина: 18' 5" (5.61m)

Мин. осадка: 4' 8" (1.42m)

Скорость, вместимость и масса

Крейс. скорость: 33 Kts. (38 MPH)

Крейсерская скорость поворота: 1800 Kts.

Макс. скорость: 49 Kts. (56 MPH)

Макс. скорость поворота: 2400 Kts.

Водоизмещение: 87000 Pounds

Вместимость воды: 250 Gallons

Объем топливного бака: 6534 Gallons

Размещение

Всего кают: 3

Всего коек: 6

Всего ком. состава: 2

Корпус и палуба

Материал корпуса: Fiberglass

Информация о двигателе

Производитель: Caterpillar

Модель: C-32 Acert

Тип двигателя: Inboard

Тип топлива: Diesel

ПОДРОБНОЕ ОПИСАНИЕ

ACCOMODATIONS

Entering the salon from aft through a push button controlled salon door, The seating is aft to port and galley is forward to port. The Dinette is located starboard forward. There is a pop-up 42' Television (New 2012) to Starboard. The counters are a beautiful granite done in 2012. The Sub Zero under counter refrigerators and the wine cooler were NEW in 2012 as well. Continuing forward down the companion way, the master stateroom is to port. It has a queen berth, NEW TV and NEW Bose System. It also has an ensuite head with NEW granite shower, NEW head, sink, and faucet (2012). To starboard in the companionway is the guest head, It also was redone with new granite shower, NEW toilet and sink(2012). Continuing forward in the companionway is the VIP with a centerline queen berth and two single berths, up to port, and to starboard. Underneath the queen berth is unique storage for rod butts and reels which is raised and lowered by an electric actuator. (See photos).

Hull and Deck

Mezzanine seating in the cockpit with air conditioning, refrigerated box, freezer, iced drink box, storage, teak covering boards, teak deck and BBQ.

Stainless steel rudders

Veem 5 Blade Props coupled to 3" aquamet shafts Teak Toe Rail Teak Cockpit Teak Covering Boards Bennett Trim Tabs Max Power Bow Thruster Release Admiral Helm Chair Release Cocktail Table Transom Kill Box is Insulated and Plumbed for Live Well FCI Water Maker, 1000 GPD Anchor Locker Non-Skid Bow Deck Hand Rails (4) Underwater Lights New 2012 Bomar Hatches Release Double Bridge Chair Ice Machine Dump in the Top Box Eskimo Ice Chipper, 600PPD Electric Chef Grill BBQ in the Cockpit

Pop-up cleats on foredeck

Engine Room

Twin Caterpillar C-32 Acerts, 1800 Horsepower, with CAT Extended Warrenty

Dual Racor fuel filters to each engine Racor fuel filter to generator Caterpillar engine gauge cluster, port and starboard Hydraulic steering reservoir with pressure gauge Group 34 Optima batteries, four port and four starboard Six battery selector switches: Port and starboard engine

Port and starboard generator 12-volt ships service 24-volt ships service Two air conditioning raw water circulating pumps Two Reverso oil change pumps A.C. and D.C. fluorescent lighting Two electric/automatic bilge pumps Approximately 35-lb Fireboy FE241 cylinder, no tag 19-kw Caterpillar generator, port and starboard forward, Charles 24-volt battery charger Headhunter Sting Ray saltwater pressure pump Headhunter Mach 5 freshwater pressure pump Watermaker low pressure pump Sump tank with pump under each generator 24-volt fuel transfer pump below the port generator Cruisair cockpit freezer compressor unit with digital thermostat

Spot Zero Shipboard water filtration System

Air Conditioned Engine Room

Performance

RPM	Knots	Fuel Per Engine 1600	
28	49 1800	33	61
2000	37	69 2345	
44	94		

Flybridge Helm

Teak helm pod Stainless steel wheel Single lever Glendinning electronic engine controls Caterpillar digital displays ACR searchlight control Five bilge pump indicator lights Generator indicator lights Ritchie compass Robertson AP26 autopilot Two ICOM IC-M602 VHF radios Furuno FCV1200L color video sounder Raymarine M1500 monitor Furuno NavNet unit Raymarine E120 unit Furuno RD-30 unit FLIR Mariner camera control FCI watermaker control panel Three fuel tank gauges and transfer pump control

Electronics

Raymarine E-120 (2) ICOM IC-M602 (1) Furuno NavNet Plotter 14" Screen FLIR Night Vision Furuno FCV 1200 Sounder Raymarine M 1500 Monitor

Simrad Auto Pilot AP-26 Large ACR Spotlight Ritchie 10" Compass Cameras Located in the Engine Room and Cockpit

Flybridge

Fiberglass hardtop with recessed lights (Tri-color LED) L-Shape seating, port forward with storage Straight benchseat, starboard with storage Custom helm and companion chairs Two Miya Epoch electronic teaser reels, overhead Seven rod holders on aft rail

Brow locker with: Assorted life jackets Electric/hydraulic pack to outriggers Two GPS antennas Sirius satellite antenna Autopilot compass Freshwater washdown

COCKPIT

LARGE COCKPIT

Teak over fiberglass deck Teak gunwale covering boards Recessed gunwale rod holders Transom baitwell Port and starboard stern cleat Release pedestal-mounted custom fighting chair with 4-place “rocket launcher” rod holder 50 amp Cablemaster, port and starboard Custom cabinets, starboard forward, with deepwell freezer; engine room entranceway Freshwater washdown, port Seawater washdown, starboard Freshwater fill, port Transom door, starboard Two recessed lights in overhang Dockside phone/television inlet, starboard Mezzanine deck with: Electric barbecue grill Freezer Engine room entry Stainless steel box with Eskimo ice dump

BRIDGE HARDTOP

LARGE ACR searchlight Radar scanner FLIR camera Two aft and one forward facing spreader lights in underside of tower deck

8 Man Canister Life Raft in auto release bracket

Tower

Bausch American anodized polished finished aluminum tower New in 2012 Composite Fiberglass Buggy top with HiDef Sat TV Dome on top VHF antennas, port and starboard Fiberglass helm console with: Stainless steel steering wheel Glendinning electronic engine controls Raymarine E80 unit Engine start/stop switches

Tri-color LED lights in hardtop, platform, and Buggy Top.

Fresh water in tower

LAZZARETTE

864-gallon aluminum fuel tank, port and starboard Trim tab reservoir and control unit Three hydraulic steering actuators Two electric/automatic bilge pumps Autopilot feedback sensor Fluorescent hold light Highwater alarm switch Eskimo ice chipper, port FCI Aquamiser watermaker, starboard

FORWARD COMPANION WAY

Teak and holly sole Vinyl overhead with recessed lights Teak and holly steps with two Charles Iso-Boost 50 shore power transformers General Electric laundry center, starboard

FORWARD BILDGE

Two LectraSan units Two head overboard discharge seacocks Highwater alarm switch Max Power bow thruster Two electric/automatic bilge pumps

BOW VIP STATEROOM

Single berths, port and starboard Double berth, centerline Port and starboard lockers Hanging lockers Four Group 34 Optima batteries to bow thruster below berth Charles 24-volt battery charger Rod storage below berth

Guest Head

Teak and Holly sole Vanity with NEW Ganite countertop, NEW sink, NEW single lever faucet Medicine locker Raritan head NEW Granite stall shower, glass door, NEW wall mounted shower head, NEW single lever faucet

PORT AFT MASTER STATEROOM

Vinyl overhead with recessed lights Double berth with electric platform Hanging locker Two 12-gallon Raritan electric water heaters under berth

Carpeted Sole

New TV and Bose System

New Temperpedic Mattress

PORT MASTER HEAD

Teak and Holly sole Vanity with NEW Granite countertop, NEW sink, NEW single lever faucet Medicine locker Raritan head NEW Granite stall shower, glass door, NEW Overhead mounted shower head, NEW single lever faucet

STARBOARD 3rd STATEROOM

Carpeted sole Vinyl overhead with recessed lights Upper single and lower single berths Hanging locker New television and Bose System

Исключения

При продаже яхты исключаются личные вещи владельца.

Отказ от ответственности

Компания предоставляет описание судна или яхты добросовестно, но не может гарантировать точность этой информации, а также не ручается за техническое состояние. Покупатель должен проинструктировать своих агентов или оценщиков исследовать представленную информацию более подробно, по собственному желанию. Продажа судна или яхты, изменение цены или снятие с продажи будет происходить без предварительного уведомления.

ФОТОГРАФИИ



Main Salon



Dinette



Main Salon



Pop-Up TV



Galley



New Sub Zero's & Wine Cooler



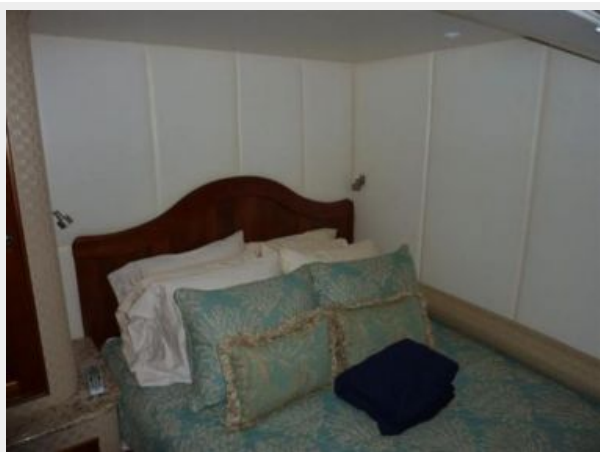
Galley



Liquor Locker



Master Stateroom



Master TV and Bose System



Master Head with New Granite, Sink and Faucet



New Granite Shower



Companion Way



Washer/Dryer



New Bausch American Tower 2013



VIP Stateroom



VIP under bunk reel storage



Reel Storage



VIP 2



Crew Stateroom



Crew Stateroom



Crew TV with Bose System



Guest Head



Cockpit



Mezzanine Seating



Large Cockpit



Cockpit



Cockpit



Flybridge Seating and Table



Helm and Electronics



Electronics



Helm Seating



Starboard View



Bow Knuckle



Port side



Port Side



Port Side



Caterpillar Generators



Spot Zero



Engine Room



КОНТАКТЫ

Андрей Шестаков (Andrey Shestakov) – ведущий яхтенный брокер отдела продаж яхт и судов компании Shestakov Yacht Sales Inc. Официальный представитель Shestakov Yacht Sales Inc. для русскоговорящих клиентов в центральном офисе компании в Майами/Форт Лодердейл/Флорида/США.

Контактная информация

Email: andrey@shestakovyachtsales.com

Web: shestakovyachtsales.com

Телефоны

Краснодарский край: **+7(918)465-66-44**

США, Майами, Флорида: **+1(954)274-4435**

Время работы

Понедельник – Суббота: **9:00 - 21:00**
EDT

Воскресенье: **Закрето**

Адрес



Harbour Towne Marina, 850 NE 3rd St,
STE 213, Dania, FL 33004