

## PRESTIGE 550 FLY — PRESTIGE



**Builder:** PRESTIGE

**Year Built:** 2014

**Model:** Motor Yacht

**Price:** PRICE ON APPLICATION

**Location:** United States

**LOA:** 58' 8" (17.88m)

**Beam:** 15' 7" (4.75m)

**Cruise Speed:** 18 Kts. (21 MPH)

**Max Speed:** 31 Kts. (36 MPH)

Our experienced yacht broker, Andrey Shestakov, will help you choose and buy a yacht that best suits your needs **Prestige 550 Fly — PRESTIGE** from our catalogue. Presently, at Shestakov Yacht Sales Inc., we have a wide variety of yachts available on our sale's list. We also work in close contact with all the big yacht manufacturers from all over the world.

If you would like to buy a yacht **Prestige 550 Fly — PRESTIGE** or would like help answering any questions concerning purchasing, selling or chartering a yacht, please call **+1(954)274-4435**

---

# TABLE OF CONTENTS

---

TABLE OF CONTENTS	2
SPECIFICATIONS	3
Basic Information	3
Dimensions	3
Speed, Capacities and Weight	3
Accommodations	4
Hull and Deck Information	4
Engine Information	4
PHOTOS	5
CONTACTS	7
Contact details	7
Telephones	7
Office hours	7
Address	7

---

# SPECIFICATIONS

---

## Basic Information

---

**Category:** Motor Yacht

**Sub Category:** Flybridge with Euro Transom

**Model Year:** 2014

**Year Built:** 2014

**Country:** United States

**Vessel Top:** Bimini Top

**Fly Bridge:** Yes

**Cockpit:** Yes

## Dimensions

---

**LOA:** 58' 8" (17.88m)

**Beam:** 15' 7" (4.75m)

**Clearance:** 19' 4" (5.89m)

## Speed, Capacities and Weight

---

**Cruise Speed:** 18 Kts. (21 MPH)

**Cruise Speed RPM:** 2500 Kts.

**Cruise Speed Range:** 260

**Max Speed:** 31 Kts. (36 MPH)

**Max Speed RPM:** 3030 Kts.

**Max Speed Range:** 275 Kts.

**Displacement:** 38470 Pounds

**Water Capacity:** 211 Gallons

**Holding Tank:** 32 Gallons

**Fuel Capacity:** 581 Gallons

---

## Accommodations

---

**Total Cabins:** 3

**Total Berths:** 6

**Sleeps:** 6

**Total Heads:** 2

**Captain Cabin:** True

**Crew Cabin:** 1

**Crew Berths:** 2

**Crew Sleeps:** 2

**Crew Heads:** 1

---

## Hull and Deck Information

---

**Hull Material:** Composite Fiberglass

**Hull Designer:** Michael Peders

**Exterior Designer:** Garroni Design

---

## Engine Information

---

**Engines:** 2

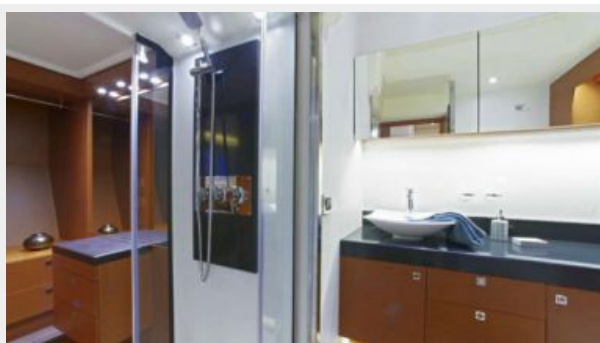
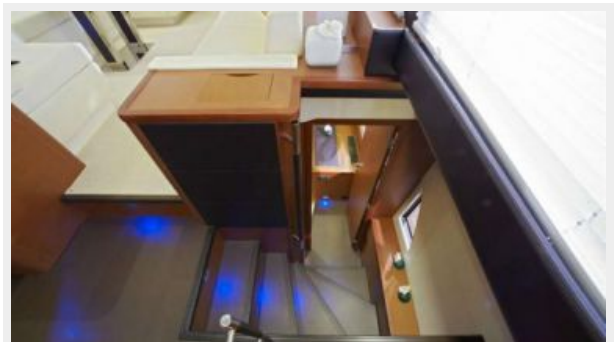
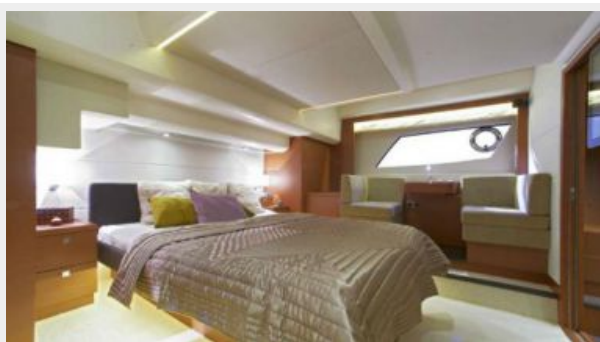
**Manufacturer:** Volvo Penta

**Model:** 600 IPS

**Engine Type:** Other

**Fuel Type:** Diesel

# PHOTOS





---

# CONTACTS

---

Andrey Shestakov, leading yacht broker of the sales department of Shestakov Yacht Sales Inc. Shestakov Yacht Sales Inc., the official representative of the Miami/Fort Lauderdale FL headquarters.

---

## Contact details

---

Email: [andrey@shestakovyachtsales.com](mailto:andrey@shestakovyachtsales.com)

Web: [shestakovyachtsales.com/en/](http://shestakovyachtsales.com/en/)

---

## Telephones

---

USA: +1(954)274-4435

---

## Office hours

---

Monday – Saturday: **9:00 - 21:00** EDT

Sunday: **closed**

---

## Address

---



Harbour Towne Marina, 850 NE 3rd St,  
STE 213, Dania, FL 33004