

YELLOW TURTLE — FERRETTI



Builder: FERRETTI

Year Built: 2010

Model: Motor Yacht

Price: PRICE ON APPLICATION

Location: Italy

LOA: 86' 0" (26.22m)

Beam: 22' 9" (6.93m)

Max Draft: 10' 3" (3.12m)

Cruise Speed: 13 Kts. (15 MPH)

Max Speed: 16 Kts. (18 MPH)

Our experienced yacht broker, Andrey Shestakov, will help you choose and buy a yacht that best suits your needs **YELLOW TURTLE — FERRETTI** from our catalogue. Presently, at Shestakov Yacht Sales Inc., we have a wide variety of yachts available on our sale's list. We also work in close contact with all the big yacht manufacturers from all over the world.

If you would like to buy a yacht **YELLOW TURTLE — FERRETTI** or would like help answering any questions concerning purchasing, selling or chartering a yacht, please call **+1(954)274-4435**

TABLE OF CONTENTS

TABLE OF CONTENTS	2
SPECIFICATIONS	3
Overview	3
Basic Information	3
Dimensions	3
Speed, Capacities and Weight	3
Accommodations	3
Hull and Deck Information	4
Engine Information	4
DETAILED INFORMATION	5
COMMENTS	5
EQUIPMENT	5
Exclusions	6
Disclaimer	6
PHOTOS	7
CONTACTS	11
Contact details	11
Telephones	11
Office hours	11
Address	11

SPECIFICATIONS

Overview

VAT PAID

Luxury motor yacht YELLOW TURTEL is a Custom Line Ferretti Navetta 26 built in 2010. The yacht measures 26,22m (86') and is great for larger family groups or friends as she can accommodate up to 9 guests in 4 cabins.

Basic Information

Category: Motor Yacht

Model Year: 2010

Year Built: 2010

Country: Italy

Fly Bridge: Yes

Dimensions

LOA: 86' 0" (26.22m)

Beam: 22' 9" (6.93m)

Max Draft: 10' 3" (3.12m)

Speed, Capacities and Weight

Cruise Speed: 13 Kts. (15 MPH)

Cruise Speed Range: 760

Max Speed: 16 Kts. (18 MPH)

Gross Tonnage: 99 Pounds

Water Capacity: 528.344104 Gallons

Fuel Capacity: 3275.7334448 Gallons

Accommodations

Total Cabins: 5

Sleeps: 10

Hull and Deck Information

Hull Material: GRP

Engine Information

Engines: 2

Manufacturer: MAN

Model: V10 CR

DETAILED INFORMATION

COMMENTS

- European VAT paid

EQUIPMENT

EXTRA ACCESSORIES

Main equipment: Air conditioning – tropical (salon + cabins + 2 crew) Generator Köhler 28000W diff. from 20000 W auxiliary 2x35 Kw Stern thruster 40HP hydraulic (double propeller) Davit with gross loading 800kg diff. from std 600kg Control station in the cockpit with fixed cover

Watermaker Idromar 260 l/h diff. from 130 l/h (duplex) 2x150 l/h Light Underwater Xenon – each (2 at stern, 2 per side at stern) (6) Fuel filter Alfa Laval Treatment system for black water Hamann

Interior and decks: Pullman bed in the guest cabin at bow (2) Bed queen size separable in portside vip cabin at stern – diff.

Curtains: electrical raising for main deck Curtains: electrical raising for master cabin Dimmer light upper deck Dimmer light main deck Dimmer light in the cockpit Illumination spot lights LED for all the boat Walk around in teak at bow of the helm position – diff. from std Wooden floor in “whitened oak” for the main deck – diff. (part from bathrooms) wooden floor in “whitened oak” in main deck bathrooms – diff. from std UD armchair cushion upholstered with fabric “Roda Mole Dew Collection” – diff. from std (6) Additional chaise longue “Royal Botania Alu 195 TWU” on the Upper Deck Pilot house sofa upholstered with leather “Diama 07 Kaki” – diff. from std Galley top in “Quarzite Quarella col. Cinnamon” – diff. from std Lighting rod for master bedhead Col. 06 Sand and padded leather in leather Diama TV support in master cabin, in leather Diama Kaki 07 – diff. from std Armchair mod. Poliform Grace upholstered with leather Diama Kaki 07 – diff. from std (in master cabin) (2) Bedhead + cupboard doors + TV support in leather Diama 1029 Elefant – diff. from std (in both vip cabins in stern) (2) Bedhead + TV support in leather Diama 1029 Elefant diff. from std (in both guest cabins in bow) (2) Washbasin top in marble “Silk Georgette Dark” – diff. from std (in master bathroom) Master shower walls in marble “Silk Georgette Dark” Master shower floor in marble “Silk Georgette Dark” – diff. from std LED shower ceiling - diff. from std (in master shower) Washbasin top in marble “Silk Georgette Light” – diff. from std (in both vip bathrooms) (2) Washbasin top in marble “Silk Georgette Light” – diff. from std (in both guest bathrooms) (2) Washbasin top in marble “Silk Georgette Dark” – diff. from std (in dayhead) Philosophy Sophia Beige Skins Gros Grain Comb Benetti Philosophy Sophia Beige Skins Gros Grain Handles Olivari mod. Planet upholstered with leather By Cast seamed Alfa 2197 WO – diff. from std with high and low stripes of structure in Elm Moquette Riga Jab Natura 2 for all the lower deck (cabins + lobby) – diff. from std Curtains: electrical raising for lower deck cabins (4) Venetian curtains in saloon in white wood – diff. from pilot house Small table upholstered in leather Diama Yamai col 1007 Kaki (like the small sofa) UD cockpit armchair “Dedon Barcelona col. 083 chalk” – diff. from std (6) Aft saloon curtain “Laiva Casa art 1360 Var

1" (electric) – diff. from std **Navigation and communication equipment:** TVCC: thermal night vision Flir Pan/Tilt Dual professional M626 TVCC: additional control unit for thermal night vision Flir Pan/Tilt Dual professional M626 (in galley) Monitor VGA/VideoIn for Navnet B.B and TVCC 17" glass (in pilot house) (2) Credit for not supplying std monitor VGA 15" glass (in pilot house) (2) Gi8: additional touchscreen monitor 15" (in galley) TVCC: external color camera additional (in the cockpit at stern) Monitor VGA/VideoIn for Navnet B.B and TVCC 15" glass (in pilot house) Move the TVCC monitor 10" from the pilot house to the galley Navnet 3D Black Box Control Antenna TV SAT: socket for decoder – each (in galley, master cabin, 4 lower deck cabins, UD saloon) Antenna TV SAT Navisystem 85 NT with std receiver in saloon Antenna empty dome for NT 85 for symmetry on roll bar Indicator speed and wind direction FI50 **Galley:** Oven 90x90 in galley – diff. Cooking top Bosch 80 cm in galley – diff. Wine cooler **A/V:** TV 46" LCD LED thin (in saloon) TV: electric raising device for TV 46" (in saloon) Credit for not supplying TV 32" std in saloon TV 32" LCD built-in flat additional (3) (in master cabin and vip cabins at stern) Credit for not supplying TV 26" std in master cabin TV 20" LCD built-in flat additional (in galley) TV 21,5" Built-in in both guest cabins at bow (2) Loudspeakers "Apart" white color – diff. from std (in lower deck cabins) (4) **Tenders and toys:** Jet ski 2 seabobs Tender Williams 445 Turbojet

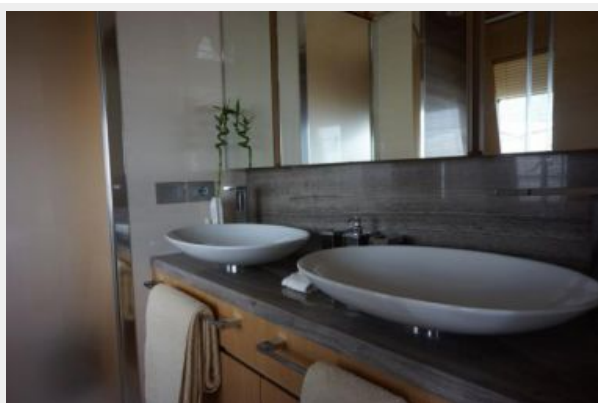
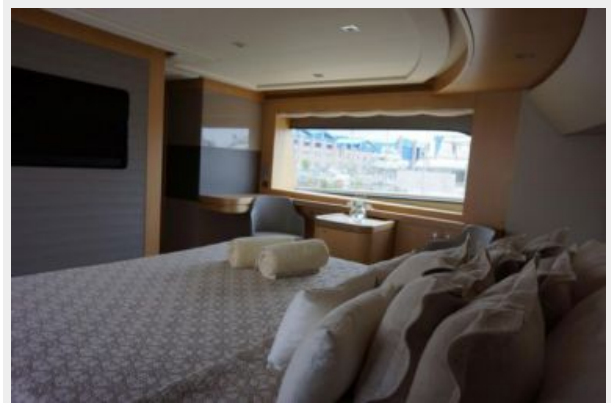
Exclusions

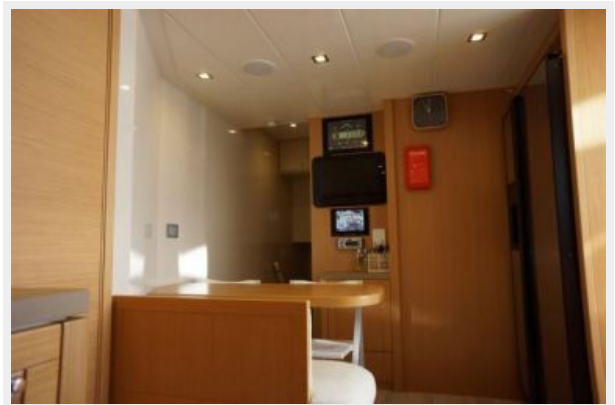
Owner's personal belongings.

Disclaimer

The Company offers the details of this vessel or yacht in good faith but cannot guarantee or warrant the accuracy of this information nor warrant the condition of the vessel. A buyer should instruct his representatives, agents, or his surveyors, to investigate such details as the buyer desires validated. This vessel or yacht is offered subject to prior sale, price change, or withdrawal without notice.

PHOTOS









CONTACTS

Andrey Shestakov, leading yacht broker of the sales department of Shestakov Yacht Sales Inc. Shestakov Yacht Sales Inc., the official representative of the Miami/Fort Lauderdale FL headquarters.

Contact details

Email: andrey@shestakovyachtsales.com

Web: shestakovyachtsales.com/en/

Telephones

USA: +1(954)274-4435

Office hours

Monday – Saturday: **9:00 - 21:00** EDT

Sunday: **closed**

Address



Harbour Towne Marina, 850 NE 3rd St,
STE 213, Dania, FL 33004