

GUINEVERE — GRAND BANKS



Судостроитель: GRAND BANKS

Год постройки: 1985

Модель: Траулер

Цена: ЦЕНА ЯХТЫ ПО ЗАПРОСУ

Местонахождение: United States

Длина общая: 42' 0" (12.80m)

Ширина: 13' 7" (4.14m)

Мин. осадка: 4' 2" (1.27m)

Макс. осадка: 4' 2" (1.27m)

Крейс. скорость: 9 Kts. (10 MPH)

Макс. скорость: 11 Kts. (13 MPH)

Купить **GUINEVERE — GRAND BANKS** а также выбрать подходящую вам яхту из нашего каталога яхт вам поможет опытный яхтенный брокер Андрей Шестаков. На сегодняшний день компания **Shestakov Yacht Sales Inc.** имеет большое количество яхт в собственном списке продаж, а также тесно сотрудничает со всеми крупными яхтенными производителями по всему миру.

Для того чтобы купить яхту **GUINEVERE — GRAND BANKS** а также проконсультироваться по любому вопросу связанному с покупкой, продажей, чартером яхт позвоните по телефону **+7(918)465-66-44**.

ОГЛАВЛЕНИЕ

ОГЛАВЛЕНИЕ	2
ХАРАКТЕРИСТИКИ	4
Обзор	4
Основная информация	4
Размеры	4
Скорость, вместимость и масса	4
Размещение	5
Корпус и палуба	5
Информация о двигателе	5
ПОДРОБНОЕ ОПИСАНИЕ	6
Vessel Walkthrough & Accommodations	6
Salon	6
Galley	6
Master Stateroom	7
Navigation & Electronics Equipment	7
Deck and Hull Equipment	7
Engine and Mechanical	8
Electrical Equipment	9
Исключения	9
Отказ от ответственности	9
ФОТОГРАФИИ	10
Guest/Day Head	10
Guest Stateroom Forward	10
Helm to Starboard	10
Salon Aft	10
Galley Stove and Microwave - Steps to Forward Stateroom	11
Galley to Port	11
Salon to Starboard	11

Salon to Port with Deck Access	11
Electrical Panels	12
Master Stateroom Entrance	12
Master Queen Berth	12
Master Stateroom to Starboard	12
Master Ensuite Head to Port	13
Master Stateroom Shower to Starboard	13
Port Side Deck Forward	13
Bow with Varnished Rails	13
Ground Tackle	14
Starboard Side Deck Aft	14
Trunk Cabin Forward	14
Flybridge with Sunbrella Bimini and Helm Covers	14
Flybridge Helm	15
Flybridge Aft Deck	15
10' Zodiac RIB	15
Trunk Cabin from Flybridge	15
Port View	15
Bow View	15
Undercover Storage	16
Running Gear with Fresh Paint	16
КОНТАКТЫ	17
Контактная информация	17
Телефоны	17
Время работы	17
Адрес	17

ХАРАКТЕРИСТИКИ

Обзор

MAJOR PRICE REDUCTION! "Guinevere" features the preferred ISLAND QUEEN berth in the aft master stateroom. Teak decks are in very nice condition. The transom, door trims, side railings, gunnel rails and eyebrow teak are newly varnished high gloss. This is a great opportunity to own a classic Grand Banks! Seaworthy Classic! Motivated owner--reasonable offers considered!

Easy to see in Stuart, Florida. Just 45 minutes north of the West Palm Beach Airport. Call today for your showing!

Основная информация

Тип судна: Траулер	Модельный год: 1985
Год постройки: 1985	Страна: United States
Верх: Bimini Top	Открытая палуба мостика: Да
Кубрик: Да	

Размеры

Длина общая: 42' 0" (12.80m)	Ширина: 13' 7" (4.14m)
Мин. осадка: 4' 2" (1.27m)	Макс. осадка: 4' 2" (1.27m)
Трапы: 16' 0" (4.88m)	

Скорость, вместимость и масса

Крейс. скорость: 9 Kts. (10 MPH)	Макс. скорость: 11 Kts. (13 MPH)
Водоизмещение: 35000 Pounds	Вместимость воды: 270 Gallons
Вместимость сточного бака: 35 Gallons	Объем топливного бака: 325 Gallons

Размещение

Всего кают: 2

Всего коек: 2

Спальные места: 4

Всего ком. состава: 2

Корпус и палуба

Материал корпуса: Fiberglass

Комплектация корпуса: Semi-Displacement

Информация о двигателе

Двигатели: 2

Производитель: Ford Lehman

Модель: 2725E

Тип двигателя: Inboard

Тип топлива: Diesel

ПОДРОБНОЕ ОПИСАНИЕ

Vessel Walkthrough & Accommodations

Starting from the forward V-berth there is an ensuite head to starboard, sink with vanity and medicine cabinet. Also included is a "wet-head" shower. Plenty of light and fresh air is provided by an overhead hatch and two side windows. There is a cedar lined hanging closet to port with a second smaller locker next to it. Sleeping accommodations are provided by a V-berth with ample drawers and storage below. Moving aft we have a set of stairs that lift up for forward access to the engine room.

Up to the main Salon there is the lower helm station to starboard with a full set of electronics for driving the boat in less than perfect weather. Aft of helm station is a day bar with liquor storage and a U-line ice maker. Along the starboard is a L-shaped settee with a GB teak dining table that can convert from cocktails to dinner for six. There is an entertainment center and bench storage to port, along with a port-side deck door. There is plenty of storage under the settee and in the entertainment center.

On the portside is the full galley including an electric stove and oven. Large single sink, cream Corian counter tops and lot of storage for pots and pans and all of your cooking needs. Forward in the Galley is more teak cabinets. Below is a Norcold refrigerator/freezer. There is a large entertainment center with plenty of storage port. One of the best features of Grand Banks is the large windows in the Salon providing natural light and ventilation. There are cream curtains throughout the Salon/Galley. There is access to the engine room from the main saloon with removable floor panels.

Going down three steps is the Master Stateroom. GUINEVERE features the preferred ISLAND QUEEN berth. There is an ensuite head on the port side with a separate shower on the starboard side. There is a large hanging locker with double doors. Access to the aft deck thru opening door which is great for natural light and ventilation.

Salon

The Salon has the Galley forward to port and lower helm station to starboard. The starboard door is outboard of the lower helm station and leads to the side deck. Aft of the helm station is the bar with ice-maker, glass and bottle storage, then the dining area with L-settee, drop leaf Grand Banks table and L-shaped seating. On the port side, aft of the Galley, is the door to the port decks, followed by a entertainment center with lots of storage and the bench seat. The teak is finished in satin low luster with a tasteful tan fabric on settees.

Galley

Up-Galley style located on the port side of the Salon. There is a large SS sink with Delta Hot/Cold fresh water faucet with Corian cover. There is a Princess 110v electric 3 burner stove with oven just forward of sink. There is a Norcold refrigerator /freezer located under the aft counter. There is a GE microwave forward of the stove down the steps. Lots of storage over and under the countertop.

Master Stateroom

The Master Stateroom has the preferred ISLAND QUEEN with night stands to starboard with the ensuite head to port and separate shower to starboard. Aft is a desk with drawer storage. There is a large hanging locker with double doors. There is access to the aft deck thru an opening door, which is great for natural light and ventilation.

Navigation & Electronics Equipment

LOWER STATION

- Garmin 4212 GPSMap
- Raytheon Raystar 390GPS
- Autohelm 6000 Autopilot
- Icom Command Ram Mic
- Datamarine Wind, Speed, Direction
- Standard depth alarm
- Compass
- Tank Monitor
- Morse cable dual-lever controls
- Grand Banks cable steering
- Teak ships style steering wheel

UPPER STATION

- Garmin 4212 GPSMap
- ICOM M56 VHF
- ACR spotlight control
- Autohelm Autopilot
- Teak ships style steering wheel
- Compass
- Morse cable dual-lever controls

Entertainment Electronics:

- Sony Stereo System
- 30" Panasonic Flat Screen TV in Salon
- 23" Toshiba Flat Screen TV in Guest Stateroom

Deck and Hull Equipment

- Transom, door trims, side railings, gunnel rails and eyebrow teak all newly varnished high

gloss

- Mast and boom system; 12v hinged dinghy launch and retrieval on transom
- Anchor pulpit with double bow roller
- Danforth and Bruce anchors with all-chain rode
- 10' Zodiac
- Avon 6-man life raft (needs recertification)
- Blue bimini flybridge canvas covers helm area and aft bridge area; all on SS collapsible framework; blue bimini and weather covers on bridge railings
- Double back-to-back starboard helm seat in flybridge with storage underneath
- Single back-to-back port seat in flybridge with storage underneath
- Bronze hardware including cleats and hawse pipes
- SS railing stanchions
- 2003 6 hp Nissan 4-stroke outboard engine
- Teak decks in very nice condition
- Sunbrella weather covers on railing in flybridge
- Sunbrella weather cover for flybridge helm
- Large deck box mounted at bow
- Teak swim platform

Engine and Mechanical

- Twin Lehman Super 135hp 6 cylinder diesels, naturally aspirated
- All recommended upgrades to Lehman engines applied
- All hoses on engines replaced
- Perko raw sea water strainers
- Hot water heater 110v and plumbed to engine
- (2) Bilge blowers
- Velvet Drive marine gears
- SS Aquamet shafts, 1.5"
- Racor 900 fuel filters on main engines
- (2) CruiseAir Air Conditioning Units
- Maserator pump and Y-Valves
- Manual head - Aft Master Stateroom
- Manual head - Forward Stateroom
- Port Fuel tank replaced; starboard one refurbished

Please Note: Engine hours shown here are as of the original listing date and are an account of what the Listing Broker was told by the Owner and/or actual reading of the engine hour meters. The Broker cannot guarantee the actual true hours. It is the responsibility of the Buyer and/or his Agent/Surveyor to verify engine hours, as well as, all other representations noted on the Listing Brochure.

Electrical Equipment

- Onan 5KW generator mounted in aft of engine room (1272 hrs)
- Racor filter for genset
- AC panel and circuit breakers
- DC panel and circuit breakers
- NEWMAR Inverter and battery charger
- Starboard engine battery
- Port engine battery
- Generator start battery
- Inverter batteries: (6) deep-cycle golf cart batteries
- Shore power cords and adapters
- (2) 50 amp shore power connections (1 forward, 1 aft)

Исключения

При продаже яхты исключаются личные вещи владельца.

Отказ от ответственности

Компания предоставляет описание судна или яхты добросовестно, но не может гарантировать точность этой информации, а также не ручается за техническое состояние. Покупатель должен проинструктировать своих агентов или оценщиков исследовать представленную информацию более подробно, по собственному желанию. Продажа судна или яхты, изменение цены или снятие с продажи будет происходить без предварительного уведомления.

ФОТОГРАФИИ

Guest Stateroom Forward



Guest/Day Head



Helm to Starboard



Salon Aft



Galley Stove and Microwave - Steps to Forward Stateroom



Galley to Port



Salon to Starboard



Salon to Port with Deck Access



Electrical Panels



Master Stateroom Entrance



Master Queen Berth



Master Stateroom to Starboard



Master Ensuite Head to Port



Master Stateroom Shower to Starboard



Port Side Deck Forward



Bow with Varnished Rails



Ground Tackle



Starboard Side Deck Aft



Trunk Cabin Forward



Flybridge with Sunbrella Bimini and Helm Covers



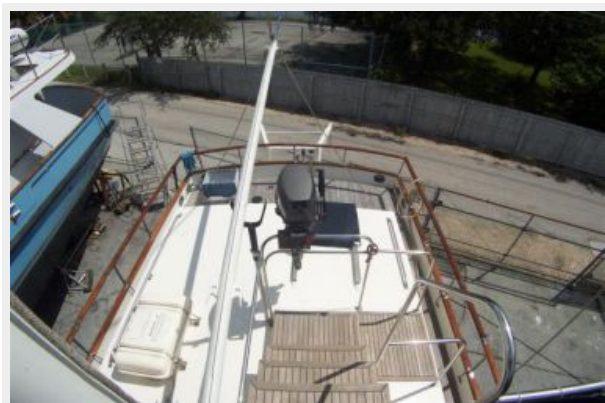
Flybridge Helm



Flybridge Aft Deck



Trunk Cabin from Flybridge



10' Zodiac RIB



Port View



Bow View



Running Gear with Fresh Paint



Undercover Storage



КОНТАКТЫ

Андрей Шестаков (Andrey Shestakov) – ведущий яхтенный брокер отдела продаж яхт и судов компании Shestakov Yacht Sales Inc. Официальный представитель Shestakov Yacht Sales Inc. для русскоговорящих клиентов в центральном офисе компании в Майами/Форт Лодердейл/Флорида/США.

Контактная информация

Email: andrey@shestakovyachtsales.com

Web: shestakovyachtsales.com

Телефоны

Краснодарский край: **+7(918)465-66-44**

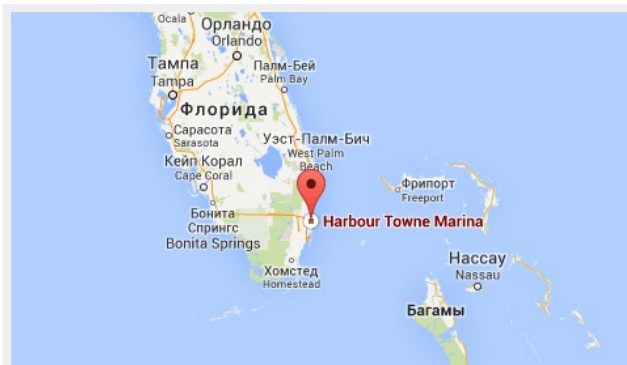
США, Майами, Флорида: **+1(954)274-4435**

Время работы

Понедельник – Суббота: **9:00 - 21:00**
EDT

Воскресенье: **Закрето**

Адрес



Harbour Towne Marina, 850 NE 3rd St,
STE 213, Dania, FL 33004